

# 68

**U.S. PUBLIC LAND CORNER  
MAINTENANCE**

**Corner ID : S¼ Sec.16, T17N-R4W  
21704160020**

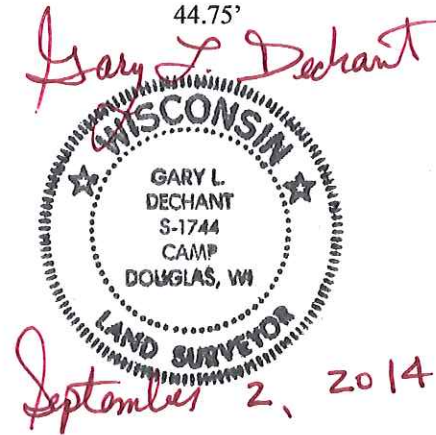
<u>DATE</u>	<u>CREW</u>	<u>MONUMENT TYPE</u> -----
September 2, 2014	Zachariah P.Dechant Gary L. Dechant	Found Harrison in centerline Hammer Road. Top broke off. down 6". 60' south of driveway Fire No. 16018 Hammer Rd.

References:

	<u>Bearing</u>	<u>Distance</u>
1) Existing 1" pinched iron pipe, down 2". Being the SW corner of Vol 8 CSM P 258	N40E	48.09'
2) Set ¾"x24" square iron bar, down 14" in field	S85E	35.00'
3) Set ¾"x24" square iron bar, down 14" in field	S40W	50.21'
4) Set ¾"x24" square iron bar, down 14" in field	N48W	44.75'

Reference markers 1 & 3 are on straight line with Harrison.

**COORDINATES:**



I, Harley A. Sime, do hereby certify that on the 27th day of October 1975, I found (evidence) (~~no-evidence~~) of the S1/4 corner of Section 16, T17 N, R 4 W, Fourth Principal Meridian, and I re-established said corner according to the Wisconsin Statutes as shown and described hereon.

Dated this 12th day of Jan. 1976.

Harley A. Sime  
County Surveyor  
Title

History of original corner establishment:

A stone was set at this corner in 1895 by Henry Schroeder.

**See Reverse Side For Maintenance**

Description of corner evidence found:

Found a 3/4" iron bar set by D. Marten. Removed the bar and dug for the stone but could not find it. Accepted Marten's bar as the corner and replaced it with a Harrison marker. This position fits well with the 1895 notes and the presently occupied lands of Sections 16 & 21, and also fits the old 3 rod right-of-way fences.

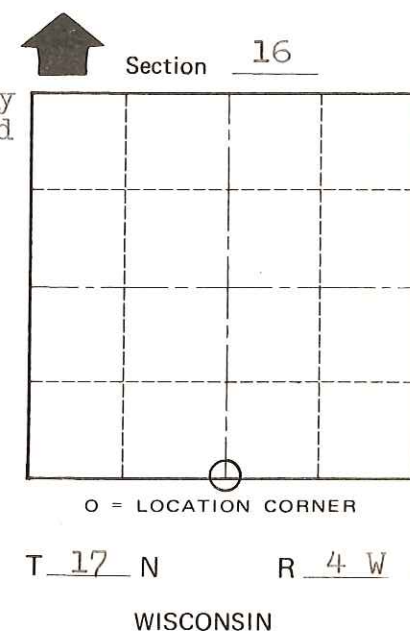
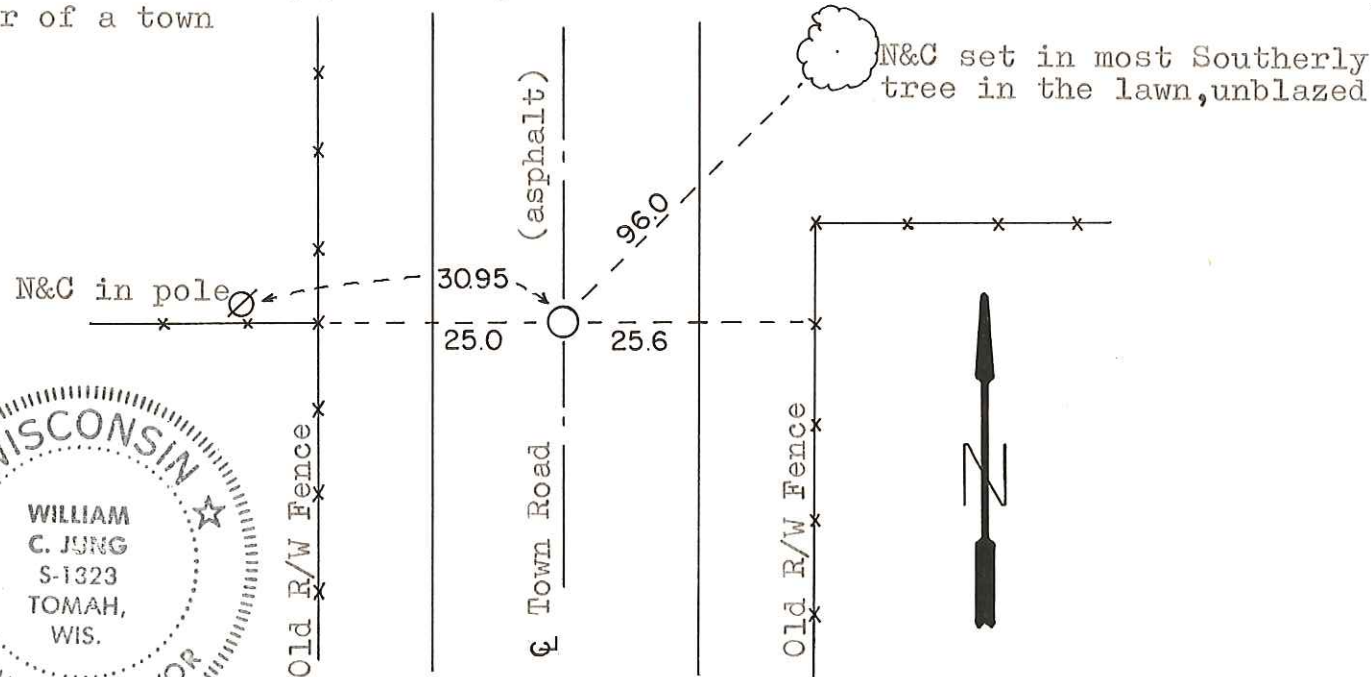
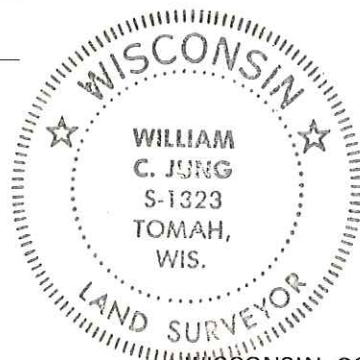
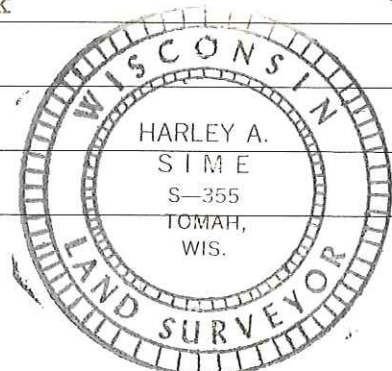
Note: See corner sheet #77C for further information.

Description of corner and witness monuments, references and accessories used to perpetuate the original or re-established location of this corner:

Set a Harrison marker in the center of a town road, down 2".

Witnesses to corner location:

W. Jung - Crew Chief W.C. Jung  
A. Lueck



SURVEY CONTROL ORDER

Horizontal	_____
Vertical	_____

WISCONSIN COORDINATE SYSTEM

Corner	East (X)	North (Y)	Elevation (Z)	Zone
Control Sta. Name				

City, Village or Town Sparta  
County of Monroe

COUNTY SURVEYOR FORM NO. 1