

58

**U.S. PUBLIC LAND CORNER
MAINTENANCE**

Corner ID : E1/4 Sec. 15 T17N-R4W

21704152000

| <u>DATE</u> | <u>CREW</u> | <u>MONUMENT TYPE -----</u> |
|----------------|--|---|
| August 5, 2016 | Zachariah P.Dechant Gary L. Dechant | Existing Cast Iron County Monument intact at Harbor Ave/ Montgomery St intersection. Down 2" 7' west of manhole |

References:

| | <u>Bearing</u> | <u>Distance</u> |
|---|----------------|-----------------|
| 1) Set 3/4"x24" round iron bar, down 8" on line with west side field entrance | N36E | 60.08' |
| 2) Set 3/4"x24 round iron bar, flush, east side flower garden 5' east & 2' south of power pole | S32E | 33.50' |
| 3)Existing 2" iron pipe | South | 33.00" |
| 4) Set 3/4"x24" round iron bar east side of three arborvitae | S8W | 39.03' |
| 5) Detected Meyer's iron bar. Did not dig as in perfected lawn! 25' north and 11' west of NE corner of house | S40W | (84.88') |
| 6) Existing 3/4" round iron bar, down 8", 5' north of fire hydrant | N50W | 37.01' (37.05') |
| 7) Set 3/4"x24" round iron bar, down 8" in field | N32W | 67.78' |

Harrison and reference markers 2 and 7 set on straight line.



I, Bryan H. Meyer, do hereby certify that on the 6th day of August 19 86, I found (evidence) ~~no evidence~~ of the East 1/4 corner of Section 15, T 17 N, R 4 W Fourth Principal Meridian, and I re-established said corner according to the Wisconsin Statutes as shown and described hereon.

Dated this 26th day of Dec. 19 86.

Bryan H. Meyer
Deputy County Surveyor
Title

History of corner establishment since Original Government Survey

E. A. Rice (Deputy County Surveyor) was here in 1857. E. Neuman was here in 1885. Webster Kenyon was here in May and November of 1892. During the 1950s, 60s and 70s many surveys were done by several surveyors. In July of 1975, H. A. Sime replaced an iron pipe with a Harrison marker.

Description of corner evidence found:

In 1985 James Richgruber (City Engineer) contacted the County Surveyors Office and informed us the city was going to be doing street improvements on West Montgomery. I got additional ties and removed the Harrison. After completion of the street improvements the corner was reset at its prior location.



COUNTY SURVEYOR FORM NO. 1

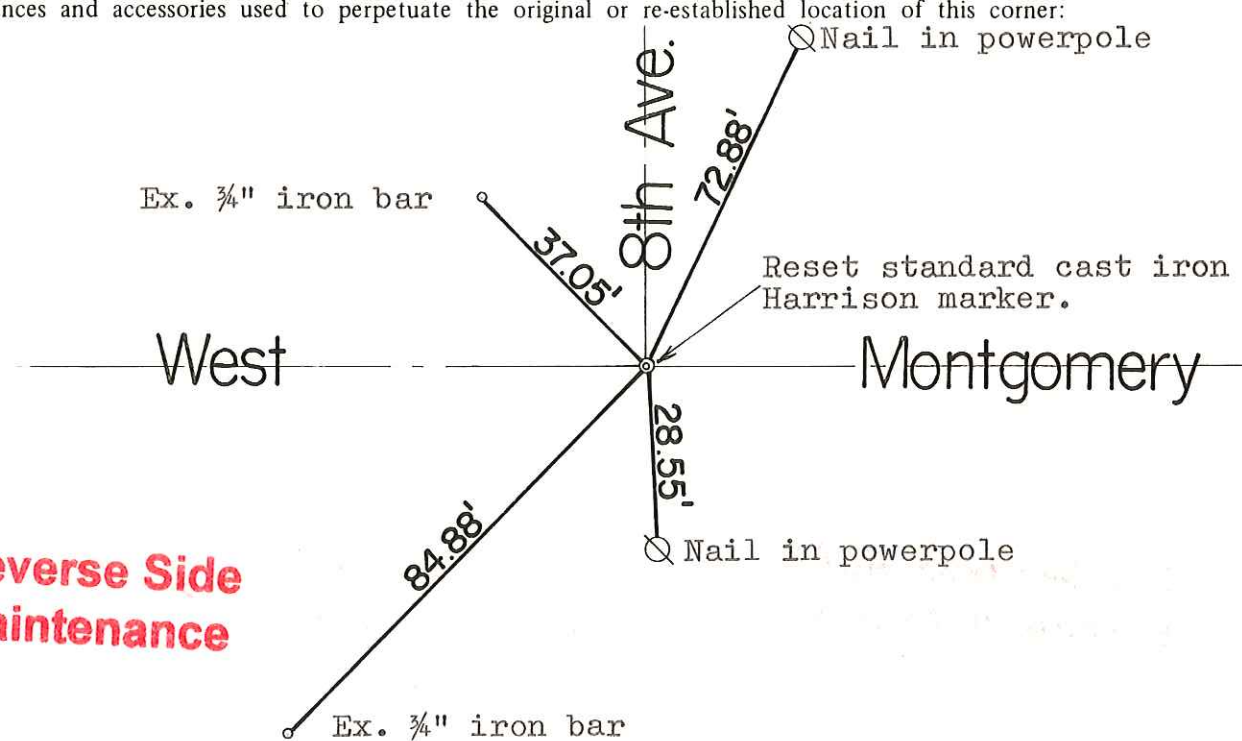
Description of corner and witness monuments, references and accessories used to perpetuate the original or re-established location of this corner:

Crew: Wilhite, Tralmer
Date: August 6, 1986

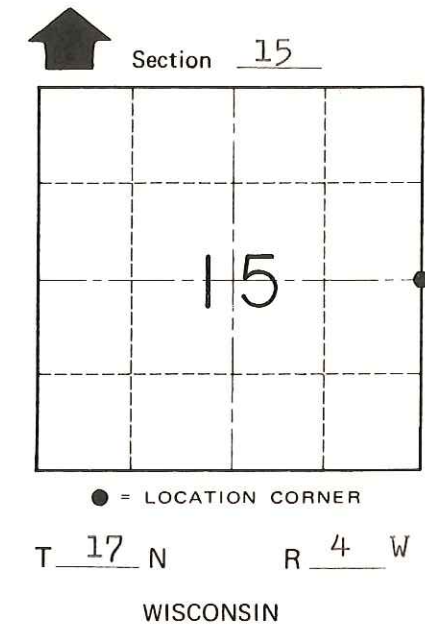
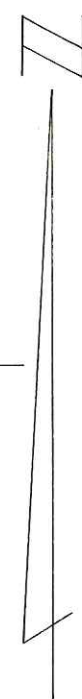
Witnesses to corner location:

Dallas Wilhite

Joel Tralmer



See Reverse Side For Maintenance



SURVEY CONTROL ORDER

| | |
|------------|-------|
| Horizontal | _____ |
| Vertical | _____ |

WISCONSIN COORDINATE SYSTEM

| Corner | East (X) | North (Y) | Elevation (Z) | Zone |
|-------------------|----------|-----------|---------------|------|
| Control Sta. Name | | | | |

~~City, Village or~~ Town Of Sparta
County of Monroe

CERTIFICATE

CERTIFIED LAND CORNER

No. 58

Page 1

I, Harley A. Sime, do hereby certify that on the 11 day of July 1975, I found (evidence) (~~no evidence~~) of the E 1/4 corner of Section 15, T. 17 N, R. 4W, Fourth Principal Meridian, and I re-established said corner according to the Wisconsin Statutes as shown and described hereon.

Dated this 19 day of Jan 1976.

[Signature]
County Surveyor
Title

History of original corner establishment:

See Reverse Side For Maintenance

Description of corner evidence found:

Found an iron pipe that had been used in previous surveys. Removed the pipe and replaced it with a Harrison marker.



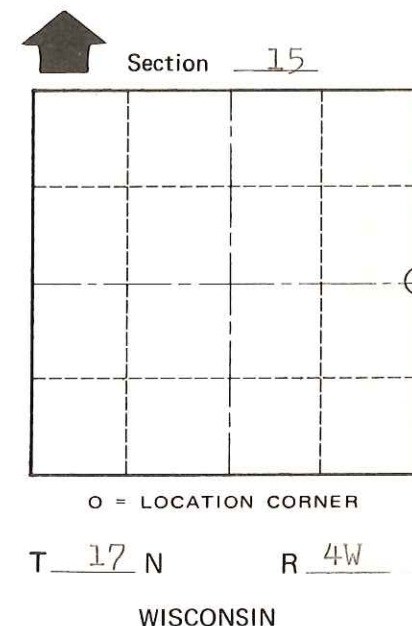
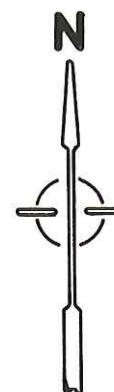
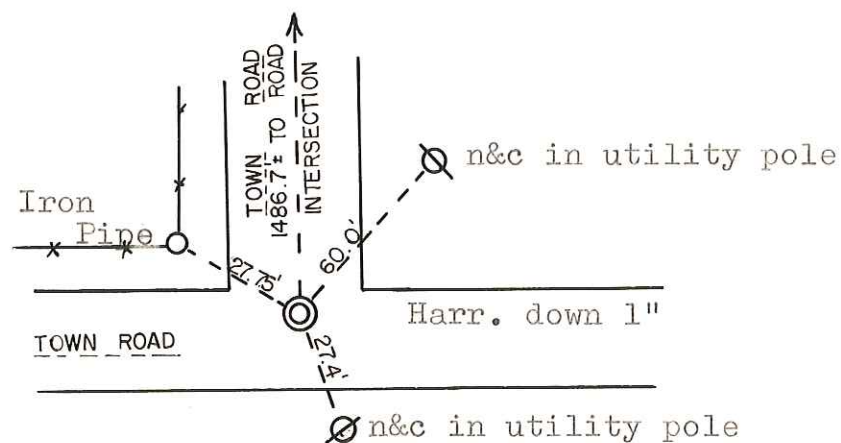
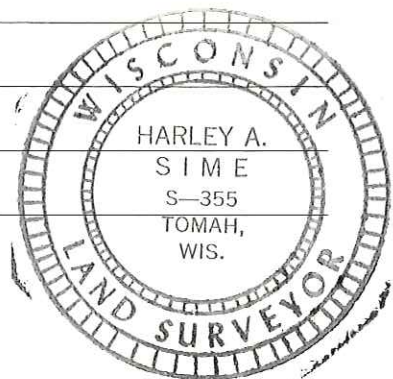
COUNTY SURVEYOR FORM NO. 1

Description of corner and witness monuments, references and accessories used to perpetuate the original or re-established location of this corner:

Set a Harrison in the road, down 1".

Witnesses to corner location:

W.C. Jung - Crew Chief [Signature]
G. Dechant



SURVEY CONTROL ORDER

| | |
|------------|-------|
| Horizontal | _____ |
| Vertical | _____ |

WISCONSIN COORDINATE SYSTEM

| Corner | East (X) | North (Y) | Elevation (Z) | Zone |
|-------------------|----------|-----------|---------------|------|
| Control Sta. Name | | | | |

City, Village or Town Sparta

County of Monroe