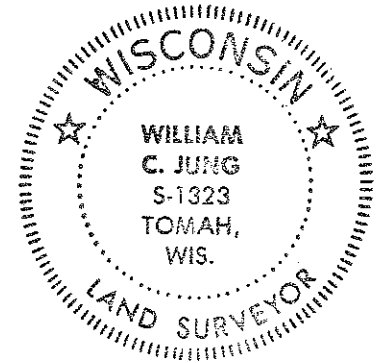


CERTIFICATE

CERTIFIED LAND CORNER

No. 66

**21704150020**



I, Harley A. Sime, do hereby certify that on the 16 day of January 19 76, I found ~~(evidence)~~ (no evidence) of the S 1/4 corner of Section 15, T 17 N, R 4W, Fourth Principal Meridian, and I re-established said corner according to the Wisconsin Statutes as shown and described hereon.

History of original corner establishment:

Description of corner evidence found:

Dated this 19 day of Jan 19 76.

Set the corner proportionately between the section corners.

Harley A. Sime  
County Surveyor  
Title

COUNTY SURVEYOR FORM NO. 1

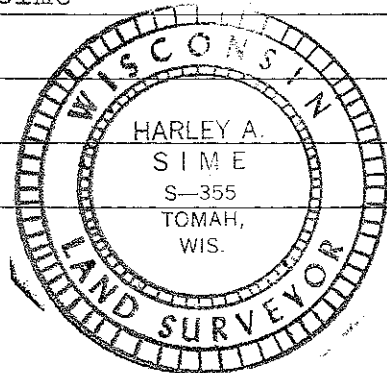
Description of corner and witness monuments, references and accessories used to perpetuate the original or re-established location of this corner:

Set a Harrison, up 3".

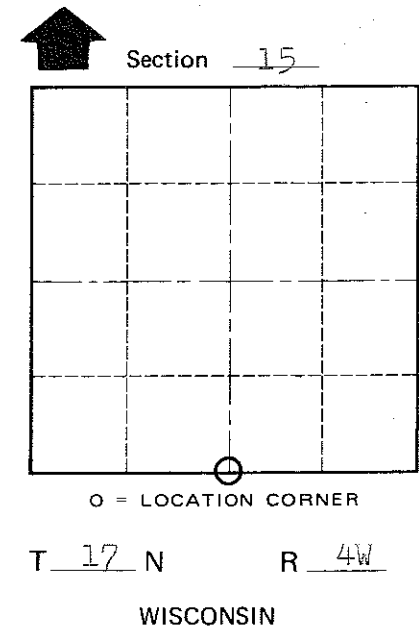
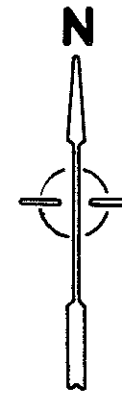
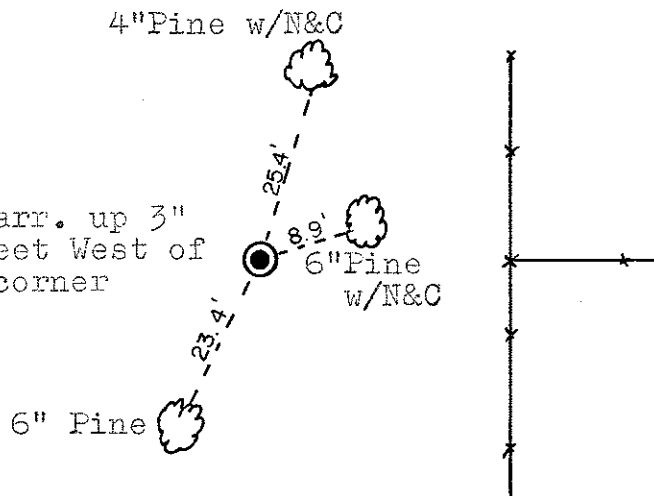
All trees were blazed.

Witnesses to corner location:

W.C. Jung - Crew Chief *W.C. Jung*  
G. Sime



Set Harr. up 3"  
12.5 feet West of  
fence corner



SURVEY CONTROL ORDER

Horizontal	_____
Vertical	_____

WISCONSIN COORDINATE SYSTEM

Corner	East (X)	North (Y)	Elevation (Z)	Zone
Control Sta. Name				

City, Village or Town Sparta

County of Monroe