

# 65

**U.S. PUBLIC LAND CORNER  
MAINTENANCE**

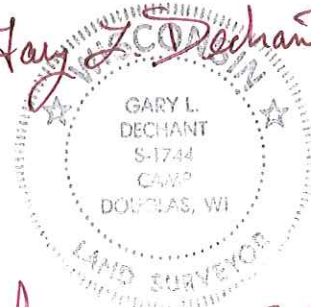
**Corner ID : SE Sec. 15, T17N-R4W**

**21704150000**

<u>DATE</u>	<u>CREW</u>	<u>MONUMENT TYPE</u> -----
December 1, 2017	Zachariah P. Dechant Gary L. Dechant	Existing Harrison intact, down 4". 12' NW of roadway into cemetery and private drive to south along curve. On line with fence to the south.

References:

	<u>Bearing</u>	<u>Distance</u>
1) Set 1"x24" iron pipe at SE corner of "Strait" cemetery monument	NE	53.98'
2) Set 3/4"x24" round iron bar, north side of "Grace R. Peters" cemetery monument Sept. 29, 1905-Sept. 15, 1906	SE	52.84'
3) Set 1"x24" iron pipe at SE corner "Hutson" family cemetery monument	SW	83.62'
4) Set 3/4"x24" round iron bar, SE corner of "Strait" cemetery monument	NW	56.80'

*Gary L. Dechant*  
  
*January 5, 2018*

CERTIFICATE

I, Harley A. Sime, do hereby certify that on the 18 day of July 1975, I found (evidence) (~~no evidence~~) of the S.E. corner of Section 15, T17 N, R 4W, Fourth Principal Meridian, and I re-established said corner according to the Wisconsin Statutes as shown and described hereon.

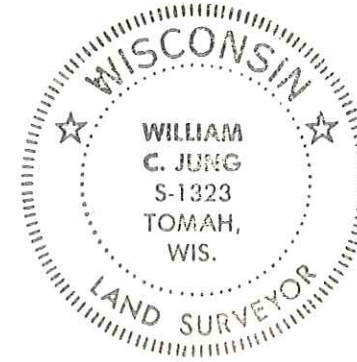
Dated this 19 day of Jan. 1976.  
Harley A. Sime  
County Surveyor  
Title

CERTIFIED LAND CORNER

History of original corner establishment:

Description of corner evidence found:

Found a well point with a brick on top at the corner. This point had been used in previous surveys. Removed the well point and replaced it with a Harrison marker.



No. 65

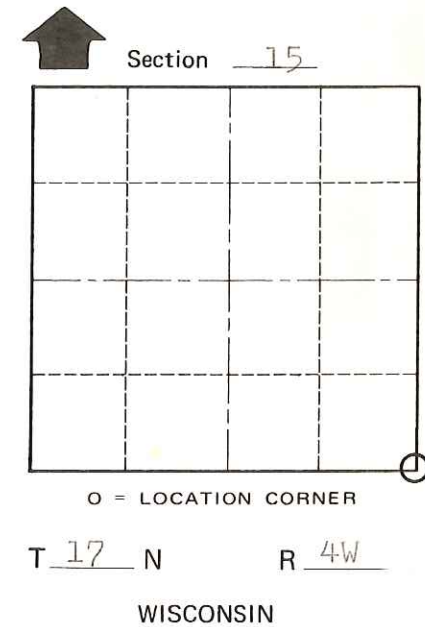
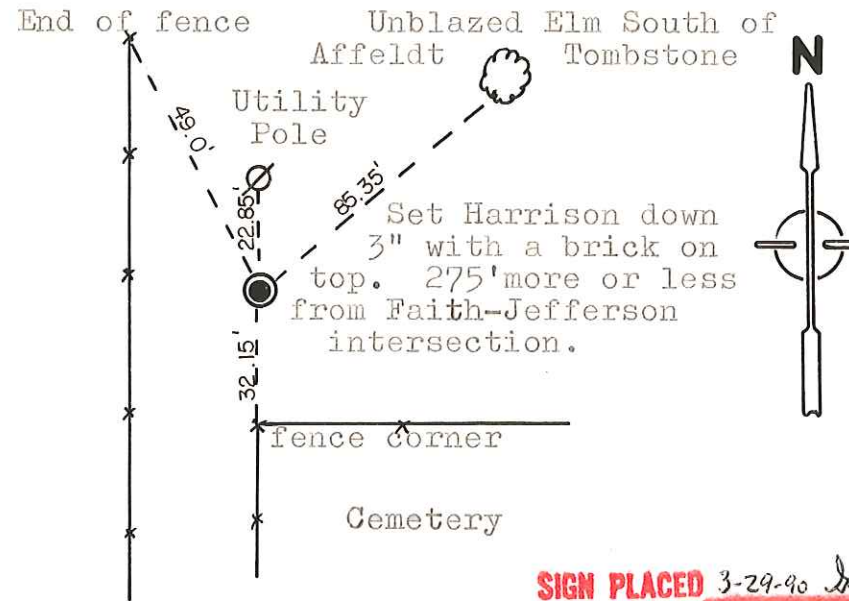
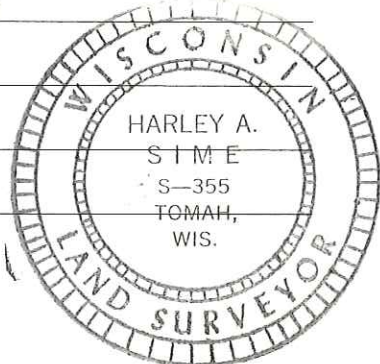
**See Reverse Side For Maintenance**

Description of corner and witness monuments, references and accessories used to perpetuate the original or re-established location of this corner:

Set a Harrison with a brick on top.

Witnesses to corner location:

W.C. Jung - Crew Chief W.C. Jung  
G. Dechant  
A. Lueck



**SIGN PLACED** 3-29-90 J. Sime

SURVEY CONTROL ORDER

Horizontal \_\_\_\_\_  
Vertical \_\_\_\_\_

WISCONSIN COORDINATE SYSTEM

Corner	East (X)	North (Y)	Elevation (Z)	Zone
Control Sta. Name				

City, Village or Town Sparta

County of Monroe

COUNTY SURVEYOR FORM NO. 1