

CERTIFICATE

I, \_\_\_\_\_ certify that on the \_\_\_\_\_ of \_\_\_\_\_ (evidence) (no evidence) of \_\_\_\_\_ corner of \_\_\_\_\_ Fourth Principal established said corner according to Statutes as shown and described. Dated this \_\_\_\_\_ day of \_\_\_\_\_

Title \_\_\_\_\_

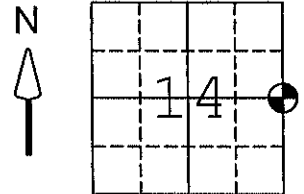
Description of corner and witness to corner location:

Witnesses to corner location:

SURVEY CONTROL ORD	
Horizontal	_____
Vertical	_____
Corner	_____
Control Sta. Name	_____

# MONROE COUNTY

## RECORD OF U.S. PUBLIC LAND SURVEY CORNER

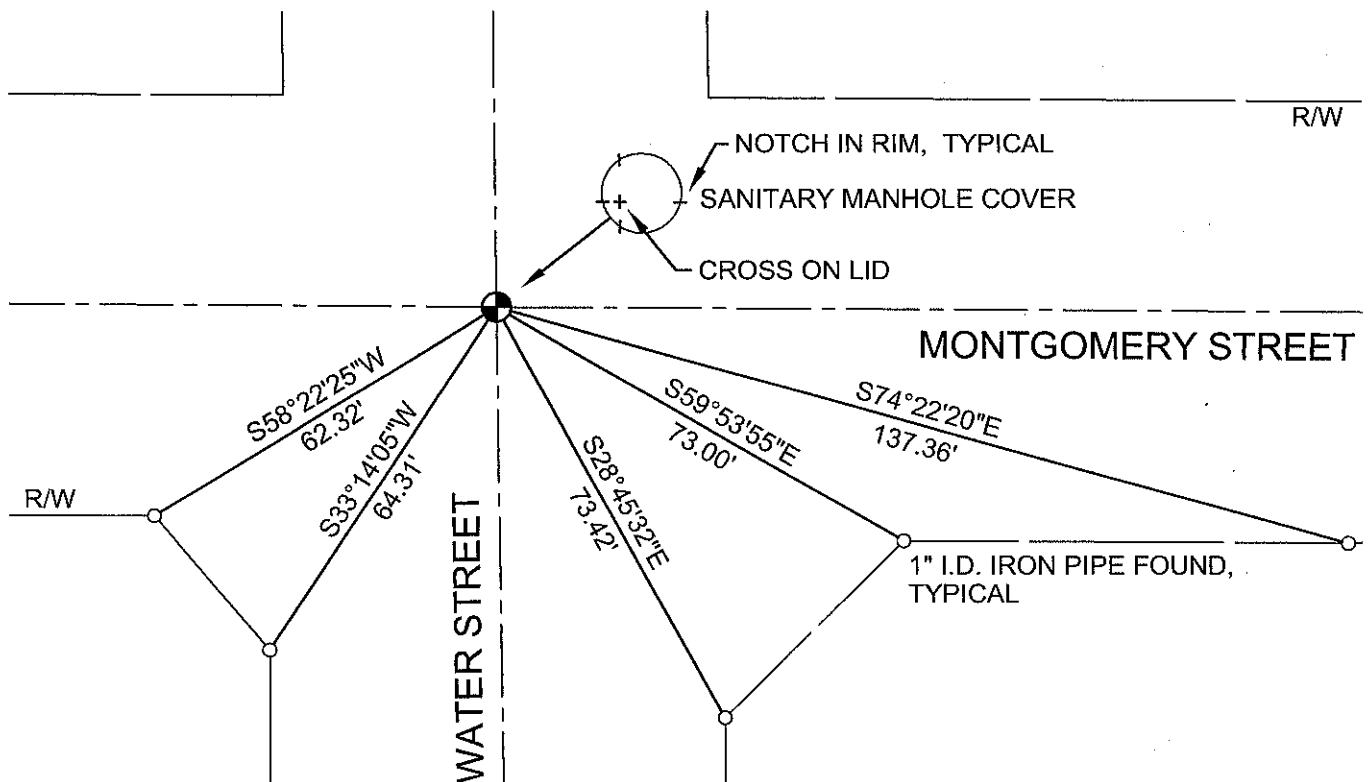


COUNTY COORDINATES (WCCS)  
 NORTH 381735.86  
 EAST 626432.32  
 THETA ANGLE \_\_\_\_\_

SECTION 14  
 CITY OF SPARTA  
 T 17 N - R 4 W  
EAST QUARTER CORNER

SET CHISELED NOTCHES ON MANHOLE RIM

### LOCATION & TIE SKETCH



### BASIS FOR MONUMENT LOCATION GIVE HISTORY & TYPE OF MONUMENT FOUND

IN MAY 1996 I FOUND, VERIFIED AND ACCEPTED A CROSS ON MANHOLE LID PER A TIE SHEET BY GARY L. DECHANT DATED 9/18/1987. SUBSEQUENT HIGHWAY CONSTRUCTION BY OTHERS DESTROYED THE MONUMENT AND ALL ACCESSORY TIES. DURING MY 1996 AND LATER SURVEYS I HAD ALSO MEASURED TO VARIOUS LOT CORNERS WITHIN A 400-FOOT RADIUS OF THIS LOCATION. IN MAY 2004 I RECOVERED THE PREVIOUS LOT CORNERS, THEN COMPUTED THE LOCATION OF THE ORIGINAL MONUMENT RELATIVE TO THESE UNDISTURBED POINTS. ON APRIL 8, 2005 I RESET A CHISELED CROSS ON A NEW MANHOLE LID USING MY COMPUTED LOCATION TO PERPETUATE DECHANT'S 1987 CORNER. I ALSO SET FOUR NOTCHES ON THE MANHOLE RIM WHICH INTERSECT TO THE CROSS. THIS CORNER FALLS ON A SANITARY MANHOLE COVER IN THE CENTER OF THE INTERSECTION OF WATER STREET AND MONTGOMERY STREET.

SEAL:



SIGNATURE \_\_\_\_\_  
 Registered Land Surveyor  
 R.L.S. No. S-1725  
 DATE: 4/08/2005

(Page 2) 59

I, Gary L. Dechant, do hereby certify that on the 8th day of September 19 87, I found ~~(XXXXXX)~~ (no evidence) of the E<sup>1</sup>/<sub>4</sub> corner of Section 14, T 17 N, R 4 W Fourth Principal Meridian, and I re-established said corner according to the Wisconsin Statutes as shown and described hereon.

Dated this 18th day of Sept. 19 87.

Gary L. Dechant

Registered Land Surveyor, S-1744  
Title

History of corner establishment since Original Government Survey

No known recorded history since the original government survey.

Description of corner evidence found:

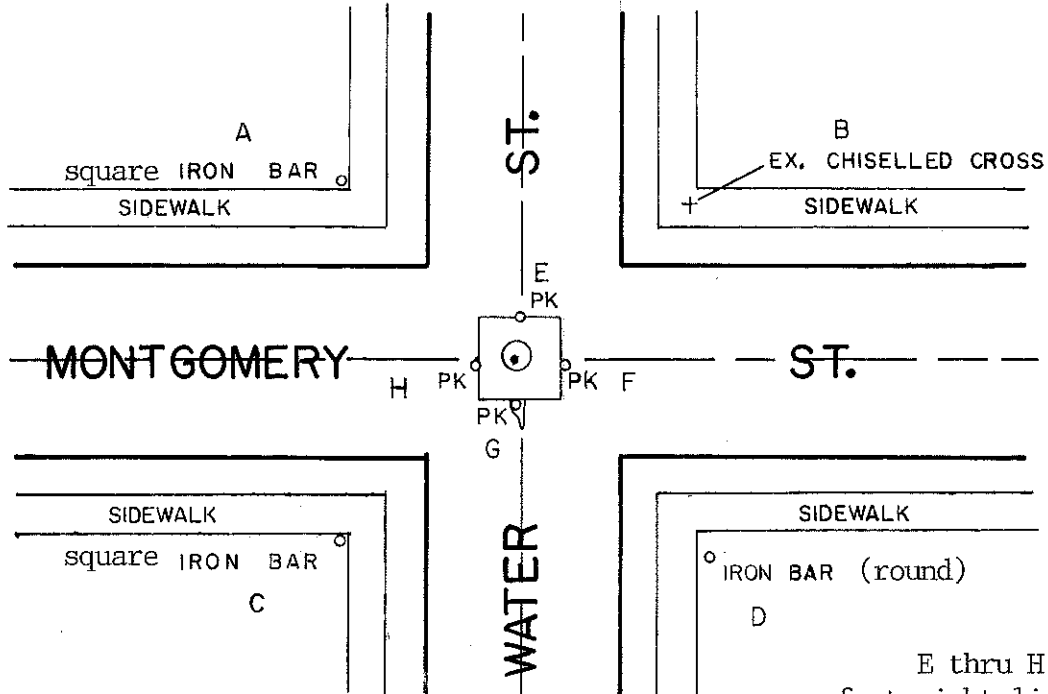
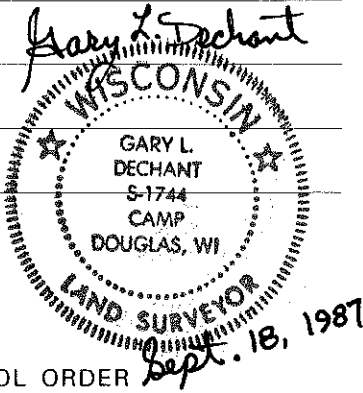
Corner re-established on straight line between NE corner of Section 14 (Ex. Harrison) and the NE corner of the SE<sup>1</sup>/<sub>4</sub>-NE<sup>1</sup>/<sub>4</sub> (Ex. 1 1/2" round iron bar) and at a doubled distance. This is also a computed location by Feddersen Engineering and surveying in an earlier survey. Falls on SW corner of manhole at intersection of Water and Montgomery Streets. Fits all four block corners at this street intersection extremely well. All block corners are existing monuments.

Description of corner and witness monuments, references and accessories used to perpetuate the original or re-established location of this corner:

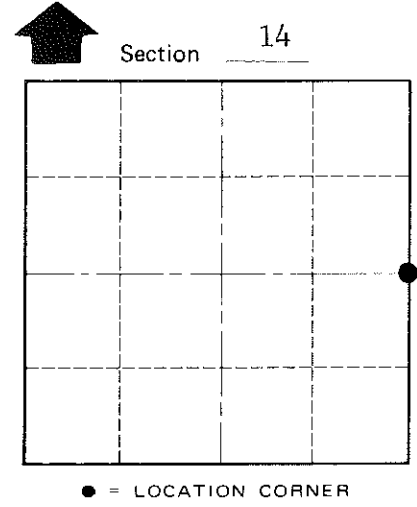
Witnesses to corner location:

David E. Madison

Gary L. Dechant



- A-B = 66.00
- B-D = 66.00
- C-D = 66.00
- A-C = 65.85
- A to corner = 46.53'
- B to corner = 46.65'
- C to corner = 46.61'
- D to corner = 46.72
- E to corner = 2.28'
- F to corner = 2.64'
- G to corner = 2.66'
- H to corner = 2.08'



T 17 N R 4 W  
WISCONSIN

E thru H are P.K. nails Corner falls at intersection of straight lines created between line E-G and line F-H.

COUNTY SURVEYOR FORM NO. 1

SURVEY CONTROL ORDER

Horizontal	_____
Vertical	_____

Corner	East (X)	North (Y)	Elevation (Z)	Zone
Control Sta. Name				

City, ~~XXXXXX~~ Town Sparta  
County of Monroe