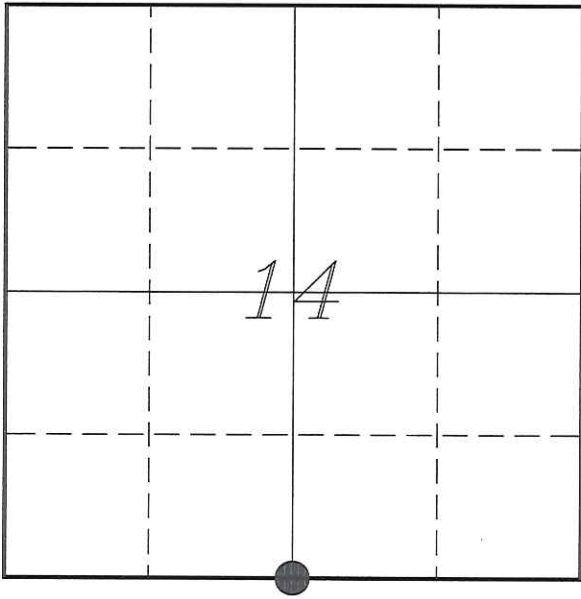


U. S. PUBLIC LAND SURVEY MONUMENT RECORD

SECTION 14, T17N, R4W, CITY OF SPARTA  
 MONROE COUNTY, WISCONSIN



LOCATION OF LANDMARK

MONROE COUNTY COORDINATE SYSTEM	
Northing	379130.778
Easting	623831.307
Datum	NAD 1983 (1991)
Elevation	
Datum	
TYPE OF LANDMARK:	
Set 2" Brass Disk	
BEARINGS ARE REFERENCED TO:	
Monroe County Coordinates	

Witnesses: Laurence E Johns III

Date: 14 September 2013

Describe any record evidence, monument evidence, testimonial evidence or any other material evidence you considered and whether the monument was found or restored through acceptance of an obliterated evidence location.

No bearing trees of record were located.

The plat of Academy Subdivision shows the West right-of-way line of Grace Street to be the '40' line. Grace Street has been monumented in several places through several surveys. The NW Corner of the SE1/4 of the SW1/4 was monumented and identified as the '40' corner on CSM, Vol 10, Pg 65, and CSM, Vol 9, Pg 212.

The intersection of the Northerly right-of-way of Jefferson Avenue and the Westerly right-of-way of Grace Street was monumented as well.

I accepted the monumented Westerly right-of-way line of Grace Street as the '40' Line and extended that line to the straight line between the SW & SE Corners of Section 14. When doubling the distance between this location and the SW Corner, it comes to the center of Black River Street.

Though the straight line between the SW & SE Corners does not follow the centerline of Jefferson Avenue as currently monumented, the extension of the centerline to the East would be just 0.75 feet North of this location and extended West would be 11 feet South of the SW Corner. I did not feel the centerline of Jefferson Avenue to accurately represent the South line of Section 14.

I accepted the location of the straight line between the SW & SE Corners and twice the distance from Grace Street as the best available evidence of the original government corner. I set a 2" Brass Disk at this location due to its location in the concrete of Black River Street.

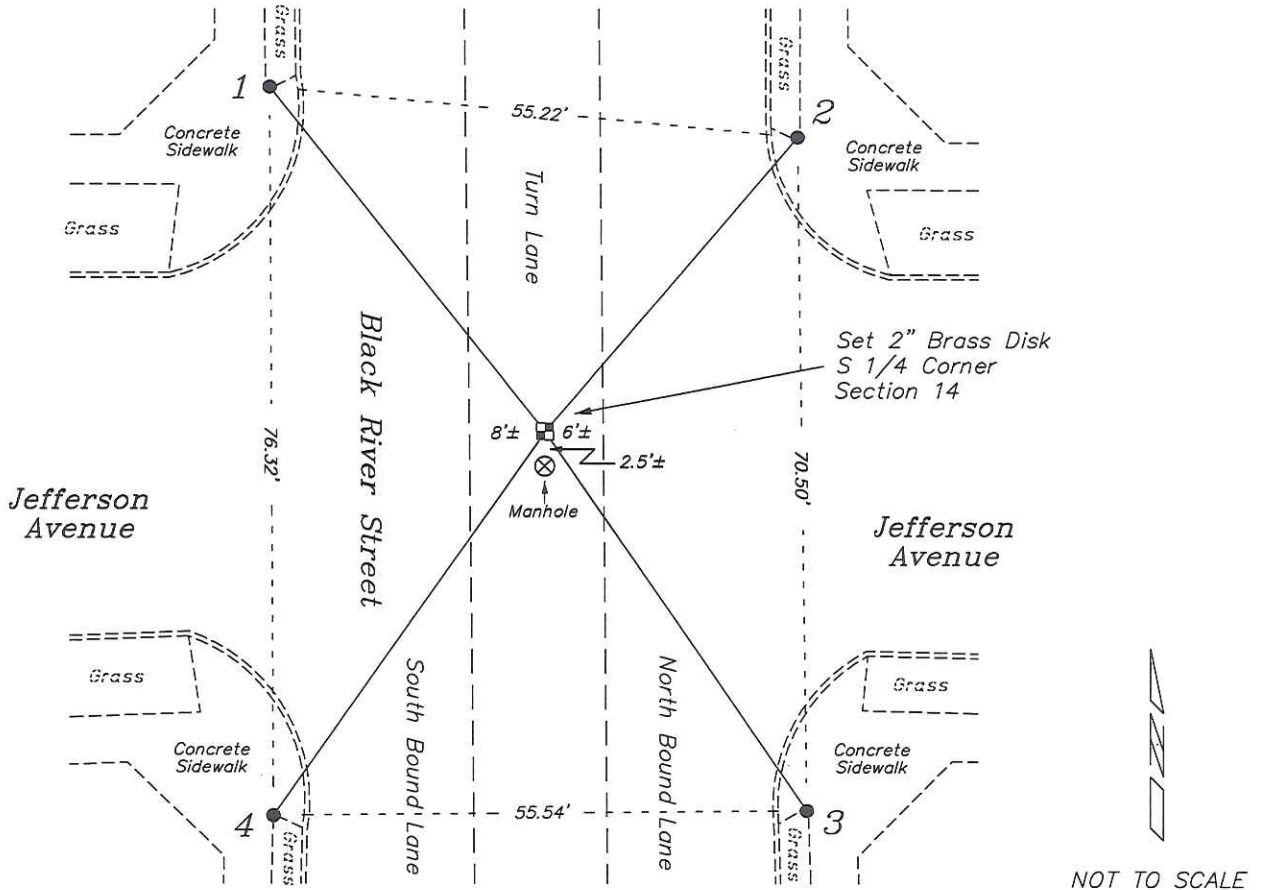
Describe or show any material discrepancy between the location of the restored corner and that of the corner previously restored or re-established.

John Dunn established this corner in December 1846.

The plat of Academy Subdivision shows that the South line to be the Section line. No monument was shown for this corner.

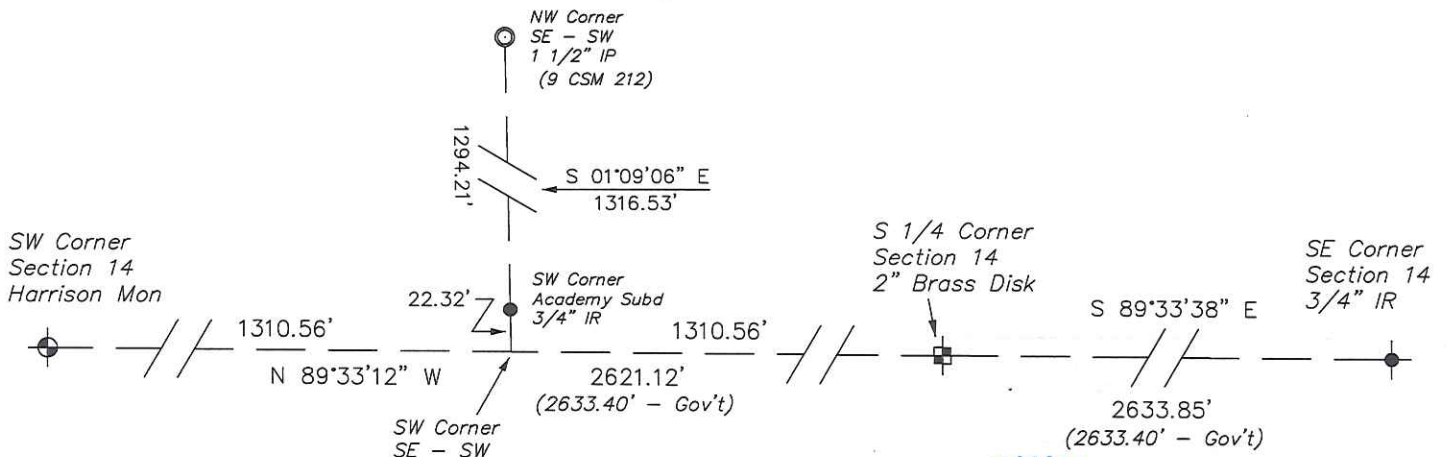
## RECORD OF DURABLE WITNESS MONUMENTS

NO	DESCRIPTION	BEARING	DISTANCE
1	Set 3/4" x 18" Iron Rod In Grass at Edge of Concrete	N 38°31'26" W	46.09'
2	Set 3/4" x 18" Iron Rod In Grass at Edge of Concrete	N 40°28'58" E	40.44'
3	Set 3/4" x 18" Iron Rod In Grass at Edge of Concrete	S 34°30'06" E	48.21'
4	Set 3/4" x 18" Iron Rod In Grass at Edge of Concrete	S 35°02'48" W	49.17'



## PLAN VIEW DRAWING OF REFERENCE TIES

Map Showing Distance And Direction To Other Public Land Survey Corners Used For Re-Establishing The Corner



I, Laurence E Johns III RLS 2804, Registered Land Surveyor, hereby certify that the corner location shown on this record was determined by me or under my direction and control, and that this U.S. Public Land Survey Monument Record is correct and complete to the best of my knowledge and belief.

*Laurence E Johns III*  
 Laurence E Johns III RLS 2804  
 Eagle Ridge Surveying, LLC  
 PO Box 213  
 Wilton, Wisconsin  
 14 September 2013

