

62

**U.S. PUBLIC LAND CORNER
MAINTENANCE**

Corner ID : S1/4 Sec.13, T17N-R4W
21704130020

<u>DATE</u>	<u>CREW</u>	<u>MONUMENT TYPE</u>
September 3, 2015	Zachariah P. Dechant Gary L. Dechant	Existing 1/4" round iron bar as WITNESS CORNER , now only 7' north of water's edge. 90' SW of SW corner VFW bldg. Actual corner falls 160' south in Perch Lake.

References: FOR **WITNESS CORNER**

	<u>Bearing</u>	<u>Distance</u>
1) Set 3/4"x24" round iron bar, 3' west of VFW sign	N70E	65.67'
2) Set 3/4"x24" round iron bar, down 6", 3' south of sw corner of concrete pad for tanks	N85W	36.25'
3) Set 3/4"x24" round iron bar, down 6", north of tank pad & 3' west of concrete flag pad	N44W	65.17'
4) Set 3/4"x24" round iron bar, down, 6", south of tank pad and 3' west of flag pad	NW	17.13'



I, Garold A. Sime, do hereby certify that on the 3rd day of November 19 83, I found (evidence) ~~no evidence~~ of the South 1/4 corner of Section 13, T 17 N, R 4 W Fourth Principal Meridian, and I re-established said corner according to the Wisconsin Statutes as shown and described hereon.

Dated this 19th day of Jan. 19 84.

Garold A. Sime
Deputy County Surveyor
Title

History of corner establishment since Original Government Survey

Kenyon or H. Schroeder was here in October of 1883. Fred A. Holden was here in August of 1902 and again in June of 1910.

Description of corner evidence found:

Found Holden's angle iron witness corner as called for in his 1902 notes. Computed this corner to be 520.08 feet North of said angle iron. Set a 1 1/4"x30" round iron bar 160.0 feet North of the actual corner as a witness.

See Reverse Side For Maintenance

Description of corner and witness monuments, references and accessories used to perpetuate the original or re-established location of this corner:

Witnesses to corner location:

Garold A. Sime

Dennis Perrigo



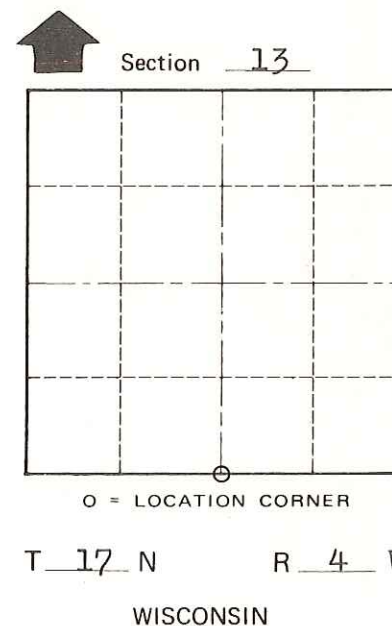
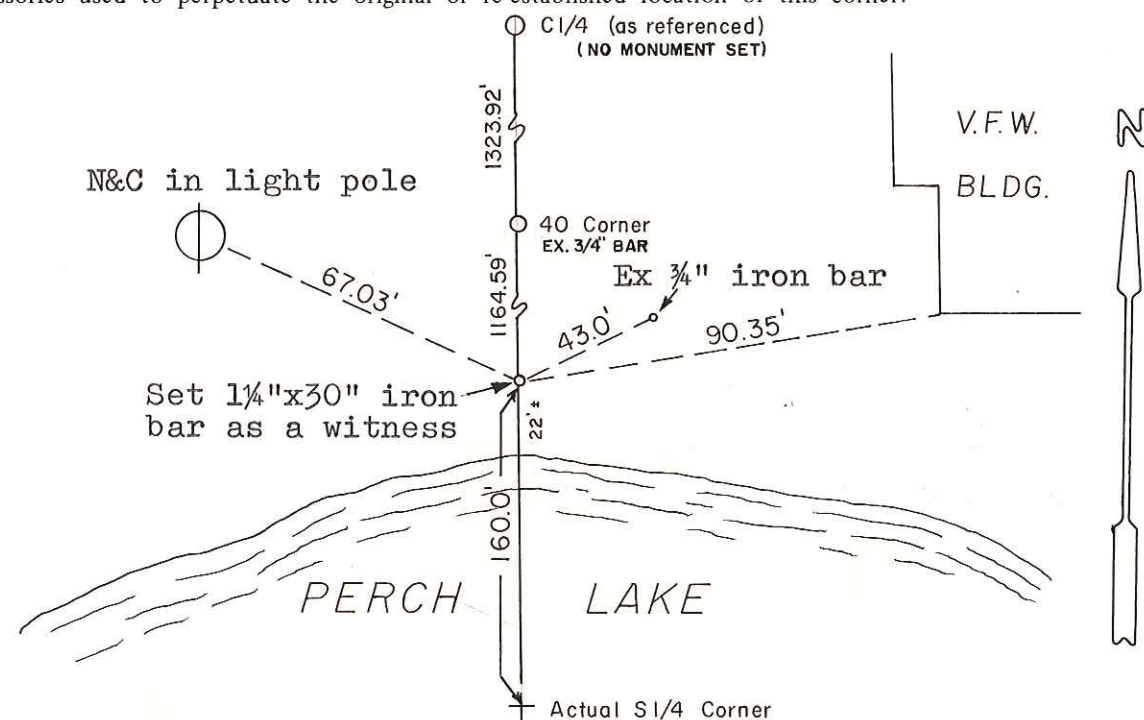
**Approved: HARLEY A. SIME
MONROE CO. SURVEYOR**

SURVEY CONTROL ORDER

Horizontal	_____
Vertical	_____

WISCONSIN COORDINATE SYSTEM

Corner	East (X)	North (Y)	Elevation (Z)	Zone
Control Sta. Name				



City, ~~Village or Town~~ of Sparta
County of Monroe

COUNTY SURVEYOR FORM NO. 1