

CERTIFICATE

CERTIFIED LAND CORNER

No. 61

21704130000

I, Harley A. Sime, do hereby certify that on the 1 day of July 1976, I found (evidence) (~~no evidence~~) of the NE corner of Sec, 24, T 17 N, R 4 W, Fourth Principal Meridian, and I re-established said corner according to the Wisconsin Statutes as shown and described hereon.

Dated this 13 day of July 19 76.

Harley A. Sime
 COUNTY SURVEYOR
 Title

History of original corner establishment:

Fred Holden set a iron stake at this corner in August, 1902.

Description of corner evidence found:

Found 15/8"x41" well point used in previous surveys; probably the "iron stake" set by Fred Holden. Replaced the well point with a Harrison monument.

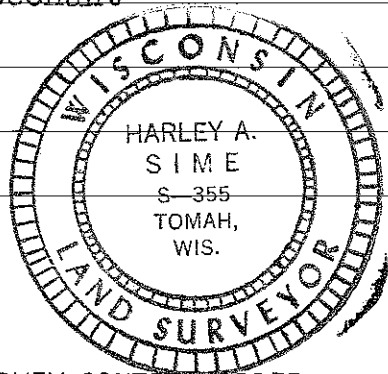
COUNTY SURVEYOR FORM NO. 1

Description of corner and witness monuments, references and accessories used to perpetuate the original or re-established location of this corner:

Witnesses to corner location:

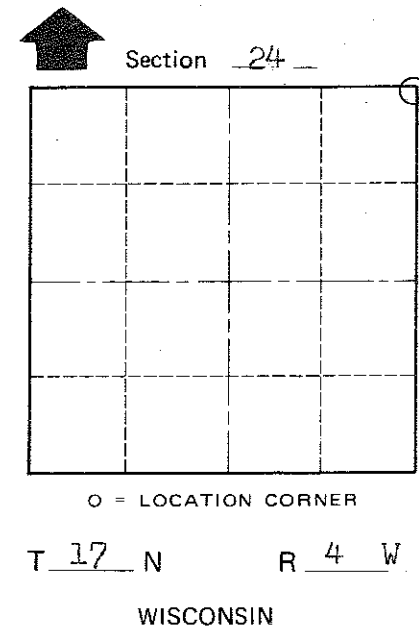
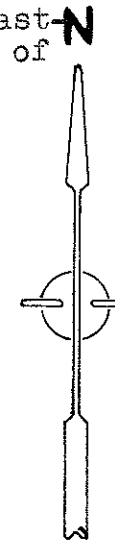
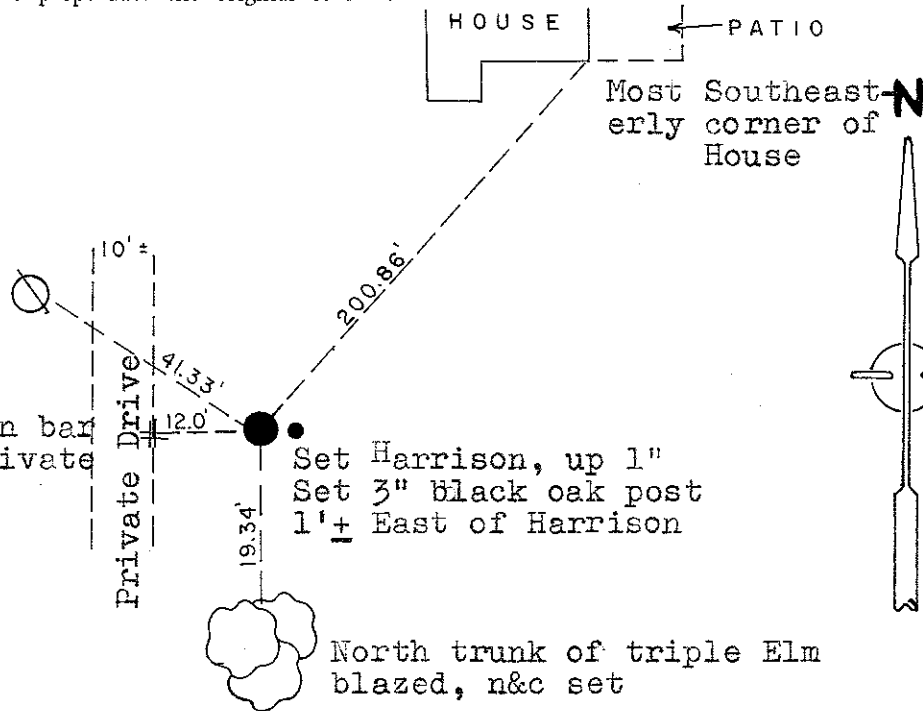
D.J. Malliet, Crew chief, R.L.S.

G. Dechant



Power pole, n&c set in hack mark on pole

Existing 3/4" iron bar East edge of private dirt road



SURVEY CONTROL ORDER

Horizontal	_____
Vertical	_____

WISCONSIN COORDINATE SYSTEM

Corner	East (X)	North (Y)	Elevation (Z)	Zone
Control Sta. Name				

City, Village or Town of Sparta

County of Monroe