

# 40

**U.S. PUBLIC LAND CORNER  
MAINTENANCE**

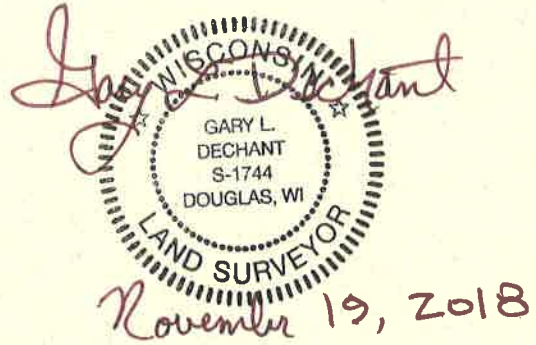
**Corner ID : E1/4 Sec. 12, T17N-R4W  
21704122000**

<u>DATE</u>	<u>CREW</u>	<u>MONUMENT TYPE</u>
November 19, 2018	Zachariah P. Dechant Gary L. Dechant	Found Harrison intact, down 3", in center of General Ave. 75' west of steel culvert. 4' east of new fence south of road

References:

	<u>Bearing</u>	<u>Distance</u>
1) Set 3/4"x 24" round iron bar, down 10" in field	N30E	46.53'
2) Set 3/4"x 24" round iron bar, down 10" in pasture	S28E	45.17'
3) Set 3/4"x 24" round iron bar, down 10" in pasture	S30W	50.78'
4) Set 3/4"x 24" round iron bar, down 10" in field	N28W	51.04'

Harrison and reference markers set on straight lines.



I, Harley A. Sime, do hereby certify that on the 9 day of April 1975, I found (evidence) ~~(no evidence)~~ of the E 1/4 corner of Section 12, T 17 N, R 4W, Fourth Principal Meridian, and I re-established said corner according to the Wisconsin Statutes as shown and described hereon.

Dated this 15 day of Jan. 1976.

Harley A. Sime  
County Surveyor  
Title

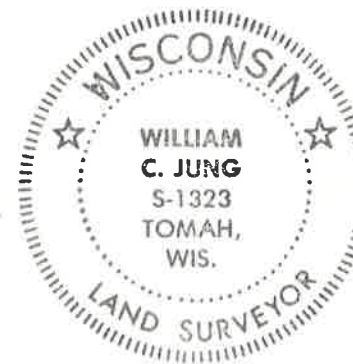
History of original corner establishment:

Description of corner evidence found:

Found an iron pipe in the center of the road that had been used in previous surveys. Removed the pipe and replaced it with a Harrison marker.

Note: This corner may have been disturbed in the summer of 1975 when the road was rebuilt and resurfaced.

See Reverse Side For Maintenance

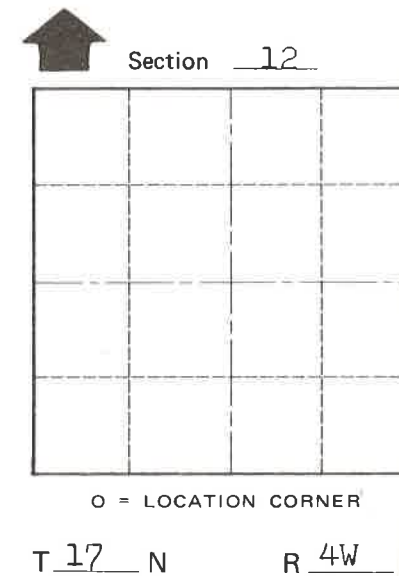
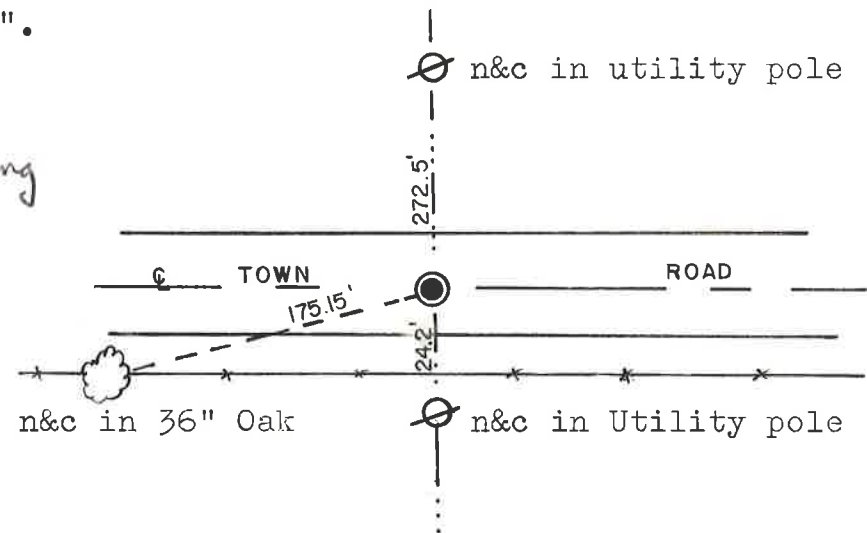
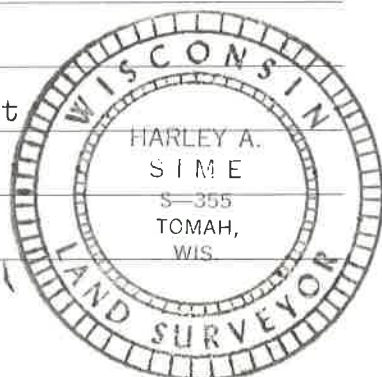


Description of corner and witness monuments, references and accessories used to perpetuate the original or re-established location of this corner:

Set a Harrison in the road, down 1".

Witnesses to corner location:

W.C. Jung - Crew Chief W.C. Jung  
G. Sime  
D. Malliet



COUNTY SURVEYOR FORM NO. 1

**IMPORTANT!** - Found the original Harrison damaged and broken from road construction. Set a new Harrison on top of the old one. The new marker is marked "Section Corner", not "Quarter Corner". The incorrectly marked corner was left in due to the difficulty of the excavation. One has merely to remember that this corner is a 1/4 corner.

WISCONSIN COORDINATE SYSTEM

SURVEY CONTROL ORDER

Horizontal \_\_\_\_\_  
Vertical \_\_\_\_\_

Corner	East (X)	North (Y)	Elevation (Z)	Zone
Control Sta. Name				

June 28, 1976 W.C. Jung W.C. Jung  
City, Village or Town Sparta R.L.S. 1323  
County of Monroe