

# 42

# U.S. PUBLIC LAND CORNER MAINTENANCE

Corner ID : S1/4 Sec. 12, T17N-R4W  
21704120020

DATE	CREW	MONUMENT TYPE -----
November 19, 2018	Zachariah P. Dechant Gary L. Dechant	Found Harrison intact, 3' west of fence. Set sign 1' north.

<u>References:</u>	<u>Bearing</u>	<u>Distance</u>
1) Set 3/4"x 24" round iron bar, down 2" in lawn 73' north of NW corner of house of 702 Park PL. 8' north of fire pit.	S70E	66.40'
2) Set 3/4"x 24" round iron bar, down 2" in lawn, 46' north of NW corner of house of 702 Park PL.	S53E	80.80'
3) Set 3/4"x 24" round iron bar, down 10" in field	S62W	45.52'
4) Set 3/4"x 24" round iron bar, down 10" in field	N72W	45.84'

Harrison and reference markers set on straight lines.

*Gary L. Dechant*  
WISCONSIN  
GARY L.  
DECHANT  
S-1744  
DOUGLAS, WI  
LAND SURVEYOR  
*November 19, 2018*

CERTIFICATE

I, Harley A. Sime, do hereby certify that on the 16 day of April 19 75, I found (evidence) ~~(no evidence)~~ of the S 1/4 corner of Section 12, T17 N, R 4W, Fourth Principal Meridian, and I re-established said corner according to the Wisconsin Statutes as shown and described hereon.

Dated this 15 day of Jan. 1976.

Harley A. Sime  
County Surveyor  
Title

CERTIFIED LAND CORNER

History of original corner establishment:

Description of corner evidence found:

Found a 2" iron pipe that had been used in previous surveys and was on record. Removed the pipe and replaced it with a Harrison marker.



No. 42

See Reverse Side For Maintenance

Description of corner and witness monuments, references and accessories used to perpetuate the original or re-established location of this corner:

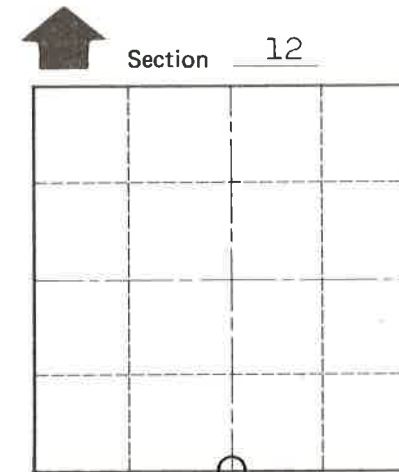
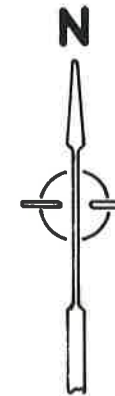
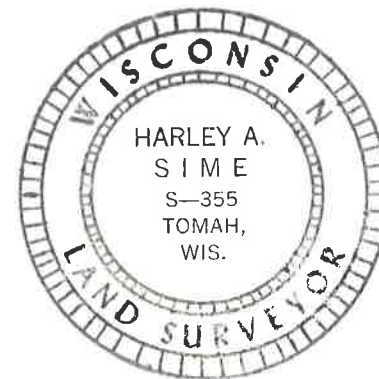
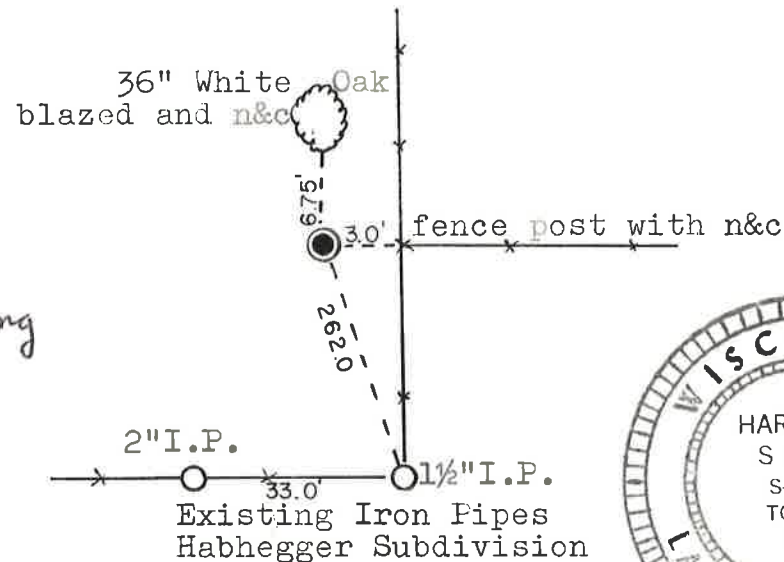
Set a Harrison, up 2".

Witnesses to corner location:

D. Malliet - Crew Chief

G. Sime

Douglas J. Malliet  
Witness: W.C. Jung W.C. Jung



O = LOCATION CORNER  
T 17 N R 4W  
WISCONSIN

COUNTY SURVEYOR FORM NO. 1

SURVEY CONTROL ORDER

Horizontal \_\_\_\_\_  
Vertical \_\_\_\_\_

WISCONSIN COORDINATE SYSTEM

Corner	East (X)	North (Y)	Elevation (Z)	Zone
Control Sta. Name				

City, Village or Town Sparta  
County of Monroe