

53

**U.S. PUBLIC LAND CORNER
MAINTENANCE**

**Corner ID : SW Sec. 7, T17N-R4W
21705120000**

<u>DATE</u>	<u>CREW</u>	<u>MONUMENT TYPE -----</u>
January 15, 2016	Zachariah P.Dechant Gary L. Dechant	Existing Harrison intact at fence corner

References:

	<u>Bearing</u>	<u>Distance</u>
1) Set 3/4"x24" iron bar, down 12" in field, 14' N & 14' E of fence corner	N42E	20.10'
2) Set 3/4"x24" iron bar, down 12" in field, 12' south of fence	S60E	23.30'
3) Set 3/4"x24" iron bar, down 12" in field, 6' west of fence	S11W	28.45
4) Set 3/4"x24" iron bar, down 12" in field, 18' N & 12" W of fence corner	N37W	20.46'



I, Harley A. Sime, do hereby certify that on the 25 day of April 19 75, I found ~~(evidence)~~ (no evidence) of the S.W. corner of Section 7, T 17 N, R 4W, Fourth Principal Meridian, and I re-established said corner according to the Wisconsin Statutes as shown and described hereon.

Dated this 19 day of Jan. 1976.
Harley A. Sime
County Surveyor
Title

History of original corner establishment:

**See Reverse Side
For Maintenance**

Description of corner evidence found:

Accepted the occupied fence corner as the best available evidence. Said corner fits the West line of the Township.

Description of corner and witness monuments, references and accessories used to perpetuate the original or re-established location of this corner:

Set a Harrison marker at the fence corner, up 5".

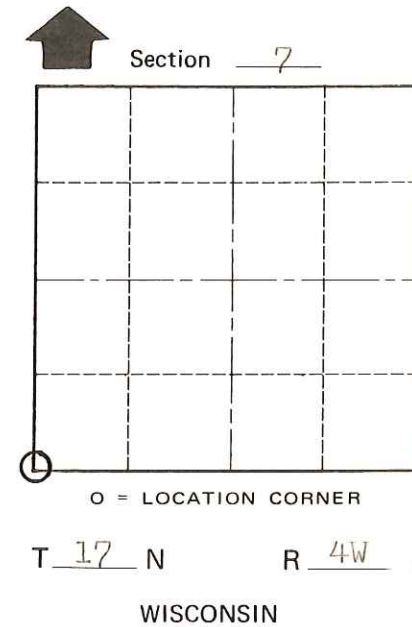
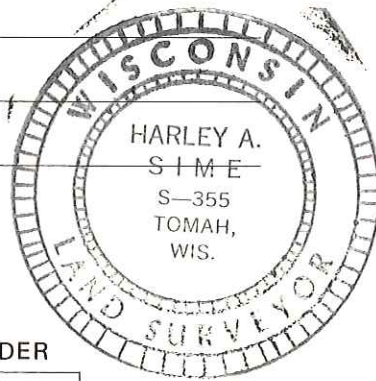
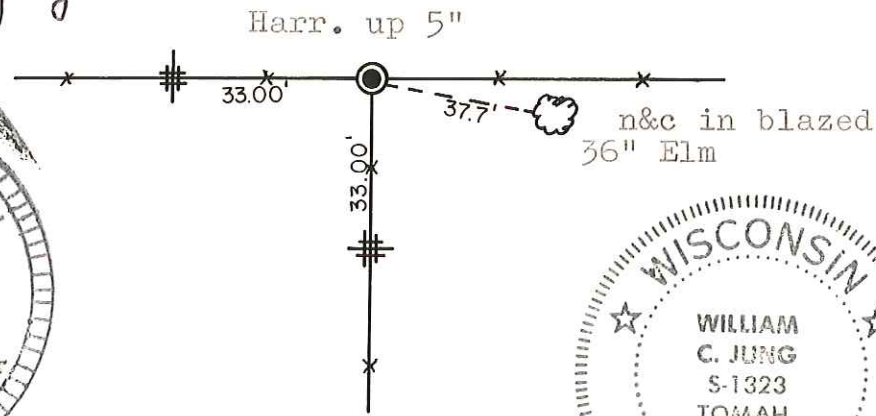
⚡ = 3/4" Iron Bar Set

Witnesses to corner location:

W.C. Jung - Crew Chief W.C. Jung

A. Lueck

D. Malliet



SURVEY CONTROL ORDER

Horizontal _____
Vertical _____

WISCONSIN COORDINATE SYSTEM

Corner	East (X)	North (Y)	Elevation (Z)	Zone
Control Sta. Name				

City, Village or Town Sparta

County of Monroe

COUNTY SURVEYOR FORM NO. 1