

U.S. LAND CORNER MAINTENANCE

Corner ID : W1/4 Sec. 6, T17N-R4W
21705012000

<u>DATE</u>	<u>CREW</u>	<u>MONUMENT TYPE</u> -----
August 17, 2013	Zachariah P. Dechant Gary L. Dechant	Existing Harrison and sign, placed 6' anchor and concrete around Harrison

References:

Set 1"x24" iron pipe, down 14" in middle of narrow field
Set 1"x24" iron pipe, down 6", 4' SE of 16" White Oak
Set 1"x24" iron pipe, down 8" in middle of small field
Set 1"x24" iron pipe, down 4", north edge of field, south edge narrow tree/brush line between fields

Bearing

N18W
N31E
N89E
S64W

Distance

39.55'
49.75'
27.22'
17.88'

Gary L. Dechant

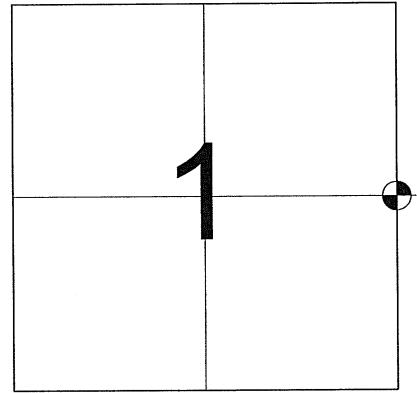
August 17, 2013

MAINTENANCE- PUBLIC LAND SURVEY MONUMENT RECORD

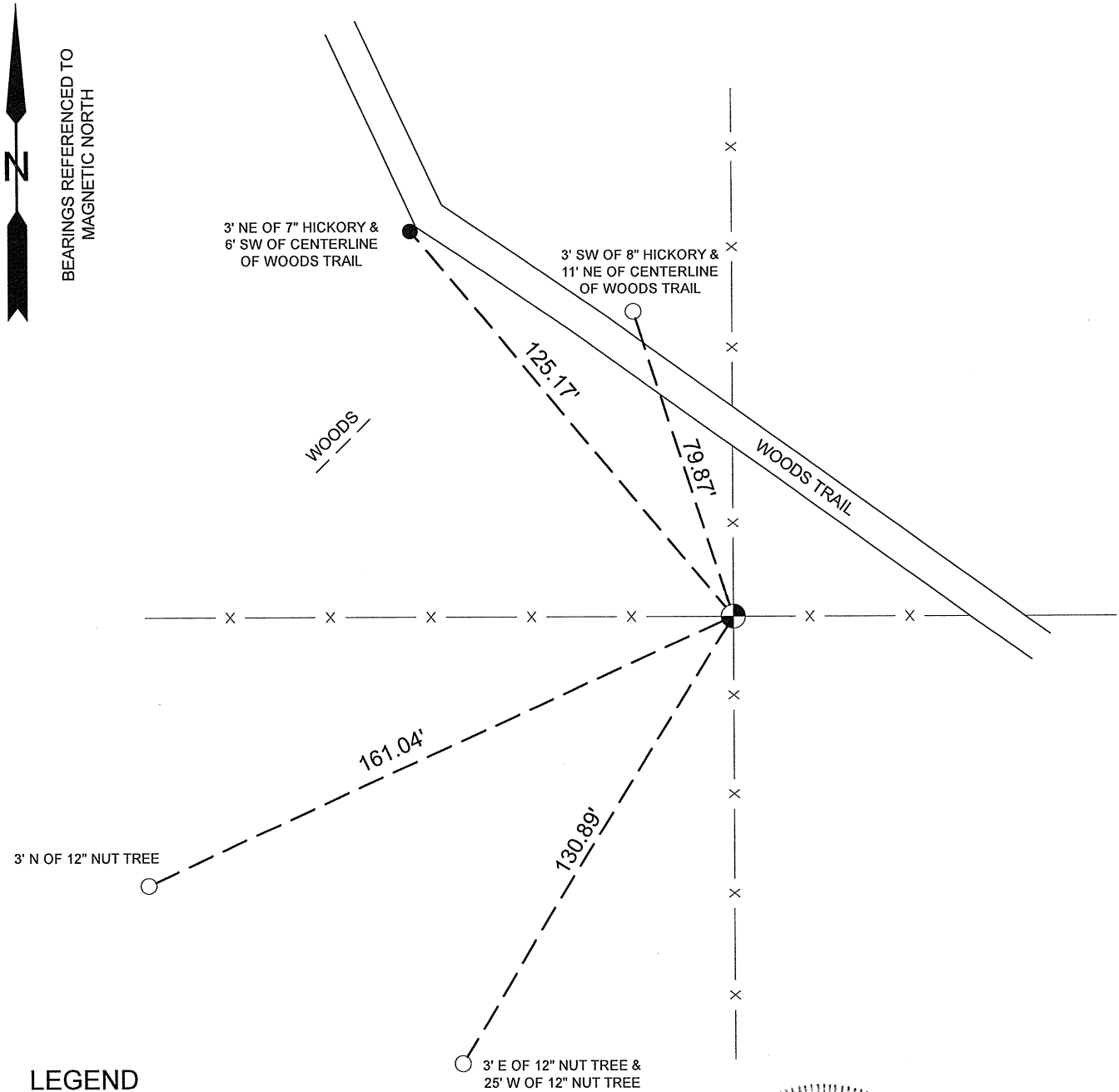
TIE SHEET UPDATE-21705012000 (LA CROSSE COUNTY INDEX 26H)

2011-51

Pete Follansbee and I performed maintenance work on this corner on August 3, 2011. We found the Harrison marker of record at the corner at a fence intersection. We found 1 of H. Sime's ties and established 4 new as shown below.



LOCATION OF LANDMARK



BEARINGS REFERENCED TO
MAGNETIC NORTH

3' N OF 12" NUT TREE

LEGEND

- HARRISON MARKER
- SET 3/4"X24" IRON REBAR (1.50lbs/ft)
- SET 3/4"X24" IRON BAR (1.50lbs/ft)



Bryan H. Meyer
 Bryan H. Meyer
 La Crosse County Surveyor

8/11/2011
 Date

CORNER ID:
21705012000

CERTIFICATE

I, Harley A. Sime, do hereby certify that on the 26 day of March 1975, I found ~~(evidence)~~ (no evidence) of the W 1/4 corner of Section 6, T17 N, R 4 W, Fourth Principal Meridian, and I re-established said corner according to the Wisconsin Statutes as shown and described hereon.

Dated this 14 day of Jan. 1976.

Harley A. Sime

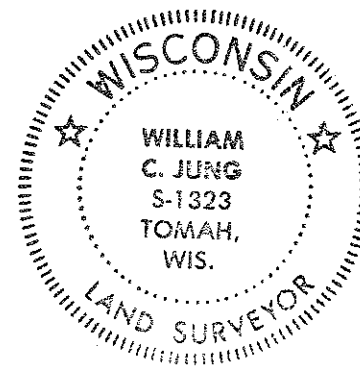
County Surveyor
Title

CERTIFIED LAND CORNER

History of original corner establishment:

Description of corner evidence found:

Accepted "strong" occupied 4-way fence corner as the best available evidence.



No. 14

21705012000

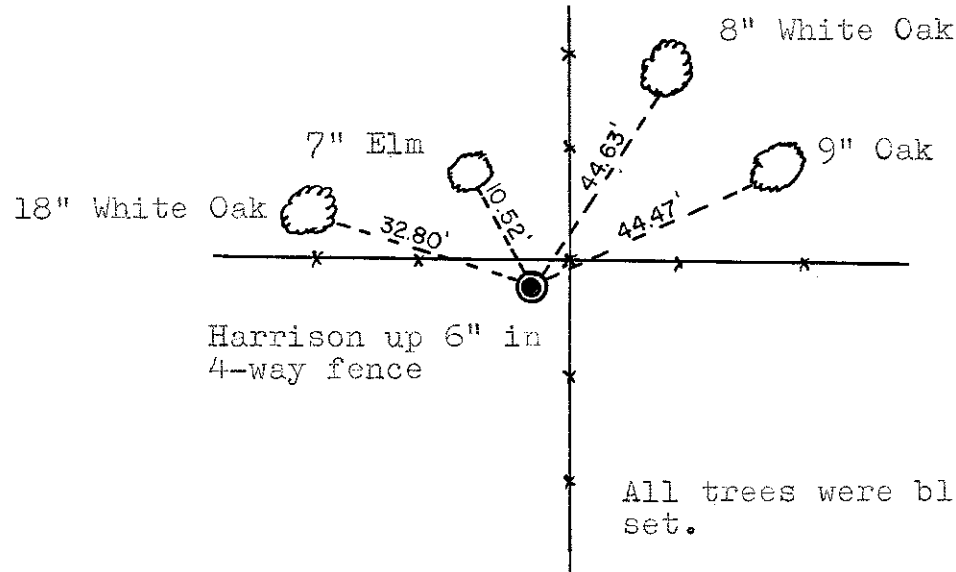
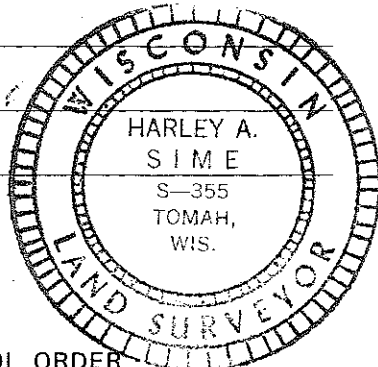
Description of corner and witness monuments, references and accessories used to perpetuate the original or re-established location of this corner:
Set Harrison marker, up 6".

Witnesses to corner location:

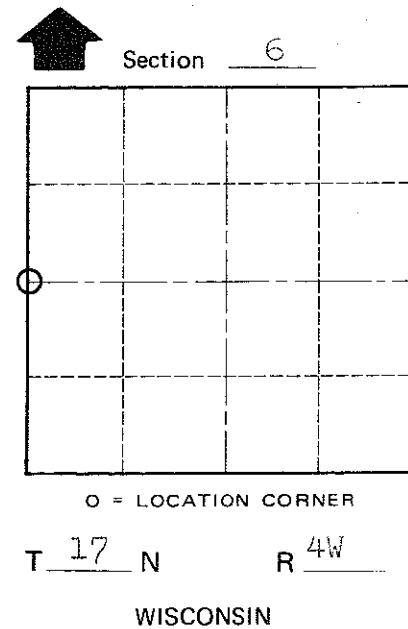
W.C. Jung - Crew Chief *W.C. Jung*

D. Malliet

A. Lueck



All trees were blazed and n&c set.



COUNTY SURVEYOR FORM NO. 1

SURVEY CONTROL ORDER

Horizontal	_____
Vertical	_____

WISCONSIN COORDINATE SYSTEM

Corner	East (X)	North (Y)	Elevation (Z)	Zone
Control Sta. Name				

City, Village or Town Sparta
County of Monroe