

CERTIFICATE

CERTIFIED LAND CORNER

No. 44

21704110020

I, Harley A. Sime, do hereby certify that on the 18 day of July 1975, I found (evidence) (~~no evidence~~) of the S 1/4 corner of Section 11, T 17 N, R 4W, Fourth Principal Meridian, and I re-established said corner according to the Wisconsin Statutes as shown and described hereon.

History of original corner establishment:

Description of corner evidence found:

Dated this 15 day of Jan. 1976.

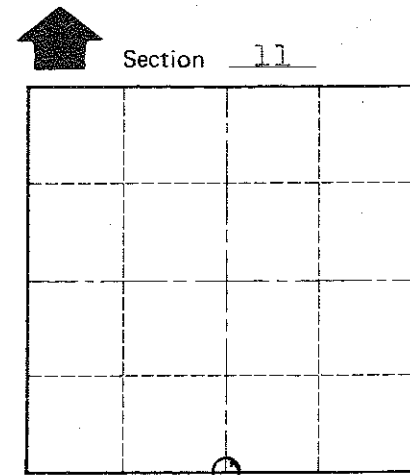
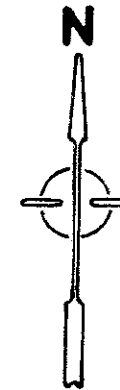
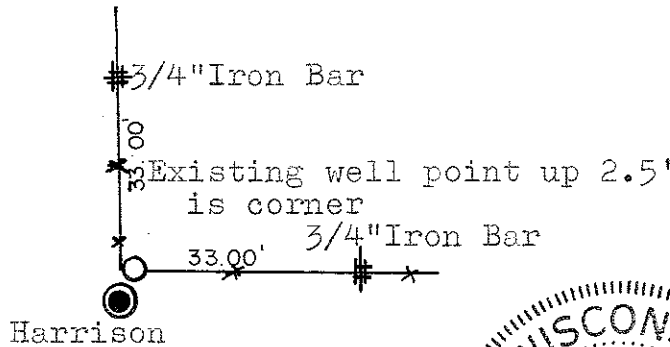
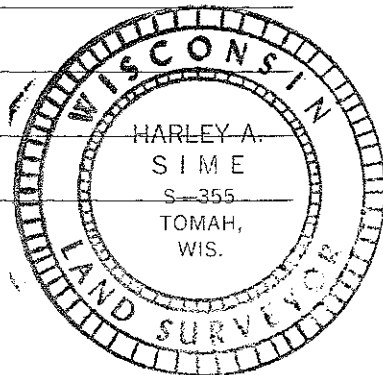
Found a well point at the occupied fence corner. The well point had been used in previous surveys. Set a Harrison marker next to the well point as a witness corner. The well point is the corner.

Harley A. Sime
County Surveyor
Title

Description of corner and witness monuments, references and accessories used to perpetuate the original or re-established location of this corner:
Set a Harrison, up 2", next to the well point.

Witnesses to corner location:

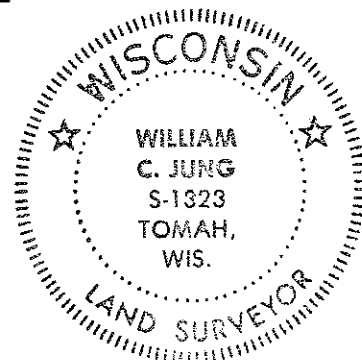
W.C. Jung - Crew Chief W.C. Jung
A. Lueck
G. Dechant



O = LOCATION CORNER

T 17 N R 4W
WISCONSIN

COUNTY SURVEYOR FORM NO. 1



SURVEY CONTROL ORDER

Horizontal _____
Vertical _____

WISCONSIN COORDINATE SYSTEM

Corner	East (X)	North (Y)	Elevation (Z)	Zone
Control Sta. Name				

City, Village or Town Sparta
County of Monroe