

# 43

**U.S. PUBLIC LAND CORNER  
MAINTENANCE**

**Corner ID : SE Sec.11, T17N-R4W  
21704110000**

DATE	CREW	MONUMENT TYPE -----
September 3, 2015	Zachariah P. Dechant Gary L. Dechant	Existing Railroad spike in center line CTH "B" that fits two remaining ties. Power pole NW 75.50' & iron pipe 52.72 feet west. Falls 94' north of driveway fire no. 15050

References:

	<u>Bearing</u>	<u>Distance</u>
1) Set 3/4"x24" round iron bar, down 6" in lawn	East	52.60
2) Set 3/4"x24" hex bar, down 6" in lawn, 12' north 7" Spruce	S62E	57.35'
3) Existing 1" iron pipe in east-west fence, east of survey sign	West	52.72'
4) Set 3/4"x24" hex iron bar, down, 6"	N62W	57.68'

Harrison & reference markers set on straight line.



I, Harley A. Sime, do hereby certify that on the 9 day of April 1975, I found (evidence) ~~(no evidence)~~ of the S.W. corner of Section 12, T 17 N, R 4W, Fourth Principal Meridian, and I re-established said corner according to the Wisconsin Statutes as shown and described hereon.

Dated this 15 day of Jan., 1976.

Harley A. Sime  
County Surveyor  
Title

History of original corner establishment:

Description of corner evidence found:

Found an iron bar in the center of C.T.H. "B" that had been used in previous surveys. Removed the iron bar and replaced it with a Harrison marker.



**See Reverse Side For Maintenance**

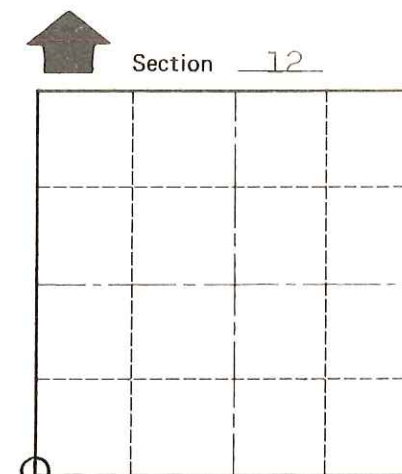
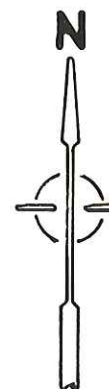
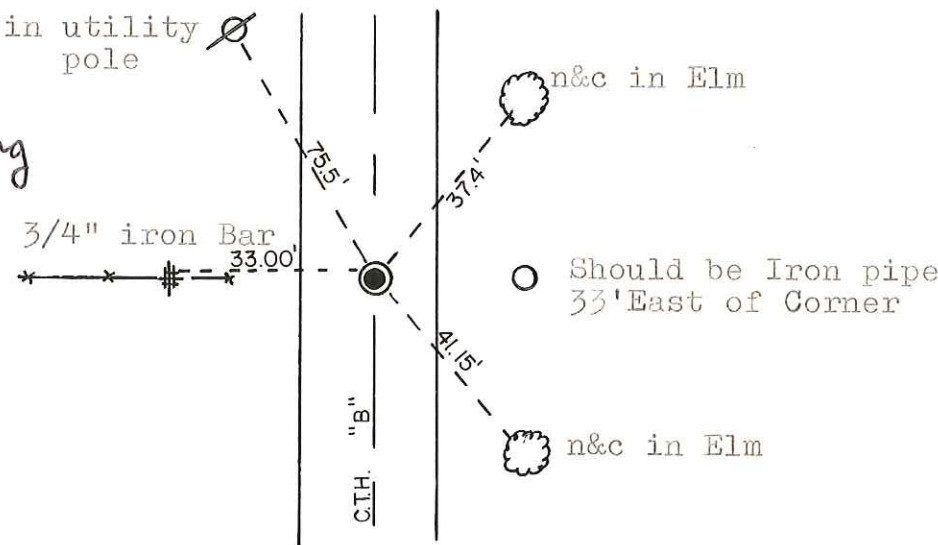
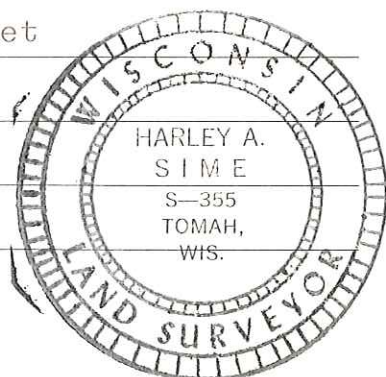
COUNTY SURVEYOR FORM NO. 1

Description of corner and witness monuments, references and accessories used to perpetuate the original or re-established location of this corner:

Set a Harrison in the center of the road, down 1". n&c in utility pole

Witnesses to corner location:

W.C. Jung - Crew Chief W.C. Jung  
D. Malliet  
G. Sime



O = LOCATION CORNER  
T 17 N R 4W  
WISCONSIN

SURVEY CONTROL ORDER

(trees not blazed)

Horizontal				
Vertical				
WISCONSIN COORDINATE SYSTEM				
Corner	East (X)	North (Y)	Elevation (Z)	Zone
Control Sta. Name				

City, Village or Town Sparta

County of Monroe