

CERTIFICATE

CERTIFIED LAND CORNER

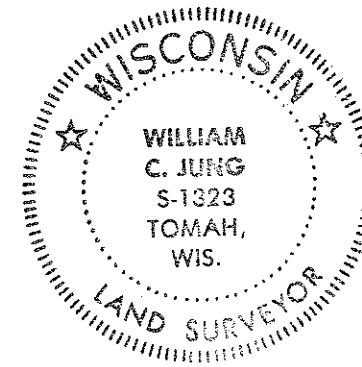
No. 50

21704080020

I, Harley A. Sime, do hereby certify that on the 6 day of May 1975, I found (evidence) ~~(no evidence)~~ of the S ¼ corner of Section 8, T 17 N, R 4 W, Fourth Principal Meridian, and I re-established said corner according to the Wisconsin Statutes as shown and described hereon.

Dated this 19 day of Jan. 1976.

Harley A. Sime
County Surveyor
Title



History of original corner establishment:

Description of corner evidence found:

Found an angle iron near a 3-way fence corner. The iron was not on record. Mr. R. Oswald said the iron had been put in about 1960 by another surveyor (Bergman?) The ½ mile distance West is long, but the corner fits the occupation East. Accepted the angle iron as the corner and placed a Harrison marker next to it as a witness corner.

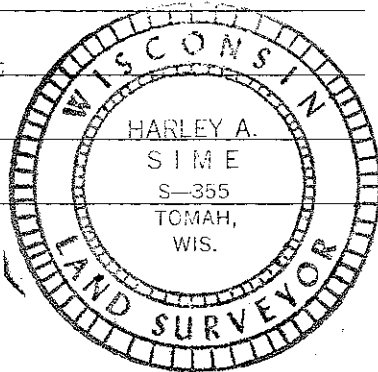
COUNTY SURVEYOR FORM NO. 1

Description of corner and witness monuments, references and accessories used to perpetuate the original or re-established location of this corner:

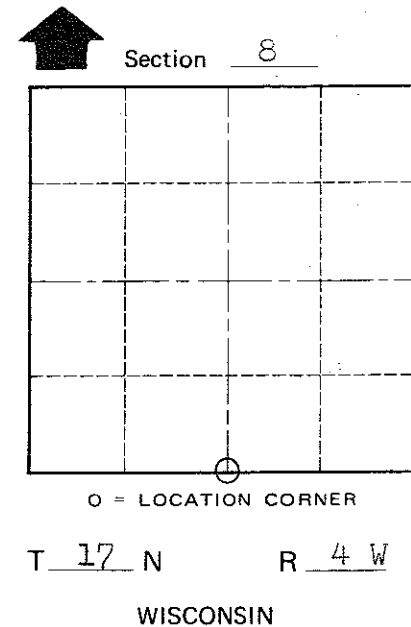
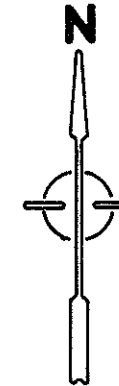
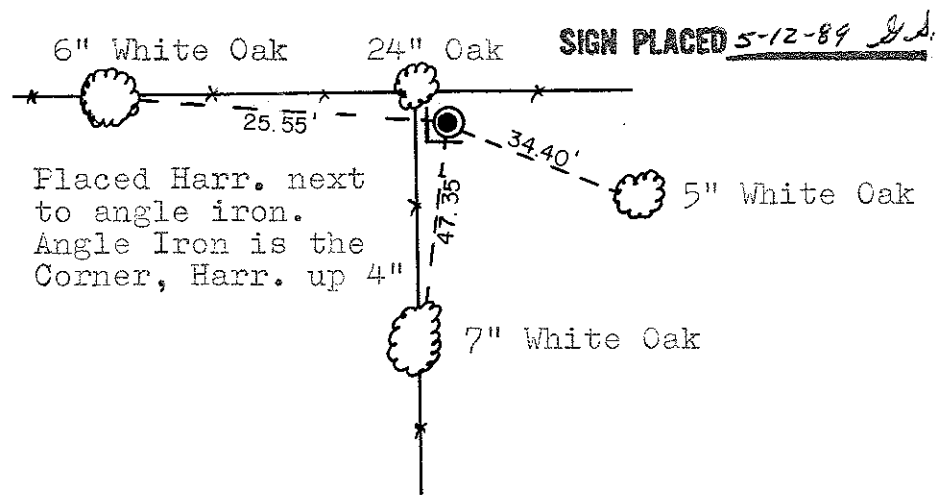
A well imbedded angle iron is the corner.

Witnesses to corner location:

W.C. Jung - Crew Chief W.C. Jung
A. Lueck
D. Malliet



All trees blazed.



SURVEY CONTROL ORDER

Horizontal _____
Vertical _____

WISCONSIN COORDINATE SYSTEM

Corner	East (X)	North (Y)	Elevation (Z)	Zone
Control Sta. Name				

City, Village or Town Sparta

County of Monroe