

49

**U.S. PUBLIC LAND CORNER
MAINTENANCE**

**Corner ID : SE Sec. 8, T17N-R4W
21704080000**

<u>DATE</u>	<u>CREW</u>	<u>MONUMENT TYPE</u> -----
October 16, 2015	Zachariah P. Dechant Gary L. Dechant	Found Harrison intact. Up 6" at fence corner at east end of gate. Sign on south side.

References:

	<u>Bearing</u>	<u>Distance</u>
1) Set 3/4"x24" round iron bar, down 12" in field	N28E	35.19'
2) Set 3/4"x24" round iron bar, down 6" in sparse young wooded area	S61E	20.66'
3) Set 3/4"x24" round iron bar, down 6", on line with west end of gate	S46W	25.15'
4) Set 3/4"x24" round iron bar, down 12" in field on line with west end of gate	N57W	23.42'



CERTIFICATE

I, Harley A. Sime, do hereby certify that on the 5 day of May 1975, I found ~~(evidence)~~ (no evidence) of the S.E. corner of Section 8, T 17 N, R 4W, Fourth Principal Meridian, and I re-established said corner according to the Wisconsin Statutes as shown and described hereon.

Dated this 19 day of May 1976.

Harley A. Sime
County Surveyor
Title

CERTIFIED LAND CORNER

History of original corner establishment:

Description of corner evidence found:

Accepted a 3-way fence as the best available evidence. Said corner fits surrounding sections very well. See the miscellaneous sheet behind cor. #36 for more detailed information.



No. 49

See Reverse Side For Maintenance

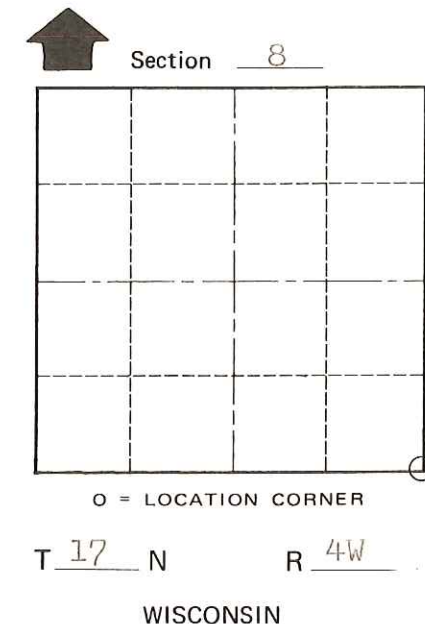
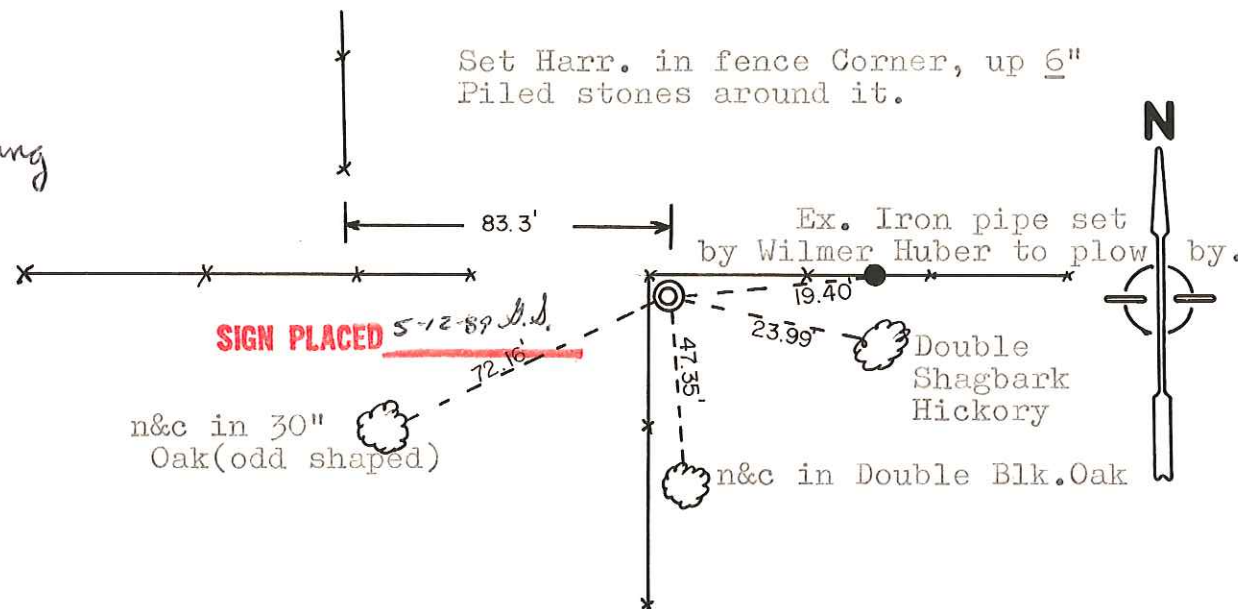
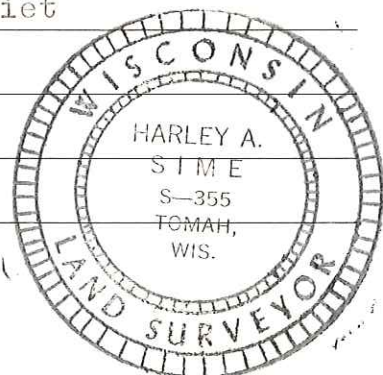
Description of corner and witness monuments, references and accessories used to perpetuate the original or re-established location of this corner:

Set a Harrison marker.

Witnesses to corner location:

W.C. Jung - Crew Chief *W.C. Jung*

D. Malliet



SURVEY CONTROL ORDER

Horizontal _____
Vertical _____

(All trees blazed.)

WISCONSIN COORDINATE SYSTEM

Corner	East (X)	North (Y)	Elevation (Z)	Zone
Control Sta. Name				

City, Village or Town Sparta

County of Monroe

COUNTY SURVEYOR FORM NO. 1