

# 31

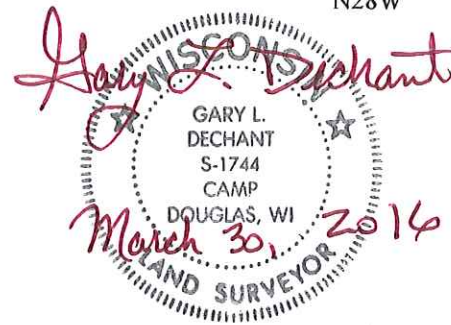
**U.S. PUBLIC LAND CORNER  
MAINTENANCE**

**Corner ID : SE Sec. 6, T17N-R4W  
21704060000**

DATE	CREW	MONUMENT TYPE -----
December 10, 2015	Zachariah P.Dechant Gary L. Dechant	Existing Harrison, top broke off, down 8" 96' west of CTH "BC", Set sign 1' West 30' SE of power pole

References:

	Bearing	Distance
1) Set 3/4"x24" iron bar, down 6", 6' SW of 10" Box Elder	NE	17.50'
2) Set 3/4"x24" iron bar, down 6" in center of field road	S33E	39.20'
3) Set 3/4"x24" iron bar, down, 6" in center of field road	S70W	31.94'
4) Set 3/4"x24" iron bar, down 6", swampy	N28W	24.69'



I, William C. Jung, do hereby certify that on the 5th day of January 1983, I found (evidence) ~~(no evidence)~~ of the Southwest corner of Section 5, T 17 N, R 4 W Fourth Principal Meridian, and I re-established said corner according to the Wisconsin Statutes as shown and described hereon.

Dated this 20th day of July 1983.

William C. Jung

Deputy County Surveyor, R.L.S. 1323  
Title

History of corner establishment since Original Government Survey

I set a Harrison marker at the occupied corner on April 18, 1975. Larry Feddersen used this Harrison as the corner in a survey done in Section 8 in June of 1976. Doug Malliet used this Harrison as the corner in surveys done in Section 8 in March of 1977 and February of 1978. This corner location also agrees with the Town Road records of May, 1880. In February of this year, Bryan Meyer used this corner while doing a road relocation survey.

This corner had to be removed due to road construction this spring, that being the relocation of C.T.H. "B". I removed the old Harrison on April 1st. On July 8, I set a new Harrison marker at the old corner location

See Reverse Side For Maintenance

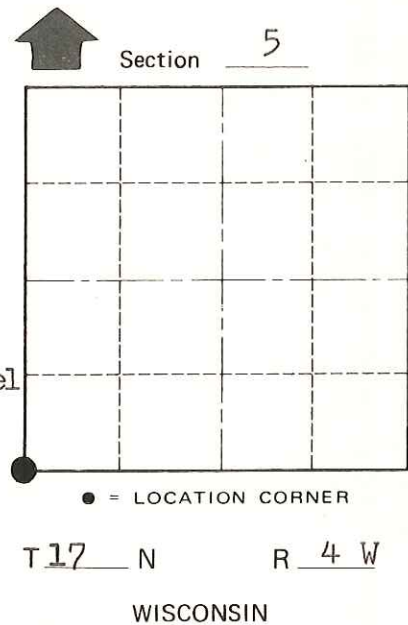
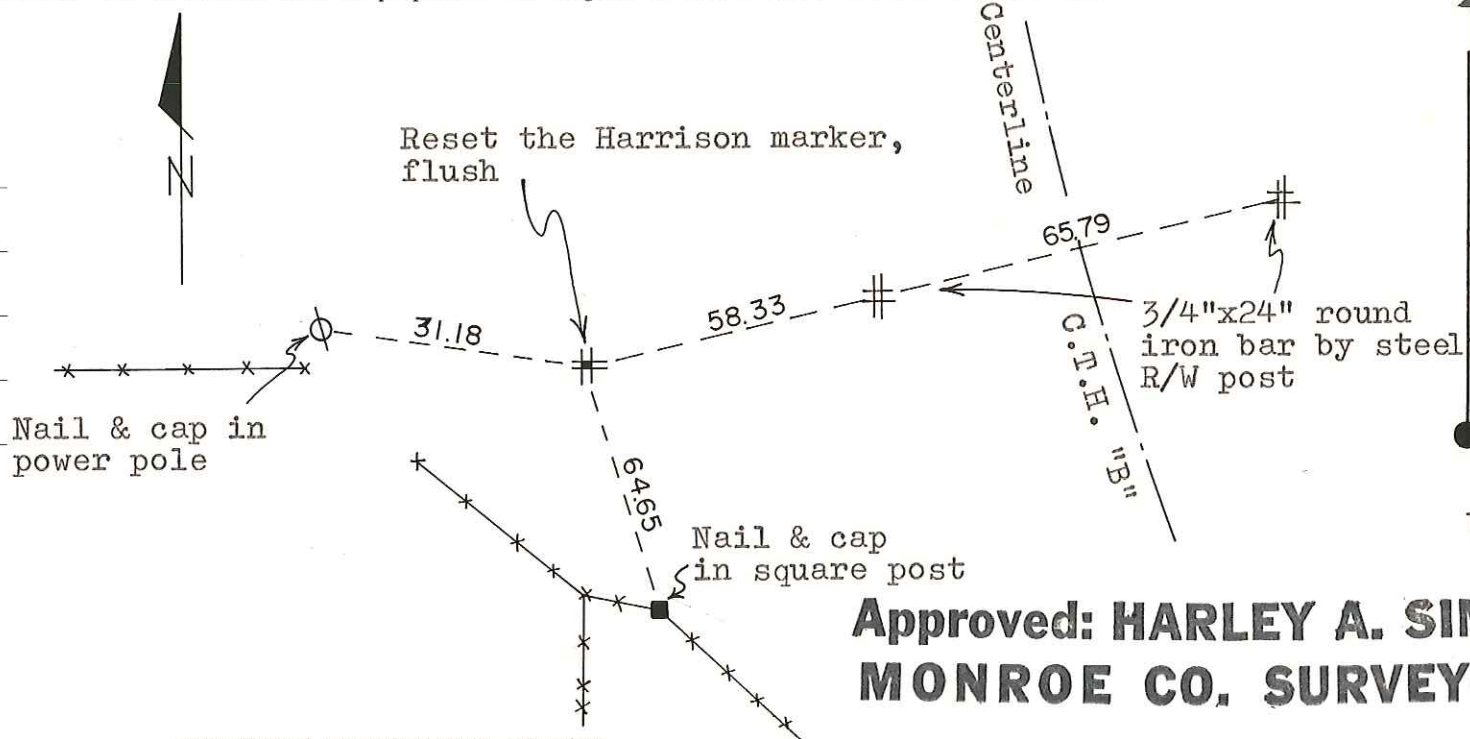
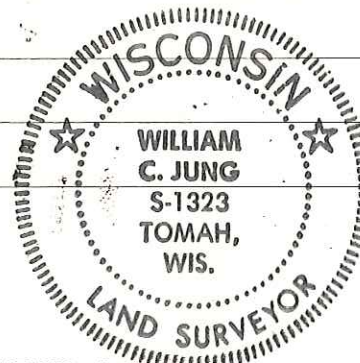
COUNTY SURVEYOR FORM NO. 1

Description of corner and witness monuments, references and accessories used to perpetuate the original or re-established location of this corner:

Witnesses to corner location:

William Jung

Dallas Wilhite



Approved: HARLEY A. SIME  
MONROE CO. SURVEYOR

SURVEY CONTROL ORDER

Horizontal	_____
Vertical	_____

WISCONSIN COORDINATE SYSTEM

Corner	East (X)	North (Y)	Elevation (Z)	Zone
Control Sta. Name				

City, Village or Town Sparta  
County of Monroe  
Wisconsin

I, Harley A. Sime, do hereby certify that on the 18 day of April 1975, I found ~~(evidence)~~ (no evidence) of the S.W. corner of Section 5, T. 17 N, R. 4W, Fourth Principal Meridian, and I re-established said corner according to the Wisconsin Statutes as shown and described hereon.

Dated this 14 day of Jan. 1976.

Harley A. Sime  
County Surveyor  
Title

History of original corner establishment:

**See Reverse Side  
For Maintenance**

Description of corner evidence found:

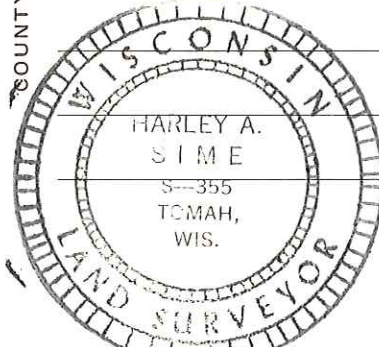
Accepted intersection of the existing fences and the road to the North as the best available evidence. This fits the original government distance to the North and also fits the occupied bearing and distance to the North (1/4 corner and Town Line). The corner as set is also on line with the E1/4 corner of Sec. 7 and the S.E. corner of Section 7. The distance West to the 1/4 corner fits fairly well. See the sheet for corner #30 for more information.

Description of corner and witness monuments, references and accessories used to perpetuate the original or re-established location of this corner:

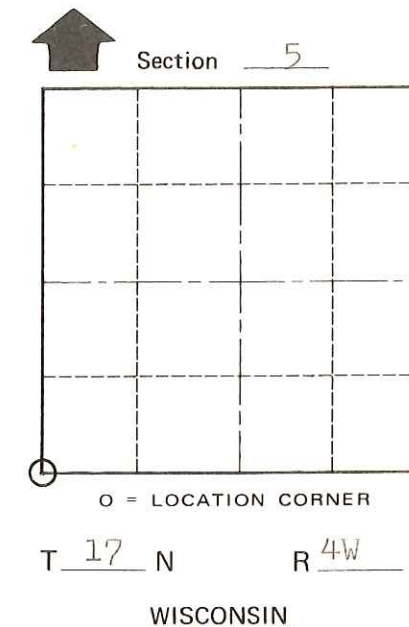
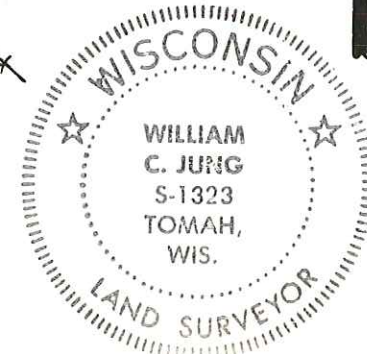
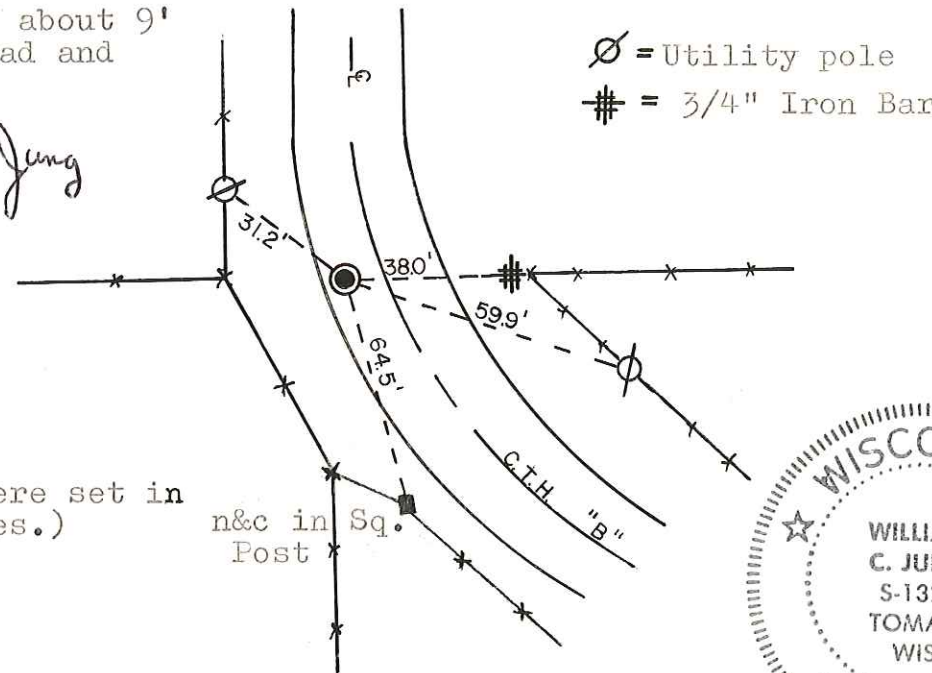
Set a Harrison marker, down 4", about 9' off the West shoulder of the road and 31' East of the fence corner.  
Witnesses to corner location:

W.C. Jung - Crew Chief W.C. Jung  
D. Malliet

COUNTY SURVEYOR FORM NO. 1



(Note: n&c's were set in the poles.)



SURVEY CONTROL ORDER

Horizontal	_____
Vertical	_____

WISCONSIN COORDINATE SYSTEM

Corner	East (X)	North (Y)	Elevation (Z)	Zone
Control Sta. Name				

City, Village or Town Sparta

County of Monroe