

CERTIFICATE

CERTIFIED LAND CORNER

No. 16

21704052000

I, Harley A. Sime, do hereby certify that on the 28th day of January 1976, I found ~~(evidence)~~ (no evidence) of the E1/4 corner of Section 5, T 17 N, R 4 W Fourth Principal Meridian, and I re-established said corner according to the Wisconsin Statutes as shown and described hereon.

History of original corner establishment:

Description of corner evidence found:

Dated this 29th day of Jan. 1976.

Harley A. Sime
County Surveyor
Title

Set the corner proportionately between the section corners. This is on line with the occupied 1/4 line to the West but does not line up with the fence to the South. Field evidence and aerial photos shoe the latter fence to bear in a direction of S8.5°W, more or less, and is thus well off line.

Note: There may be a 3/4"x24" iron bar buried 38 ft. East. If so, disregard this as it is just a survey point and was buried when the road was rebuilt in the summer of 1975.

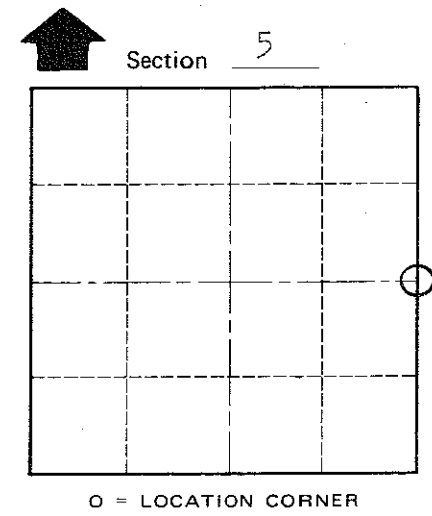
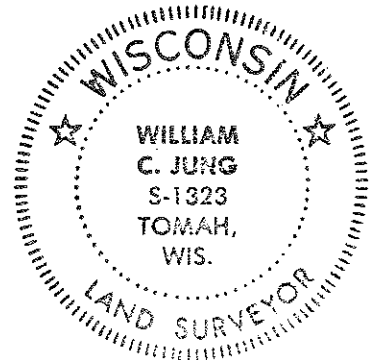
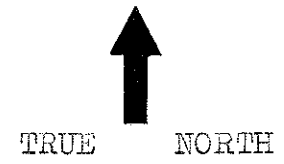
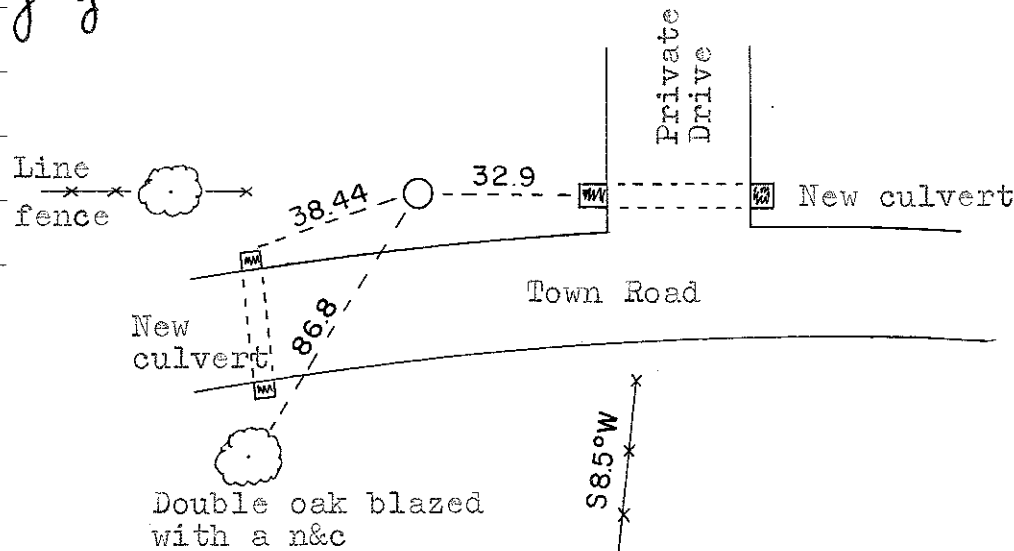
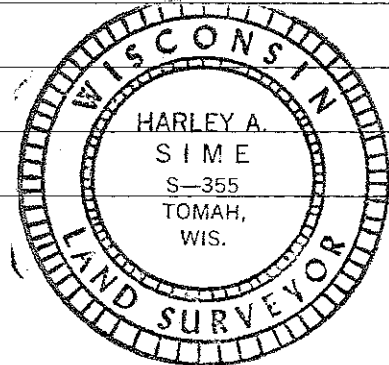
Description of corner and witness monuments, references and accessories used to perpetuate the original or re-established location of this corner:

Set a Harrison marker in the ditch, up 2", 38 ft. West of the South fence projected North.

Witnesses to corner location:

W.C. Jung - Crew Chief W.C. Jung
D. Malliet

COUNTY SURVEYOR FORM NO. 1



T 17 N R 4 W
WISCONSIN

SURVEY CONTROL ORDER

Horizontal	_____
Vertical	_____

Corner	East (X)	North (Y)	Elevation (Z)	Zone
Control Sta. Name				

City, Village or Town Sparta
County of Monroe