

CERTIFICATE

CERTIFIED LAND CORNER

No. 30

21704050020

I, Harley A. Sime, do hereby certify that on the 20th day of January 1976, I found (evidence) (no evidence) of the S 1/4 corner of Section 5, T 17 N, R 4 W Fourth Principal Meridian, and I re-established said corner according to the Wisconsin Statutes as shown and described hereon.

Dated this 21st day of Jan. 1976.

*Harley A. Sime*

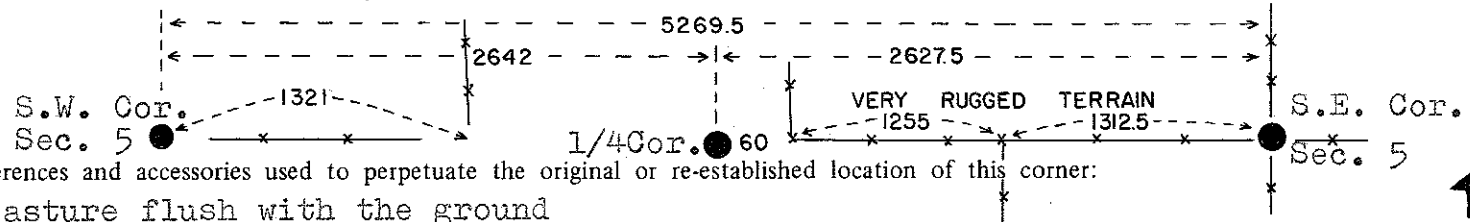
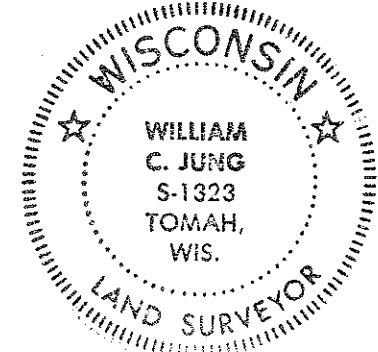
County Surveyor

Title

History of original corner establishment:

Description of corner evidence found:

Set the corner on line between the section corners and at distances from both that would match the occupied 1/8 corners. Field measurements and aerial photos show the fence corner at the 1/4 corner to be greatly in error, and thus was not accepted.



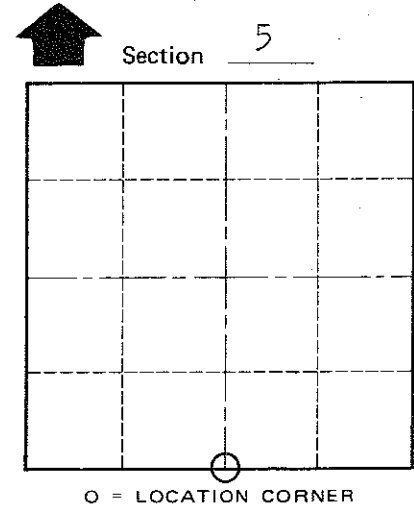
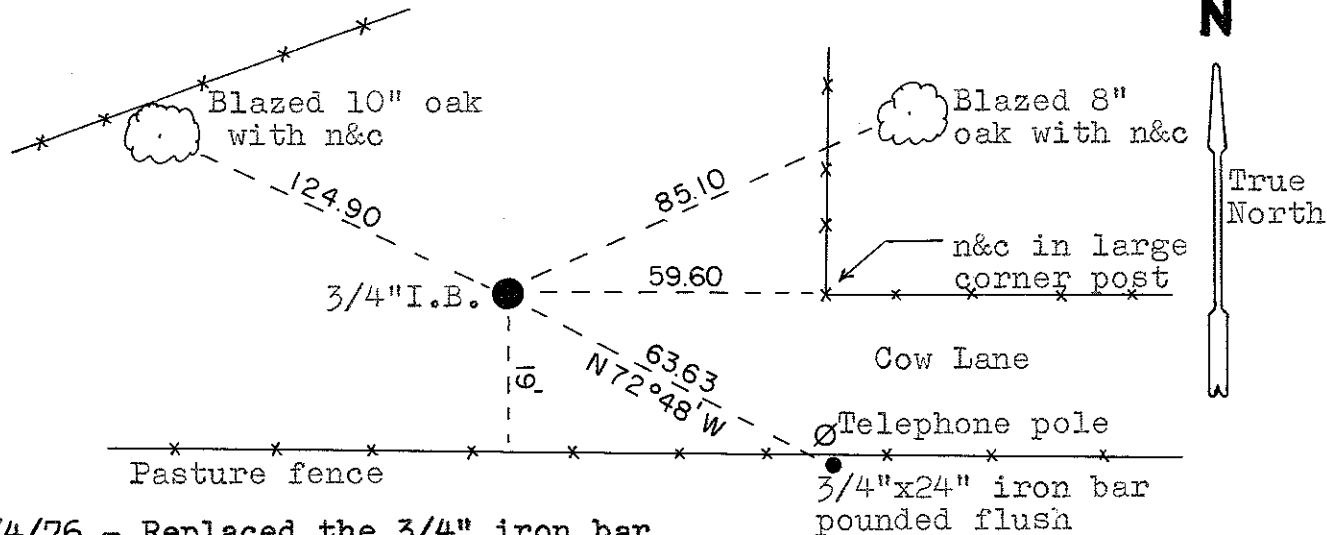
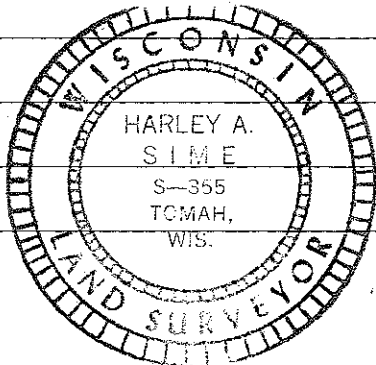
Description of corner and witness monuments, references and accessories used to perpetuate the original or re-established location of this corner:

Set 3/4"x24" iron bar in the pasture flush with the ground

Witnesses to corner location:

W.C. Jung - Crew Chief *W.C. Jung*

G. Sime



**IMPORTANT!** 6/4/76 - Replaced the 3/4" iron bar with a Harrison marker. Crew - Jung, Dechant *wel*

SURVEY CONTROL ORDER

|            |       |
|------------|-------|
| Horizontal | _____ |
| Vertical   | _____ |

WISCONSIN COORDINATE SYSTEM

| Corner            | East (X) | North (Y) | Elevation (Z) | Zone |
|-------------------|----------|-----------|---------------|------|
| Control Sta. Name |          |           |               |      |

City, Village or Town Sparta

County of Monroe

COUNTY SURVEYOR FORM NO. 1