

CERTIFICATE

CERTIFIED LAND CORNER

No. 29

21704050000

I, Harley A. Sime, do hereby certify that on the 17 day of March 1975, I found (evidence) (~~no evidence~~) of the N.E. corner of Section 8, T 17 N, R 4 W, Fourth Principal Meridian, and I re-established said corner according to the Wisconsin Statutes as shown and described hereon.

Dated this 14 day of Jan 1976.

Harley A. Sime
County Surveyor
Title

History of original corner establishment:

Description of corner evidence found:

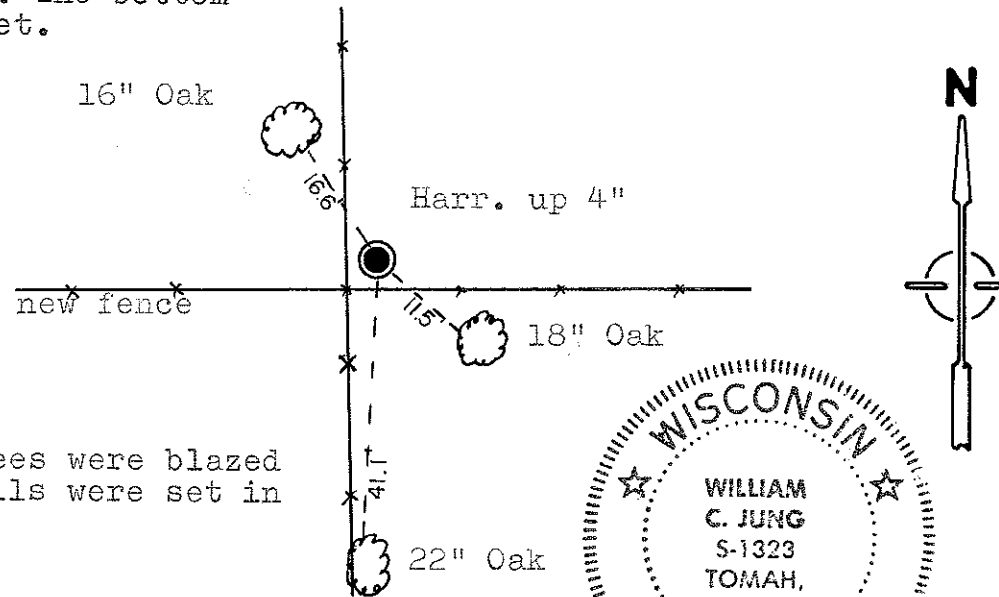
Found a 1" iron pipe, up 12", used in a survey of May, 1972. Removed said pipe and replaced it with a Harrison marker. This corner was verified as the original government corner by Mr. Tracy Humphrey. See the miscellaneous sheet behind corner #36 for more detailed information.

Description of corner and witness monuments, references and accessories used to perpetuate the original or re-established location of this corner:

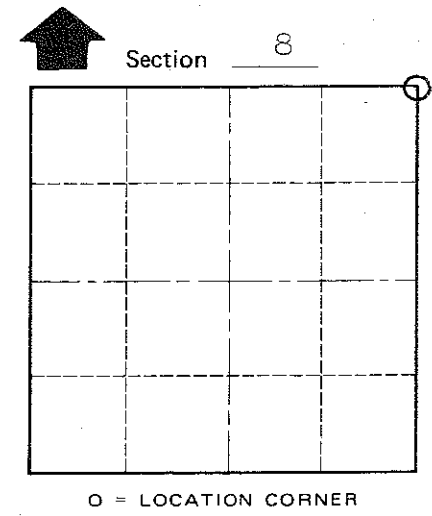
Removed I.P. and set a Harrison, up 4". The bottom of the I.P. broke off and is down 2 feet.

Witnesses to corner location:

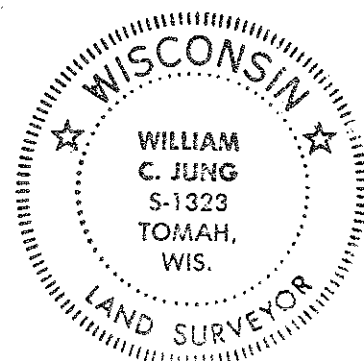
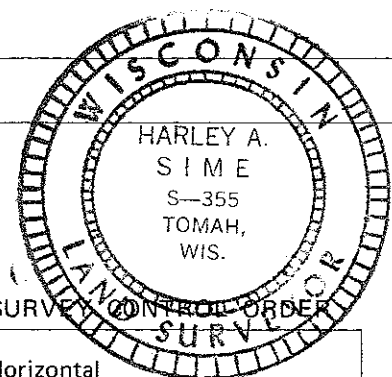
W.C. Jung - Crew Chief W.C. Jung
D. Malliet
A. Lueck



Note: All trees were blazed and nails were set in them.



T 17 N R 4 W
WISCONSIN



COUNTY SURVEYOR FORM NO. 1

SURVEY CONTROL ORDER
Horizontal _____
Vertical _____

WISCONSIN COORDINATE SYSTEM

Corner	East (X)	North (Y)	Elevation (Z)	Zone
Control Sta. Name				

City, Village or Town Sparta
County of Monroe