

# 28

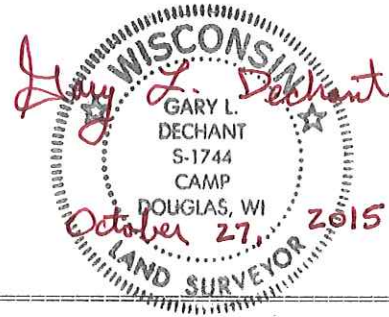
**U.S. PUBLIC LAND CORNER  
MAINTENANCE**

**Corner ID :** S1/4 Sec. 4, T17N-R4W  
**21704040020**

| <u>DATE</u>     | <u>CREW</u>                             | <u>MONUMENT TYPE -----</u>   |
|-----------------|---|--|
| October 5, 2015 | Zachariah P. Dechant<br>Gary L. Dechant | Found Harrison broken and severely leaning.<br>Replaced with 3/4"x6' hex iron bar. Place pieces<br>of Harrison around iron bar & flat stone. |

References:

|  | <u>Bearing</u> | <u>Distance</u> |
|--|----------------|-----------------|
| 1) Set 3/4"x24" round iron bar, down 6", 4' east of 10" Hickory                        | N39E           | 27.20'          |
| 2) Set 3/4"x24" round iron bar, down 6", south side of trail                           | S88E           | 20.29'          |
| 3) Set 3/4"x24" round iron bar, down 6", 3' east of concrete post                      | S10W           | 18.06"          |
| 4) Set 3/4"x24" round iron bar, down 6", north side of trail leading to pond and cabin | N4W            | 24.48'          |



I, Harley A. Sime, do hereby certify that on the 5 day of May 19 75, I found ~~(evidence)~~ (no evidence) of the N 1/4 corner of Section 9, T 17 N, R 4W, Fourth Principal Meridian, and I re-established said corner according to the Wisconsin Statutes as shown and described hereon.

Dated this 14 day of Jan. 1976.  
Harley A. Sime  
 County Surveyor  
 Title

History of original corner establishment:

Description of corner evidence found:

Set the corner by projecting a line through the Center 1/4 corner of Sec. 9 and the South 1/4 corner of Sec. 9 and intersecting this line with the North line of Sec. 9 extended between the N.E. and N.W. corners of said section.

**See Reverse Side  
For Maintenance**

COUNTY SURVEYOR FORM NO. 1

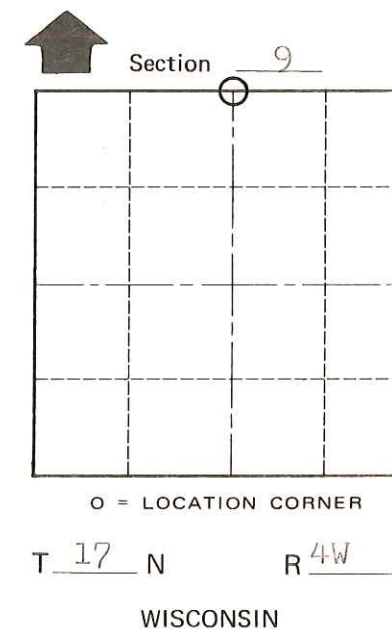
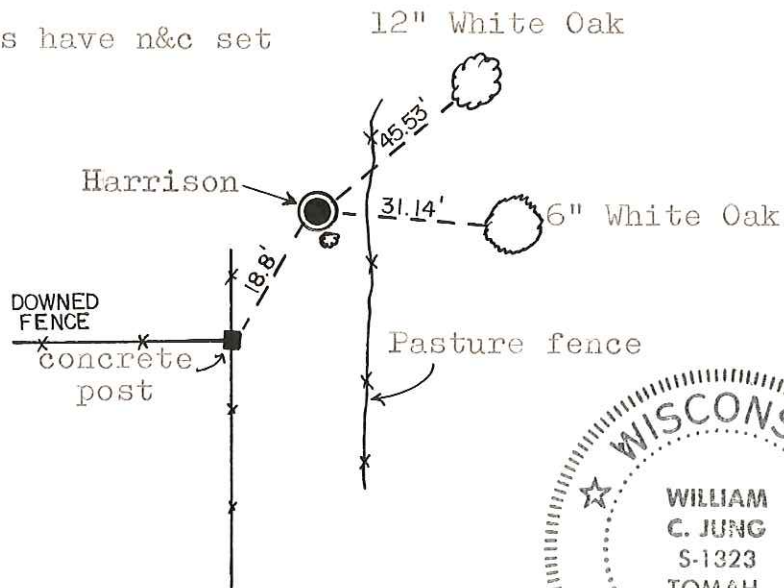
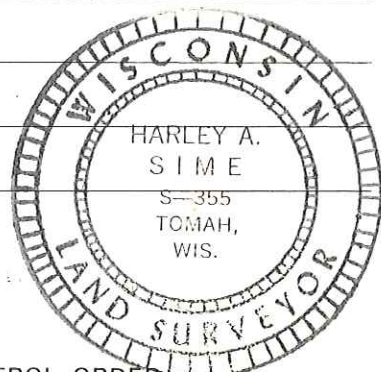
Description of corner and witness monuments, references and accessories used to perpetuate the original or re-established location of this corner:

Set a Harrison marker N.W. of a aspen.

All trees have n&c set 12" White Oak

Witnesses to corner location:

W.C. Jung - Crew Chief W.C. Jung  
D. Malliet



SURVEY CONTROL ORDER

| SURVEY CONTROL ORDER |          | WISCONSIN COORDINATE SYSTEM |           |               |      |
|----------------------|----------|-----------------------------|-----------|---------------|------|
| Horizontal           | Vertical | East (X)                    | North (Y) | Elevation (Z) | Zone |
| Corner               |          |                             |           |               |      |
| Control Sta. Name    |          |                             |           |               |      |

City, Village or Town Sparta  
 County of Monroe