

CERTIFICATE

CERTIFIED LAND CORNER

No. 18

21704032000

I, Harley A. Sime, do hereby certify that on the 2 day of May, 1975, I found ~~(evidence)~~ (no evidence) of the E 1/4 corner of Section 3, T 17 N, R 4W, Fourth Principal Meridian, and I re-established said corner according to the Wisconsin Statutes as shown and described hereon.

History of original corner establishment:

Replaced N/A With N/A
 On 8/20/82 Crew: Jung, Meyer
 Comments Set a 4"x4" wood post w/witness sign by South side of Harrison. Harrison is down 6"±.

Dated this 14 day of Jan., 1976.

Harley A. Sime

County Surveyor

Description of corner evidence found:

Accepted occupied fence corner as the best available evidence. After the three corners were set along the East line of Sec. 3, it was noted that the 1/4 corner as set falls at distances almost in direct proportion to the original government notes.

COUNTY SURVEYOR FORM NO. 1

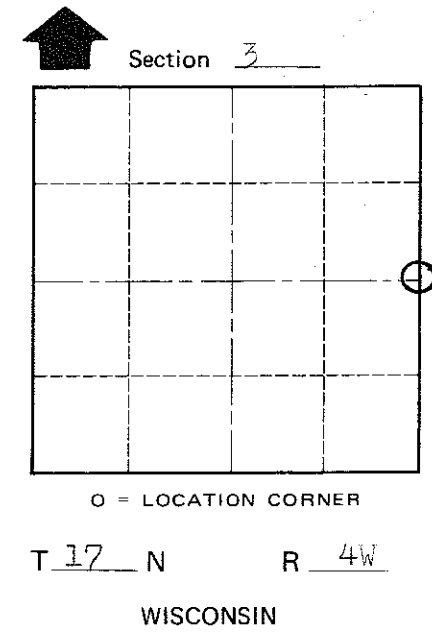
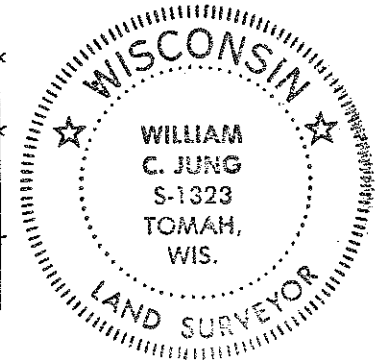
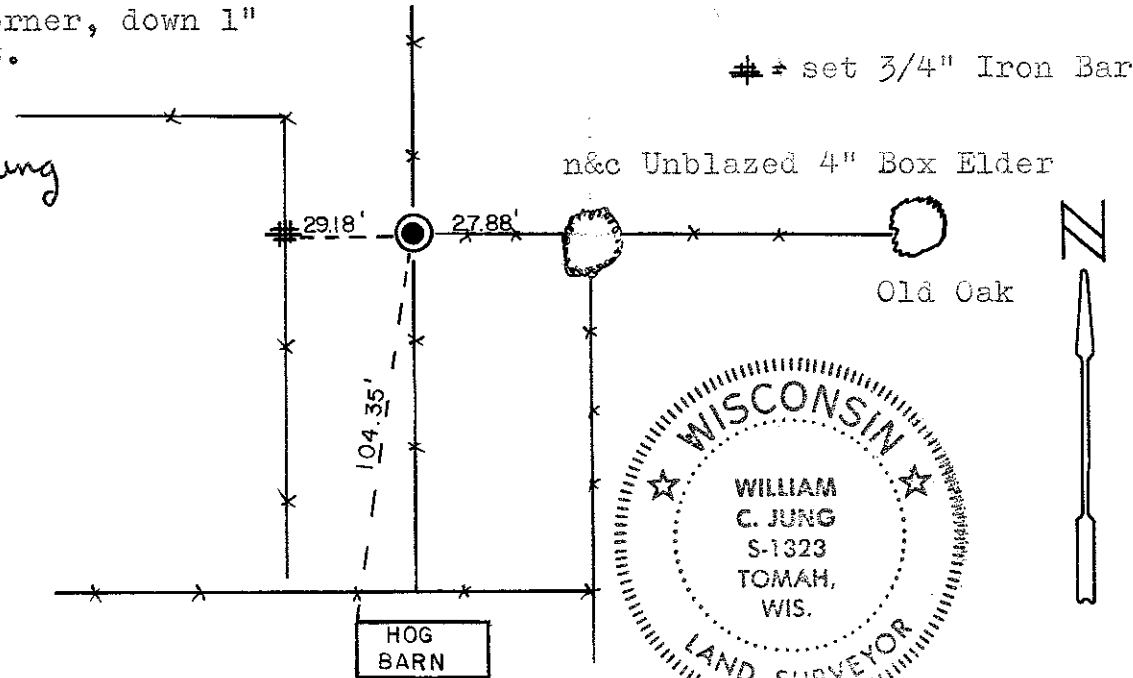
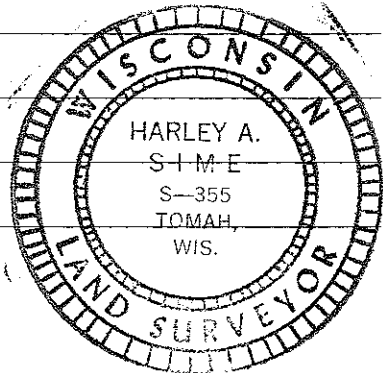
Description of corner and witness monuments, references and accessories used to perpetuate the original or re-established location of this corner:

Set Harrison marker at fence corner, down 1" so the cows wouldn't step on it.

Witnesses to corner location:

W.C. Jung - Crew Chief *W.C. Jung*

A. Lueck



SURVEY CONTROL ORDER

Horizontal	_____
Vertical	_____

WISCONSIN COORDINATE SYSTEM

Corner	East (X)	North (Y)	Elevation (Z)	Zone
Control Sta. Name				

City, Village or Town Sparta

County of _____