

CERTIFICATE

CERTIFIED LAND CORNER

No. 26

I, Harley A. Sime, do hereby certify that on the 20th day of January 1976, I found ~~(evidence)~~ (no evidence) of the S 1/4 corner of Section 3, T 17 N, R 4 W, Fourth Principal Meridian, and I re-established said corner according to the Wisconsin Statutes as shown and described hereon.

Dated this 21st day of Jan. 19 76.

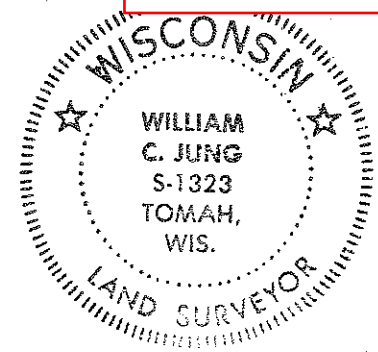
Harley A. Sime
County Surveyor
Title

History of original corner establishment:

Description of corner evidence found:

Set the corner by single proportionate measurement between the section corners.

21704030020



IMPORTANT! 6/4/76 - Replaced the P.K. nail with a Harrison marker.
Crew - Jung, Dechant *wey*

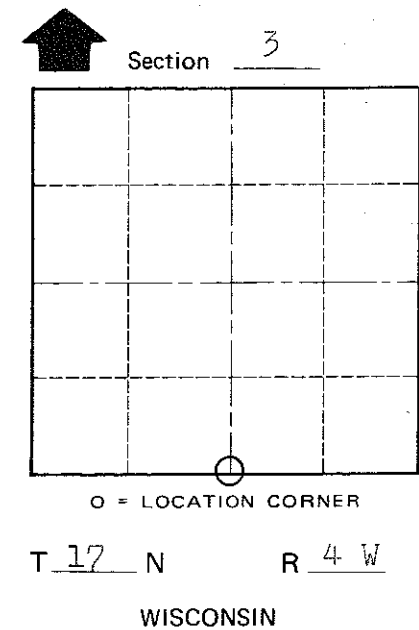
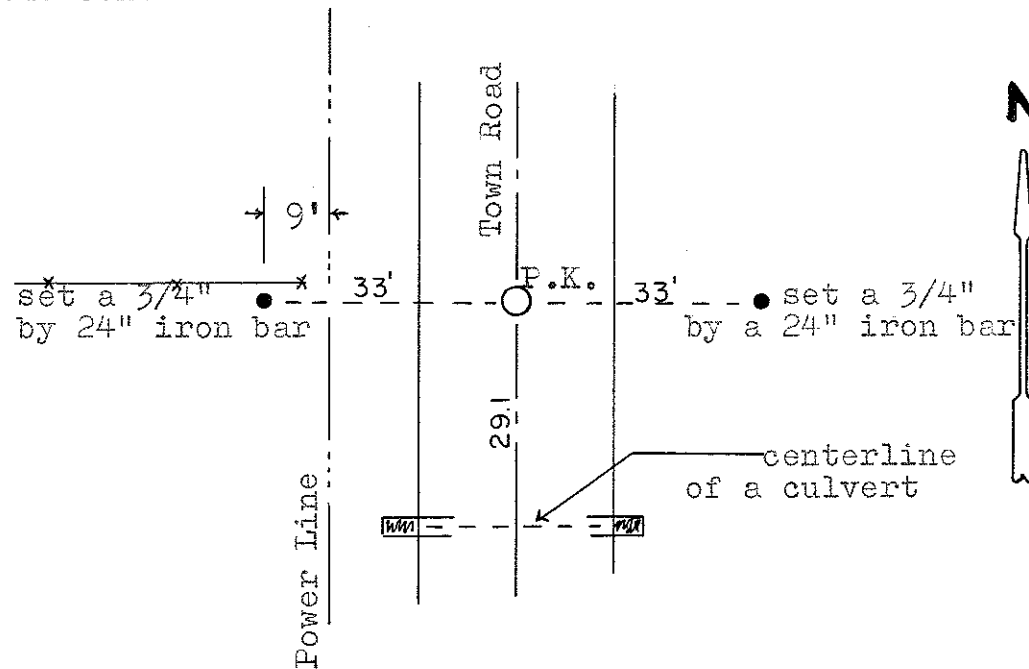
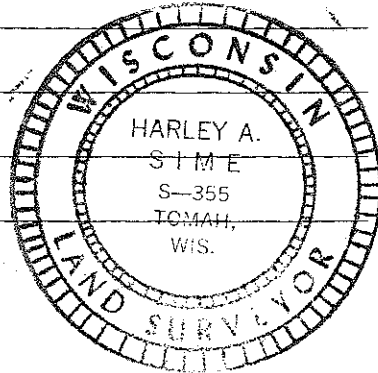
COUNTY SURVEYOR FORM NO. 1

Description of corner and witness monuments, references and accessories used to perpetuate the original or re-established location of this corner:
Set a P.K. nail in a chipped hole in the centerline of a town road.

Witnesses to corner location:

W. C. Jung - Crew Chief *W.C. Jung*

G. Sime



SURVEY CONTROL ORDER

Horizontal _____
Vertical _____

WISCONSIN COORDINATE SYSTEM

| Corner | East (X) | North (Y) | Elevation (Z) | Zone |
|-------------------|----------|-----------|---------------|------|
| Control Sta. Name | | | | |

City, Village or Town Sparta

County of Monroe