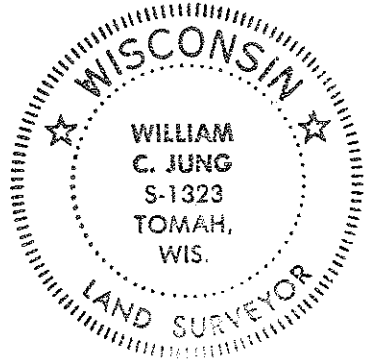


CERTIFICATE

CERTIFIED LAND CORNER

No. 25

21704030000



I, Harley A. Sime, do hereby certify that on the 6 day of May 1975, I found ~~(evidence)~~ (no evidence) of the N.E. corner of Section 10, T17 N, R 4W, Fourth Principal Meridian, and I re-established said corner according to the Wisconsin Statutes as shown and described hereon.

Dated this 14 day of Jan. 1976

Harley A. Sime
County Surveyor
Title

History of original corner establishment:

Description of corner evidence found:

Set corner by double proportionate measurement.

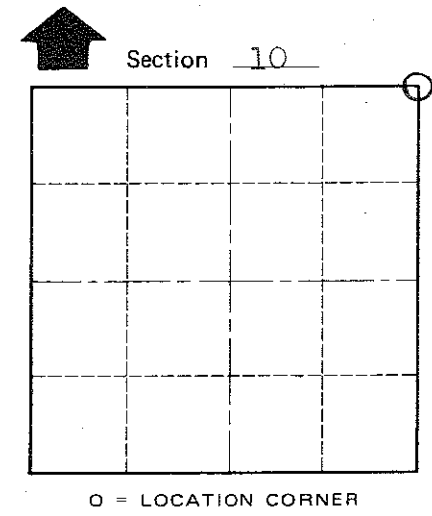
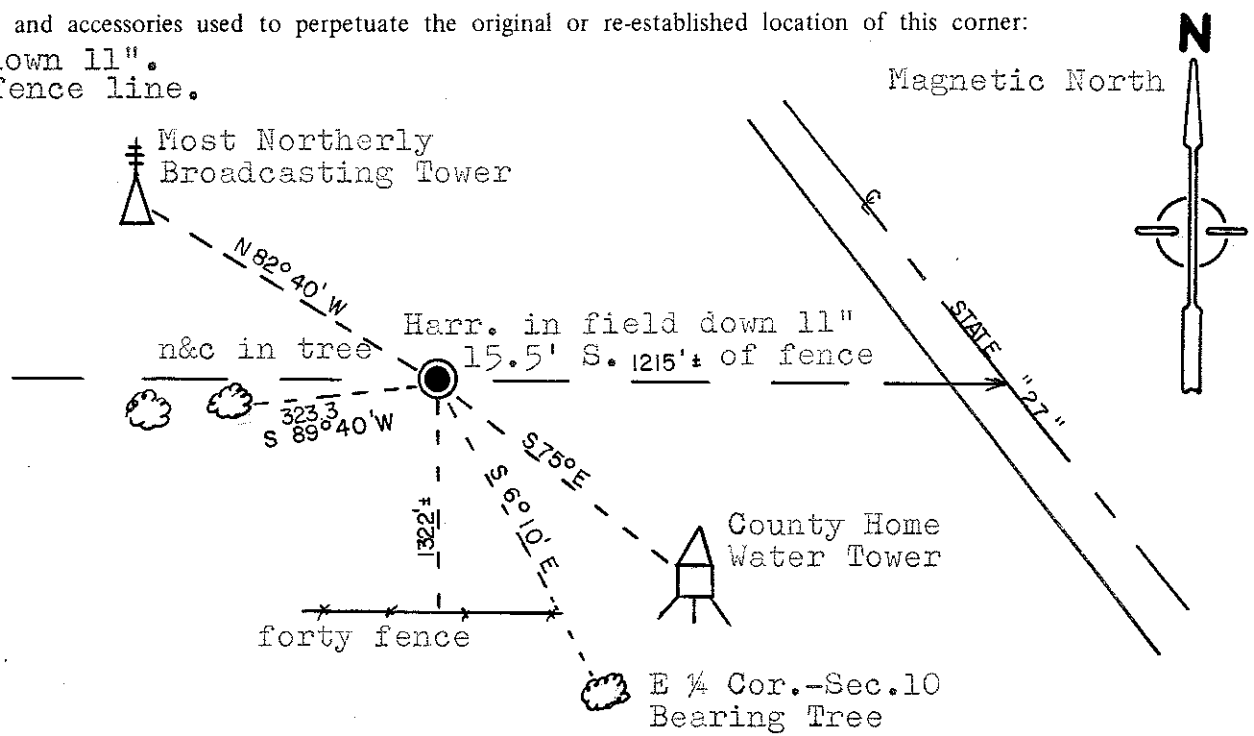
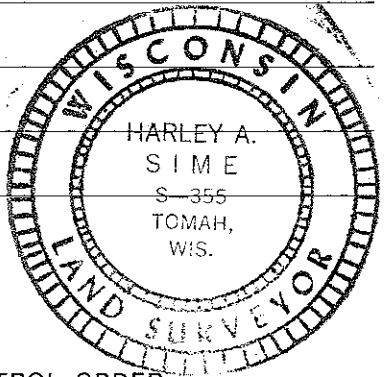
COUNTY SURVEYOR FORM NO. 1

Description of corner and witness monuments, references and accessories used to perpetuate the original or re-established location of this corner:

Set Harrison in open hay field, down 11".
Corner is 15.5 ft. South of old fence line.

Witnesses to corner location:

W.C. Jung - Crew Chief W.C. Jung
A. Lueck



T 17 N R 4W
WISCONSIN

SURVEY CONTROL ORDER

Horizontal _____
Vertical _____

WISCONSIN COORDINATE SYSTEM

Corner	East (X)	North (Y)	Elevation (Z)	Zone
Control Sta. Name				

City, Village or Town Sparta

County of Monroe