

CERTIFICATE

CERTIFIED LAND CORNER

No. 19

21704022000

I, Harley A. Sime, do hereby certify that on the 9 day of April 1975, I found (evidence) (~~no evidence~~) of the W 1/4 corner of Section 1, T17 N, R 4W, Fourth Principal Meridian, and I re-established said corner according to the Wisconsin Statutes as shown and described hereon.

History of original corner establishment:

Description of corner evidence found:

Dated this 14 day of Jan. 1976.

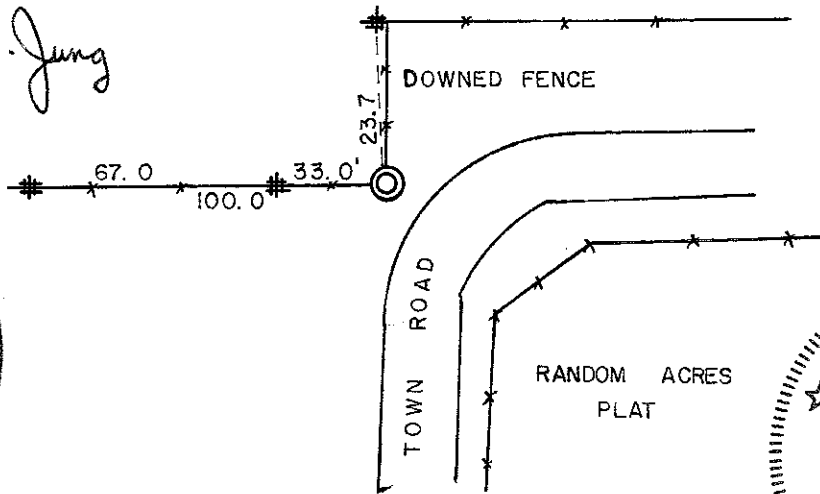
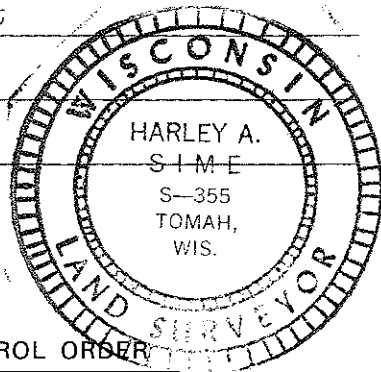
Found a 1 1/4" x 30" iron bar in the fence intersection. The corner was on record. Removed the iron bar and replaced it with a Harrison marker.

Harley A. Sime
County Surveyor
Title

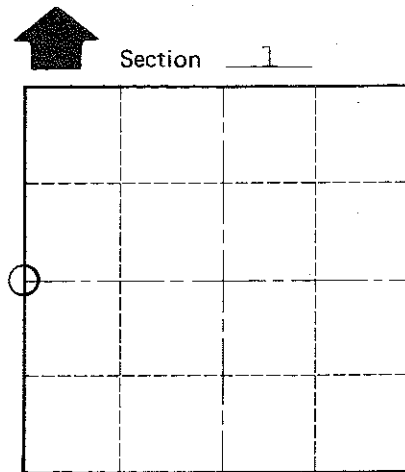
Description of corner and witness monuments, references and accessories used to perpetuate the original or re-established location of this corner:
Set a Harrison marker up 2".

Witnesses to corner location:

W.C. Jung - Crew Chief W.C. Jung
G. Sime
D. Malliet

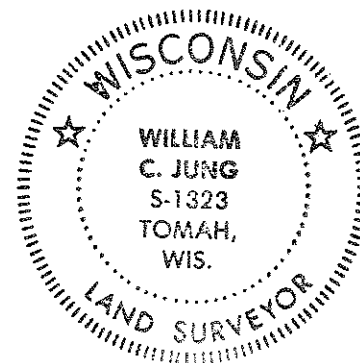


⦿ = 3/4" Iron Bar



O = LOCATION CORNER

T 17 N R 4W
WISCONSIN



SURVEY CONTROL ORDER

Horizontal	_____
Vertical	_____

WISCONSIN COORDINATE SYSTEM

Corner	East (X)	North (Y)	Elevation (Z)	Zone
Control Sta. Name				

City, Village or Town Sparta

County of Monroe

COUNTY SURVEYOR FORM NO. 1