

23

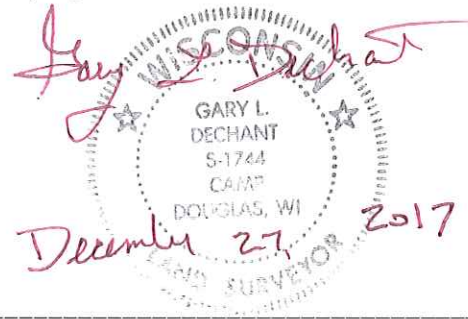
**U.S. PUBLIC LAND CORNER
MAINTENANCE**

**Corner ID : SE Sec. 2, T17N-R4W
21704020000**

<u>DATE</u>	<u>CREW</u>	<u>MONUMENT TYPE</u> -----
December 1, 2017	Zachariah P.Dechant Gary L. Dechant	Monument of record destroyed during road construction. Reset from one existing tie set by B. Meyer in 1992 and from previous surveys. Set mason nail at corner in center line CTH "B".

References:

	<u>Bearing</u>	<u>Distance</u>
1) Set 3/4"x24" round iron bar, down 10", 33' north of power pole	N55°33'22"E	51.36'
2) Set 3/4"x24" round iron bar, down 10", 4' north of power pole	N89°52'37"E	43.11'
3) Set 3/4"x24" round iron bar, down 6", on south edge of field entrance	S55°33'22"W	61.98'
4) Existing 3/4" round iron bar, down 6", set survey sign 1' south	S89°52'37"W	39.76' (39.76')



I, Harley A. Sime, do hereby certify that on the 11 day of July, 19 75, I found (evidence) ~~no evidence~~ of the S.W. corner of Section 1, T 17 N, R 4 W, Fourth Principal Meridian, and I re-established said corner according to the Wisconsin Statutes as shown and described hereon.

Dated this 14 day of Jan., 19 76.

Harley A. Sime
County Surveyor
Title

History of original corner establishment:

Description of corner evidence found:

Found a 3/4"x24" iron bar used in previous surveys. Removed and replaced it with a Harrison marker.

UPDATE: Early in 1991, then Highway Commissioner George Baker informed the County Surveyor's Office that C.T.H. "B" was to be improved later in 1991. New ties were taken for the existing Harrison marker. The Harrison was then removed. Following construction, the corner location was re-established. A hole was drilled and a 1 1/4"x30" round iron bar set.

See Reverse Side
For Maintenance

Bryan H. Meyer, Deputy County Surveyor 1/3/92

Description of corner and witness monuments, references and accessories used to perpetuate the original or re-established location of this corner:

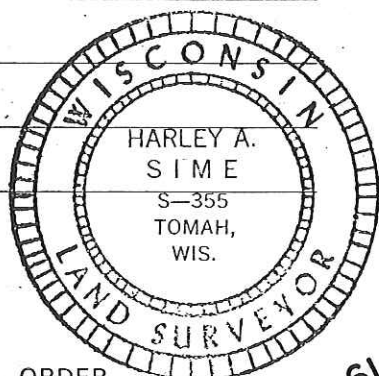
Set a Harrison in the road, down 2".

UPDATE: Set a 1 1/4"x30" round iron bar in new hot-mix road.

Witnesses to corner location:

W.C. Jung - Crew Chief

G. Dechant



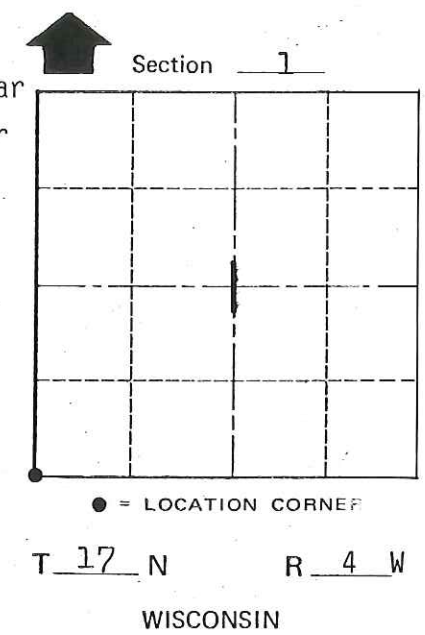
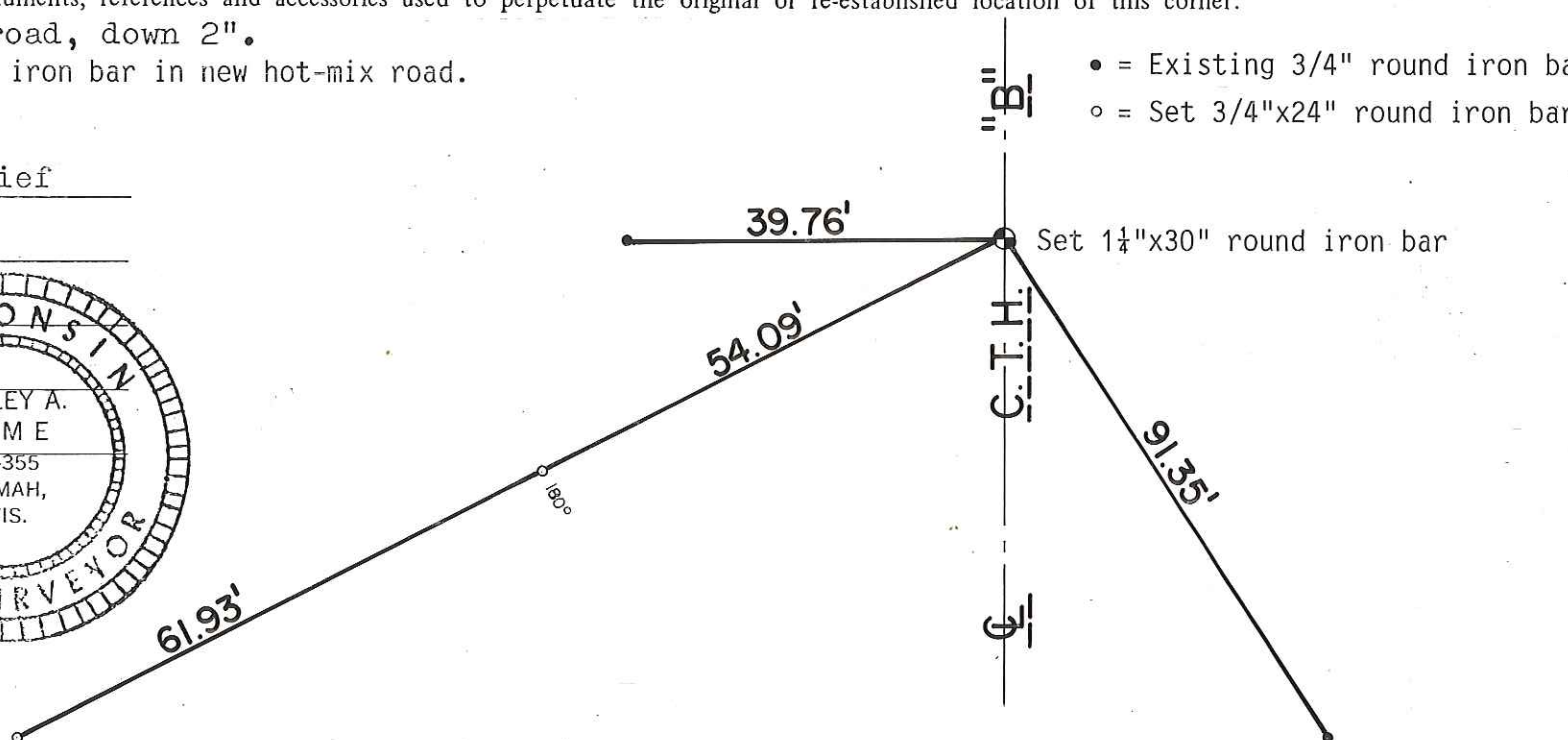
SURVEY CONTROL ORDER

Horizontal _____
Vertical _____

WISCONSIN COORDINATE SYSTEM

Corner	East (X)	North (Y)	Elevation (Z)	Zone
Control Sta. Name				

- = Existing 3/4" round iron bar
- = Set 3/4"x24" round iron bar



~~City, Village or Town~~ Sparta
County of Monroe

COUNTY SURVEYOR FORM NO. 1

I, Harley A. Sime, do hereby certify that on the 11 day of July 19 75, I found (evidence) ~~(no evidence)~~ of the S.W. corner of Section 1, T 17 N, R 4W, Fourth Principal Meridian, and I re-established said corner according to the Wisconsin Statutes as shown and described hereon.

Dated this 14 day of Jan. 19 76.

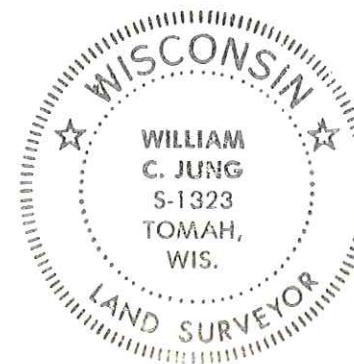
Harley A. Sime
County Surveyor
Title

History of original corner establishment:

Description of corner evidence found:

Found a 3/4"x24" iron bar used in previous surveys. Removed and replaced it with a Harrison marker.

See Reverse Side For Maintenance

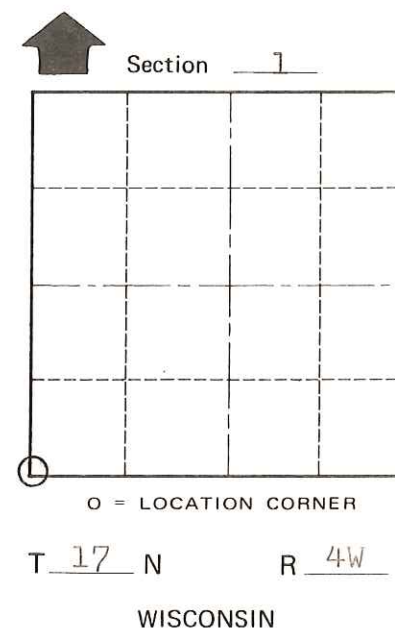
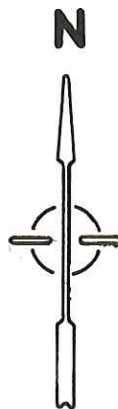
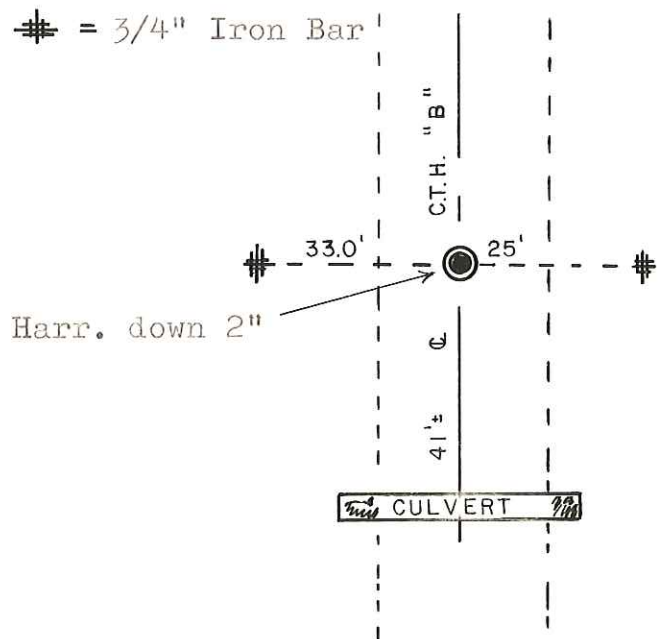
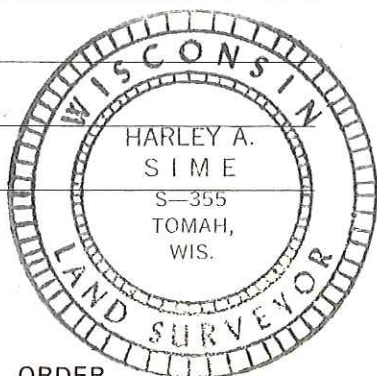


Description of corner and witness monuments, references and accessories used to perpetuate the original or re-established location of this corner:

Set a Harrison in the road, down 2".

Witnesses to corner location:

W.C. Jung - Crew Chief W.C. Jung
G. Dechant



SURVEY CONTROL ORDER

Horizontal _____
Vertical _____

WISCONSIN COORDINATE SYSTEM

Corner	East (X)	North (Y)	Elevation (Z)	Zone
Control Sta. Name				

City, Village or Town Sparta

County of Monroe

COUNTY SURVEYOR FORM NO. 1