

CERTIFICATE

CERTIFIED LAND CORNER

No. 20

**21704012000**

I, Harley A. Sime, do hereby certify that on the 12 day of February 19 76, I found ~~(evidence)~~ (no evidence) of the E 1/4 corner of Section 1, T 17 N, R 4W, Fourth Principal Meridian, and I re-established said corner according to the Wisconsin Statutes as shown and described hereon.

Dated this 5 day of March 19 76.

*Harley A. Sime*

County Surveyor

Title

History of original corner establishment:

County Surveyor Fred Holden visited this corner 10 May 1910.

Description of corner evidence found:

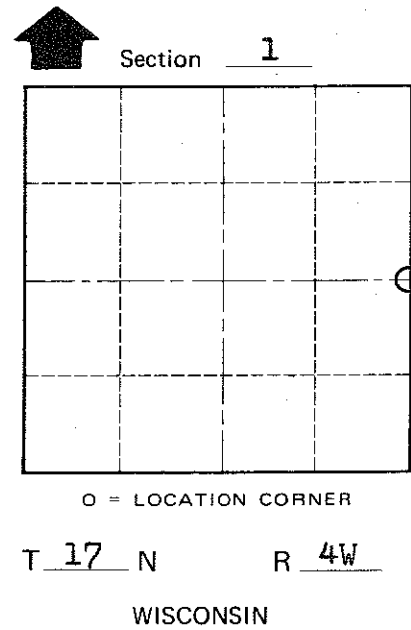
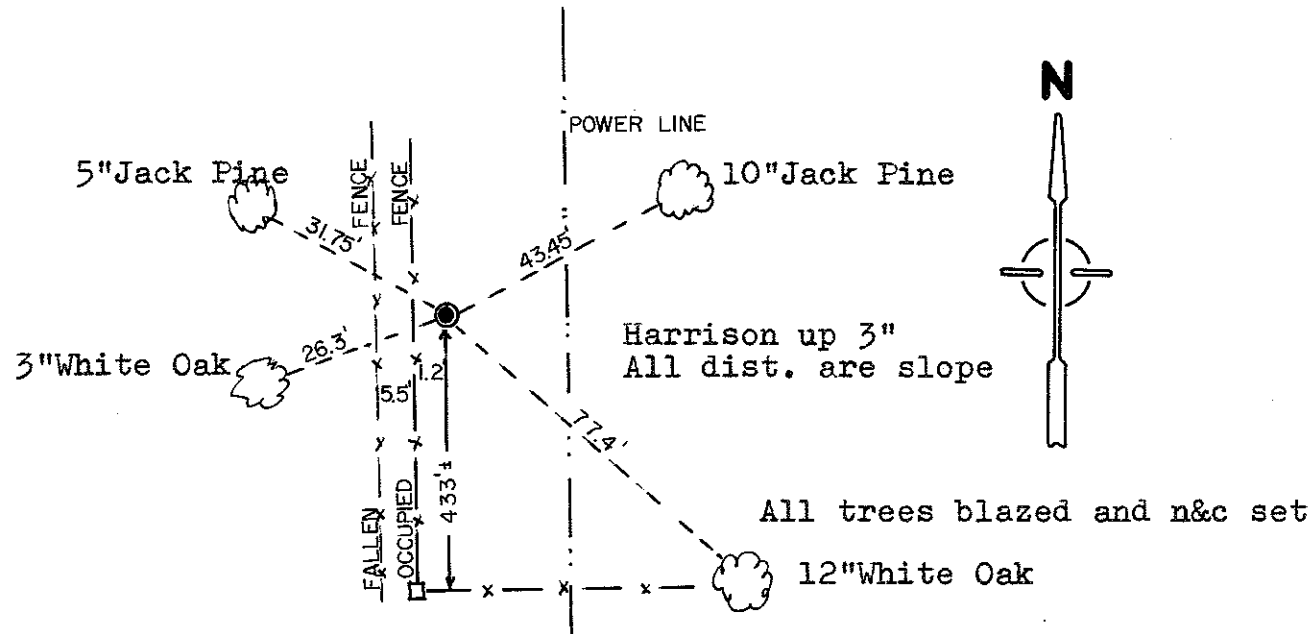
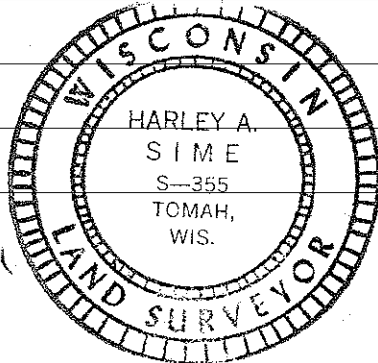
Set the corner on line between the section corners, and at a distance from the E1/16SE equivalent to that distance from the latter forty corner to the SE corner of section. Set as such, this corner fits existing surveys and monuments in Section 1.

Description of corner and witness monuments, references and accessories used to perpetuate the original or re-established location of this corner:

Witnesses to corner location:

*Douglas J. Malliet*  
D.J. Malliet - Reg. Surveyor

A. Lueck



COUNTY SURVEYOR FORM NO. 1

SURVEY CONTROL ORDER

Horizontal	_____
Vertical	_____

WISCONSIN COORDINATE SYSTEM

Corner	East (X)	North (Y)	Elevation (Z)	Zone
Control Sta. Name				

City, Village or Town Sparta

County of Monroe