

# 22

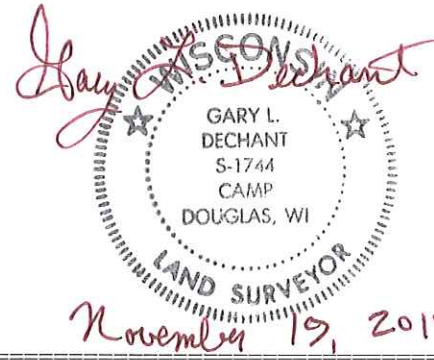
**U.S. PUBLIC LAND CORNER  
MAINTENANCE**

**Corner ID : S1/4 Sec. 1, T17N-R4W  
21704010020**

<u>DATE</u>	<u>CREW</u>	<u>MONUMENT TYPE -----</u>
November 9, 2017	Zachariah P. Dechant Gary L. Dechant	Existing Harrison intact. Set survey sign 1' North.

References:

	<u>Bearing</u>	<u>Distance</u>
1) Set 3/4"x24" round iron bar, down 4", SW of small bank, 6' NW of 30" Black Oak	N21E	19.40'
2) Set 3/4"x24" round iron bar, down 4"	S46E	28.20'
3) Set 3/4"x24" round iron bar, down 4", 4' NW of 5" White Pine	S63W	22.02'
4) Set 3/4"x24" round iron bar, down 4", 4" SE of 12" Cherry	N51W	19.62'



I, Harley A. Sime, do hereby certify that on the 14 day of April 1975, I found (evidence) ~~(no evidence)~~ of the S 1/4 corner of Section 1, T 17 N, R 4W, Fourth Principal Meridian, and I re-established said corner according to the Wisconsin Statutes as shown and described hereon.

Dated this 14 day of Jan. 1976.

Harley A. Sime  
County Surveyor  
Title

History of original corner establishment:

**See Reverse Side  
For Maintenance**

Description of corner evidence found:

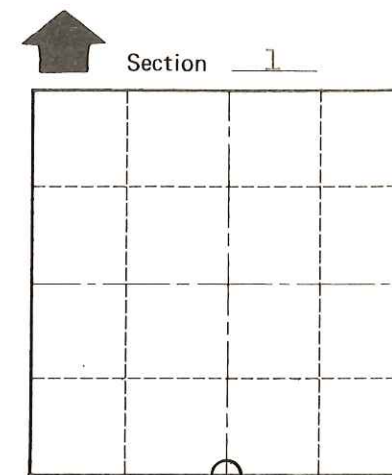
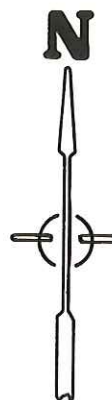
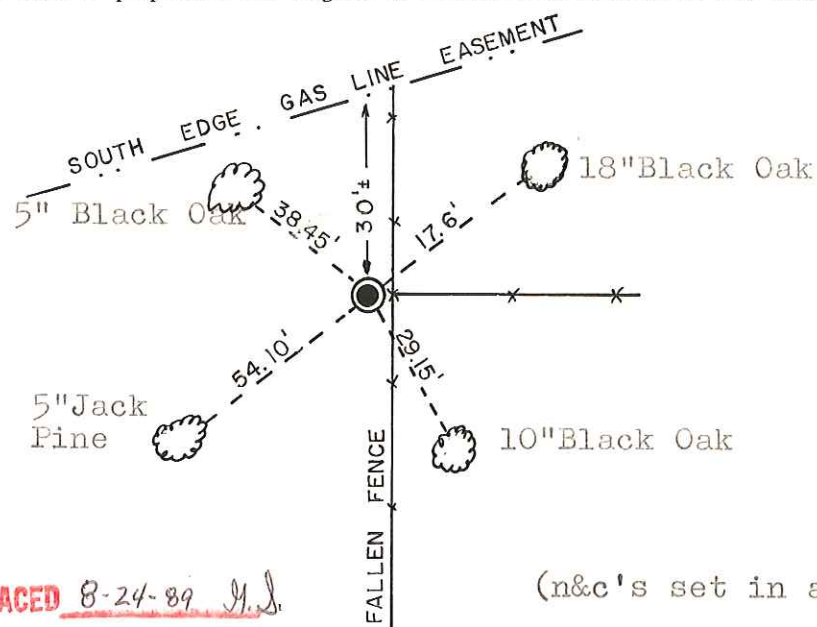
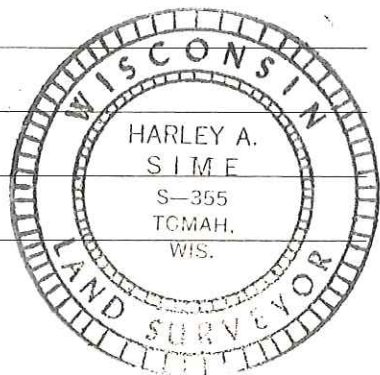
Found an iron bar used in previous surveys at the fence corner. Removed and replaced it with a Harrison marker.

Description of corner and witness monuments, references and accessories used to perpetuate the original or re-established location of this corner:

Set Harrison by fence corner.

Witnesses to corner location:

Douglas G. Mallett  
D. Mallett - Crew Chief  
G. Sime



O = LOCATION CORNER  
T 17 N R 4W  
WISCONSIN

**SIGN PLACED** 8-24-89 M.S.

(n&c's set in all trees)

SURVEY CONTROL ORDER

Horizontal	_____
Vertical	_____

WISCONSIN COORDINATE SYSTEM

Corner	East (X)	North (Y)	Elevation (Z)	Zone
Control Sta. Name				

City, Village or Town Sparta

County of Monroe

COUNTY SURVEYOR FORM NO. 1