

NOTES

NOTES

NOTES

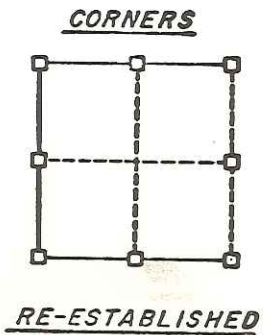
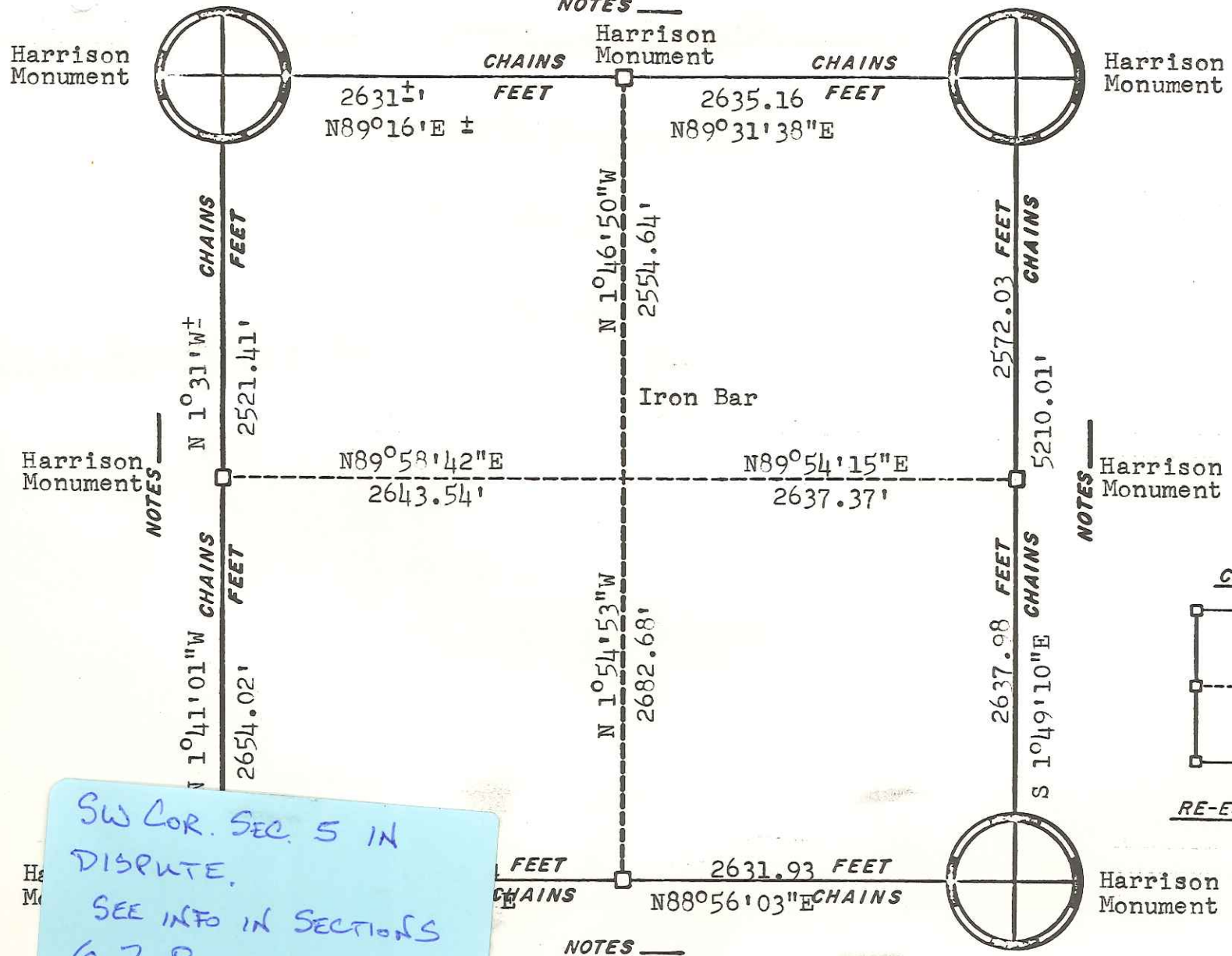
NOTES

ORIGINAL SURVEY DATA

BY _____
DATE 3/13/81

SURVEYED BY	CONTRACT DATE	COUNTY MONROE	TOWN-VILLAGE-CITY	SECTION	TOWNSHIP	RANGE
W. C. Jung	May 1980	██████████	Angelo	4	T17N	R3W

NOTES

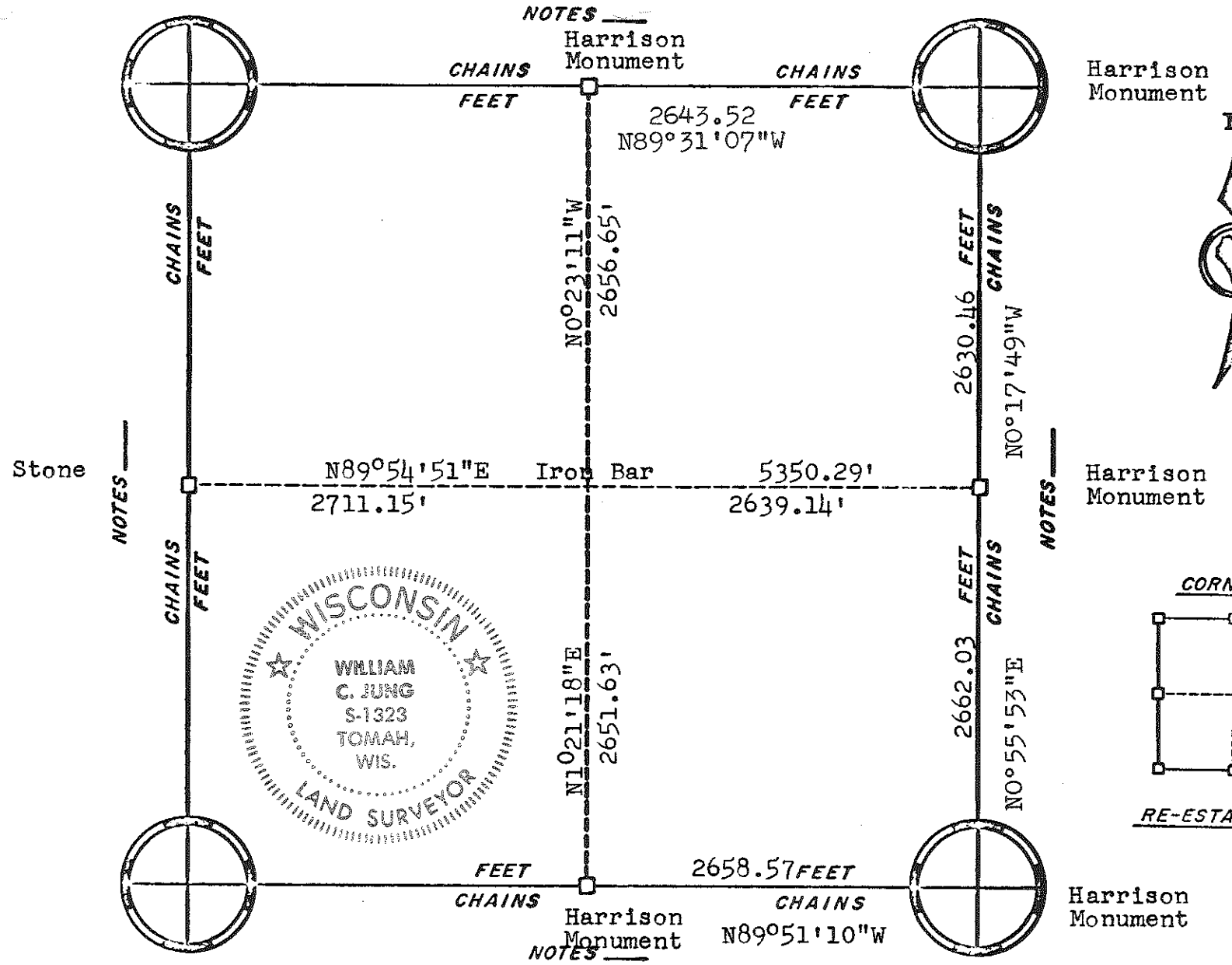


SW COR. SEC. 5 IN DISPUTE.
SEE INFO IN SECTIONS 6, 7, 8.
CALL COUNTY SURVEYOR FOR MORE INFO.

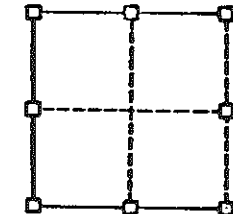
ORIGINAL SURVEY DATA

BY _____
DATE 3/13/81

STATE	COUNTY	MONROE	TOWN-VILLAGE-CITY	SECTION	TOWNSHIP	RANGE
			Angelo	5	T17N	R3W



CORNERS



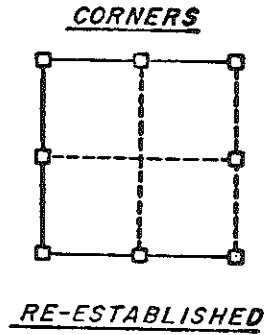
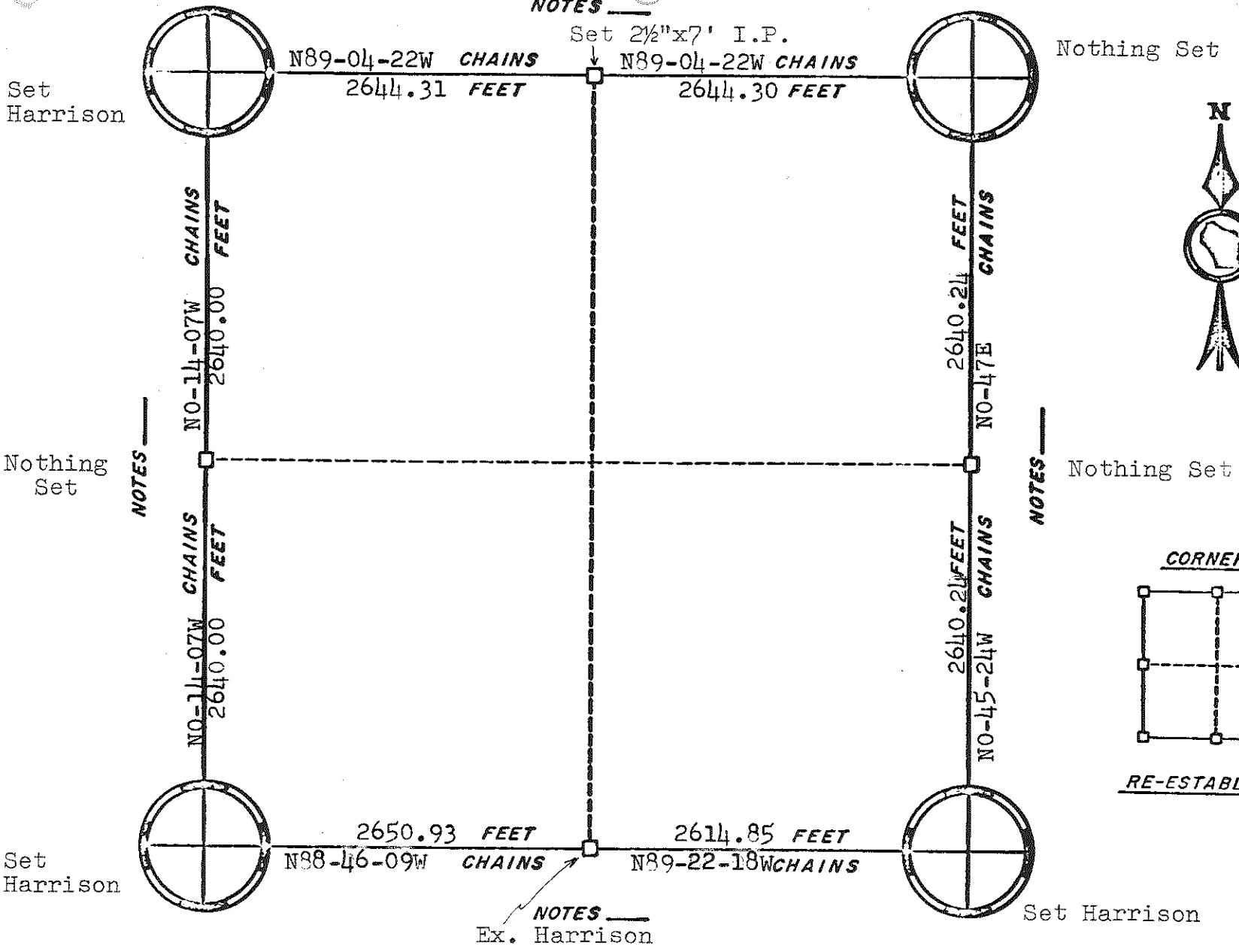
RE-ESTABLISHED

ORIGINAL SURVEY DATA

BY _____
DATE 5/21/79

SURVEYED BY	CONTRACT DATE	COUNTY MONROE	TOWN-VILLAGE-CITY	SECTION	TOWNSHIP	RANGE
W. C. Jung	June 1978	██████████	Angelo	19	17N	3W

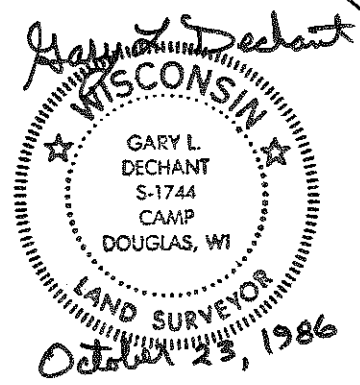
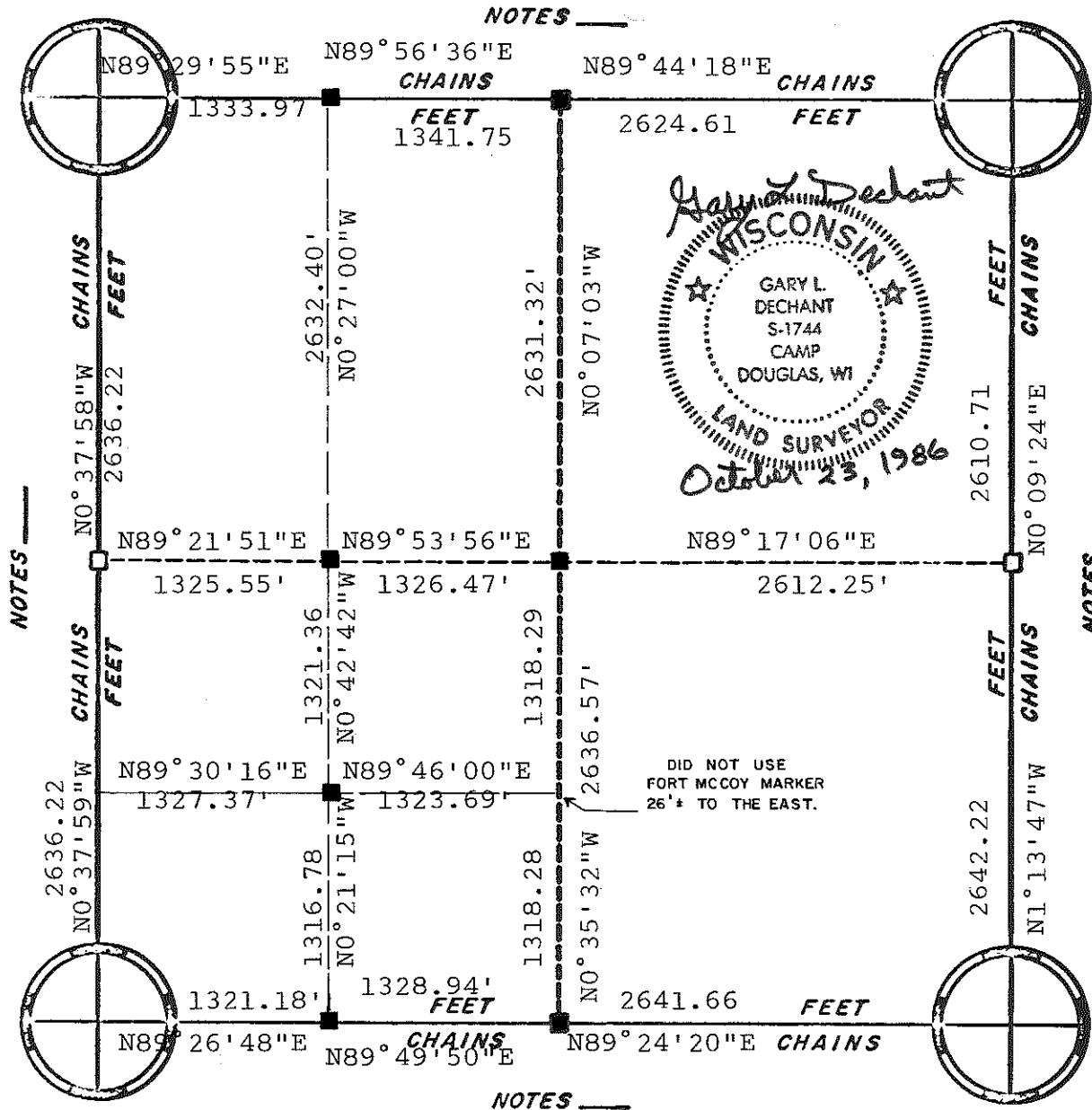
NOTES _____



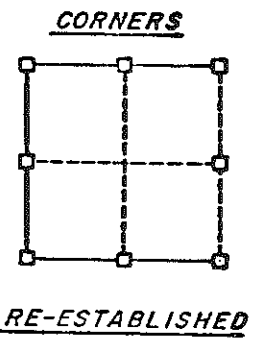
ORIGINAL SURVEY DATA

BY _____
DATE _____

SURVEYED BY	CONTRACT DATE	COUNTY MONROE	TOWN-VILLAGE-CITY	SECTION	TOWNSHIP	RANGE
	Sept. 1980		Angelo	24	17N	3W



■ = Concrete marker with brass cap (Fort McCoy marker)

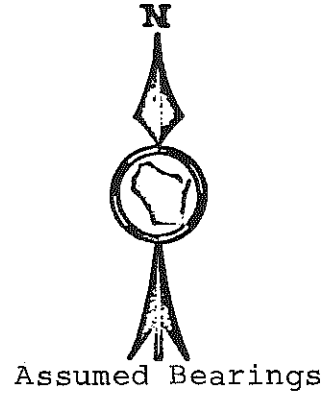
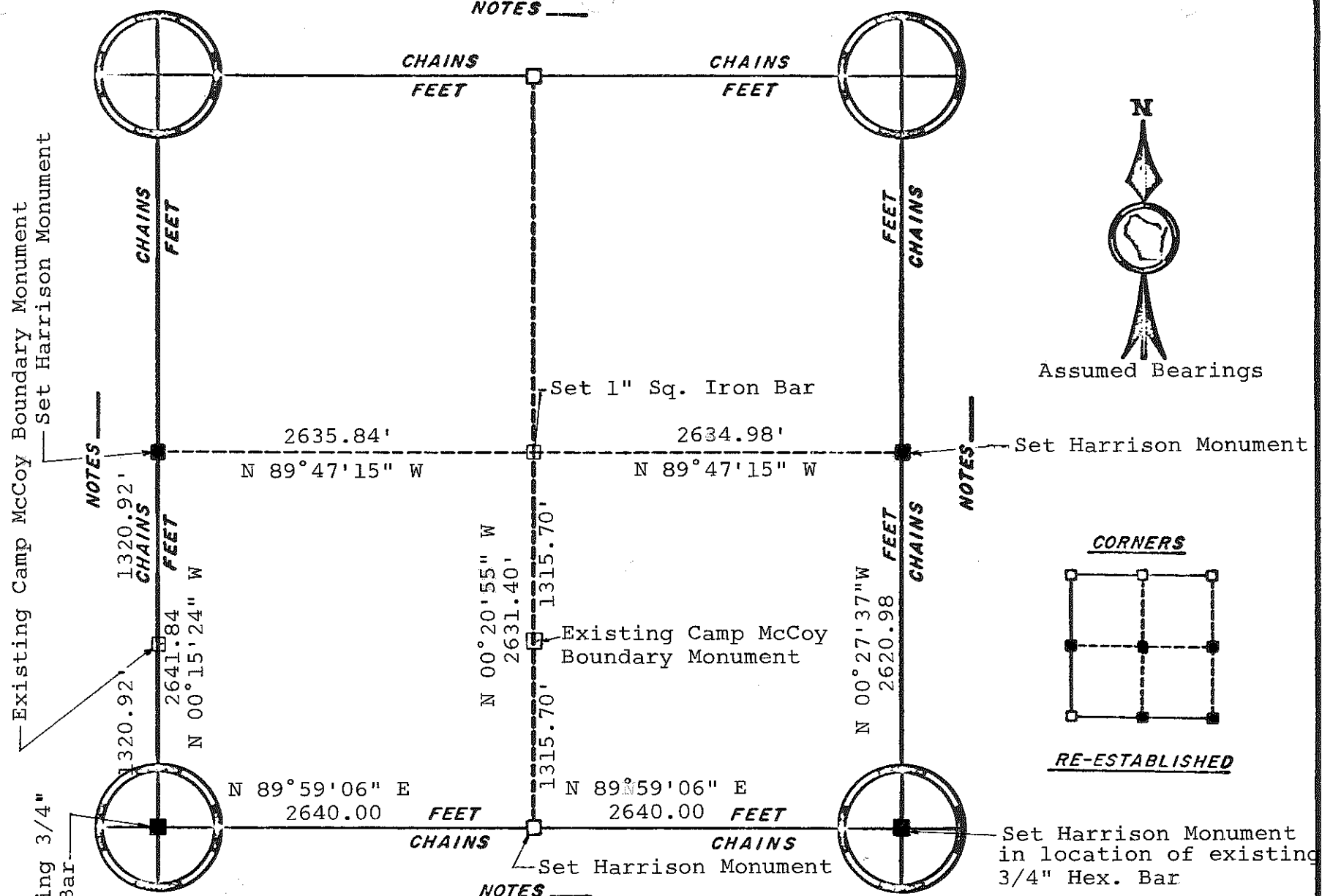


ORIGINAL SURVEY DATA

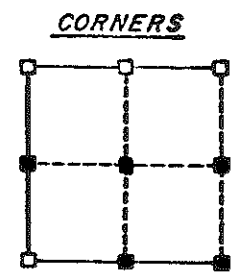
BY _____
DATE _____

SURVEYED BY G.L. Dechant	CONTRACT DATE Oct. 23, 1986	COUNTY MONROE ██████████	TOWN-VILLAGE-CITY Angelo	SECTION 29	TOWNSHIP 17N	RANGE 3W
-----------------------------	--------------------------------	-----------------------------	-----------------------------	---------------	-----------------	-------------

NOTES



Assumed Bearings



RE-ESTABLISHED

ORIGINAL SURVEY DATA

BY [Redacted] DATE October 22, 1979

SURVEYED BY Heidecke Feddersen	CONTRACT DATE October 22, 1979	COUNTY MONROE	TOWN-VILLAGE-CITY Angelo	SECTION 34	TOWNSHIP 17 N	RANGE 3 W
--------------------------------------	-----------------------------------	---------------	-----------------------------	---------------	------------------	--------------