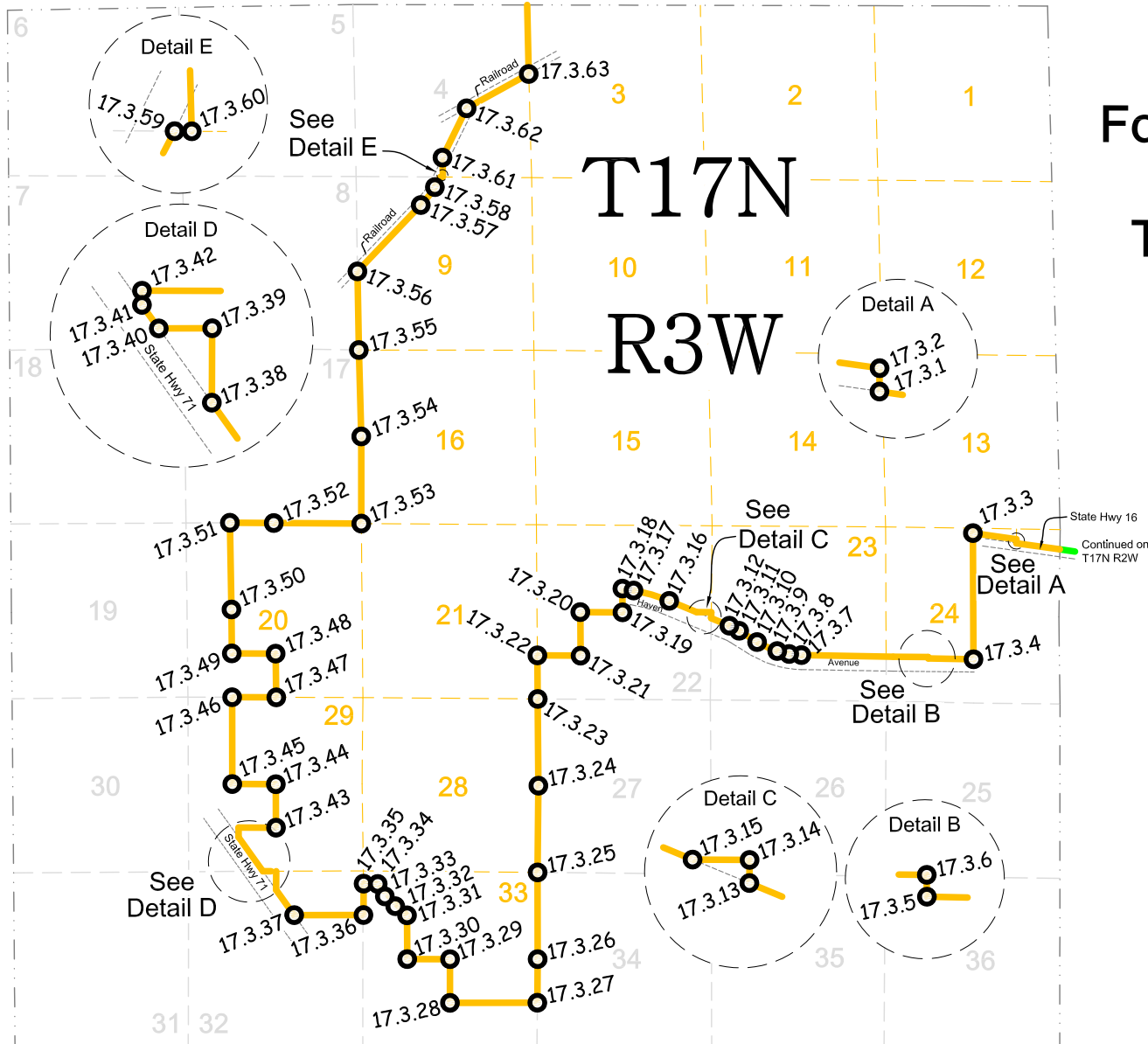


2013 Fort McCoy boundary monuments of Township 17 North, Range 3 West Angelo



LEGEND

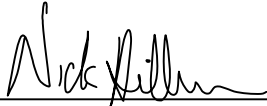
- Boundary monument
- 17.3.X "X" Denotes proceeding page number



CERTIFICATE

I, Nicholas M. Hillmer, do hereby certify that this document and the data contained herein was prepared by me or under my direct supervision and that I am a duly Licensed Land Surveyor under the laws of the State of Wisconsin.

Dated this 23rd day of May, 2013



Nicholas M. Hillmer, P.L.S. 2909
Anderson Engineering of Minnesota, LLC.

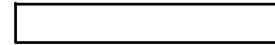
CERTIFIED LAND CORNER

History of corner established since Original Government Survey

No known history of this corner was found.

Description of evidence found

On May 20th, 2013, Anderson Engineering of Minnesota set a 30 inch Berntsen aluminum dig monument with a 3 1/4 inch aluminum cap, stamped "FORT MCCOY BOUNDARY" "2013" "ANDERSON ENG OF MN." The monument is set at the intersection of the north right-of-way of County Highway Number 16 and the east 1/16 line of Section 24.

No. _____


Description of corner and witness monuments, references and accessories used to perpetuate the original or re-established location of this corner:

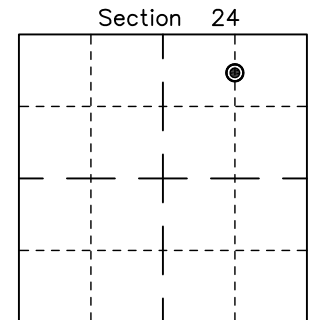
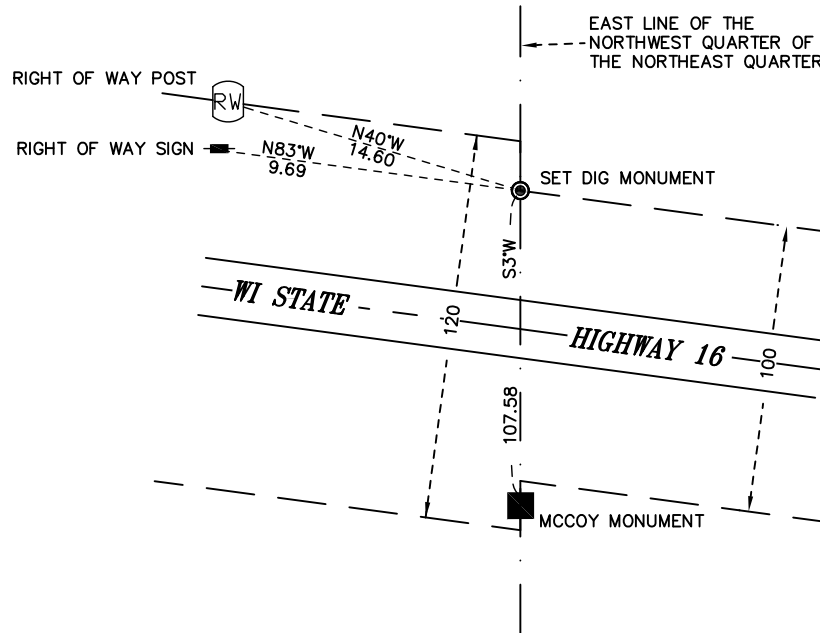
Witnesses to corner location:

Nick Hillmer
Josh Oslund
Dan Greenwald

MONROE COUNTY
 COORDINATE SYSTEM
 NAD 1983 (2007)

MCCOY DIG MONUMENT
 Northing (Y) 378517.88
 Easting (X) 662248.11

Base Station - 22 182W
 Northing (Y) 408053.25
 Easting (X) 679287.00



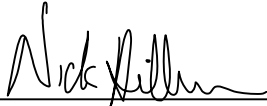
● = LOCATION CORNER
 Corner I.D. N ROW HWY
16 & E 1/16 LINE
 T 17 N R 3 W
 Town of Angelo
 Monroe County, WI.

All distances are shown in U.S. Survey Feet.
 Bearings are for tie reference purposes only.
 Coordinates were derived from RTK GNSS procedures.

CERTIFICATE

I, Nicholas M. Hillmer, do hereby certify that this document and the data contained herein was prepared by me or under my direct supervision and that I am a duly Licensed Land Surveyor under the laws of the State of Wisconsin.

Dated this 23rd day of May, 2013



Nicholas M. Hillmer, P.L.S. 2909
Anderson Engineering of Minnesota, LLC.


CERTIFIED LAND CORNER

History of corner established since Original Government Survey

The 1940's McCoy boundary notes show a corner at this location.

Description of evidence found

No evidence of the McCoy monument was found. On May 20th, 2013, Anderson Engineering of Minnesota set a 3/4 inch aluminum drive monument with a 3 1/4 inch aluminum cap, stamped "FORT MCCOY BOUNDARY" "2013" "ANDERSON ENG. OF MN." The monument was set at the intersection of a line 126 feet north of and parallel with the centerline of County Highway Number 16 and the east line of the Northwest Quarter of the Northeast Quarter.

No. _____


Description of corner and witness monuments, references and accessories used to perpetuate the original or re-established location of this corner:

Witnesses to corner location:

Nick Hillmer
Josh Oslund
Dan Greenwald

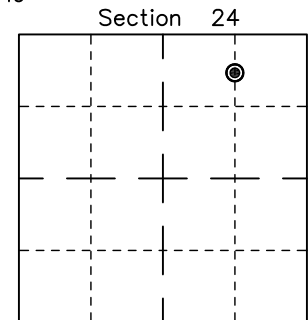
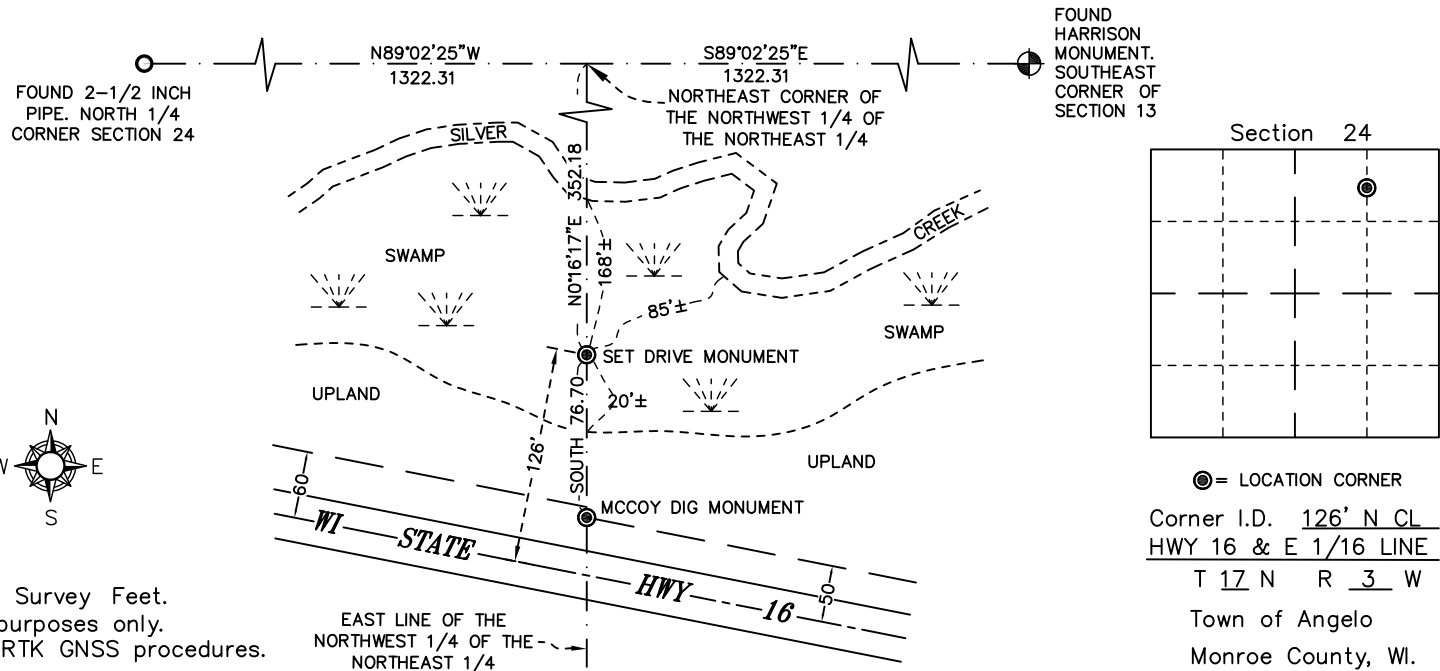
MONROE COUNTY
 COORDINATE SYSTEM
 NAD 1983 (2007)

MCCOY DRIVE MONUMENT
 Northing (Y) 378594.58
 Easting (X) 662248.47

Base Station - 22 182W
 Northing (Y) 408053.25
 Easting (X) 679287.00



All distances are shown in U.S. Survey Feet.
 Bearings are for tie reference purposes only.
 Coordinates were derived from RTK GNSS procedures.

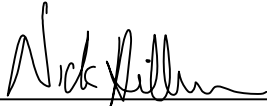


● = LOCATION CORNER
 Corner I.D. 126' N CL
HWY 16 & E 1/16 LINE
T 17 N R 3 W
 Town of Angelo
 Monroe County, WI.

CERTIFICATE

I, Nicholas M. Hillmer, do hereby certify that this document and the data contained herein was prepared by me or under my direct supervision and that I am a duly Licensed Land Surveyor under the laws of the State of Wisconsin.

Dated this 23rd day of May, 2013



Nicholas M. Hillmer, P.L.S. 2909
Anderson Engineering of Minnesota, LLC.

CERTIFIED LAND CORNER

History of corner established since Original Government Survey

The 1940's McCoy boundary notes show a corner at this location.

Description of evidence found

On October 31st, 2012, Anderson Engineering of Minnesota located the McCoy monument, a 4 inch U.S. Army Corps of Engineers survey control mark disk set in concrete. The monument was not accepted as the corner. On May 6th, 2013, Anderson Engineering of Minnesota set a 30 inch Berntsen aluminum dig monument with a 3 1/4 inch aluminum cap, stamped "FORT MCCOY BOUNDARY SURVEY" "2013" "ANDERSON ENG. OF MN." The monument is set at the intersection of the north-south quarter line of Section 24 and a line 126 feet north of and parallel with the centerline of County Highway Number 16.

No. _____

Description of corner and witness monuments, references and accessories used to perpetuate the original or re-established location of this corner:

Witnesses to corner location:

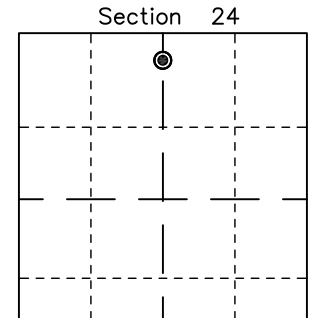
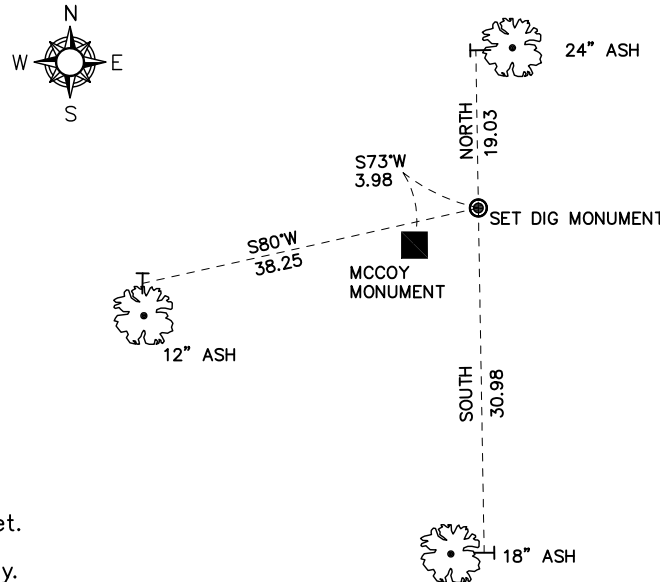
Nick Hillmer
Josh Oslund
Dan Greenwald

MONROE COUNTY
 COORDINATE SYSTEM
NAD 1983 (2007)

MCCOY DIG MONUMENT
 Northing (Y) 378780.76
 Easting (X) 660928.92

Base Station - 22 182W
 Northing (Y) 408053.25
 Easting (X) 679287.00

All distances are shown in U.S. Survey Feet.
 Ties are to 60D nails set in trees.
 Bearings are for tie reference purposes only.
 Coordinates were derived from RTK GNSS procedures.

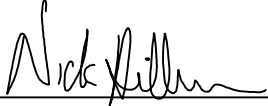


● = LOCATION CORNER
 Corner I.D. 126' N CL
HWY 16 & N-S 1/4 LINE
 T 17 N R 3 W
 Town of Angelo
 Monroe County, WI.

CERTIFICATE

I, Nicholas M. Hillmer, do hereby certify that this document and the data contained herein was prepared by me or under my direct supervision and that I am a duly Licensed Land Surveyor under the laws of the State of Wisconsin.

Dated this 23rd day of May, 2013



Nicholas M. Hillmer, P.L.S. 2909
Anderson Engineering of Minnesota, LLC.

CERTIFIED LAND CORNER

History of corner established since Original Government Survey

The 1940's McCoy boundary notes show a corner on the north right-of-way line of County Road A (Old Highway 16).

Description of evidence found

On March 13, 2013, Anderson Engineering of Minnesota found concrete remains of a McCoy monument on the north right-of-way line of County Road A (Old Highway 16). On May 7, 2013, Anderson Engineering of Minnesota set a 30 inch Berntsen aluminum dig monument with a 3 1/4 inch aluminum cap, stamped "FORT MCCOY BOUNDARY" "2013" "ANDERSON ENG. OF MN" midway online between the south quarter corner and the center of Section 24.

No. _____
21703241020

Description of corner and witness monuments, references and accessories used to perpetuate the original or re-established location of this corner:

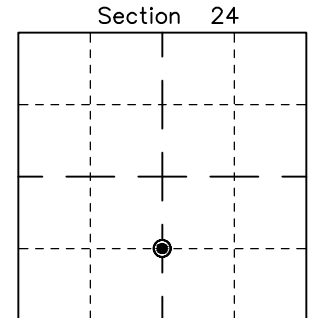
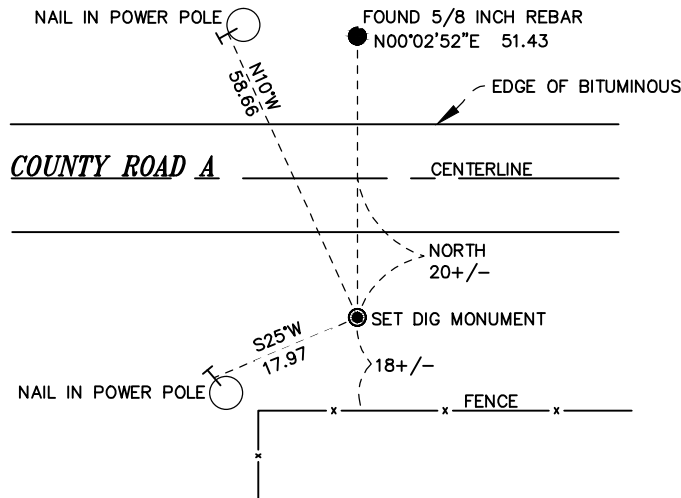
Witnesses to corner location:

Nick Hillmer
Josh Oslund
Dan Greenwald

MONROE COUNTY
COORDINATE SYSTEM
NAD 1983 (2007)

MCCOY DIG MONUMENT
Northing (Y) 375001.70
Easting (X) 660947.25

Base Station - 22 182W
Northing (Y) 408053.25
Easting (X) 679287.00



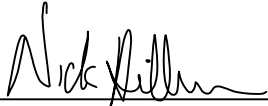
● = LOCATION CORNER
Corner I.D. CS 1/16 24
T 17 N R 3 W
Town of Angelo
Monroe County, WI.

All distances are shown in U.S. Survey Feet.
Bearings are for tie reference purposes only.
Coordinates were derived from RTK GNSS procedures.

CERTIFICATE

I, Nicholas M. Hillmer, do hereby certify that this document and the data contained herein was prepared by me or under my direct supervision and that I am a duly Licensed Land Surveyor under the laws of the State of Wisconsin.

Dated this 23rd day of May, 2013



Nicholas M. Hillmer, P.L.S. 2909
Anderson Engineering of Minnesota, LLC.

CERTIFIED LAND CORNER

History of corner established since Original Government Survey

No known history of this corner was found.

No. _____

Description of evidence found

On May 23rd, 2013, Anderson Engineering of Minnesota set a 5/8 inch rebar at the intersection of the south 1/16 line of Section 24 and the east end of Haven Avenue plat.

Description of corner and witness monuments, references and accessories used to perpetuate the original or re-established location of this corner:

Witnesses to corner location:

Nick Hillmer
Josh Oslund
Dan Greenwald

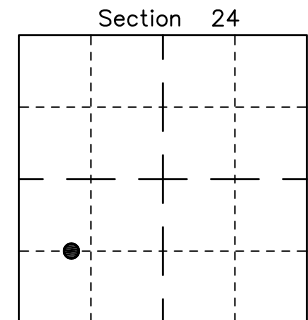
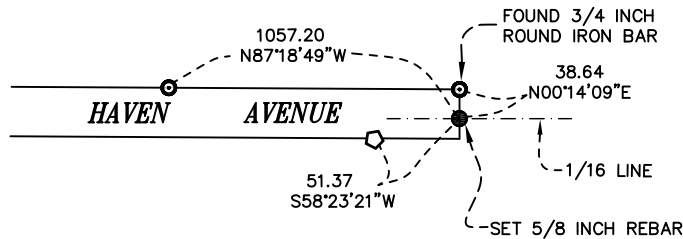


MONROE COUNTY
 COORDINATE SYSTEM
 NAD 1983 (2007)

5/8 INCH REBAR
 Northing (Y) 375028.33
 Easting (X) 659574.15

Base Station – 22 182W
 Northing (Y) 408053.25
 Easting (X) 679287.00

All distances are shown in U.S. Survey Feet.
 Bearings are for tie reference purposes only.
 Coordinates were derived from RTK GNSS procedures.

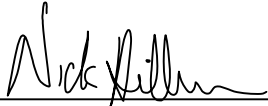


● = LOCATION CORNER
 Corner I.D. EAST END
PLAT & S 1/16 LINE
T 17 N R 3 W
 Town of Angelo
 Monroe County, WI.

CERTIFICATE

I, Nicholas M. Hillmer, do hereby certify that this document and the data contained herein was prepared by me or under my direct supervision and that I am a duly Licensed Land Surveyor under the laws of the State of Wisconsin.

Dated this 23rd day of May, 2013



Nicholas M. Hillmer, P.L.S. 2909
Anderson Engineering of Minnesota, LLC.

CERTIFIED LAND CORNER

History of corner established since Original Government Survey

This corner was set by Bryan Meyer in 1990 while completing a survey for the Monroe County Highway Commissioner of 13th Avenue and Cliff Court now known as Havenwood Road and Haven Avenue respectively. The PLAT OF SURVEY is recorded at the Monroe County Highway Department, reference file number 3982.

Description of evidence found

On August 29, 2012, Anderson Engineering of Minnesota located the 3/4 inch x 24 inch round iron bar at the base of a right-of-way post.

No. _____
[]

Description of corner and witness monuments, references and accessories used to perpetuate the original or re-established location of this corner:

Witnesses to corner location:

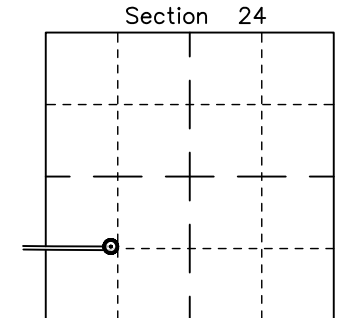
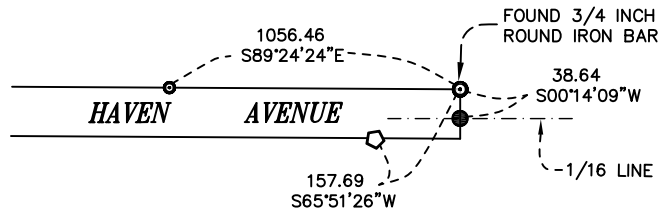
Nick Hillmer
Josh Oslund
Dan Greenwald

MONROE COUNTY
COORDINATE SYSTEM
NAD 1983 (2007)

3/4 INCH x 24 INCH ROUND IRON BAR

Northing (Y) 375066.96
Easting (X) 659574.31

Base Station - 22 182W
Northing (Y) 408053.25
Easting (X) 679287.00



⊙ = LOCATION CORNER
Corner I.D. PLATTED
T 17 N R 3 W
Town of Angelo
Monroe County, WI.

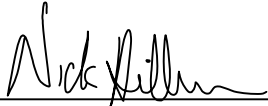
- ⊙ Solid 3/4 inch x 24 inch Round Iron Bar
- Solid 1 1/4 inch 30 inch Round Iron Bar
- ◊ Solid 1 1/4 inch 30 inch Hex Iron Bar

All distances are shown in U.S. Survey Feet.
Bearings are for tie reference purposes only.
Coordinates were derived from RTK GNSS procedures.

CERTIFICATE

I, Nicholas M. Hillmer, do hereby certify that this document and the data contained herein was prepared by me or under my direct supervision and that I am a duly Licensed Land Surveyor under the laws of the State of Wisconsin.

Dated this 23rd day of May, 2013



Nicholas M. Hillmer, P.L.S. 2909
Anderson Engineering of Minnesota, LLC.

CERTIFIED LAND CORNER

History of corner established since Original Government Survey

This corner was set by Bryan Meyer in 1990 while completing a survey for the Monroe County Highway Commissioner of 13th Avenue and Cliff Court now known as Havenwood Road and Haven Avenue respectively. The PLAT OF SURVEY is recorded at the Monroe County Highway Department, reference file number 3982.

Description of evidence found

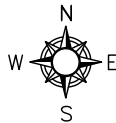
On August 29, 2012, Anderson Engineering of Minnesota located the 3/4 inch x 24 inch round iron bar at the base of a right-of-way post.

No. _____
[]

Description of corner and witness monuments, references and accessories used to perpetuate the original or re-established location of this corner:

Witnesses to corner location:

Nick Hillmer
Josh Oslund
Dan Greenwald



MONROE COUNTY
COORDINATE SYSTEM
NAD 1983 (2007)

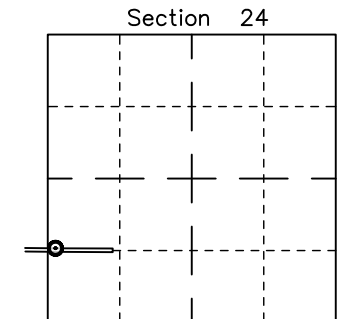
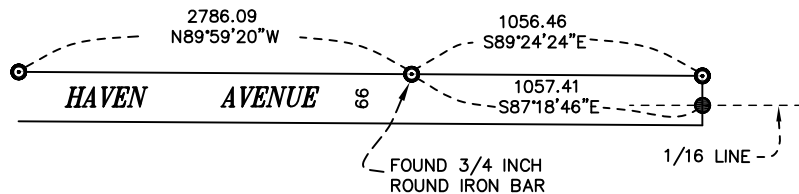
3/4 INCH x 24 INCH ROUND IRON BAR

Northing (Y) 375077.90
Easting (X) 658517.91

Base Station - 22 182W

Northing (Y) 408053.25
Easting (X) 679287.00

All distances are shown in U.S. Survey Feet.
Bearings are for tie reference purposes only.
Coordinates were derived from RTK GNSS procedures.



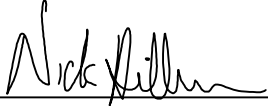
- ⊙ Solid 3/4 inch x 24 inch Round Iron Bar
- Solid 1 1/4 inch 30 inch Round Iron Bar

⊙ = LOCATION CORNER
Corner I.D. PLATTED
T 17 N R 3 W
Town of Angelo
Monroe County, WI.

CERTIFICATE

I, Nicholas M. Hillmer, do hereby certify that this document and the data contained herein was prepared by me or under my direct supervision and that I am a duly Licensed Land Surveyor under the laws of the State of Wisconsin.

Dated this 23rd day of May, 2013



Nicholas M. Hillmer, P.L.S. 2909
Anderson Engineering of Minnesota, LLC.

CERTIFIED LAND CORNER

History of corner established since Original Government Survey

This corner was set by Bryan Meyer in 1990 while completing a survey for the Monroe County Highway Commissioner of 13th Avenue and Cliff Court now known as Havenwood Road and Haven Avenue respectively. The PLAT OF SURVEY is recorded at the Monroe County Highway Department, reference file number 3982.

No. _____

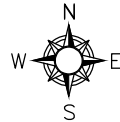
Description of evidence found

On August 29, 2012, Anderson Engineering of Minnesota located the 3/4 inch x 24 inch round iron bar at the base of a right-of-way post.

Description of corner and witness monuments, references and accessories used to perpetuate the original or re-established location of this corner:

Witnesses to corner location:

Nick Hillmer
Josh Oslund
Dan Greenwald



MONROE COUNTY
 COORDINATE SYSTEM
 NAD 1983 (2007)

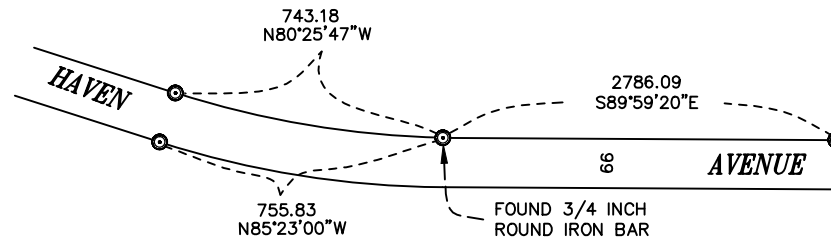
3/4 INCH x 24 INCH ROUND IRON BAR

Northing (Y) 375127.06
 Easting (X) 655732.25

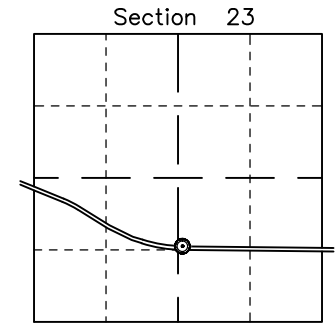
Base Station - 22 182W

Northing (Y) 408053.25
 Easting (X) 679287.00

All distances are shown in U.S. Survey Feet.
 Bearings are for tie reference purposes only.
 Coordinates were derived from RTK GNSS procedures.



⊙ Solid 3/4 inch x 24 inch Round Iron Bar

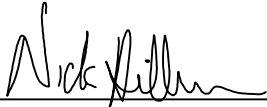


⊙ = LOCATION CORNER
 Corner I.D. PLATTED
 T 17 N R 3 W
 Town of Angelo
 Monroe County, WI.

CERTIFICATE

I, Nicholas M. Hillmer, do hereby certify that this document and the data contained herein was prepared by me or under my direct supervision and that I am a duly Licensed Land Surveyor under the laws of the State of Wisconsin.

Dated this 23rd day of May, 2013



Nicholas M. Hillmer, P.L.S. 2909
Anderson Engineering of Minnesota, LLC.

CERTIFIED LAND CORNER

History of corner established since Original Government Survey

This corner was set by Bryan Meyer in 1990 while completing a survey for the Monroe County Highway Commissioner of 13th Avenue and Cliff Court now known as Havenwood Road and Haven Avenue respectively. The PLAT OF SURVEY is recorded at the Monroe County Highway Department, reference file number 3982.

Description of evidence found

On August 29, 2012, Anderson Engineering of Minnesota located the 3/4 inch x 24 inch round iron bar inside the base of a right-of-way post.

No. _____
[]

Description of corner and witness monuments, references and accessories used to perpetuate the original or re-established location of this corner:

Witnesses to corner location:

Nick Hillmer
Josh Oslund
Dan Greenwald

MONROE COUNTY
COORDINATE SYSTEM
NAD 1983 (2007)

3/4 INCH x 24 INCH ROUND IRON BAR

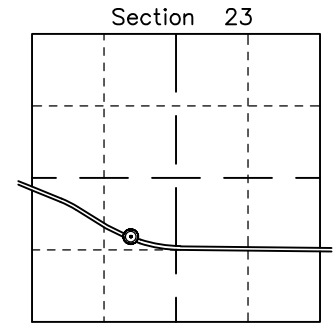
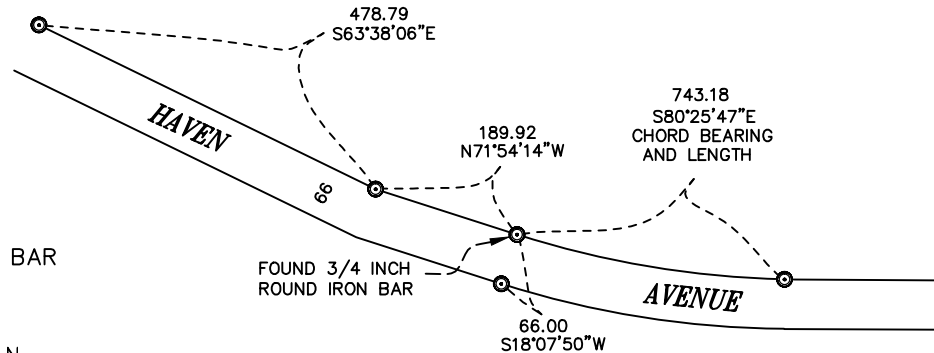
Northing (Y) 375250.61

Easting (X) 654999.41

Base Station - 22 182W

Northing (Y) 408053.25

Easting (X) 679287.00



⊙ = LOCATION CORNER
Corner I.D. PLATTED
T 17 N R 3 W
Town of Angelo
Monroe County, WI.

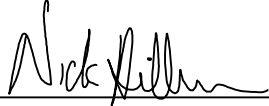
⊙ Solid 3/4 inch x 24 inch Round Iron Bar

All distances are shown in U.S. Survey Feet.
Bearings are for tie reference purposes only.
Coordinates were derived from RTK GNSS procedures.

CERTIFICATE

I, Nicholas M. Hillmer, do hereby certify that this document and the data contained herein was prepared by me or under my direct supervision and that I am a duly Licensed Land Surveyor under the laws of the State of Wisconsin.

Dated this 23rd day of May, 2013



Nicholas M. Hillmer, P.L.S. 2909
Anderson Engineering of Minnesota, LLC.

CERTIFIED LAND CORNER

History of corner established since Original Government Survey

This corner was set by Bryan Meyer in 1990 while completing a survey for the Monroe County Highway Commissioner of 13th Avenue and Cliff Court now known as Havenwood Road and Haven Avenue respectively. The PLAT OF SURVEY is recorded at the Monroe County Highway Department, reference file number 3982.

Description of evidence found

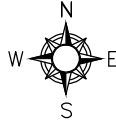
On August 29, 2012, Anderson Engineering of Minnesota located the 3/4 inch x 24 inch round iron bar inside the base of a right-of-way post.

No. _____

Description of corner and witness monuments, references and accessories used to perpetuate the original or re-established location of this corner:

Witnesses to corner location:

Nick Hillmer
Josh Oslund
Dan Greenwald



MONROE COUNTY
 COORDINATE SYSTEM
 NAD 1983 (2007)

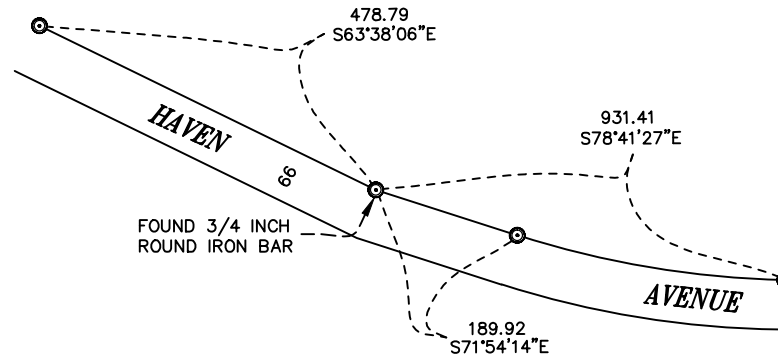
3/4 INCH x 24 INCH ROUND IRON BAR

Northing (Y) 375309.71
 Easting (X) 654818.92

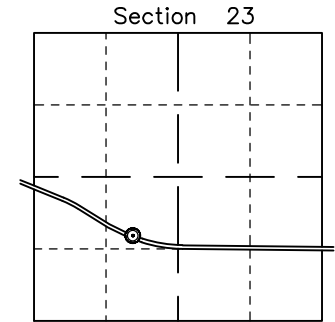
Base Station - 22 182W

Northing (Y) 408053.25
 Easting (X) 679287.00

All distances are shown in U.S. Survey Feet.
 Bearings are for tie reference purposes only.
 Coordinates were derived from RTK GNSS procedures.



⊙ Solid 3/4 inch x 24 inch Round Iron Bar

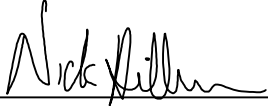


⊙ = LOCATION CORNER
 Corner I.D. PLATTED
 T 17 N R 3 W
 Town of Angelo
 Monroe County, WI.

CERTIFICATE

I, Nicholas M. Hillmer, do hereby certify that this document and the data contained herein was prepared by me or under my direct supervision and that I am a duly Licensed Land Surveyor under the laws of the State of Wisconsin.

Dated this 23rd day of May, 2013



Nicholas M. Hillmer, P.L.S. 2909
Anderson Engineering of Minnesota, LLC.

CERTIFIED LAND CORNER

History of corner established since Original Government Survey

This corner was set by Bryan Meyer in 1990 while completing a survey for the Monroe County Highway Commissioner of 13th Avenue and Cliff Court now known as Havenwood Road and Haven Avenue respectively. The PLAT OF SURVEY is recorded at the Monroe County Highway Department, reference file number 3982.

Description of evidence found

On August 29, 2012, Anderson Engineering of Minnesota located the 3/4 inch x 24 inch round iron bar inside the base of a right-of-way post.

No. _____

Description of corner and witness monuments, references and accessories used to perpetuate the original or re-established location of this corner:

Witnesses to corner location:

Nick Hillmer
Josh Oslund
Dan Greenwald



MONROE COUNTY
 COORDINATE SYSTEM
 NAD 1983 (2007)

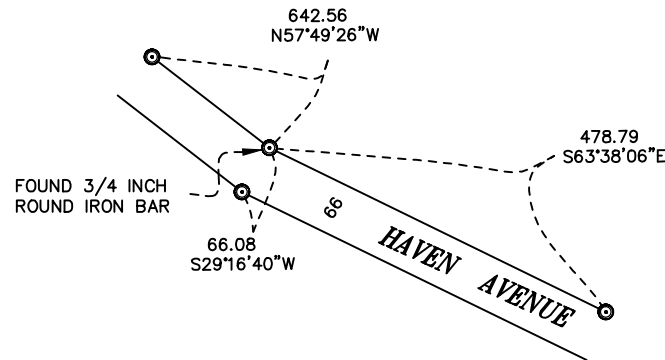
3/4 INCH x 24 INCH ROUND IRON BAR

Northing (Y) 375522.33
 Easting (X) 654389.93

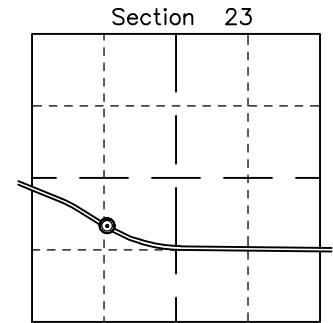
Base Station - 22 182W

Northing (Y) 408053.25
 Easting (X) 679287.00

All distances are shown in U.S. Survey Feet.
 Bearings are for tie reference purposes only.
 Coordinates were derived from RTK GNSS procedures.



⊙ Solid 3/4 inch x 24 inch Round Iron Bar

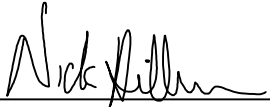


⊙ = LOCATION CORNER
 Corner I.D. PLATTED
 T 17 N R 3 W
 Town of Angelo
 Monroe County, WI.

CERTIFICATE

I, Nicholas M. Hillmer, do hereby certify that this document and the data contained herein was prepared by me or under my direct supervision and that I am a duly Licensed Land Surveyor under the laws of the State of Wisconsin.

Dated this 23rd day of May, 2013



Nicholas M. Hillmer, P.L.S. 2909
Anderson Engineering of Minnesota, LLC.

CERTIFIED LAND CORNER

History of corner established since Original Government Survey

This corner was set by Bryan Meyer in 1990 while completing a survey for the Monroe County Highway Commissioner of 13th Avenue and Cliff Court now known as Havenwood Road and Haven Avenue respectively. The PLAT OF SURVEY is recorded at the Monroe County Highway Department, reference file number 3982.

Description of evidence found

On August 29, 2012, Anderson Engineering of Minnesota located the 3/4 inch x 24 inch round iron bar inside the base of a right-of-way post.

No. _____

Description of corner and witness monuments, references and accessories used to perpetuate the original or re-established location of this corner:

Witnesses to corner location:

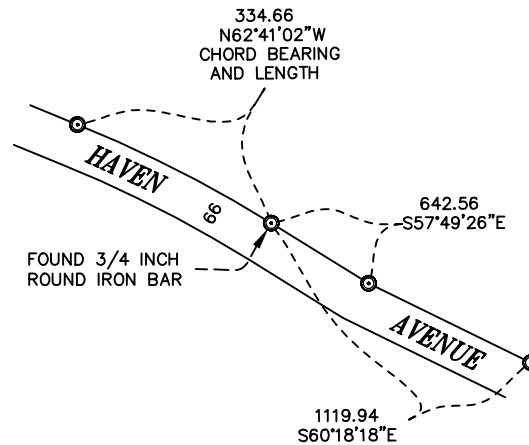
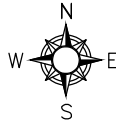
Nick Hillmer
Josh Oslund
Dan Greenwald

MONROE COUNTY
 COORDINATE SYSTEM
 NAD 1983 (2007)

3/4 INCH x 24 INCH ROUND IRON BAR

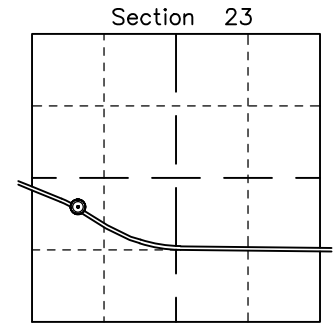
Northing (Y) 375864.51
 Easting (X) 653846.06

Base Station - 22 182W
 Northing (Y) 408053.25
 Easting (X) 679287.00



⊙ Solid 3/4 inch x 24 inch Round Iron Bar

All distances are shown in U.S. Survey Feet.
 Bearings are for tie reference purposes only.
 Coordinates were derived from RTK GNSS procedures.

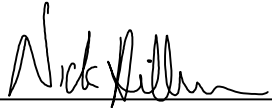


⊙ = LOCATION CORNER
 Corner I.D. PLATTED
 T 17 N R 3 W
 Town of Angelo
 Monroe County, WI.

CERTIFICATE

I, Nicholas M. Hillmer, do hereby certify that this document and the data contained herein was prepared by me or under my direct supervision and that I am a duly Licensed Land Surveyor under the laws of the State of Wisconsin.

Dated this 23rd day of May, 2013



Nicholas M. Hillmer, P.L.S. 2909
Anderson Engineering of Minnesota, LLC.

CERTIFIED LAND CORNER

History of corner established since Original Government Survey

This corner was set by Bryan Meyer in 1990 while completing a survey for the Monroe County Highway Commissioner of 13th Avenue and Cliff Court now known as Havenwood Road and Haven Avenue respectively. The PLAT OF SURVEY is recorded at the Monroe County Highway Department, reference file number 3982.

Description of evidence found

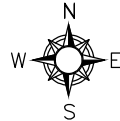
On August 29, 2012, Anderson Engineering of Minnesota located the 3/4 inch x 24 inch round iron bar inside the base of a right-of-way post.

No. _____

Description of corner and witness monuments, references and accessories used to perpetuate the original or re-established location of this corner:

Witnesses to corner location:

Nick Hillmer
Josh Oslund
Dan Greenwald



MONROE COUNTY
 COORDINATE SYSTEM
 NAD 1983 (2007)

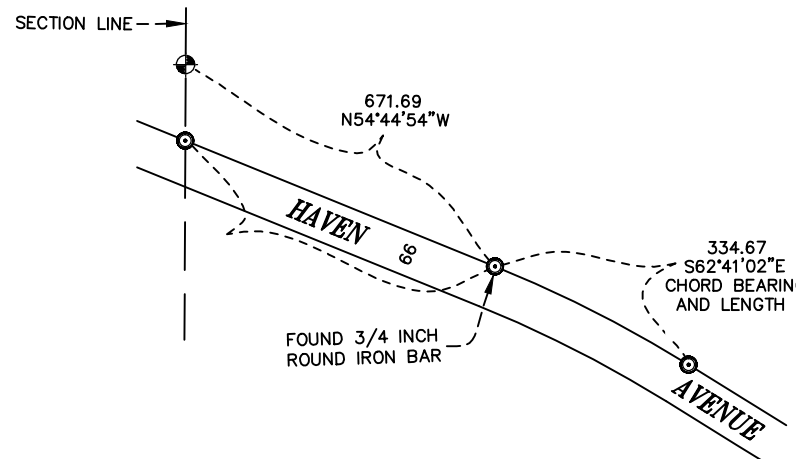
3/4 INCH x 24 INCH ROUND IRON BAR

Northing (Y) 376018.09
 Easting (X) 653548.72

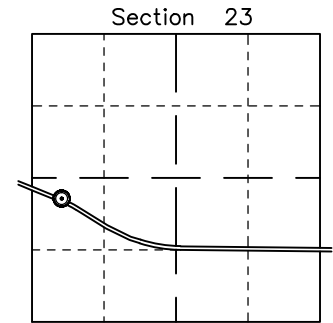
Base Station - 22 182W

Northing (Y) 408053.25
 Easting (X) 679287.00

All distances are shown in U.S. Survey Feet.
 Bearings are for tie reference purposes only.
 Coordinates were derived from RTK GNSS procedures.



- ⊙ Solid 3/4 inch x 24 inch Round Iron Bar
- ⊕ Harrison Marker

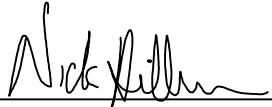


⊙ = LOCATION CORNER
 Corner I.D. PLATTED
 T 17 N R 3 W
 Town of Angelo
 Monroe County, WI.

CERTIFICATE

I, Nicholas M. Hillmer, do hereby certify that this document and the data contained herein was prepared by me or under my direct supervision and that I am a duly Licensed Land Surveyor under the laws of the State of Wisconsin.

Dated this 23rd day of May, 2013



Nicholas M. Hillmer, P.L.S. 2909
Anderson Engineering of Minnesota, LLC.

CERTIFIED LAND CORNER

History of corner established since Original Government Survey

This corner was set by Bryan Meyer in 1990 while completing a survey for the Monroe County Highway Commissioner of 13th Avenue and Cliff Court now known as Havenwood Road and Haven Avenue respectively. The PLAT OF SURVEY is recorded at the Monroe County Highway Department, reference file number 3982.

Description of evidence found

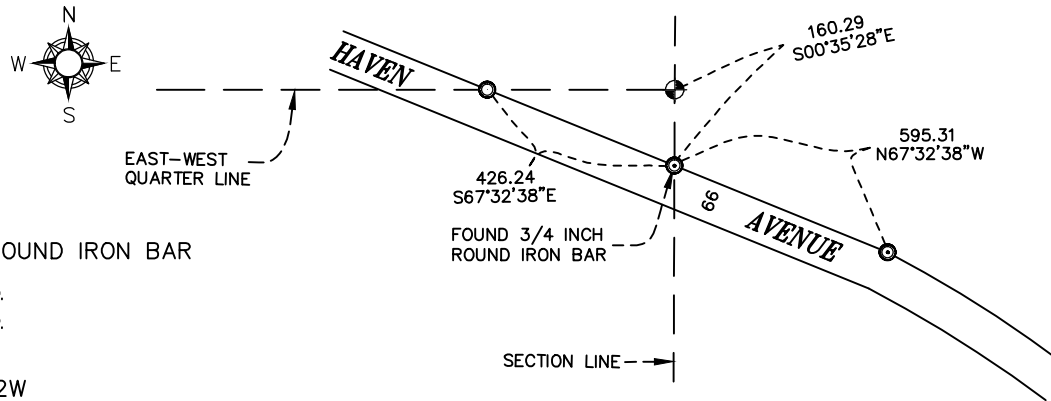
On August 29, 2012, Anderson Engineering of Minnesota located the 3/4 inch x 24 inch round iron bar inside the base of a right-of-way post.

No. _____

Description of corner and witness monuments, references and accessories used to perpetuate the original or re-established location of this corner:

Witnesses to corner location:

Nick Hillmer
Josh Oslund
Dan Greenwald



MONROE COUNTY
COORDINATE SYSTEM
NAD 1983 (2007)

3/4 INCH x 24 INCH ROUND IRON BAR

Northing (Y) 376245.48



Easting (X) 652998.55

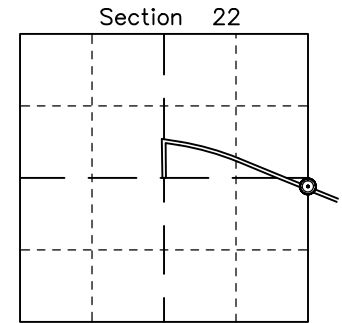
Base Station - 22 182W

Northing (Y) 408053.25

Easting (X) 679287.00

All distances are shown in U.S. Survey Feet.
Bearings are for tie reference purposes only.
Coordinates were derived from RTK GNSS procedures.

-  Solid 3/4 inch x 24 inch Round Iron Bar
-  Harrison Marker

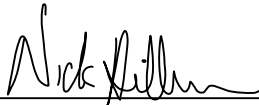


⊙ = LOCATION CORNER
 Corner I.D. PLATTED
 T 17 N R 3 W
 Town of Angelo
 Monroe County, WI.

CERTIFICATE

I, Nicholas M. Hillmer, do hereby certify that this document and the data contained herein was prepared by me or under my direct supervision and that I am a duly Licensed Land Surveyor under the laws of the State of Wisconsin.

Dated this 23rd day of May, 2013



Nicholas M. Hillmer, P.L.S. 2909
Anderson Engineering of Minnesota, LLC.

CERTIFIED LAND CORNER

History of corner established since Original Government Survey

The 1940's McCoy boundary notes show a corner at this location. In April of 1981 Harley Sime found the McCoy marker and did not accept the corner after surveying the section. Sime set a Harrison monument by using single proportionate measurement.

Description of evidence found

On August 31st, 2012, Anderson Engineering of Minnesota located the Harrison monument flush with the ground and 0.2 feet south of a metal post with survey marker sign. The McCoy monument shown on Sime's 1981 certified land corner certificate was not found.

No. _____
21703222000

Description of corner and witness monuments, references and accessories used to perpetuate the original or re-established location of this corner:

Witnesses to corner location:

Nick Hillmer
Josh Oslund
Dan Greenwald

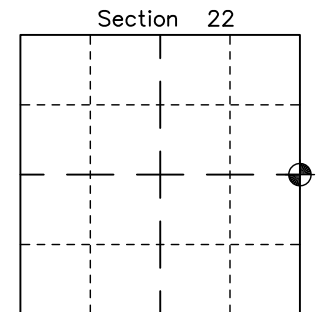
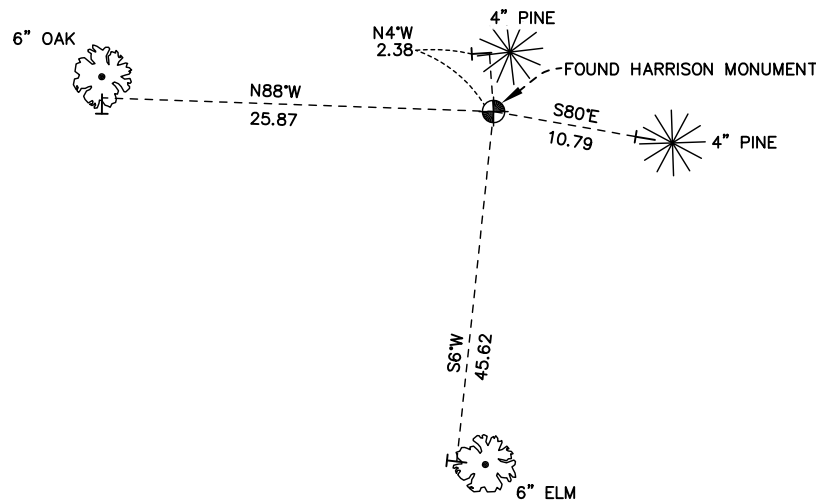
MONROE COUNTY
COORDINATE SYSTEM
NAD 1983 (2007)

HARRISON MONUMENT
Northing (Y) 376405.76
Easting (X) 653000.20

Base Station - 22 182W
Northing (Y) 408053.25
Easting (X) 679287.00



All distances are shown in U.S. Survey Feet.
Ties are to 60D nails set in trees.
Bearings are for tie reference purposes only.
Coordinates were derived from RTK GNSS procedures.

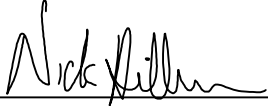


● = LOCATION CORNER
Corner I.D. E 1/4 22
T 17 N R 3 W
Town of Angelo
Monroe County, WI.

CERTIFICATE

I, Nicholas M. Hillmer, do hereby certify that this document and the data contained herein was prepared by me or under my direct supervision and that I am a duly Licensed Land Surveyor under the laws of the State of Wisconsin.

Dated this 23rd day of May, 2013



Nicholas M. Hillmer, P.L.S. 2909
Anderson Engineering of Minnesota, LLC.

CERTIFIED LAND CORNER

History of corner established since Original Government Survey

This corner was set by Bryan Meyer in 1990 while completing a survey for the Monroe County Highway Commissioner of 13th Avenue and Cliff Court now known as Havenwood Road and Haven Avenue respectively. The PLAT OF SURVEY is recorded at the Monroe County Highway Department, reference file number 3982.

Description of evidence found

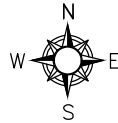
On August 29, 2012, Anderson Engineering of Minnesota located the 3/4 inch x 24 inch round iron bar inside the base of a right-of-way post.

No. _____

Description of corner and witness monuments, references and accessories used to perpetuate the original or re-established location of this corner:

Witnesses to corner location:

Nick Hillmer
Josh Oslund
Dan Greenwald



MONROE COUNTY
 COORDINATE SYSTEM
 NAD 1983 (2007)

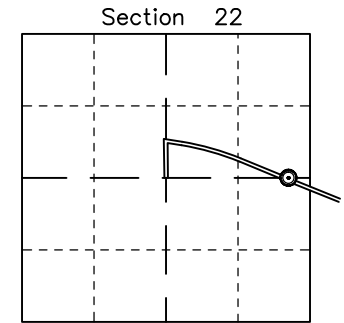
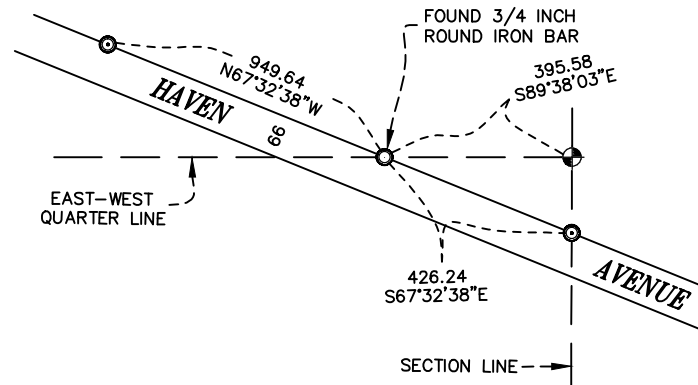
3/4 INCH x 24 INCH ROUND IRON BAR

Northing (Y) 376408.29
 Easting (X) 652604.63

Base Station - 22 182W

Northing (Y) 408053.25
 Easting (X) 679287.00

All distances are shown in U.S. Survey Feet.
 Bearings are for tie reference purposes only.
 Coordinates were derived from RTK GNSS procedures.



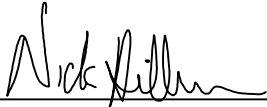
- ⊙ = Solid 3/4 inch x 24 inch Round Iron Bar
- ⊕ = Harrison Marker

⊙ = LOCATION CORNER
 Corner I.D. PLATTED
 T 17 N R 3 W
 Town of Angelo
 Monroe County, WI.

CERTIFICATE

I, Nicholas M. Hillmer, do hereby certify that this document and the data contained herein was prepared by me or under my direct supervision and that I am a duly Licensed Land Surveyor under the laws of the State of Wisconsin.

Dated this 23rd day of May, 2013



Nicholas M. Hillmer, P.L.S. 2909
Anderson Engineering of Minnesota, LLC.

CERTIFIED LAND CORNER

No. _____
[]

History of corner established since Original Government Survey

This corner was set by Bryan Meyer in 1990 while completing a survey for the Monroe County Highway Commissioner of 13th Avenue and Cliff Court now known as Havenwood Road and Haven Avenue respectively. The PLAT OF SURVEY is recorded at the Monroe County Highway Department, reference file number 3982.

Description of evidence found

On August 29, 2012, Anderson Engineering of Minnesota located the 3/4 inch x 24 inch round iron bar inside the base of a right-of-way post.

Description of corner and witness monuments, references and accessories used to perpetuate the original or re-established location of this corner:

Witnesses to corner location:

Nick Hillmer
Josh Oslund
Dan Greenwald



MONROE COUNTY
COORDINATE SYSTEM
NAD 1983 (2007)

3/4 INCH x 24 INCH ROUND IRON BAR

Northing (Y) 376771.03

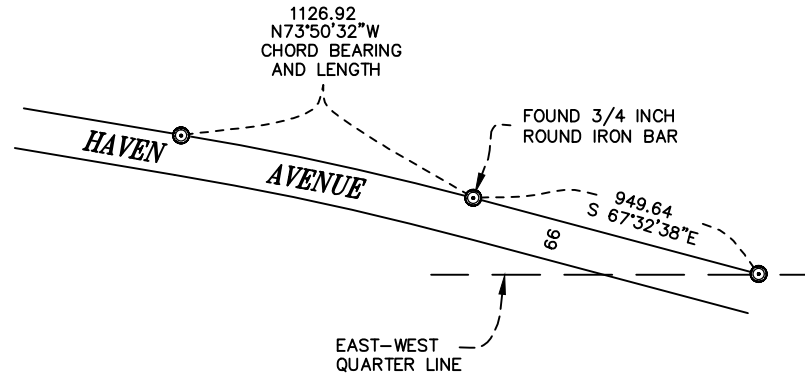
Easting (X) 651727.00

Base Station - 22 182W

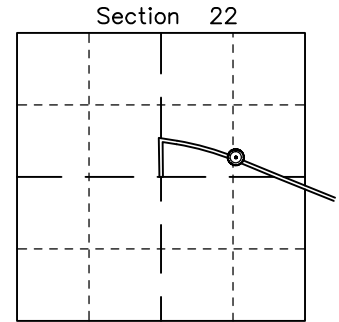
Northing (Y) 408053.25

Easting (X) 679287.00

All distances are shown in U.S. Survey Feet.
Bearings are for tie reference purposes only.
Coordinates were derived from RTK GNSS procedures.



⊙ Solid 3/4 inch x 24 inch Round Iron Bar

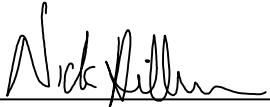


⊙ = LOCATION CORNER
Corner I.D. PLATTED
T 17 N R 3 W
Town of Angelo
Monroe County, WI.

CERTIFICATE

I, Nicholas M. Hillmer, do hereby certify that this document and the data contained herein was prepared by me or under my direct supervision and that I am a duly Licensed Land Surveyor under the laws of the State of Wisconsin.

Dated this 23rd day of May, 2013



Nicholas M. Hillmer, P.L.S. 2909
Anderson Engineering of Minnesota, LLC.

CERTIFIED LAND CORNER

History of corner established since Original Government Survey

This corner was set by Bryan Meyer in 1990 while completing a survey for the Monroe County Highway Commissioner of 13th Avenue and Cliff Court now known as Havenwood Road and Haven Avenue respectively. The PLAT OF SURVEY is recorded at the Monroe County Highway Department, reference file number 3982.

Description of evidence found

On August 29, 2012, Anderson Engineering of Minnesota located the 3/4 inch x 24 inch round iron bar inside the base of a right-of-way post.

No. _____

Description of corner and witness monuments, references and accessories used to perpetuate the original or re-established location of this corner:

Witnesses to corner location:

Nick Hillmer
Josh Oslund
Dan Greenwald



MONROE COUNTY
 COORDINATE SYSTEM
NAD 1983 (2007)

3/4 INCH x 24 INCH ROUND IRON BAR

Northing (Y) 377084.63

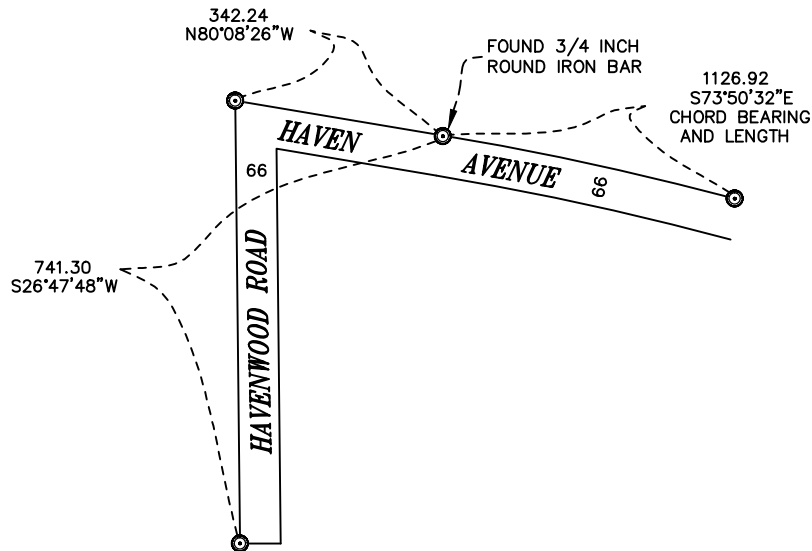
Easting (X) 650644.59

Base Station - 22 182W

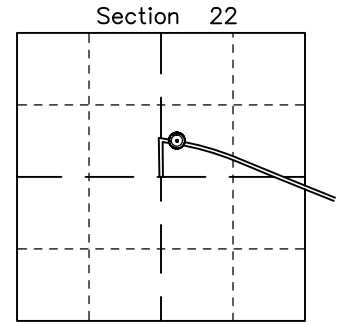
Northing (Y) 408053.25

Easting (X) 679287.00

All distances are shown in U.S. Survey Feet.
 Bearings are for tie reference purposes only.
 Coordinates were derived from RTK GNSS procedures.



⊙ Solid 3/4 inch x 24 inch Round Iron Bar

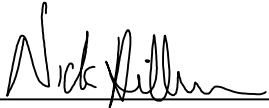


⊙ = LOCATION CORNER
 Corner I.D. PLATTED
 T 17 N R 3 W
 Town of Angelo
 Monroe County, WI.

CERTIFICATE

I, Nicholas M. Hillmer, do hereby certify that this document and the data contained herein was prepared by me or under my direct supervision and that I am a duly Licensed Land Surveyor under the laws of the State of Wisconsin.

Dated this 23rd day of May, 2013



Nicholas M. Hillmer, P.L.S. 2909
Anderson Engineering of Minnesota, LLC.

CERTIFIED LAND CORNER

History of corner established since Original Government Survey

This corner was set by Bryan Meyer in 1990 while completing a survey for the Monroe County Highway Commissioner of 13th Avenue and Cliff Court now known as Havenwood Road and Haven Avenue respectively. The PLAT OF SURVEY is recorded at the Monroe County Highway Department, reference file number 3982.

No. _____

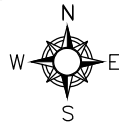
Description of evidence found

On August 29, 2012, Anderson Engineering of Minnesota located the 3/4 inch x 24 inch round iron bar inside the base of a right-of-way post.

Description of corner and witness monuments, references and accessories used to perpetuate the original or re-established location of this corner:

Witnesses to corner location:

Nick Hillmer
Josh Oslund
Dan Greenwald



MONROE COUNTY
 COORDINATE SYSTEM
NAD 1983 (2007)

3/4 INCH x 24 INCH ROUND IRON BAR

Northing (Y) 377143.23

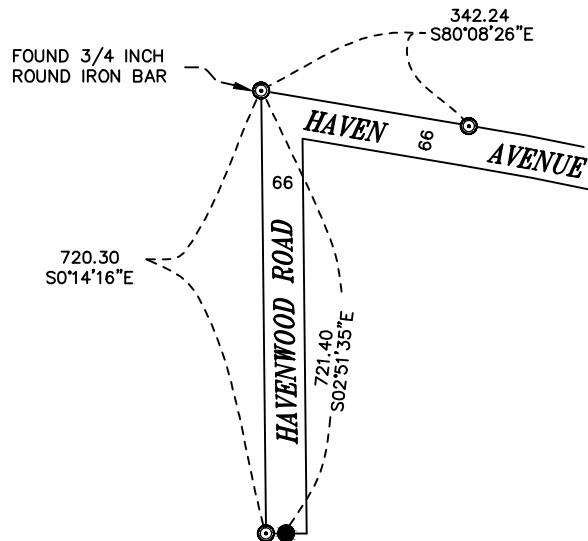
Easting (X) 650307.41

Base Station - 22 182W

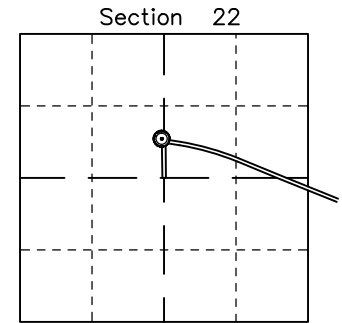
Northing (Y) 408053.25

Easting (X) 679287.00

All distances are shown in U.S. Survey Feet.
 Bearings are for tie reference purposes only.
 Coordinates were derived from RTK GNSS procedures.



- ⊙ = Solid 3/4 inch x 24 inch Round Iron Bar
- = Solid 1 1/4 inch 30 inch Round Iron Bar

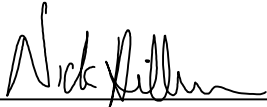


⊙ = LOCATION CORNER
 Corner I.D. PLATTED
 T 17 N R 3 W
 Town of Angelo
 Monroe County, WI.

CERTIFICATE

I, Nicholas M. Hillmer, do hereby certify that this document and the data contained herein was prepared by me or under my direct supervision and that I am a duly Licensed Land Surveyor under the laws of the State of Wisconsin.

Dated this 23rd day of May, 2013



Nicholas M. Hillmer, P.L.S. 2909
Anderson Engineering of Minnesota, LLC.

CERTIFIED LAND CORNER

History of corner established since Original Government Survey

This corner was set by Bryan Meyer in 1990 while completing a survey for the Monroe County Highway Commissioner of 13th Avenue and Cliff Court now known as Havenwood Road and Haven Avenue respectively. The PLAT OF SURVEY is recorded at the Monroe County Highway Department, reference file number 3982.

Description of evidence found

On August 29, 2012, Anderson Engineering of Minnesota located the 3/4 inch x 24 inch round iron bar inside the base of a right-of-way post.

No. _____
[]

Description of corner and witness monuments, references and accessories used to perpetuate the original or re-established location of this corner:

Witnesses to corner location:

Nick Hillmer
Josh Oslund
Dan Greenwald

MONROE COUNTY
COORDINATE SYSTEM
NAD 1983 (2007)

3/4 INCH x 24 INCH ROUND IRON BAR

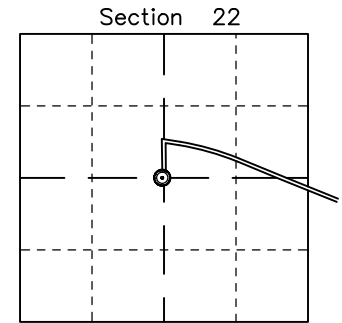
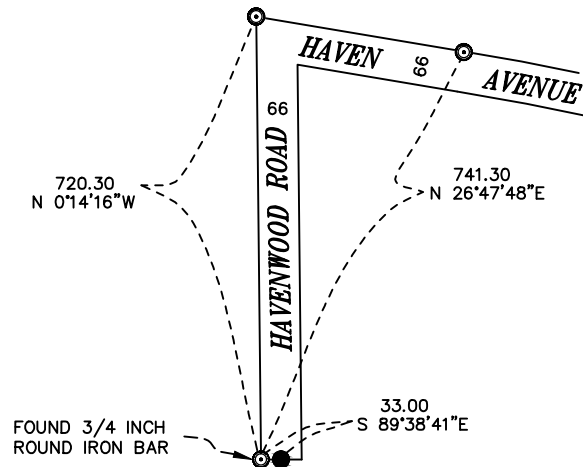
Northing (Y) 376422.94

Easting (X) 650310.40

Base Station - 22 182W

Northing (Y) 408053.25

Easting (X) 679287.00



⊙ = LOCATION CORNER
Corner I.D. PLATTED
T 17 N R 3 W
Town of Angelo
Monroe County, WI.

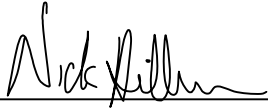
All distances are shown in U.S. Survey Feet.
Bearings are for tie reference purposes only.
Coordinates were derived from RTK GNSS procedures.

- ⊙ Solid 3/4 inch x 24 inch Round Iron Bar
- Solid 1 1/4 inch 30 inch Round Iron Bar

CERTIFICATE

I, Nicholas M. Hillmer, do hereby certify that this document and the data contained herein was prepared by me or under my direct supervision and that I am a duly Licensed Land Surveyor under the laws of the State of Wisconsin.

Dated this 23rd day of May, 2013



Nicholas M. Hillmer, P.L.S. 2909
Anderson Engineering of Minnesota, LLC.

CERTIFIED LAND CORNER

History of corner established since Original Government Survey

The 1940's McCoy boundary notes show a corner at this location.

Description of evidence found

On August 31st, 2012, Anderson Engineering of Minnesota located the McCoy monument, a 4 inch U.S Army Corps of Engineers survey control mark disk set in concrete. The monument was broke in half and disturbed. No recorded history of this monument being perpetuated or utilized in subsequent surveys. The monument was not accepted as the corner. On April 22nd, 2013, Anderson Engineering of Minnesota set a 30 inch Berntsen aluminum dig monument with a 3 1/4 inch aluminum cap, stamped "FORT MCCOY BOUNDARY" "2013" "ANDERSON ENG. OF MN." The monument was set midway online between the west quarter corner and the center of Section 22.

No. 21703222030

Description of corner and witness monuments, references and accessories used to perpetuate the original or re-established location of this corner:

Witnesses to corner location:

Nick Hillmer
Josh Oslund
Dan Greenwald

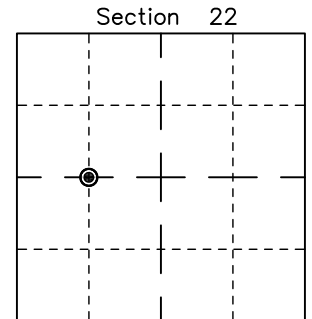
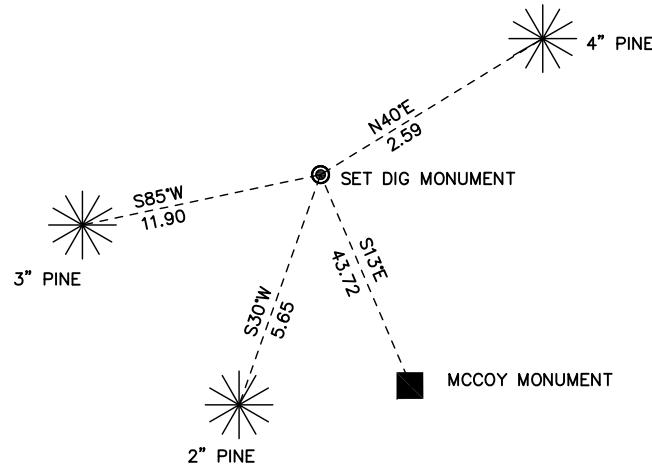


MONROE COUNTY
COORDINATE SYSTEM
NAD 1983 (2007)

MCCOY DIG MONUMENT
Northing (Y) 376431.09
Easting (X) 649032.85

Base Station - 22 182W
Northing (Y) 408053.25
Easting (X) 679287.00

All distances are shown in U.S. Survey Feet.
Ties are to 60D nails set in trees.
Bearings are for tie reference purposes only.
Coordinates were derived from RTK GNSS procedures.

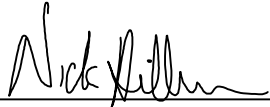


⊙ = LOCATION CORNER
Corner I.D. CW 1/16 22
T 17 N R 3 W
Town of Angelo
Monroe County, WI.

CERTIFICATE

I, Nicholas M. Hillmer, do hereby certify that this document and the data contained herein was prepared by me or under my direct supervision and that I am a duly Licensed Land Surveyor under the laws of the State of Wisconsin.

Dated this 23rd day of May, 2013



Nicholas M. Hillmer, P.L.S. 2909
Anderson Engineering of Minnesota, LLC.

CERTIFIED LAND CORNER

History of corner established since Original Government Survey

The 1940's McCoy boundary notes show a corner at this location.

Description of evidence found

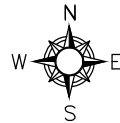
On August 31st, 2012, Anderson Engineering of Minnesota located the McCoy monument, a 4 inch U.S. Army Corps of Engineers survey control mark disk set in concrete 1.5 feet above grade. The concrete is stamped US on the west side. No recorded history of this monument being perpetuated or utilized in subsequent surveys. The monument was not accepted as the corner. On April 23rd, 2013, Anderson Engineering of Minnesota set a 30 inch Berntsen aluminum dig monument with a 3 1/4 inch aluminum cap, stamped "FORT MCCOY BOUNDARY" "2013" "ANDERSON ENG. OF MN". The monument was set at the legal position following a section breakdown.

No. _____
21703221030

Description of corner and witness monuments, references and accessories used to perpetuate the original or re-established location of this corner:

Witnesses to corner location:

Nick Hillmer
Josh Oslund
Dan Greenwald

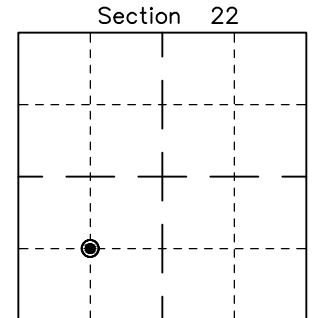
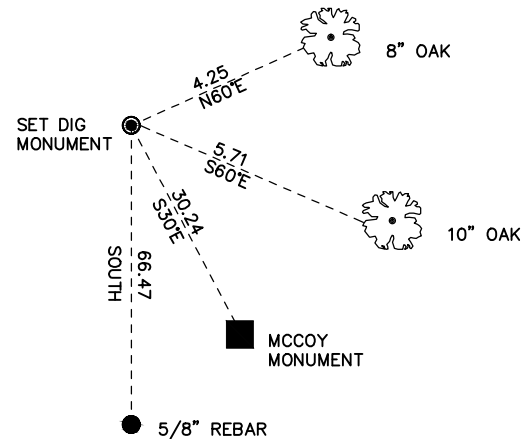


MONROE COUNTY
COORDINATE SYSTEM
NAD 1983 (2007)

MCCOY DIG MONUMENT
Northing (Y) 375111.10
Easting (X) 649040.55

Base Station - 22 182W
Northing (Y) 408053.25
Easting (X) 679287.00

All distances are shown in U.S. Survey Feet.
Ties are to 60D nails set in trees.
Bearings are for tie reference purposes only.
Coordinates were derived from RTK GNSS procedures.

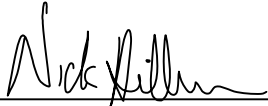


● = LOCATION CORNER
Corner I.D. SW 1/16 22
T 17 N R 3 W
Town of Angelo
Monroe County, WI.

CERTIFICATE

I, Nicholas M. Hillmer, do hereby certify that this document and the data contained herein was prepared by me or under my direct supervision and that I am a duly Licensed Land Surveyor under the laws of the State of Wisconsin.

Dated this 23rd day of May, 2013



Nicholas M. Hillmer, P.L.S. 2909
Anderson Engineering of Minnesota, LLC.

CERTIFIED LAND CORNER

History of corner established since Original Government Survey

The 1940's McCoy boundary notes show a corner at this location.

Description of evidence found

No evidence of the McCoy monument was found. On April 23rd, 2013, Anderson Engineering of Minnesota set a 30 inch Berntsen aluminum dig monument with a 3 1/4 inch aluminum cap, stamped "FORT MCCOY BOUNDARY SURVEY" "2013" "ANDERSON ENG. OF MN." The monument was set midway online between the east quarter corner and the southeast corner of Section 21.

No. _____
21703211000

Description of corner and witness monuments, references and accessories used to perpetuate the original or re-established location of this corner:

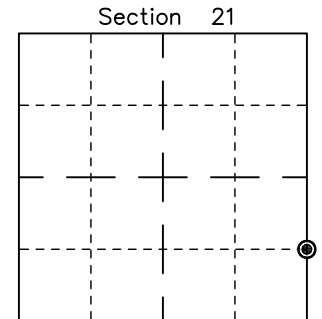
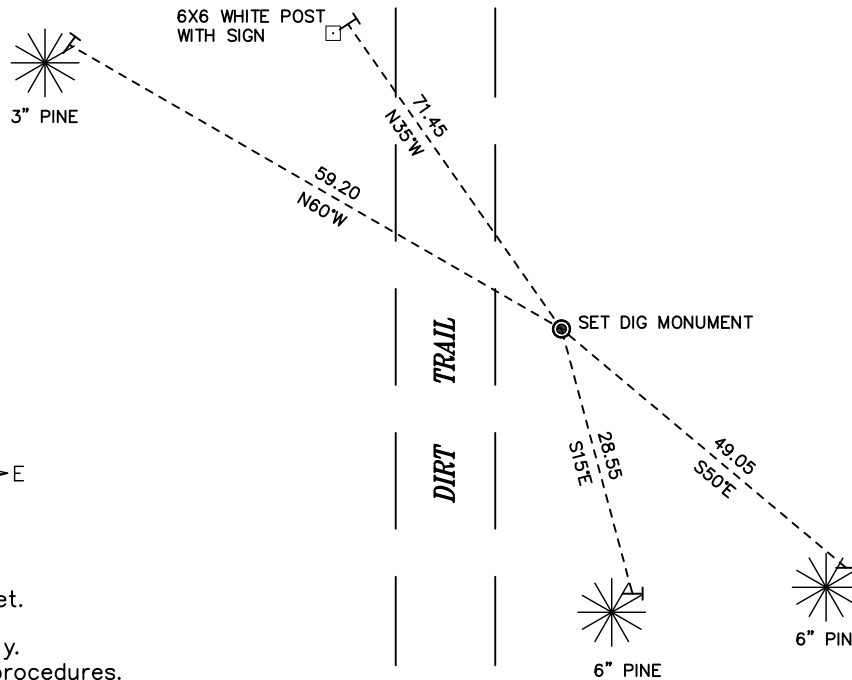
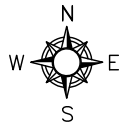
Witnesses to corner location:

Nick Hillmer
Josh Oslund
Dan Greenwald

MONROE COUNTY
COORDINATE SYSTEM
NAD 1983 (2007)

MCCOY DIG MONUMENT
Northing (Y) 375119.26
Easting (X) 647732.13

Base Station - 22 182W
Northing (Y) 408053.25
Easting (X) 679287.00



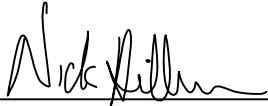
⊙ = LOCATION CORNER
Corner I.D. S 1/16 21
T 17 N R 3 W
Town of Angelo
Monroe County, WI.

All distances are shown in U.S. Survey Feet.
Ties are to 60D nails set in trees.
Bearings are for tie reference purposes only.
Coordinates were derived from RTK GNSS procedures.

CERTIFICATE

I, Nicholas M. Hillmer, do hereby certify that this document and the data contained herein was prepared by me or under my direct supervision and that I am a duly Licensed Land Surveyor under the laws of the State of Wisconsin.

Dated this 23rd day of May, 2013



Nicholas M. Hillmer, P.L.S. 2909
Anderson Engineering of Minnesota, LLC.

CERTIFIED LAND CORNER

No. 21703210000

History of corner established since Original Government Survey

H.F. Schroeder was here in April of 1897. Fred Holden was here in April of 1902. The McCoy boundary notes show a corner at this location. William Jung found a pipe in December of 1982 and replaced it with a Harrison monument. In July of 1987 Bryan Meyer found the monument to be in question. According to Meyer, the location would cause problems with the Town Road which runs along the south line of the SE 1/4-SW 1/4 of Section 22. It would also have made the west line of Section 22 56.5 feet longer than the original notes. Meyer set this corner on line with the southeast corner and south quarter corner of Section 22 and at the same distance from the south quarter corner as the old Harrison location.

Description of evidence found

On September 11th, 2012, Anderson Engineering of Minnesota located the Harrison monument 0.1 feet above the grade and 0.8 feet east of a metal fence post with survey marker sign.

Description of corner and witness monuments, references and accessories used to perpetuate the original or re-established location of this corner:

Witnesses to corner location:

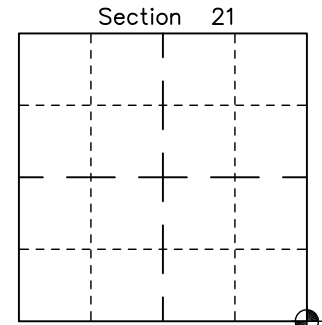
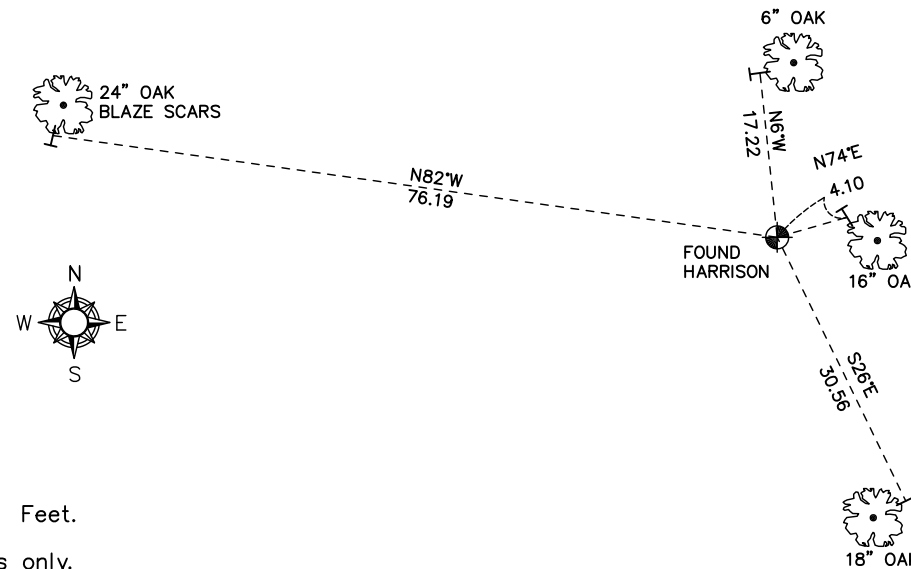
Nick Hillmer
Josh Oslund
Dan Greenwald

MONROE COUNTY
COORDINATE SYSTEM
NAD 1983 (2007)

HARRISON MONUMENT
Northing (Y) 373799.07
Easting (X) 647741.99

Base Station - 22 182W
Northing (Y) 408053.25
Easting (X) 679287.00

All distances are shown in U.S. Survey Feet.
Ties are to 60D nails set in trees.
Bearings are for tie reference purposes only.
Coordinates were derived from RTK GNSS procedures.

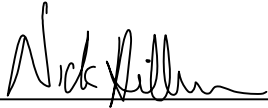


● = LOCATION CORNER
Corner I.D. SE 21
T 17 N R 3 W
Town of Angelo
Monroe County, WI.

CERTIFICATE

I, Nicholas M. Hillmer, do hereby certify that this document and the data contained herein was prepared by me or under my direct supervision and that I am a duly Licensed Land Surveyor under the laws of the State of Wisconsin.

Dated this 23rd day of May, 2013



Nicholas M. Hillmer, P.L.S. 2909
Anderson Engineering of Minnesota, LLC.

CERTIFIED LAND CORNER

History of corner established since Original Government Survey

In April of 2011 Laurence Johns III set a Harrison monument equidistant between the northeast and southeast corners of Section 28 and on the east edge of the excavation fire break.

No. 21703282000

Description of evidence found

On September 11th, 2012, Anderson Engineering of Minnesota located the Harrison monument 0.3 feet above grade and 0.5 feet west of a metal fence post with survey marker sign.

Description of corner and witness monuments, references and accessories used to perpetuate the original or re-established location of this corner:

Witnesses to corner location:

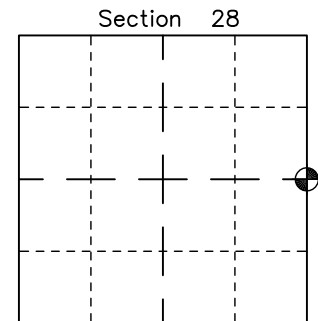
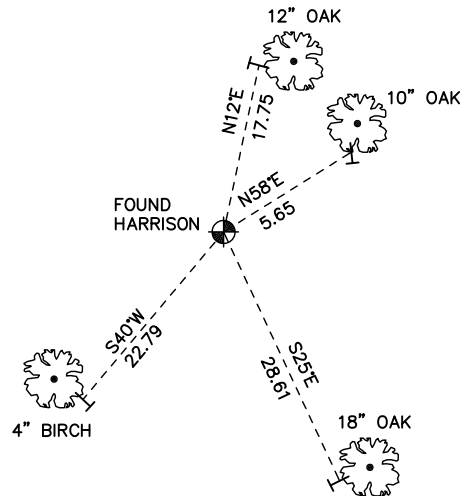
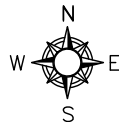
Nick Hillmer
Josh Oslund
Dan Greenwald

MONROE COUNTY
COORDINATE SYSTEM
NAD 1983 (2007)

HARRISON MONUMENT
Northing (Y) 371171.00
Easting (X) 647762.00

Base Station – 22 182W
Northing (Y) 408053.25
Easting (X) 679287.00

All distances are shown in U.S. Survey Feet.
Ties are to 60D nails set in trees.
Bearings are for tie reference purposes only.
Coordinates were derived from RTK GNSS procedures.

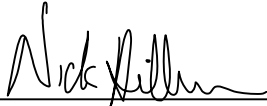


● = LOCATION CORNER
Corner I.D. E 1/4 28
T 17 N R 3 W
Town of Angelo
Monroe County, WI.

CERTIFICATE

I, Nicholas M. Hillmer, do hereby certify that this document and the data contained herein was prepared by me or under my direct supervision and that I am a duly Licensed Land Surveyor under the laws of the State of Wisconsin.

Dated this 23rd day of May, 2013



Nicholas M. Hillmer, P.L.S. 2909
Anderson Engineering of Minnesota, LLC.

CERTIFIED LAND CORNER

History of corner established since Original Government Survey

Hamilton Larue was at this corner in April of 1897. The 1940's McCoy boundary notes show a monument at this corner on line with a fence to the north and 2.5 feet north of a fence to the west. In December of 1982 William Jung found a McCoy concrete marker and accepted it as the corner.

Description of evidence found

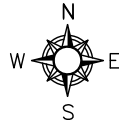
On September 11th, 2012, Anderson Engineering of Minnesota located the McCoy monument, a 4 inch U.S. Army Corps of Engineers survey control mark disk set in concrete 0.8 feet east of a 3 foot metal post. The monument is 30 feet +/- north of the top of hill/slope.

No. 21703280000

Description of corner and witness monuments, references and accessories used to perpetuate the original or re-established location of this corner:

Witnesses to corner location:

Nick Hillmer
Josh Oslund
Dan Greenwald

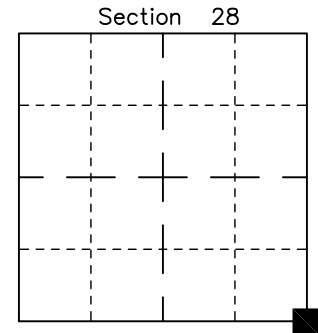
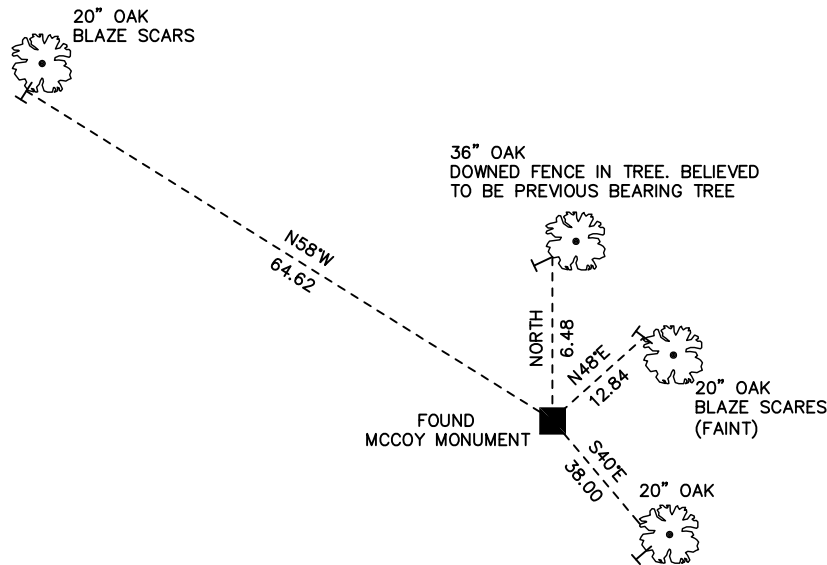


MONROE COUNTY
COORDINATE SYSTEM
NAD 1983 (2007)

MCCOY MONUMENT
Northing (Y) 368543.19
Easting (X) 647738.30

Base Station - 22 182W
Northing (Y) 408053.25
Easting (X) 679287.00

All distances are shown in U.S. Survey Feet.
Ties are to 60D nails set in trees.
Bearings are for tie reference purposes only.
Coordinates were derived from RTK GNSS procedures.

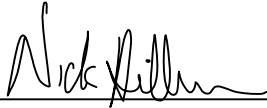


■ = LOCATION CORNER
Corner I.D. SE 28
T 17 N R 3 W
Town of Angelo
Monroe County, WI.

CERTIFICATE

I, Nicholas M. Hillmer, do hereby certify that this document and the data contained herein was prepared by me or under my direct supervision and that I am a duly Licensed Land Surveyor under the laws of the State of Wisconsin.

Dated this 23rd day of May, 2013



Nicholas M. Hillmer, P.L.S. 2909
Anderson Engineering of Minnesota, LLC.

CERTIFIED LAND CORNER

History of corner established since Original Government Survey

In October of 1979 Mark Heidecke set a Harrison monument by extending north the west line of the SW 1/4-SW 1/4 and doubling the distance. (He found a McCoy boundary monument at the W 1/16 of the SW 1/4 and a 3/4 inch iron bar was found at the SW corner of Section 34.)

Description of evidence found

On September 11th, 2012, Anderson Engineering of Minnesota located the Harrison monument 1.2 feet below grade.

No. 21703332000

Description of corner and witness monuments, references and accessories used to perpetuate the original or re-established location of this corner:

Witnesses to corner location:

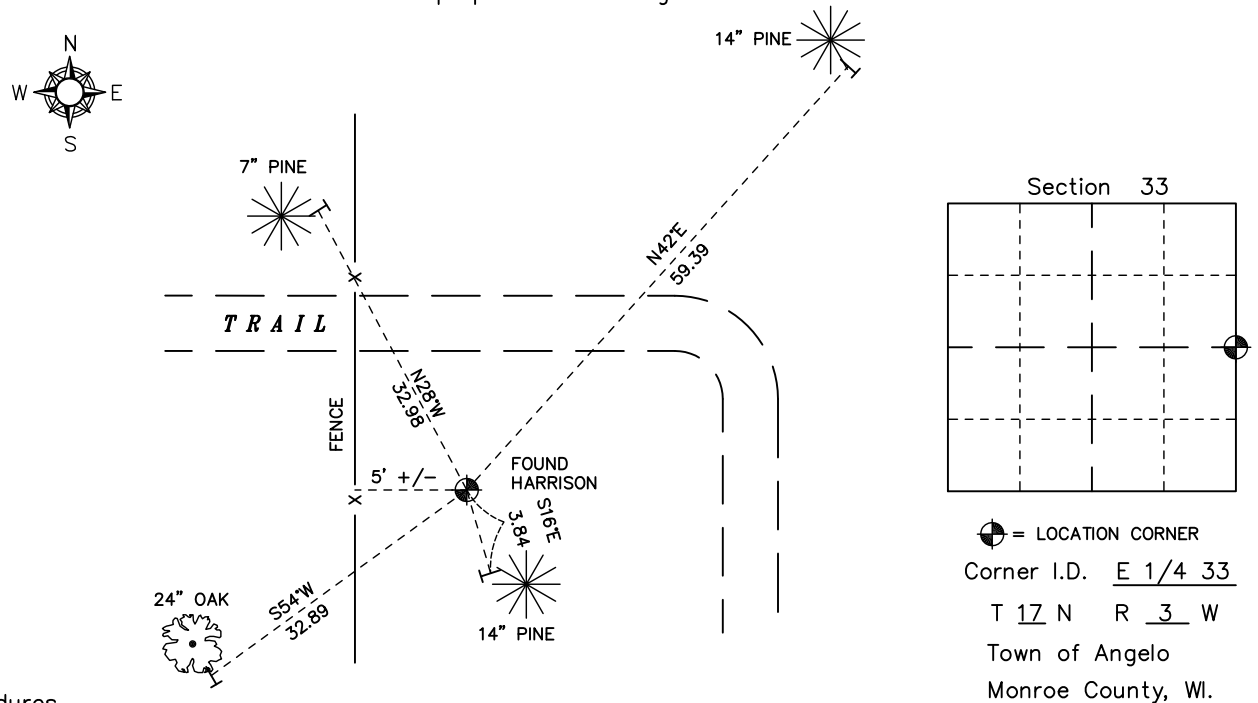
Nick Hillmer
Josh Oslund
Dan Greenwald

MONROE COUNTY
COORDINATE SYSTEM
NAD 1983 (2007)

HARRISON MONUMENT
Northing (Y) 365914.93
Easting (X) 647739.63

Base Station - 22 182W
Northing (Y) 408053.25
Easting (X) 679287.00

All distances are shown in U.S. Survey Feet.
Ties are to 60D nails set in trees.
Bearings are for tie reference purposes only.
Coordinates were derived from RTK GNSS procedures.

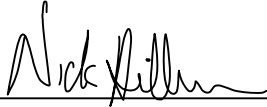


● = LOCATION CORNER
Corner I.D. E 1/4 33
T 17 N R 3 W
Town of Angelo
Monroe County, WI.

CERTIFICATE

I, Nicholas M. Hillmer, do hereby certify that this document and the data contained herein was prepared by me or under my direct supervision and that I am a duly Licensed Land Surveyor under the laws of the State of Wisconsin.

Dated this 23rd day of May, 2013



Nicholas M. Hillmer, P.L.S. 2909
Anderson Engineering of Minnesota, LLC.

CERTIFIED LAND CORNER

History of corner established since Original Government Survey

The 1940's McCoy boundary notes show a corner at this location. In 1998 Rodney Maxwell utilized the McCoy monument while surveying the Southwest Quarter of the Southwest Quarter of Section 34, recorded CSR 1552.

No. 21703331000

Description of evidence found

On September 25th, 2012, Anderson Engineering of Minnesota located the McCoy monument, a 4 inch U.S. Army Corps of Engineers survey control mark disk set in concrete 0.5 foot above grade. The monument is at the intersection of a fence that runs north, south, and east. The monument is accepted as the best available evidence.

Description of corner and witness monuments, references and accessories used to perpetuate the original or re-established location of this corner:

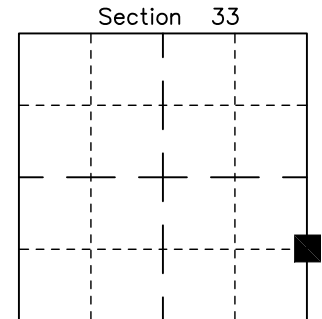
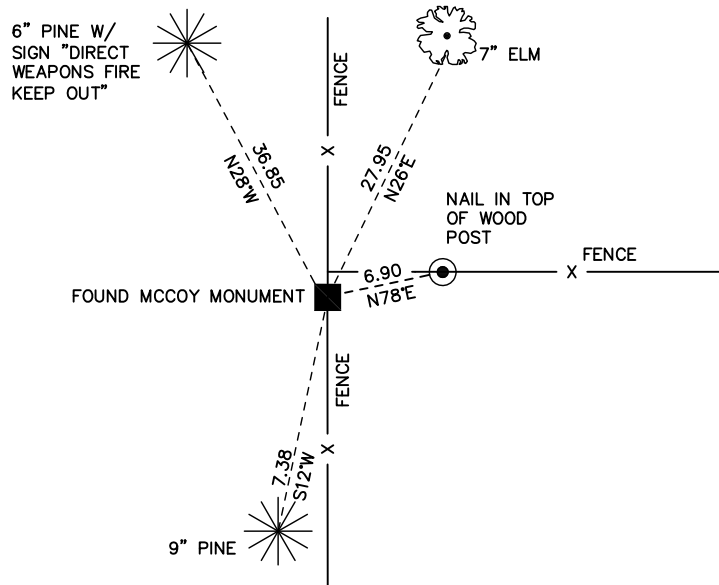
Witnesses to corner location:

Nick Hillmer
Josh Oslund
Dan Greenwald

MONROE COUNTY
COORDINATE SYSTEM
NAD 1983 (2007)

MCCOY MONUMENT
Northing (Y) 364593.87
Easting (X) 647730.44

Base Station - 22 182W
Northing (Y) 408053.25
Easting (X) 679287.00



■ = LOCATION CORNER

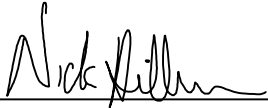
Corner I.D. S 1/16 33
T 17 N R 3 W
Town of Angelo
Monroe County, WI.

All distances are shown in U.S. Survey Feet.
Ties are to 60D nails set in trees.
Bearings are for tie reference purposes only.
Coordinates were derived from RTK GNSS procedures.

CERTIFICATE

I, Nicholas M. Hillmer, do hereby certify that this document and the data contained herein was prepared by me or under my direct supervision and that I am a duly Licensed Land Surveyor under the laws of the State of Wisconsin.

Dated this 23rd day of May, 2013



Nicholas M. Hillmer, P.L.S. 2909
Anderson Engineering of Minnesota, LLC.

CERTIFIED LAND CORNER

History of corner established since Original Government Survey

The 1940's McCoy boundary notes show a corner at this location. Maxwell used this corner in 1997, Vol. 11 CSM 114. Sime utilized this corner in 2002, Vol. 16 CSM 63.

Description of evidence found

On September 25th, 2012, Anderson Engineering of Minnesota located the McCoy monument, a 4 inch U.S. Army Corps of Engineers survey control mark disk set in concrete 1.0 foot above grade.

No. _____
21703331020

Description of corner and witness monuments, references and accessories used to perpetuate the original or re-established location of this corner:

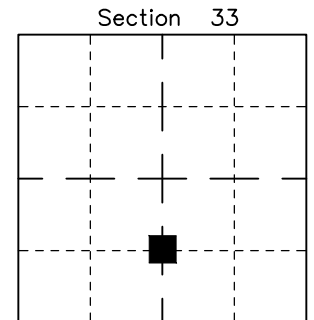
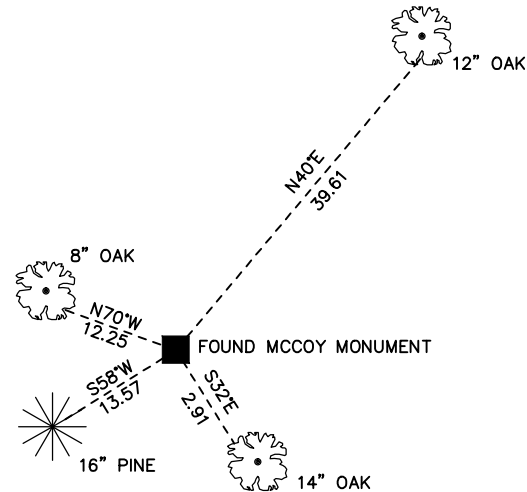
Witnesses to corner location:

Nick Hillmer
Josh Oslund
Dan Greenwald

MONROE COUNTY
COORDINATE SYSTEM
NAD 1983 (2007)

MCCOY MONUMENT
Northing (Y) 364583.87
Easting (X) 645113.79

Base Station - 22 182W
Northing (Y) 408053.25
Easting (X) 679287.00



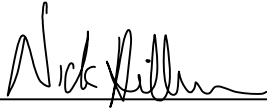
■ = LOCATION CORNER
Corner I.D. CS 1/16 33
T 17 N R 3 W
Town of Angelo
Monroe County, WI.

All distances are shown in U.S. Survey Feet.
Ties are to 60D nails set in trees.
Bearings are for tie reference purposes only.
Coordinates were derived from RTK GNSS procedures.

CERTIFICATE

I, Nicholas M. Hillmer, do hereby certify that this document and the data contained herein was prepared by me or under my direct supervision and that I am a duly Licensed Land Surveyor under the laws of the State of Wisconsin.

Dated this 23rd day of May, 2013



Nicholas M. Hillmer, P.L.S. 2909
Anderson Engineering of Minnesota, LLC.

CERTIFIED LAND CORNER

History of corner established since Original Government Survey

The 1940's McCoy boundary notes show a corner at this location.
Garold Sime utilized this corner in 2002, Vol. 16 CSM 63.

No. 21703332020

Description of evidence found

On September 25th, 2012, Anderson Engineering of Minnesota located the McCoy monument, a 4 inch U.S. Army Corps of Engineers survey control mark disk set in concrete 0.5 feet below grade. The corner is believed to be set based on fence line occupation and is accepted as the best available evidence.

Description of corner and witness monuments, references and accessories used to perpetuate the original or re-established location of this corner:

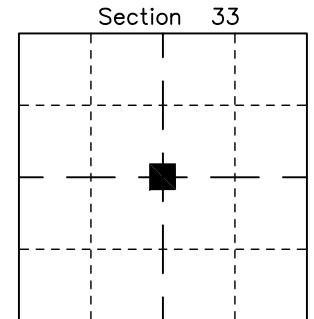
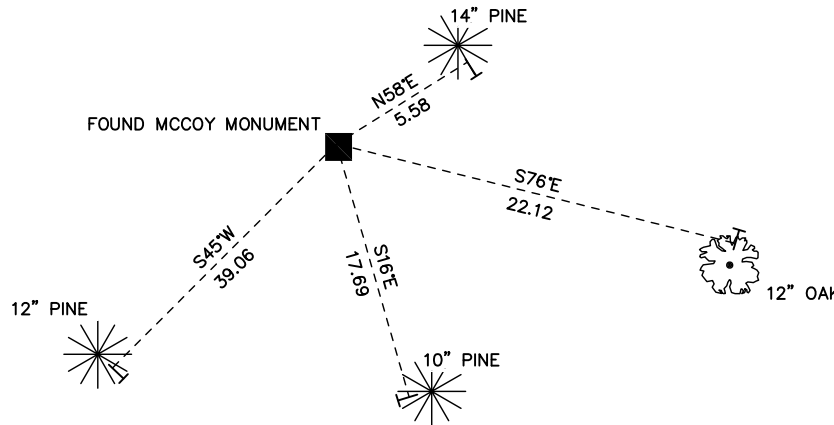
Witnesses to corner location:

Nick Hillmer
Josh Oslund
Dan Greenwald

MONROE COUNTY
COORDINATE SYSTEM
NAD 1983 (2007)

MCCOY MONUMENT
Northing (Y) 365914.17
Easting (X) 645084.39

Base Station - 22 182W
Northing (Y) 408053.25
Easting (X) 679287.00



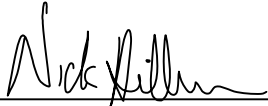
■ = LOCATION CORNER
Corner I.D. C 1/4 33
T 17 N R 3 W
Town of Angelo
Monroe County, WI.

All distances are shown in U.S. Survey Feet.
Ties are to 60D nails set in trees.
Bearings are for tie reference purposes only.
Coordinates were derived from RTK GNSS procedures.

CERTIFICATE

I, Nicholas M. Hillmer, do hereby certify that this document and the data contained herein was prepared by me or under my direct supervision and that I am a duly Licensed Land Surveyor under the laws of the State of Wisconsin.

Dated this 23rd day of May, 2013



Nicholas M. Hillmer, P.L.S. 2909
Anderson Engineering of Minnesota, LLC.

CERTIFIED LAND CORNER

History of corner established since Original Government Survey

The 1940's McCoy boundary notes show a corner at this location.

Description of evidence found

On September 25th, 2012, Anderson Engineering of Minnesota located the McCoy monument, a 4 inch U.S. Army Corps of Engineers survey control mark disk set in concrete 1.4 feet above grade. The monument is at the intersection of a barbed wire fence that runs north, southeast, and west. The monument is accepted as the best available evidence.

No. 21703332030

Description of corner and witness monuments, references and accessories used to perpetuate the original or re-established location of this corner:

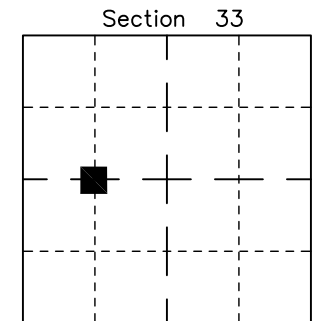
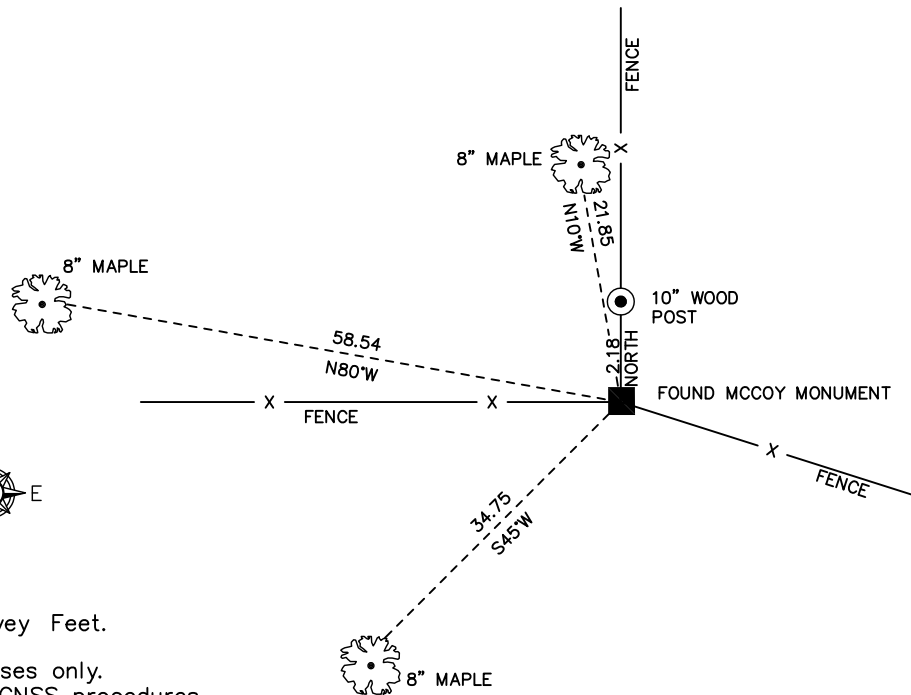
Witnesses to corner location:

Nick Hillmer
Josh Oslund
Dan Greenwald

MONROE COUNTY
COORDINATE SYSTEM
NAD 1983 (2007)

MCCOY MONUMENT
Northing (Y) 365916.85
Easting (X) 643788.04

Base Station - 22 182W
Northing (Y) 408053.25
Easting (X) 679287.00



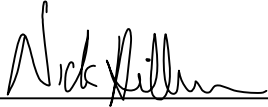
■ = LOCATION CORNER
Corner I.D. CW 1/16 33
T 17 N R 3 W
Town of Angelo
Monroe County, WI.

All distances are shown in U.S. Survey Feet.
Ties are to 60D nails set in trees.
Bearings are for tie reference purposes only.
Coordinates were derived from RTK GNSS procedures.

CERTIFICATE

I, Nicholas M. Hillmer, do hereby certify that this document and the data contained herein was prepared by me or under my direct supervision and that I am a duly Licensed Land Surveyor under the laws of the State of Wisconsin.

Dated this 30th day of May, 2013



Nicholas M. Hillmer, P.L.S. 2909
Anderson Engineering of Minnesota, LLC.

CERTIFIED LAND CORNER

History of corner established since Original Government Survey

The 1940's McCoy boundary notes show a corner at this location.

Description of evidence found

On September 25th, 2012, Anderson Engineering of Minnesota located the McCoy monument, a 4 inch U.S. Army Corps of Engineers survey control mark disk set in concrete 0.4 feet above grade. The monument is accepted as the best available evidence.

No. _____

Description of corner and witness monuments, references and accessories used to perpetuate the original or re-established location of this corner:

Witnesses to corner location:

Nick Hillmer
Josh Oslund
Dan Greenwald

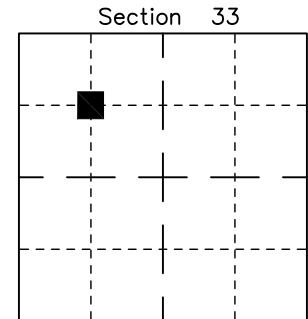
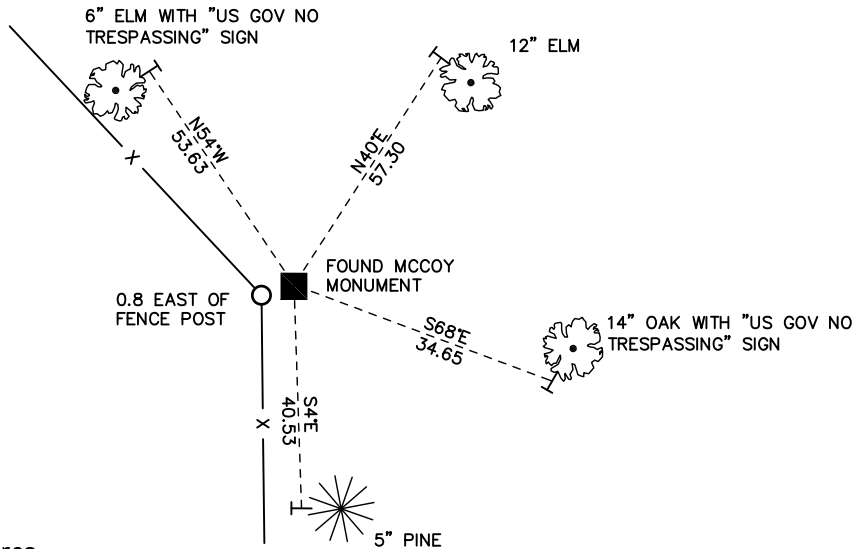
MONROE COUNTY
 COORDINATE SYSTEM
NAD 1983 (2007)

MCCOY MONUMENT
 Northing (Y) 367243.20
 Easting (X) 643781.13

Base Station - 22 182W
 Northing (Y) 408053.25
 Easting (X) 679287.00



All distances are shown in U.S. Survey Feet.
 Ties are to 60D nails set in trees.
 Bearings are for tie reference purposes only.
 Coordinates were derived from RTK GNSS procedures.

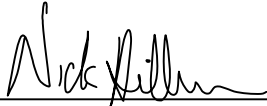


■ = LOCATION CORNER
 Corner I.D. _____
 T 17 N R 3 W
 Town of Angelo
 Monroe County, WI.

CERTIFICATE

I, Nicholas M. Hillmer, do hereby certify that this document and the data contained herein was prepared by me or under my direct supervision and that I am a duly Licensed Land Surveyor under the laws of the State of Wisconsin.

Dated this 23rd day of May, 2013



Nicholas M. Hillmer, P.L.S. 2909
Anderson Engineering of Minnesota, LLC.

CERTIFIED LAND CORNER

History of corner established since Original Government Survey

The 1940's McCoy boundary notes show no monument was set at this location.

Description of evidence found

On April 24th, 2013, Anderson Engineering of Minnesota set a 30 inch Berntsen aluminum dig monument with a 3 1/4 inch aluminum cap, stamped "FORT MCCOY BOUNDARY" "2013" "ANDERSON ENG. OF MN". The monument is set at a slight bend in the fence line to reflect language in an ambiguous road deed to the north.

No. _____
[]

Description of corner and witness monuments, references and accessories used to perpetuate the original or re-established location of this corner:

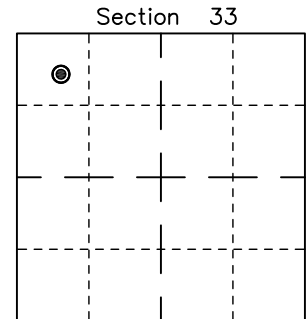
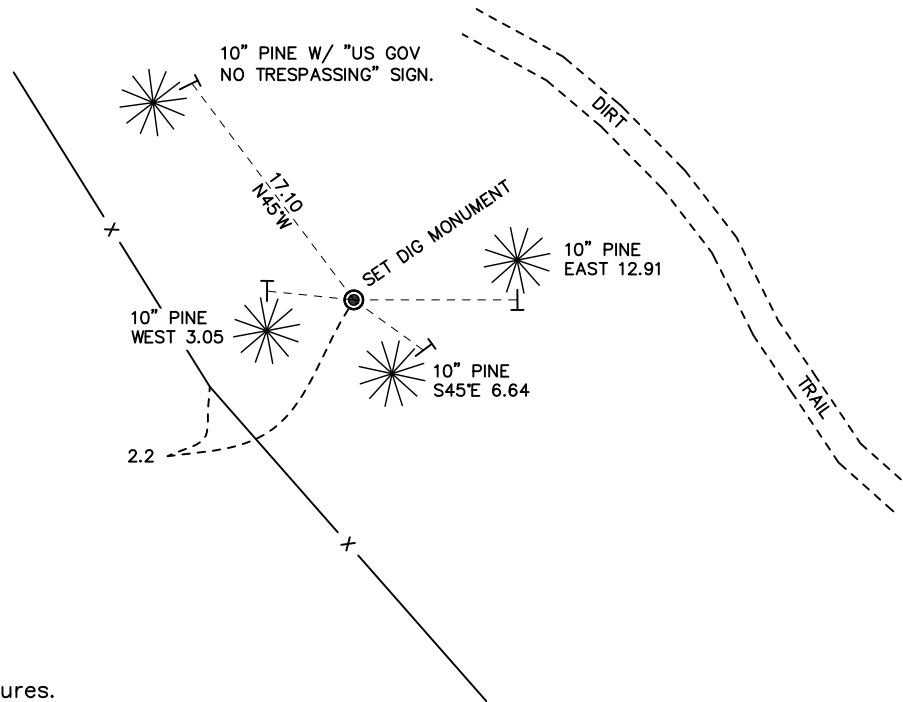
Witnesses to corner location:

Nick Hillmer
Josh Oslund
Dan Greenwald

MONROE COUNTY
COORDINATE SYSTEM
NAD 1983 (2007)

MCCOY DIG MONUMENT
Northing (Y) 367676.30
Easting (X) 643315.60

Base Station - 22 182W
Northing (Y) 408053.25
Easting (X) 679287.00



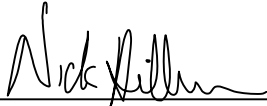
Section 33
● = LOCATION CORNER
Corner I.D. _____
T 17 N R 3 W
Town of Angelo
Monroe County, WI.

All distances are shown in U.S. Survey Feet.
Ties are to 60D nails.
Bearings are for tie reference purposes only.
Coordinates were derived from RTK GNSS procedures.

CERTIFICATE

I, Nicholas M. Hillmer, do hereby certify that this document and the data contained herein was prepared by me or under my direct supervision and that I am a duly Licensed Land Surveyor under the laws of the State of Wisconsin.

Dated this 23rd day of May, 2013



Nicholas M. Hillmer, P.L.S. 2909
Anderson Engineering of Minnesota, LLC.

CERTIFIED LAND CORNER

History of corner established since Original Government Survey

The 1940's McCoy boundary notes show no monument was set at this location.

Description of evidence found

On April 24th, 2013, Anderson Engineering of Minnesota set a 30 inch Berntsen aluminum dig monument with a 3 1/4 inch aluminum cap, stamped "FORT MCCOY BOUNDARY" "2013" "ANDERSON ENG. OF MN". The monument is set at a slight bend in the fence line to reflect language in an ambiguous road deed.

No. _____

Description of corner and witness monuments, references and accessories used to perpetuate the original or re-established location of this corner:

Witnesses to corner location:

Nick Hillmer
Josh Oslund
Dan Greenwald

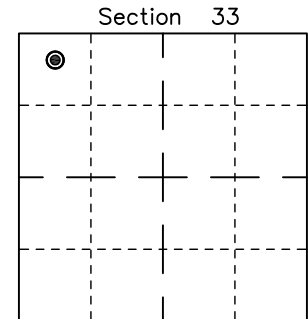
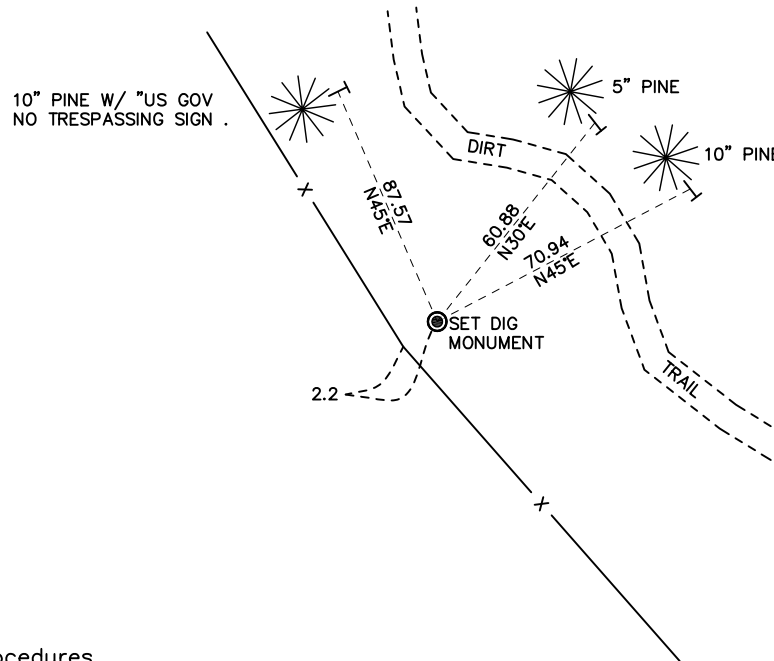
MONROE COUNTY
 COORDINATE SYSTEM
 NAD 1983 (2007)

MCCOY DIG MONUMENT
 Northing (Y) 367917.98
 Easting (X) 643115.11

Base Station - 22 182W
 Northing (Y) 408053.25
 Easting (X) 679287.00



All distances are shown in U.S. Survey Feet.
 Ties are to 60D nails.
 Bearings are for tie reference purposes only.
 Coordinates were derived from RTK GNSS procedures.

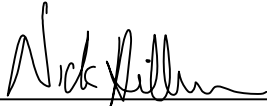


⊙ = LOCATION CORNER
 Corner I.D. _____
 T 17 N R 3 W
 Town of Angelo
 Monroe County, WI.

CERTIFICATE

I, Nicholas M. Hillmer, do hereby certify that this document and the data contained herein was prepared by me or under my direct supervision and that I am a duly Licensed Land Surveyor under the laws of the State of Wisconsin.

Dated this 23rd day of May, 2013



Nicholas M. Hillmer, P.L.S. 2909
Anderson Engineering of Minnesota, LLC.

CERTIFIED LAND CORNER

History of corner established since Original Government Survey

The 1940's McCoy boundary notes show a corner at this location.

Description of evidence found

On September 13th, 2012, Anderson Engineering of Minnesota located the McCoy monument, a 4 inch U.S. Army Corps of Engineers survey control mark disk set in concrete 0.3 feet above grade. The monument is 0.5 feet northeast of a 6 inch wood fence post corner. The fence runs west and southeast from the corner. The monument is accepted as the best available evidence.

No. _____

Description of corner and witness monuments, references and accessories used to perpetuate the original or re-established location of this corner:

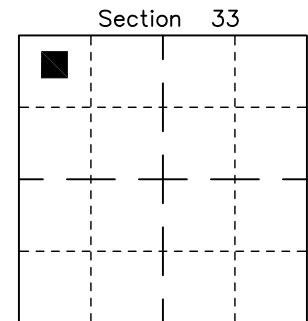
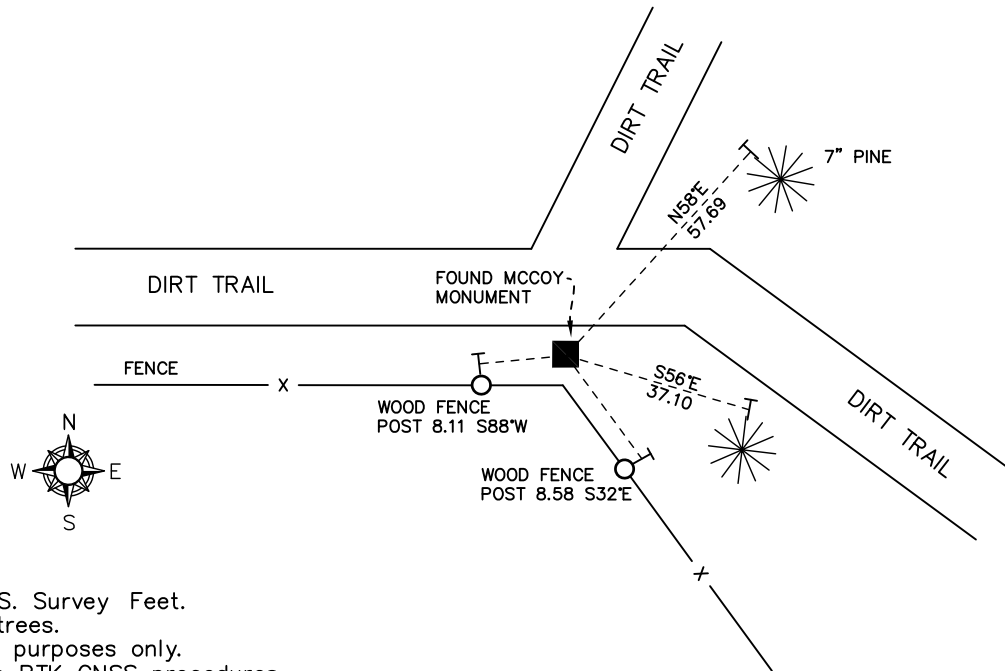
Witnesses to corner location:

Nick Hillmer
Josh Oslund
Dan Greenwald

MONROE COUNTY
 COORDINATE SYSTEM
 NAD 1983 (2007)

MCCOY MONUMENT
 Northing (Y) 368192.98
 Easting (X) 642894.04

Base Station - 22 182W
 Northing (Y) 408053.25
 Easting (X) 679287.00



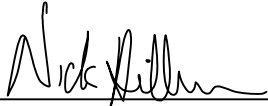
■ = LOCATION CORNER
 Corner I.D. _____
 T 17 N R 3 W
 Town of Angelo
 Monroe County, WI.

All distances are shown in U.S. Survey Feet.
 Ties are to 60D nails set in trees.
 Bearings are for tie reference purposes only.
 Coordinates were derived from RTK GNSS procedures.

CERTIFICATE

I, Nicholas M. Hillmer, do hereby certify that this document and the data contained herein was prepared by me or under my direct supervision and that I am a duly Licensed Land Surveyor under the laws of the State of Wisconsin.

Dated this 23rd day of May, 2013



Nicholas M. Hillmer, P.L.S. 2909
Anderson Engineering of Minnesota, LLC.

CERTIFIED LAND CORNER

History of corner established since Original Government Survey

The 1940's McCoy boundary notes show a corner at this location.

Description of evidence found

On September 13th, 2012, Anderson Engineering of Minnesota located the McCoy monument, a 4 inch U.S. Army Corps of Engineers survey control mark disk set in concrete 0.4 feet below grade. The monument is 1.9 feet northeast of a fence corner. The fence runs south and east from the corner. The monument is accepted as the best available evidence.

No. _____

Description of corner and witness monuments, references and accessories used to perpetuate the original or re-established location of this corner:

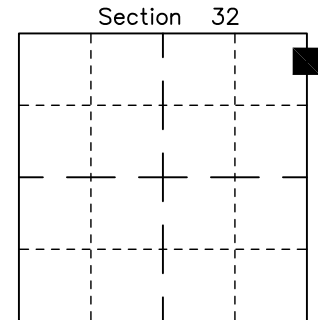
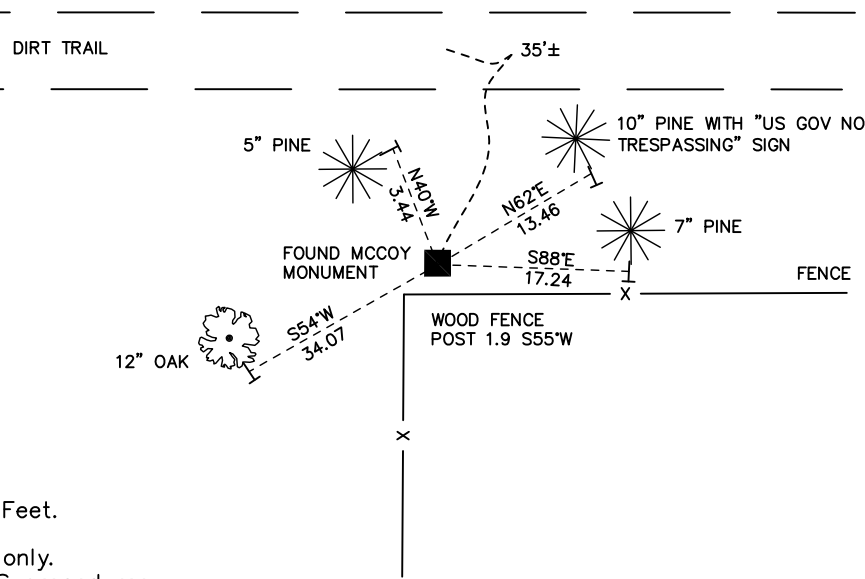
Witnesses to corner location:

Nick Hillmer
Josh Oslund
Dan Greenwald

MONROE COUNTY
 COORDINATE SYSTEM
 NAD 1983 (2007)

MCCOY MONUMENT
 Northing (Y) 368202.35
 Easting (X) 642465.31

Base Station - 22 182W
 Northing (Y) 408053.25
 Easting (X) 679287.00



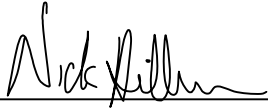
■ = LOCATION CORNER
 Corner I.D. _____
 T 17 N R 3 W
 Town of Angelo
 Monroe County, WI.

All distances are shown in U.S. Survey Feet.
 Ties are to 60D nails set in trees.
 Bearings are for tie reference purposes only.
 Coordinates were derived from RTK GNSS procedures.

CERTIFICATE

I, Nicholas M. Hillmer, do hereby certify that this document and the data contained herein was prepared by me or under my direct supervision and that I am a duly Licensed Land Surveyor under the laws of the State of Wisconsin.

Dated this 23rd day of May, 2013



Nicholas M. Hillmer, P.L.S. 2909
Anderson Engineering of Minnesota, LLC.

CERTIFIED LAND CORNER

History of corner established since Original Government Survey

The 1940's McCoy boundary notes show a corner at this location.

Description of evidence found

On September 25th, 2012, Anderson Engineering of Minnesota located the McCoy monument, a 4 inch U.S. Army Corps of Engineers survey control mark disk set in concrete 1.3 feet above grade. The monument is 1.2 feet northwest of a 6 inch wood fence post corner. The fence runs north and west from the corner. The monument is accepted as the best available evidence.

No. 21703323000

Description of corner and witness monuments, references and accessories used to perpetuate the original or re-established location of this corner:

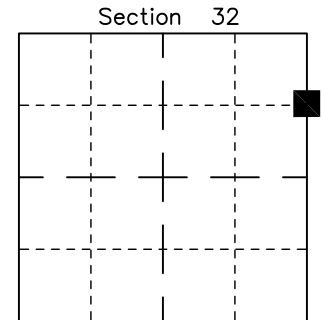
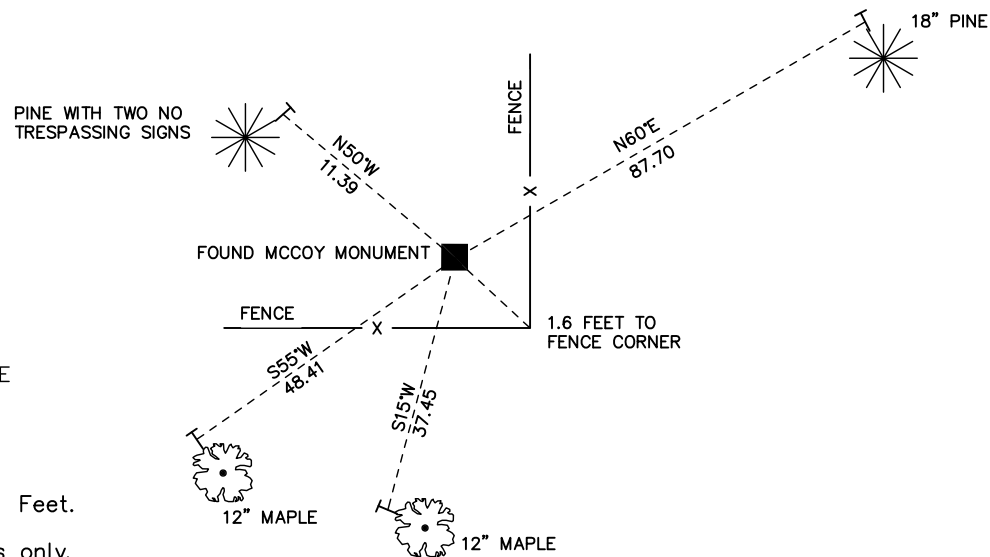
Witnesses to corner location:

Nick Hillmer
Josh Oslund
Dan Greenwald

MONROE COUNTY
COORDINATE SYSTEM
NAD 1983 (2007)

MCCOY MONUMENT
Northing (Y) 367251.46
Easting (X) 642461.11

Base Station - 22 182W
Northing (Y) 408053.25
Easting (X) 679287.00



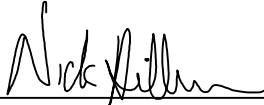
■ = LOCATION CORNER
Corner I.D. N 1/16 32
T 17 N R 3 W
Town of Angelo
Monroe County, WI.

All distances are shown in U.S. Survey Feet.
Ties are to 60D nails set in trees.
Bearings are for tie reference purposes only.
Coordinates were derived from RTK GNSS procedures.

CERTIFICATE

I, Nicholas M. Hillmer, do hereby certify that this document and the data contained herein was prepared by me or under my direct supervision and that I am a duly Licensed Land Surveyor under the laws of the State of Wisconsin.

Dated this 23rd day of May, 2013



Nicholas M. Hillmer, P.L.S. 2909
Anderson Engineering of Minnesota, LLC.

CERTIFIED LAND CORNER

History of corner established since Original Government Survey

No previous history. This corner was not part of original McCoy survey.

Description of evidence found

On May 6th, 2013, Anderson Engineering of Minnesota set a 30 inch Berntsen aluminum dig monument with a 3 1/4 inch aluminum cap, stamped "FORT MCCOY BOUNDARY" "2013" "ANDERSON ENG. OF MN". The monument is set at the intersection of the south line of the Northwest Quarter of the Northeast Quarter and the east right-of-way of Wisconsin State Highway No. 71.

No. _____

Description of corner and witness monuments, references and accessories used to perpetuate the original or re-established location of this corner:

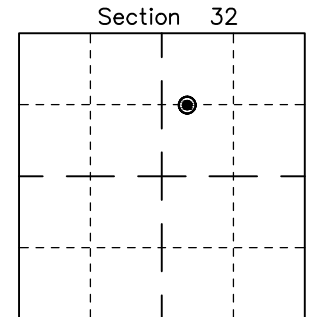
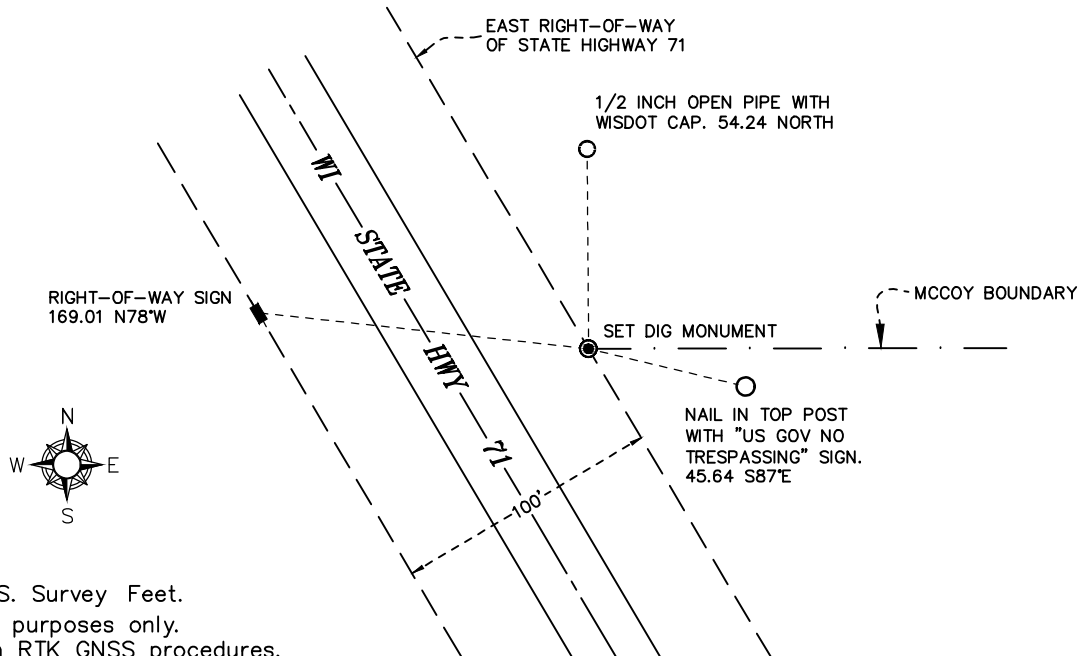
Witnesses to corner location:

Nick Hillmer
Josh Oslund
Dan Greenwald

MONROE COUNTY
 COORDINATE SYSTEM
 NAD 1983 (2007)

MCCOY DIG MONUMENT
 Northing (Y) 367263.20
 Easting (X) 640351.32

Base Station - 22 182W
 Northing (Y) 408053.25
 Easting (X) 679287.00



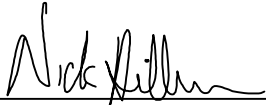
● = LOCATION CORNER
 Corner I.D. _____
 T 17 N R 3 W
 Town of Angelo
 Monroe County, WI.

All distances are shown in U.S. Survey Feet.
 Bearings are for tie reference purposes only.
 Coordinates were derived from RTK GNSS procedures.

CERTIFICATE

I, Nicholas M. Hillmer, do hereby certify that this document and the data contained herein was prepared by me or under my direct supervision and that I am a duly Licensed Land Surveyor under the laws of the State of Wisconsin.

Dated this 23rd day of May, 2013



Nicholas M. Hillmer, P.L.S. 2909
Anderson Engineering of Minnesota, LLC.

CERTIFIED LAND CORNER

History of corner established since Original Government Survey

No previous history. This corner was not part of original McCoy survey.

Description of evidence found

The position of the boundary corner falls in Valley Creek. On May 6th, 2013, Anderson Engineering of Minnesota set two 3/4 inch aluminum drive rods, 6 feet long with a 3 1/4 inch aluminum cap, stamped "FORT MCCOY BOUNDARY" "2013" "ANDERSON ENG. OF MN" as witness corners to the boundary corner. One is set 150 feet north of the corner on the north-south quarter line. The other is set 100 feet southeasterly on the east right-of-way of Wisconsin State Highway Number 71.

No. _____

Description of corner and witness monuments, references and accessories used to perpetuate the original or re-established location of this corner:

Witnesses to corner location:

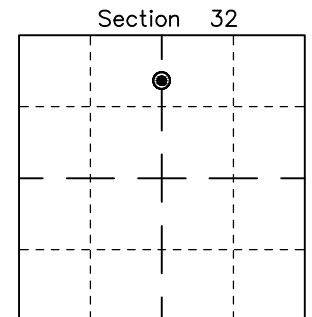
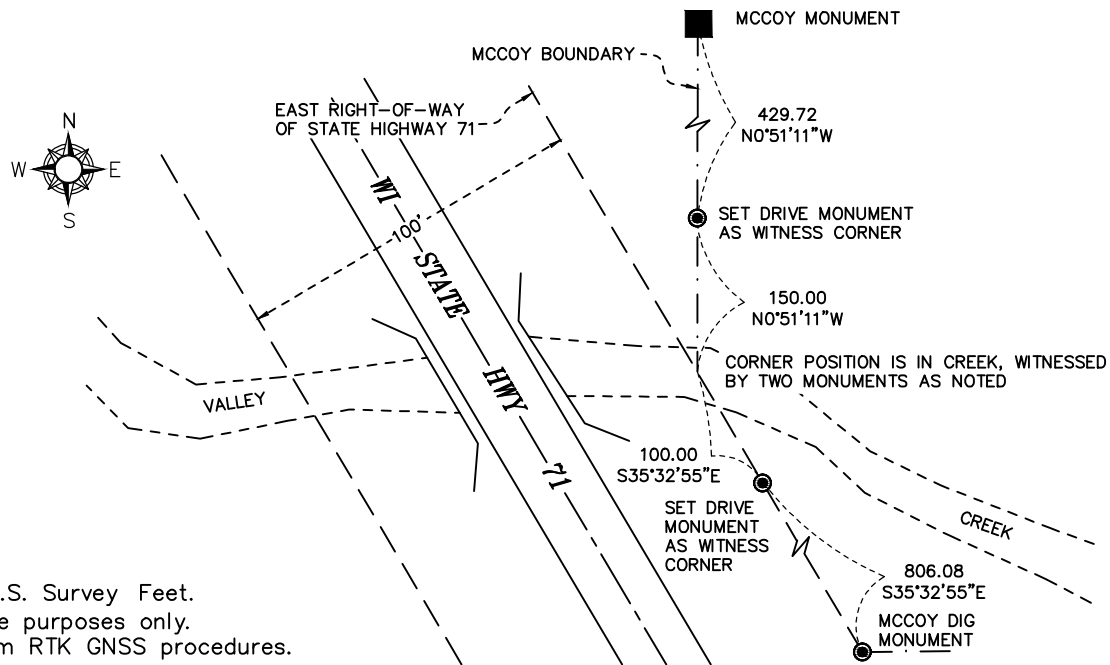
Nick Hillmer
Josh Oslund
Dan Greenwald

MONROE COUNTY
 COORDINATE SYSTEM
 NAD 1983 (2007)

WITNESSED POSITION
 Northing (Y) 368000.41
 Easting (X) 639824.53

Base Station - 22 182W
 Northing (Y) 408053.25
 Easting (X) 679287.00

All distances are shown in U.S. Survey Feet.
 Bearings are for tie reference purposes only.
 Coordinates were derived from RTK GNSS procedures.

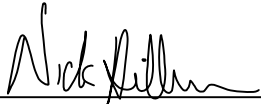


● = LOCATION CORNER
 Corner I.D. _____
 T 17 N R 3 W
 Town of Angelo
 Monroe County, WI.

CERTIFICATE

I, Nicholas M. Hillmer, do hereby certify that this document and the data contained herein was prepared by me or under my direct supervision and that I am a duly Licensed Land Surveyor under the laws of the State of Wisconsin.

Dated this 23rd day of May, 2013



Nicholas M. Hillmer, P.L.S. 2909
Anderson Engineering of Minnesota, LLC.

CERTIFIED LAND CORNER

History of corner established since Original Government Survey

Fred Holden set a 3/4 inch rod here in April of 1902. The 1940's McCoy boundary notes show a corner at this location. In May of 1981 Harley Sime found and accepted the McCoy boundary marker as the corner.

Description of evidence found

On September 13th, 2012, Anderson Engineering of Minnesota located the McCoy monument, a 4 inch U.S. Army Corps of Engineers survey control mark disk set in concrete 0.3 feet above grade and 0.7 feet northwest of a 4 inch square wood witness post with a survey marker sign.

No. _____
21703290020

Description of corner and witness monuments, references and accessories used to perpetuate the original or re-established location of this corner:

Witnesses to corner location:

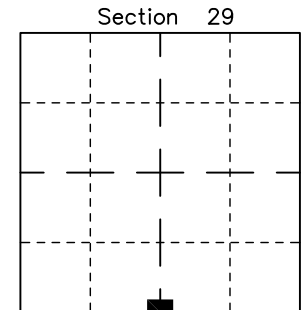
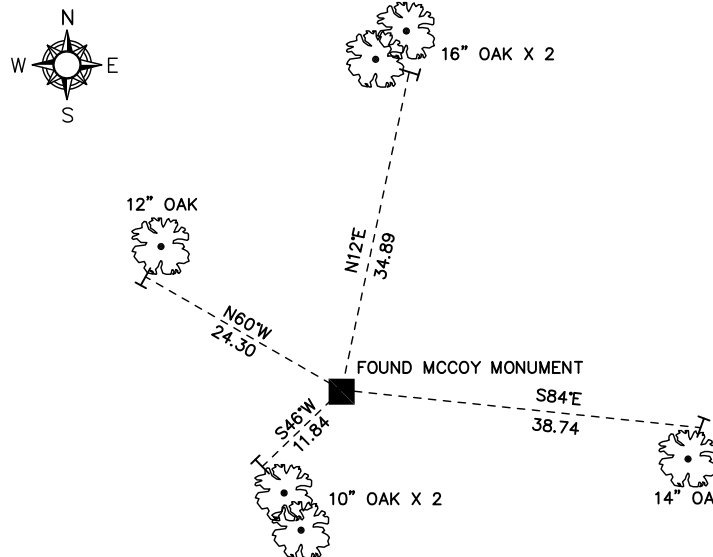
Nick Hillmer
Josh Oslund
Dan Greenwald

MONROE COUNTY
COORDINATE SYSTEM
NAD 1983 (2007)

MCCOY MONUMENT
Northing (Y) 368580.07
Easting (X) 639815.90

Base Station – 22 182W
Northing (Y) 408053.25
Easting (X) 679287.00

All distances are shown in U.S. Survey Feet.
Ties are to 60D nails set in trees.
Bearings are for tie reference purposes only.
Coordinates were derived from RTK GNSS procedures.

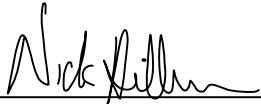


■ = LOCATION CORNER
Corner I.D. S 1/4 29
T 17 N R 3 W
Town of Angelo
Monroe County, WI.

CERTIFICATE

I, Nicholas M. Hillmer, do hereby certify that this document and the data contained herein was prepared by me or under my direct supervision and that I am a duly Licensed Land Surveyor under the laws of the State of Wisconsin.

Dated this 23rd day of May, 2013



Nicholas M. Hillmer, P.L.S. 2909
Anderson Engineering of Minnesota, LLC.

CERTIFIED LAND CORNER

History of corner established since Original Government Survey

No previous history. This corner was not part of original McCoy survey.

Description of evidence found

On May 22, 2013, Anderson Engineering of Minnesota set a 30 inch Berntsen aluminum dig monument with a 3 1/4 inch aluminum cap, stamped "FORT MCCOY BOUNDARY" "2013" "ANDERSON ENG. OF MN". The monument is set at the intersection of the south line of the Southeast Quarter of the Southwest Quarter and the east right-of-way of Wisconsin State Highway No. 71.

No. _____

Description of corner and witness monuments, references and accessories used to perpetuate the original or re-established location of this corner:

Witnesses to corner location:

Nick Hillmer
Josh Oslund
Dan Greenwald

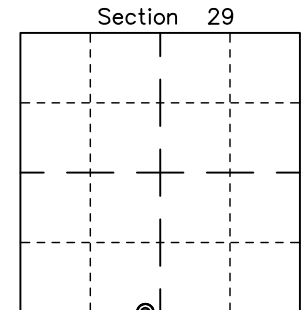
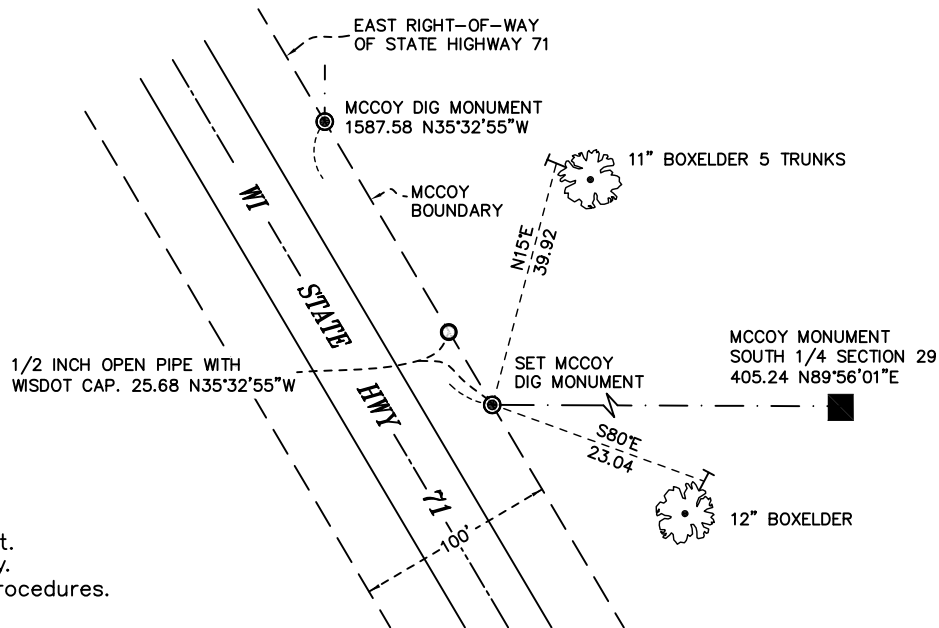
MONROE COUNTY
 COORDINATE SYSTEM
 NAD 1983 (2007)



MCCOY DIG MONUMENT
 Northing (Y) 368579.60
 Easting (X) 639410.65

Base Station - 22 182W
 Northing (Y) 408053.25
 Easting (X) 679287.00

All distances are shown in U.S. Survey Feet.
 Bearings are for tie reference purposes only.
 Coordinates were derived from RTK GNSS procedures.

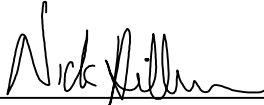


● = LOCATION CORNER
 Corner I.D. _____
 T 17 N R 3 W
 Town of Angelo
 Monroe County, WI.

CERTIFICATE

I, Nicholas M. Hillmer, do hereby certify that this document and the data contained herein was prepared by me or under my direct supervision and that I am a duly Licensed Land Surveyor under the laws of the State of Wisconsin.

Dated this 23rd day of May, 2013



Nicholas M. Hillmer, P.L.S. 2909
Anderson Engineering of Minnesota, LLC.

CERTIFIED LAND CORNER

History of corner established since Original Government Survey

No previous history. This corner was not part of original McCoy survey.

No. _____

Description of evidence found

On May 22, 2013, Anderson Engineering of Minnesota set a 30 inch Berntsen aluminum dig monument with a 3 1/4 inch aluminum cap, stamped "FORT MCCOY BOUNDARY" "2013" "ANDERSON ENG. OF MN". The monument is set at the intersection of the west line of the Southeast Quarter of the Southwest Quarter and the east right-of-way of Wisconsin State Highway No. 71.

Description of corner and witness monuments, references and accessories used to perpetuate the original or re-established location of this corner:

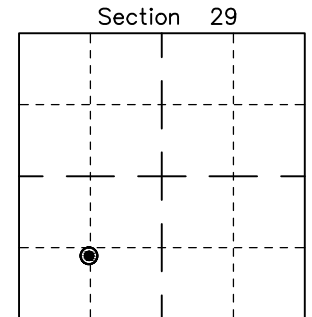
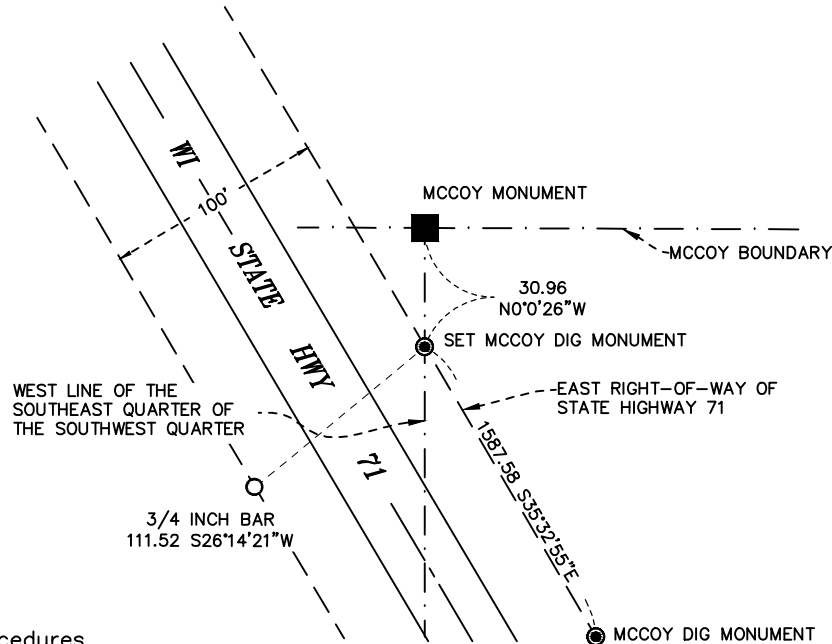
Witnesses to corner location:

Nick Hillmer
Josh Oslund
Dan Greenwald

MONROE COUNTY
COORDINATE SYSTEM
NAD 1983 (2007)

MCCOY DIG MONUMENT
Northing (Y) 369871.29
Easting (X) 638487.64

Base Station - 22 182W
Northing (Y) 408053.25
Easting (X) 679287.00



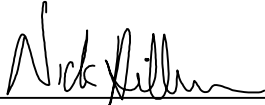
● = LOCATION CORNER
Corner I.D. _____
T 17 N R 3 W
Town of Angelo
Monroe County, WI.

All distances are shown in U.S. Survey Feet.
Bearings are for tie reference purposes only.
Coordinates were derived from RTK GNSS procedures.

CERTIFICATE

I, Nicholas M. Hillmer, do hereby certify that this document and the data contained herein was prepared by me or under my direct supervision and that I am a duly Licensed Land Surveyor under the laws of the State of Wisconsin.

Dated this 23rd day of May, 2013



Nicholas M. Hillmer, P.L.S. 2909
Anderson Engineering of Minnesota, LLC.

CERTIFIED LAND CORNER

History of corner established since Original Government Survey

The 1940's McCoy boundary notes show a corner at this location.

Description of evidence found

On December 18th, 2012, Anderson Engineering of Minnesota located the McCoy monument, a 4 inch U.S. Army Corps of Engineers survey control mark disk set in concrete 0.9 feet above grade. The monument is accepted as the best available evidence.

No. 21703291030

Description of corner and witness monuments, references and EASTERLY RIGHT-OF-WAY OF STATE HIGHWAY 71 perpetuate the original or re-established location of this corner:

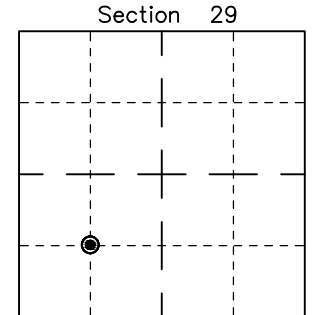
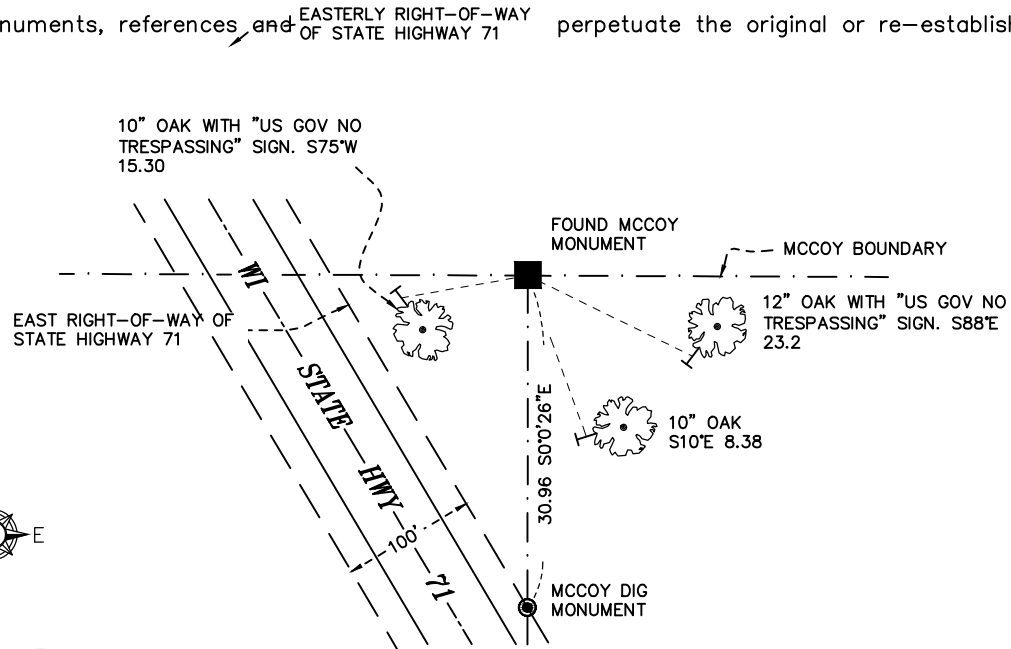
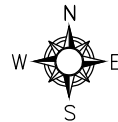
Witnesses to corner location:

Nick Hillmer
Josh Oslund
Dan Greenwald

MONROE COUNTY
COORDINATE SYSTEM
NAD 1983 (2007)

MCCOY MONUMENT
Northing (Y) 369902.25
Easting (X) 638487.64

Base Station - 22 182W
Northing (Y) 408053.25
Easting (X) 679287.00



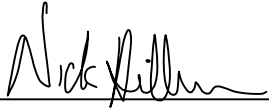
● = LOCATION CORNER
Corner I.D. SW 1/16 29
T 17 N R 3 W
Town of Angelo
Monroe County, WI.

All distances are shown in U.S. Survey Feet.
Bearings are for tie reference purposes only.
Coordinates were derived from RTK GNSS procedures.

CERTIFICATE

I, Nicholas M. Hillmer, do hereby certify that this document and the data contained herein was prepared by me or under my direct supervision and that I am a duly Licensed Land Surveyor under the laws of the State of Wisconsin.

Dated this 23rd day of May, 2013



Nicholas M. Hillmer, P.L.S. 2909
Anderson Engineering of Minnesota, LLC.

CERTIFIED LAND CORNER

No. 21703291020

History of corner established since Original Government Survey

The 1940's McCoy boundary notes show a corner at this location. The section breakdown recorded by Gary Dechant dated October 23, 1986, shows the Fort McCoy monument was not accepted.

Description of evidence found

On September 13th, 2012, Anderson Engineering of Minnesota located the McCoy monument, a 4 inch U.S. Army Corps of Engineers survey control mark set in concrete 0.2 feet below grade near the corners location. On April 23rd, 2013, Anderson Engineering of Minnesota set a 30 inch Berntsen aluminum dig monument with a 3 1/4 inch aluminum cap, stamped "FORT MCCOY BOUNDARY" "2013" "ANDERSON ENG. OF MN". The monument was set midway online between the center of Section 29 and the S 1/4 corner of Section 29 as depicted on Dechant's 1986 section breakdown.

Description of corner and witness monuments, references and accessories used to perpetuate the original or re-established location of this corner:

Witnesses to corner location:

Nick Hillmer
Josh Oslund
Dan Greenwald

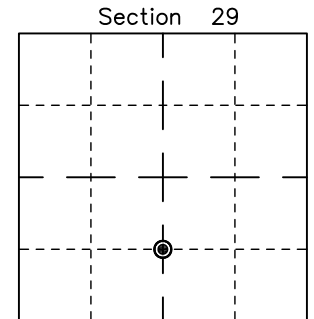
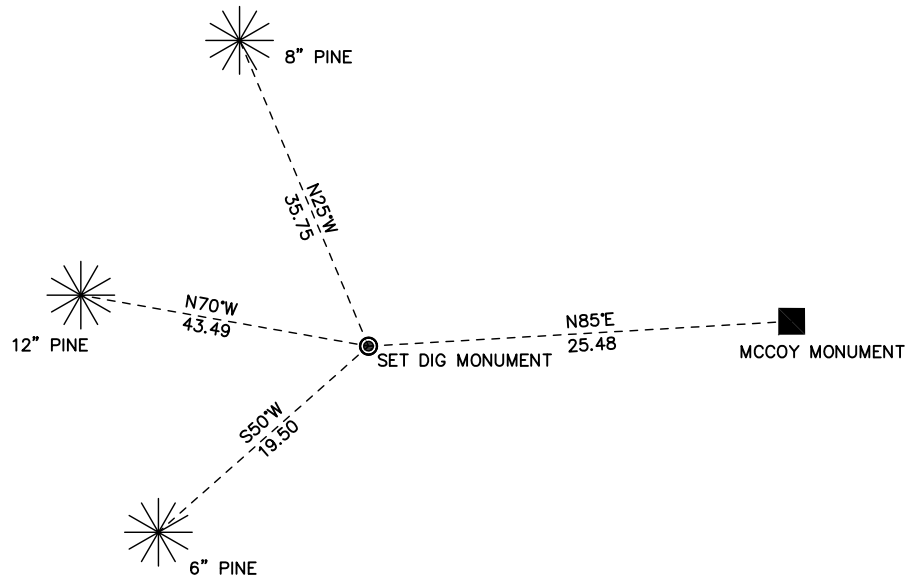


MONROE COUNTY
COORDINATE SYSTEM
NAD 1983 (2007)

MCCOY DIG MONUMENT
Northing (Y) 369898.34
Easting (X) 639811.39

Base Station - 22 182W
Northing (Y) 408053.25
Easting (X) 679287.00

All distances are shown in U.S. Survey Feet.
Ties are to 60D nails set in trees.
Bearings are for tie reference purposes only.
Coordinates were derived from RTK GNSS procedures.

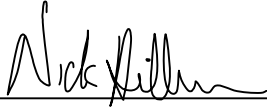


⊙ = LOCATION CORNER
Corner I.D. CS 1/16 29
T 17 N R 3 W
Town of Angelo
Monroe County, WI.

CERTIFICATE

I, Nicholas M. Hillmer, do hereby certify that this document and the data contained herein was prepared by me or under my direct supervision and that I am a duly Licensed Land Surveyor under the laws of the State of Wisconsin.

Dated this 23rd day of May, 2013



Nicholas M. Hillmer, P.L.S. 2909
Anderson Engineering of Minnesota, LLC.

CERTIFIED LAND CORNER

History of corner established since Original Government Survey

The 1940's McCoy boundary notes show a corner at this location. The recorded section breakdown by Gary Dechant dated October 23, 1986, shows the McCoy marker as the accepted corner.

No. 21703292020

Description of evidence found

On September 13th, 2012, Anderson Engineering of Minnesota located the McCoy monument, a 4 inch U.S Army Corps of Engineers survey control mark disk set in concrete 0.2 feet below grade.

Description of corner and witness monuments, references and accessories used to perpetuate the original or re-established location of this corner:

Witnesses to corner location:

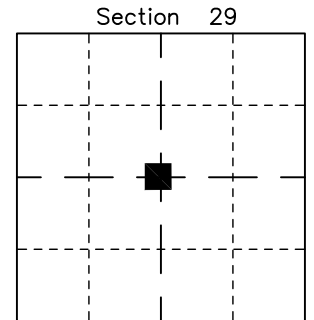
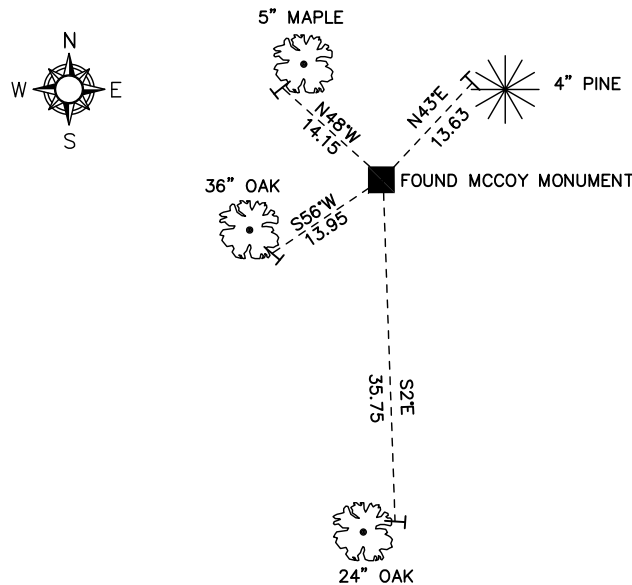
Nick Hillmer
Josh Oslund
Dan Greenwald

MONROE COUNTY
COORDINATE SYSTEM
NAD 1983 (2007)

MCCOY MONUMENT
Northing (Y) 371216.62
Easting (X) 639806.89

Base Station - 22 182W
Northing (Y) 408053.25
Easting (X) 679287.00

All distances are shown in U.S. Survey Feet.
Ties are to 60D nails set in trees.
Bearings are for tie reference purposes only.
Coordinates were derived from RTK GNSS procedures.

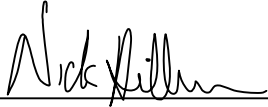


■ = LOCATION CORNER
Corner I.D. C 1/4 29
T 17 N R 3 W
Town of Angelo
Monroe County, WI.

CERTIFICATE

I, Nicholas M. Hillmer, do hereby certify that this document and the data contained herein was prepared by me or under my direct supervision and that I am a duly Licensed Land Surveyor under the laws of the State of Wisconsin.

Dated this 23rd day of May, 2013



Nicholas M. Hillmer, P.L.S. 2909
Anderson Engineering of Minnesota, LLC.

CERTIFIED LAND CORNER

History of corner established since Original Government Survey

The 1940's McCoy boundary notes show a corner at this location. The recorded section breakdown by Gary Dechant dated October 23, 1986, shows the McCoy monument as the accepted corner.

No. 21703292030

Description of evidence found

On September 13th, 2012, Anderson Engineering of Minnesota located the McCoy monument, a 4 inch U.S. Army Corps of Engineers survey control mark disk set in concrete 0.3 feet below grade. The monument is 1.3 feet north-northwest of an old wood fence post with barbed wire. The base of the fence post is grown into a tree.

Description of corner and witness monuments, references and accessories used to perpetuate the original or re-established location of this corner:

Witnesses to corner location:

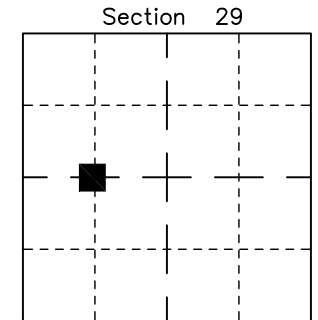
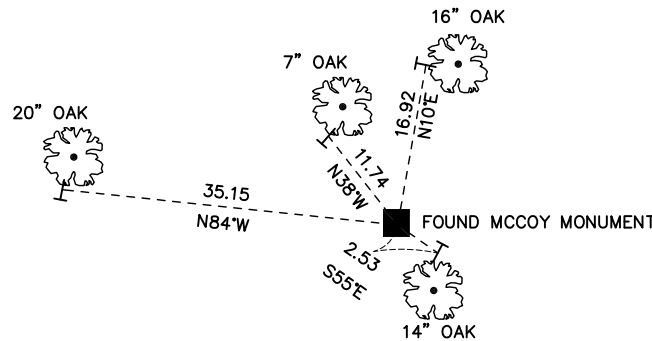
Nick Hillmer
Josh Oslund
Dan Greenwald

MONROE COUNTY
COORDINATE SYSTEM
NAD 1983 (2007)

MCCOY MONUMENT
Northing (Y) 371223.49
Easting (X) 638480.24

Base Station - 22 182W
Northing (Y) 408053.25
Easting (X) 679287.00

All distances are shown in U.S. Survey Feet.
Ties are to 60D nails set in trees.
Bearings are for tie reference purposes only.
Coordinates were derived from RTK GNSS procedures.

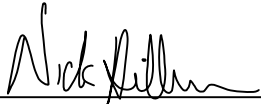


■ = LOCATION CORNER
Corner I.D. CW 1/16 29
T 17 N R 3 W
Town of Angelo
Monroe County, WI.

CERTIFICATE

I, Nicholas M. Hillmer, do hereby certify that this document and the data contained herein was prepared by me or under my direct supervision and that I am a duly Licensed Land Surveyor under the laws of the State of Wisconsin.

Dated this 23rd day of May, 2013



Nicholas M. Hillmer, P.L.S. 2909
Anderson Engineering of Minnesota, LLC.

CERTIFIED LAND CORNER

History of corner established since Original Government Survey

The 1940's McCoy boundary notes show a corner at this location. Gary L. Dechant shows the McCoy monument used for his breakdown of Section 29 in October 1986. In 1994 Garold A. Sime set a 3/4 inch x 24 inch iron bar for the corner while completing a survey of the SE 1/4 of the SW 1/4 of Section 20 of record, Vol. 9 CSM 157. Sime does not note the McCoy monument.

Description of evidence found

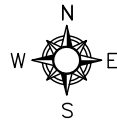
On September 13, 2012, Anderson Engineering of Minnesota located the McCoy monument flush with the ground. Sime's 3/4 inch rod was located as well. The McCoy monument is accepted as the corner.

No. _____
21703200030

Description of corner and witness monuments, references and accessories used to perpetuate the original or re-established location of this corner:

Witnesses to corner location:

Nick Hillmer
Josh Oslund
Dan Greenwald

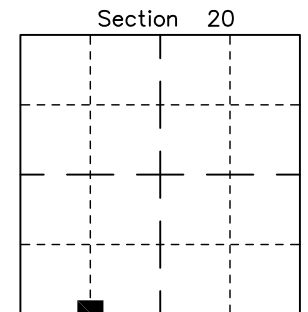
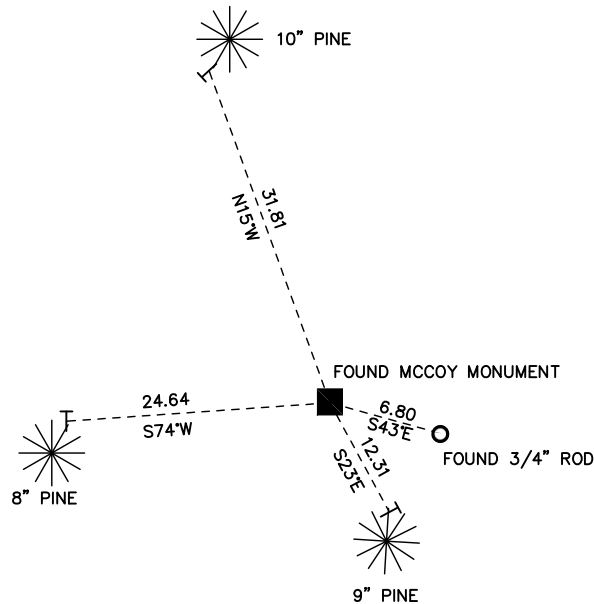


MONROE COUNTY
COORDINATE SYSTEM
NAD 1983 (2007)

MCCOY MONUMENT
Northing (Y) 373855.97
Easting (X) 638478.04

Base Station - 22 182W
Northing (Y) 408053.25
Easting (X) 679287.00

All distances are shown in U.S. Survey Feet.
Ties are to 60D nails set in trees.
Bearings are for tie reference purposes only.
Coordinates were derived from RTK GNSS procedures.

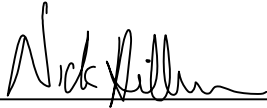


■ = LOCATION CORNER
Corner I.D. W 1/16 20
T 17 N R 3 W
Town of Angelo
Monroe County, WI.

CERTIFICATE

I, Nicholas M. Hillmer, do hereby certify that this document and the data contained herein was prepared by me or under my direct supervision and that I am a duly Licensed Land Surveyor under the laws of the State of Wisconsin.

Dated this 23rd day of May, 2013



Nicholas M. Hillmer, P.L.S. 2909
Anderson Engineering of Minnesota, LLC.

CERTIFIED LAND CORNER

No. 21703200020

History of corner established since Original Government Survey

The 1940's McCoy boundary notes show a corner at this location. In June of 1976 Harley A. Sime found and accepted the McCoy boundary marker as the corner. Sime also set a 3/4 inch iron bar on the east side of the marker for future magnetic detection. The recorded section breakdown by Gary Dechant dated October 23, 1986, shows the McCoy monument as the accepted corner.

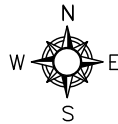
Description of evidence found

On September 12th, 2012, Anderson Engineering of Minnesota located the McCoy monument, a 4 inch U.S. Army Corps of Engineers survey control mark disk set in concrete. The monument is 1.2 feet northwest of a fence post with survey marker sign.

Description of corner and witness monuments, references and accessories used to perpetuate the original or re-established location of this corner:

Witnesses to corner location:

Nick Hillmer
Josh Oslund
Dan Greenwald

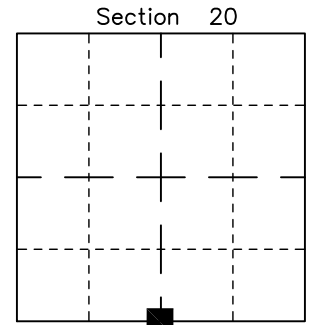
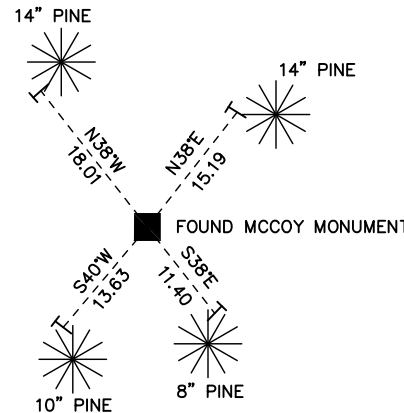


MONROE COUNTY
COORDINATE SYSTEM
NAD 1983 (2007)

MCCOY MONUMENT
Northing (Y) 373847.82
Easting (X) 639819.84

Base Station - 22 182W
Northing (Y) 408053.25
Easting (X) 679287.00

All distances are shown in U.S. Survey Feet.
Ties are to 60D nails set in trees.
Bearings are for tie reference purposes only.
Coordinates were derived from RTK GNSS procedures.

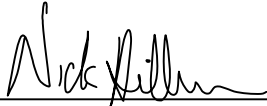


■ = LOCATION CORNER
Corner I.D. S 1/4 20
T 17 N R 3 W
Town of Angelo
Monroe County, WI.

CERTIFICATE

I, Nicholas M. Hillmer, do hereby certify that this document and the data contained herein was prepared by me or under my direct supervision and that I am a duly Licensed Land Surveyor under the laws of the State of Wisconsin.

Dated this 23rd day of May, 2013



Nicholas M. Hillmer, P.L.S. 2909
Anderson Engineering of Minnesota, LLC.

Description of corner and witness monuments, references and accessories used to perpetuate the original or re-established location of this corner:

Witnesses to corner location:

Nick Hillmer
Josh Oslund
Dan Greenwald

MONROE COUNTY
COORDINATE SYSTEM
NAD 1983 (2007)

MCCOY DIG MONUMENT
Northing (Y) 375176.11
Easting (X) 639800.48

Base Station - 22 182W
Northing (Y) 408053.25
Easting (X) 679287.00

All distances are shown in U.S. Survey Feet.
Ties are to 60D nails set in trees.
Bearings are for tie reference purposes only.
Coordinates were derived from RTK GNSS procedures.

CERTIFIED LAND CORNER

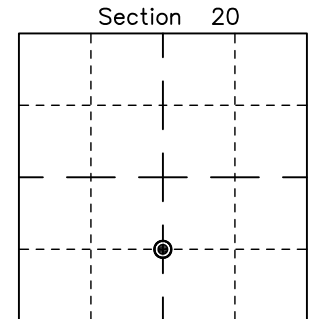
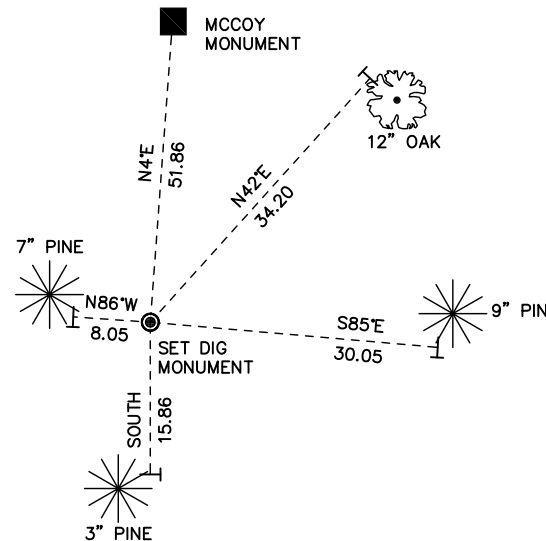
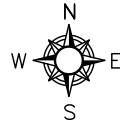
History of corner established since Original Government Survey

The 1940's McCoy boundary notes show a corner at this location. In 1994, Garold A. Sime set a 3/4 inch x 24 inch iron bar for the corner while completing a survey of the SE 1/4 of the SW 1/4 of Section 20 of record, Vol. 9 CSM 157. Sime notes on his survey that the previous McCoy monument is 52 feet north and 4 feet east of his corner. Sime's section breakdown math fits the center of section as being derived by doubling over the direction and distance from the west quarter corner to the CW 1/16 set in 1976.

Description of evidence found

On September 12th, 2012, Anderson Engineering of Minnesota located the 3/4 inch iron bar 0.3 feet below grade as well as the McCoy Monument. On April 23rd, 2013, Anderson Engineering of Minnesota replaced the 3/4 inch iron bar with a 30 inch Berntsen aluminum dig monument with a 3 1/4 inch cap, stamped "FORT MCCOY BOUNDARY" "2013" "ANDERSON ENG. OF MN." The old McCoy monument is now utilized as a witness corner.

No. 21703201020

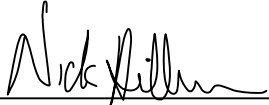


⊙ = LOCATION CORNER
Corner I.D. CS 1/16 20
T 17 N R 3 W
Town of Angelo
Monroe County, WI.

CERTIFICATE

I, Nicholas M. Hillmer, do hereby certify that this document and the data contained herein was prepared by me or under my direct supervision and that I am a duly Licensed Land Surveyor under the laws of the State of Wisconsin.

Dated this 23rd day of May, 2013



Nicholas M. Hillmer, P.L.S. 2909
Anderson Engineering of Minnesota, LLC.

CERTIFIED LAND CORNER

No. 21703201030

History of corner established since Original Government Survey

The 1940's McCoy boundary notes show a corner at this location. In 1994, Garold A. Sime set a 3/4 inch x 24 inch iron bar for the corner while completing a survey of the SE 1/4 of the SW 1/4 of Section 20 of record, Vol. 9 CSM 157. Sime notes on his survey that the previous McCoy monument is 35 feet north and 2 feet east of his corner. Sime's section breakdown math fits the center of section as being derived by doubling over the direction and distance from the W 1/4 corner to his CW 1/16 set in 1976.

Description of evidence found

On September 12th, 2012, Anderson Engineering of Minnesota located the 3/4 inch iron bar 0.4 feet below grade and 46 feet west of the centerline of the trail. The McCoy monument was also located, a 4 inch U.S. Army Corps of Engineers survey control mark disk. On April 23rd, 2013, Anderson Engineering of Minnesota replaced the solid bar with a 3 1/4 inch Berntsen aluminum dig monument with a 3 1/4 inch aluminum cap, stamped "FORT MCCOY BOUNDARY" "2013" "ANDERSON ENG. OF MN." The old McCoy monument is now utilized as a witness corner.

Description of corner and witness monuments, references and accessories used to perpetuate the original or re-established location of this corner:

Witnesses to corner location:

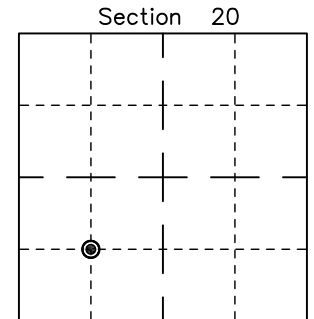
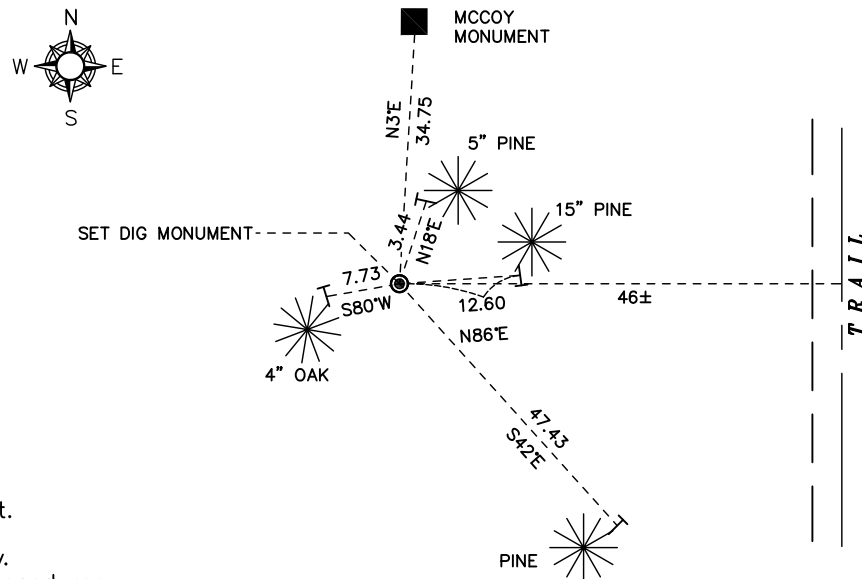
Nick Hillmer
Josh Oslund
Dan Greenwald

MONROE COUNTY
COORDINATE SYSTEM
NAD 1983 (2007)

MCCOY DIG MONUMENT
Northing (Y) 375180.81
Easting (X) 638472.12

Base Station - 22 182W
Northing (Y) 408053.25
Easting (X) 679287.00

All distances are shown in U.S. Survey Feet.
Ties are to 60D nails set in trees.
Bearings are for tie reference purposes only.
Coordinates were derived from RTK GNSS procedures.

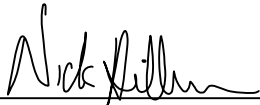


⊙ = LOCATION CORNER
Corner I.D. SW 1/16 20
T 17 N R 3 W
Town of Angelo
Monroe County, WI.

CERTIFICATE

I, Nicholas M. Hillmer, do hereby certify that this document and the data contained herein was prepared by me or under my direct supervision and that I am a duly Licensed Land Surveyor under the laws of the State of Wisconsin.

Dated this 23rd day of May, 2013



Nicholas M. Hillmer, P.L.S. 2909
Anderson Engineering of Minnesota, LLC.

CERTIFIED LAND CORNER

History of corner established since Original Government Survey

The 1940's McCoy boundary notes show a corner at this location. In 1976 Garold A. Sime set a 1 1/4 inch x 30 inch iron bar for this corner while completing a survey for Mike Weber of record, Vol. 8 CSM 163.

Description of evidence found

On September 12th, 2012, Anderson Engineering of Minnesota located the 1 1/4 inch iron bar flush with the ground. Remnants of a down barbed wire fence that run north and west remain. On April 23rd, 2013, Anderson Engineering of MN replaced the iron rod with a 30 inch Berntsen aluminum dig monument with a 3 1/4 aluminum cap, stamped "FORT MCCOY BOUNDARY" "2013" "ANDERSON ENG. OF MN."

No. _____
21703202030

Description of corner and witness monuments, references and accessories used to perpetuate the original or re-established location of this corner:

Witnesses to corner location:

Nick Hillmer
Josh Oslund
Dan Greenwald

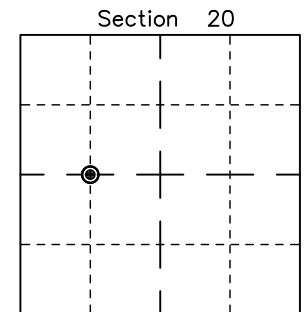
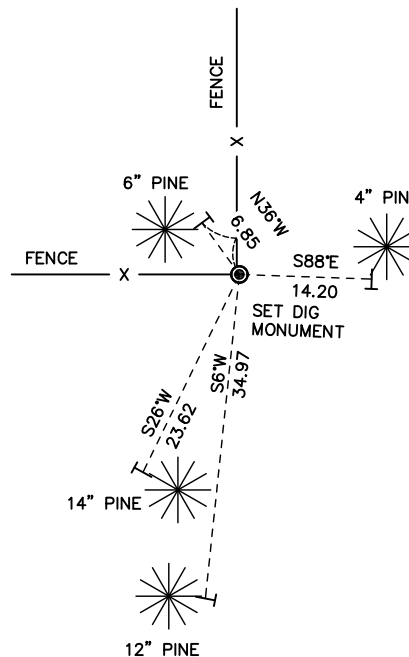
MONROE COUNTY
COORDINATE SYSTEM
NAD 1983 (2007)

MCCOY DIG MONUMENT
Northing (Y) 376510.40
Easting (X) 638461.85

Base Station - 22 182W
Northing (Y) 408053.25
Easting (X) 679287.00



All distances are shown in U.S. Survey Feet.
Ties are to 60D nails set in trees.
Bearings are for tie reference purposes only.
Coordinates were derived from RTK GNSS procedures.

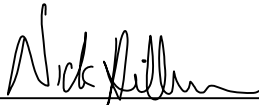


● = LOCATION CORNER
Corner I.D. CW 1/16 20
T 17 N R 3 W
Town of Angelo
Monroe County, WI.

CERTIFICATE

I, Nicholas M. Hillmer, do hereby certify that this document and the data contained herein was prepared by me or under my direct supervision and that I am a duly Licensed Land Surveyor under the laws of the State of Wisconsin.

Dated this 23rd day of May, 2013



Nicholas M. Hillmer, P.L.S. 2909
Anderson Engineering of Minnesota, LLC.

CERTIFIED LAND CORNER

History of corner established since Original Government Survey

The 1940's McCoy boundary notes show a corner at this location.

Description of evidence found

On December 18, 2012, Anderson Engineering of Minnesota located a 1 inch iron rod 8 inches below grade. The iron is in a stand of red pines between the north right-of-way of Interstate 90 and the off ramp. The 1 inch iron rod fits the location of the midpoint between the southwest corner and south quarter corner of Section 17. On April 11, 2013, the 1 inch iron rod was replaced with a 30 inch Berntsen aluminum dig monument with a 3 1/4 inch aluminum cap, stamped "FORT MCCOY BOUNDARY" "2013" "ANDERSON ENG. OF MN."

No. _____
21703170030

Description of corner and witness monuments, references and accessories used to perpetuate the original or re-established location of this corner:

Witnesses to corner location:

Nick Hillmer
Josh Oslund
Dan Greenwald

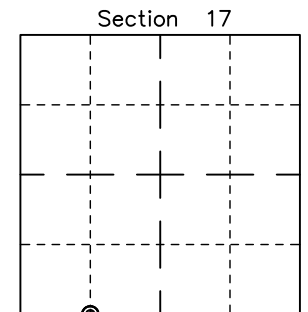
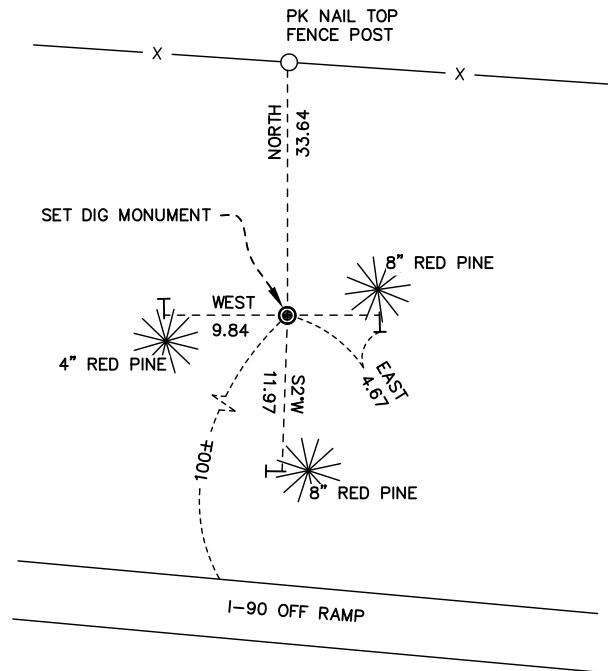
MONROE COUNTY
COORDINATE SYSTEM
NAD 1983 (2007)

MCCOY DIG MONUMENT
Northing (Y) 379138.28
Easting (X) 638413.91

Base Station - 22 182W
Northing (Y) 408053.25
Easting (X) 679287.00



All distances are shown in U.S. Survey Feet.
Ties are to 60D nails set in trees.
Bearings are for tie reference purposes only.
Coordinates were derived from RTK GNSS procedures.

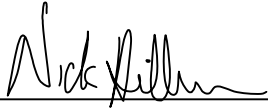


● = LOCATION CORNER
Corner I.D. W 1/16 17
T 17 N R 3 W
Town of Angelo
Monroe County, WI.

CERTIFICATE

I, Nicholas M. Hillmer, do hereby certify that this document and the data contained herein was prepared by me or under my direct supervision and that I am a duly Licensed Land Surveyor under the laws of the State of Wisconsin.

Dated this 23rd day of May, 2013



Nicholas M. Hillmer, P.L.S. 2909
Anderson Engineering of Minnesota, LLC.

CERTIFIED LAND CORNER

History of corner established since Original Government Survey

In April of 1902 Fred Holden shows a 2 inch pipe at this corner. In June of 1976 William Jung found a pipe used in previous surveys, accepted it, and replaced it with a Harrison monument.

No. 21703170020

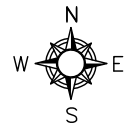
Description of evidence found

On September 12th, 2012, Anderson Engineering of Minnesota located the Harrison monument 0.4 feet below grade and 1 foot south of a metal post with survey marker sign.

Description of corner and witness monuments, references and accessories used to perpetuate the original or re-established location of this corner:

Witnesses to corner location:

Nick Hillmer
Josh Oslund
Dan Greenwald

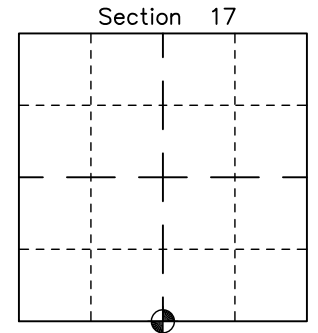
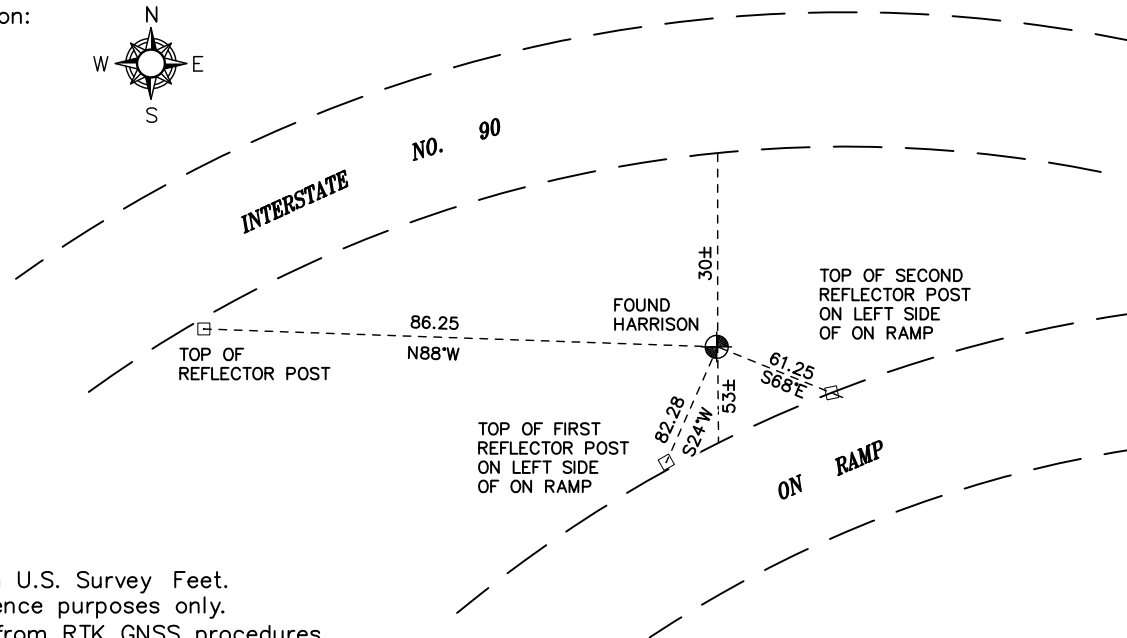


MONROE COUNTY
COORDINATE SYSTEM
NAD 1983 (2007)

HARRISON MONUMENT
Northing (Y) 379129.60
Easting (X) 639743.15

Base Station - 22 182W
Northing (Y) 408053.25
Easting (X) 679287.00

All distances are shown in U.S. Survey Feet.
Bearings are for tie reference purposes only.
Coordinates were derived from RTK GNSS procedures.

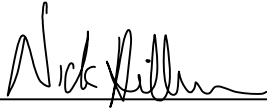


● = LOCATION CORNER
Corner I.D. S 1/4 17
T 17 N R 3 W
Town of Angelo
Monroe County, WI.

CERTIFICATE

I, Nicholas M. Hillmer, do hereby certify that this document and the data contained herein was prepared by me or under my direct supervision and that I am a duly Licensed Land Surveyor under the laws of the State of Wisconsin.

Dated this 23rd day of May, 2013



Nicholas M. Hillmer, P.L.S. 2909
Anderson Engineering of Minnesota, LLC.

CERTIFIED LAND CORNER

History of corner established since Original Government Survey

Fred Holden set a 2 foot piece of railroad rail here in April of 1904. In February of 1993 Bryan Meyer was unable to find the rail. Meyer reestablished the corner on line with the SW corner and S 1/4 corner of Section 17 at Holden's distance +/-.

No. 21703170000

Description of evidence found

On September 10th, 2012, Anderson Engineering of Minnesota located the Harrison monument 0.1 feet below grade.

Description of corner and witness monuments, references and accessories used to perpetuate the original or re-established location of this corner:

Witnesses to corner location:

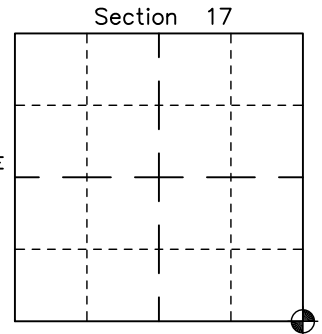
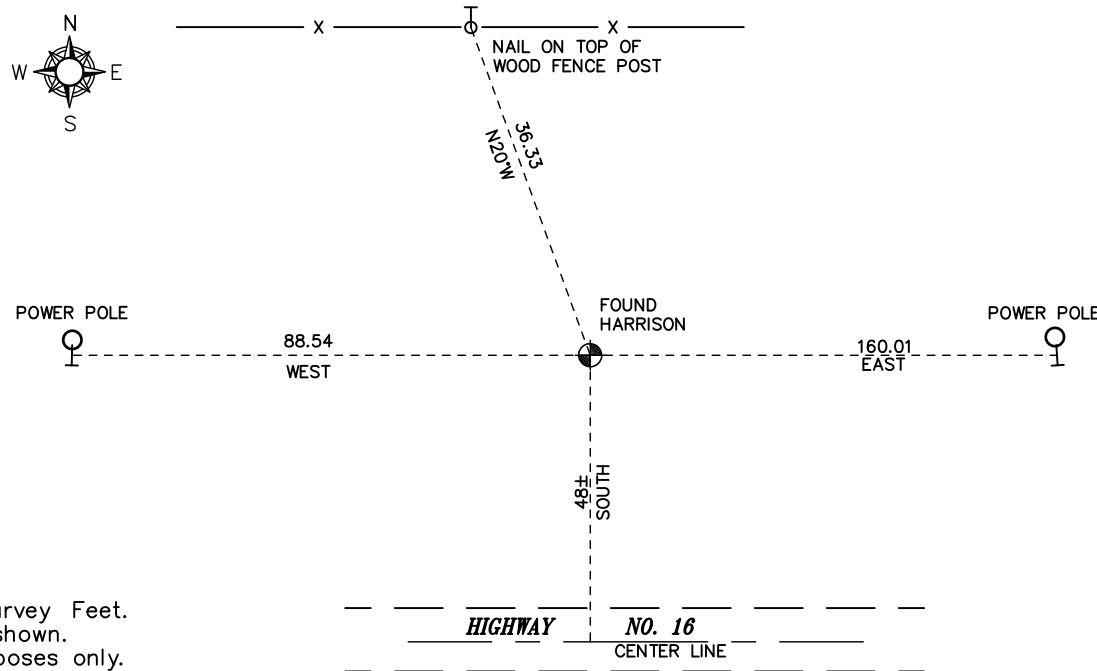
Nick Hillmer
Josh Oslund
Dan Greenwald

MONROE COUNTY
COORDINATE SYSTEM
NAD 1983 (2007)

HARRISON MONUMENT
Northing (Y) 379112.76
Easting (X) 642396.11

Base Station - 22 182W
Northing (Y) 408053.25
Easting (X) 679287.00

All distances are shown in U.S. Survey Feet.
Ties are to 60D nails, except as shown.
Bearings are for tie reference purposes only.
Coordinates were derived from RTK GNSS procedures.

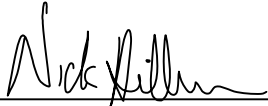


● = LOCATION CORNER
Corner I.D. SE 17
T 17 N R 3 W
Town of Angelo
Monroe County, WI.

CERTIFICATE

I, Nicholas M. Hillmer, do hereby certify that this document and the data contained herein was prepared by me or under my direct supervision and that I am a duly Licensed Land Surveyor under the laws of the State of Wisconsin.

Dated this 23rd day of May, 2013



Nicholas M. Hillmer, P.L.S. 2909
Anderson Engineering of Minnesota, LLC.

CERTIFIED LAND CORNER

History of corner established since Original Government Survey

In 1904 Fred Holden listed a piece of iron sleigh shoe at the corner. The 1940's McCoy boundary notes show a corner at this location. In May of 1980 William Jung found and accepted the McCoy boundary marker as the corner.

No. 21703172000

Description of evidence found

On September 10th, 2012, Anderson Engineering of Minnesota located the McCoy monument, a 4 inch U.S. Army Corps of Engineers survey control mark disk set in concrete 3 feet northwest of a wood fence post at the corner of a barbed wire fence that runs north and west.

Description of corner and witness monuments, references and accessories used to perpetuate the original or re-established location of this corner:

Witnesses to corner location:

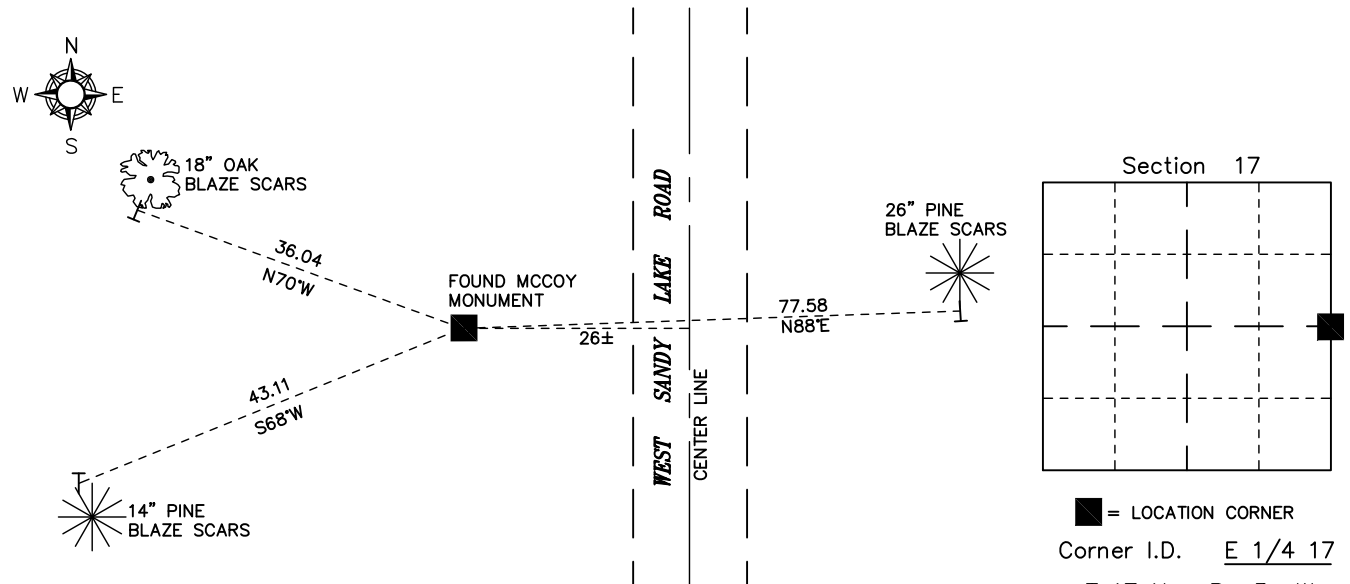
Nick Hillmer
Josh Oslund
Dan Greenwald

MONROE COUNTY
COORDINATE SYSTEM
NAD 1983 (2007)

MCCOY MONUMENT
Northing (Y) 381753.39
Easting (X) 642395.00

Base Station - 22 182W
Northing (Y) 408053.25
Easting (X) 679287.00

All distances are shown in U.S. Survey Feet.
Ties are to 60D nails set in trees.
Bearings are for tie reference purposes only.
Coordinates were derived from RTK GNSS procedures.

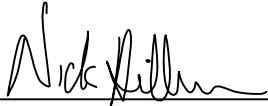


■ = LOCATION CORNER
Corner I.D. E 1/4 17
T 17 N R 3 W
Town of Angelo
Monroe County, WI.

CERTIFICATE

I, Nicholas M. Hillmer, do hereby certify that this document and the data contained herein was prepared by me or under my direct supervision and that I am a duly Licensed Land Surveyor under the laws of the State of Wisconsin.

Dated this 23rd day of May, 2013



Nicholas M. Hillmer, P.L.S. 2909
Anderson Engineering of Minnesota, LLC.

CERTIFIED LAND CORNER

History of corner established since Original Government Survey

In April of 1907 Fred Holden set an iron stake here. In 1936 David Blencoe set a Ford drive shaft at this corner. The 1940's McCoy boundary notes show a corner at this location. In April of 1980 William Jung found the McCoy boundary marker and accepted it as the corner.

No. 21703080000

Description of evidence found

On September 10, 2012, Anderson Engineering of Minnesota located the McCoy monument, a 4 inch U.S. Army Corps of Engineers survey control mark disk set in concrete 0.3 feet below grade and 1.5 feet north of a white wood post.

Description of corner and witness monuments, references and accessories used to perpetuate the original or re-established location of this corner:

Witnesses to corner location:

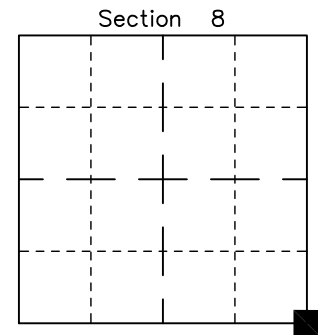
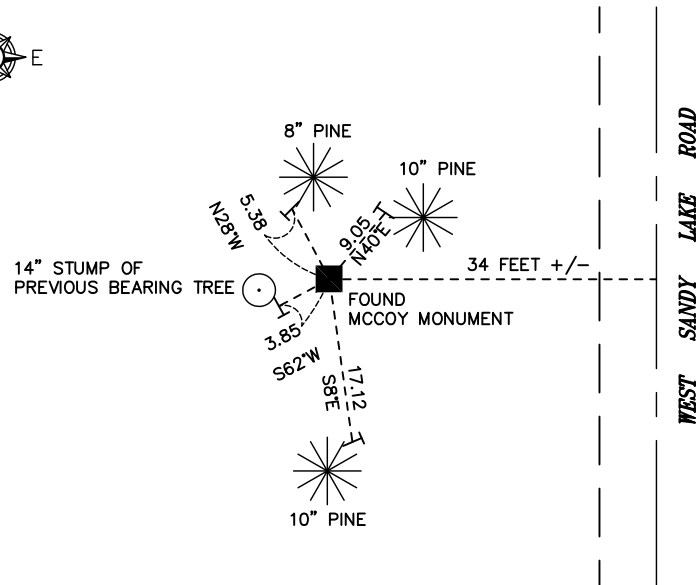
Nick Hillmer
Josh Oslund
Dan Greenwald

MONROE COUNTY
COORDINATE SYSTEM
NAD 1983 (2007)

MCCOY MONUMENT
Northing (Y) 384372.35
Easting (X) 642321.51

Base Station - 22 182W
Northing (Y) 408053.25
Easting (X) 679287.00

All distances are shown in U.S. Survey Feet.
Ties are to 60D nails set in trees.
Bearings are for tie reference purposes only.
Coordinates were derived from RTK GNSS procedures.

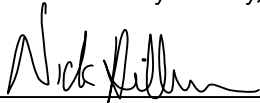


■ = LOCATION CORNER
Corner I.D. SE 8
T 17 N R 3 W
Town of Angelo
Monroe County, WI.

CERTIFICATE

I, Nicholas M. Hillmer, do hereby certify that this document and the data contained herein was prepared by me or under my direct supervision and that I am a duly Licensed Land Surveyor under the laws of the State of Wisconsin.

Dated this 22nd day of May, 2013



Nicholas M. Hillmer, P.L.S. 2909
Anderson Engineering of Minnesota, LLC.

Description of corner and witness monuments, references and accessories used to perpetuate the original or re-established location of this corner:

Witnesses to corner location:

Nick Hillmer
Josh Oslund
Dan Greenwald

MONROE COUNTY
COORDINATE SYSTEM
NAD 1983 (2007)

MCCOY DIG MONUMENT
Northing (Y) 386753.73
Easting (X) 642279.21

Base Station - 22 182W
Northing (Y) 408053.25
Easting (X) 679287.00

All distances are shown in U.S. Survey Feet.
Ties are to 60D nails.
Bearings are for tie reference purposes only.
Coordinates were derived from RTK GNSS procedures.

CERTIFIED LAND CORNER

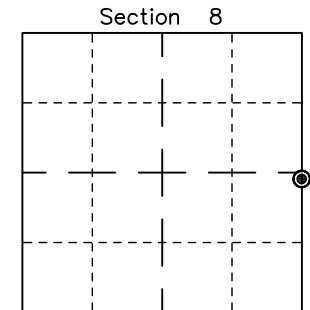
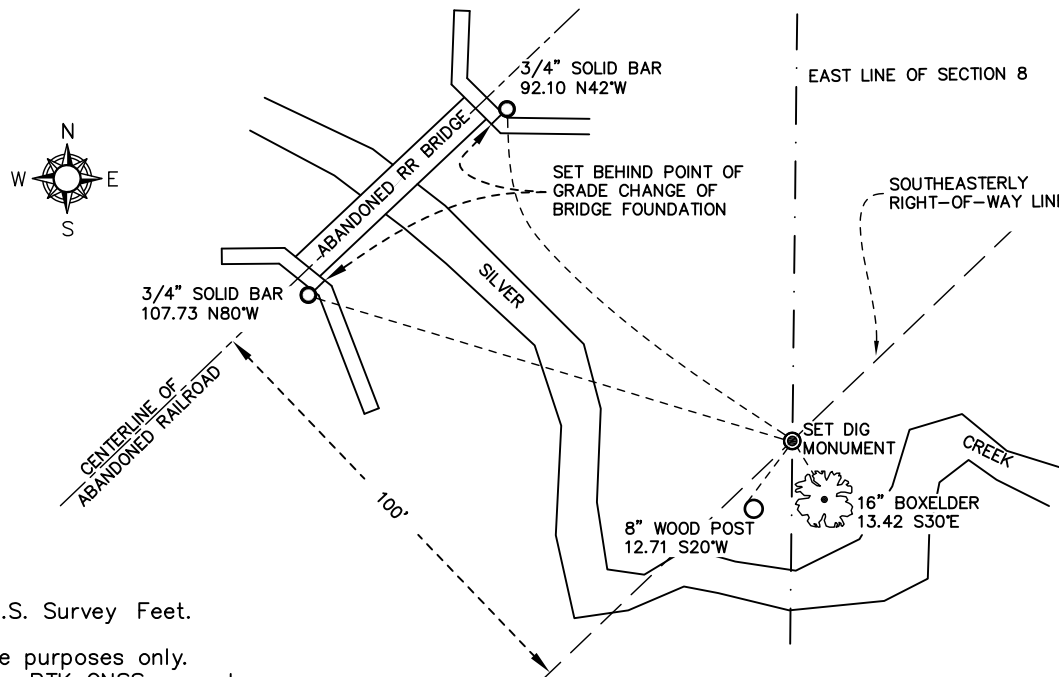
History of corner established since Original Government Survey

There is no previous history at this location.

Description of evidence found

On April 24th, 2013, Anderson Engineering of Minnesota set a 30 inch Berntsen aluminum dig monument with a 3 1/4 inch aluminum cap, stamped "FORT MCCOY BOUNDARY" "2013" "ANDERSON ENG. OF MN". The monument is set at the intersection of the east line of Section 8 and the southeasterly line of the abandoned Milwaukee, Sparta, and Northwestern Railway 200 foot wide right-of-way.

No. _____

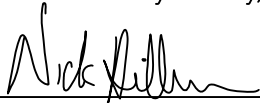


⊙ = LOCATION CORNER
Corner I.D. _____
T 17 N R 3 W
Town of Angelo
Monroe County, WI.

CERTIFICATE

I, Nicholas M. Hillmer, do hereby certify that this document and the data contained herein was prepared by me or under my direct supervision and that I am a duly Licensed Land Surveyor under the laws of the State of Wisconsin.

Dated this 22nd day of May, 2013



Nicholas M. Hillmer, P.L.S. 2909
Anderson Engineering of Minnesota, LLC.

CERTIFIED LAND CORNER

History of corner established since Original Government Survey

The 1940's McCoy boundary notes show a corner at this location.

Description of evidence found

On September 9th, 2012, Anderson Engineering of Minnesota located the McCoy monument, a 4 inch U.S. Army Corps of Engineers survey control mark disk set in concrete. The monument was not accepted as the corner. On April 24th, 2013, Anderson Engineering of Minnesota set a 30 inch Berntsen aluminum dig monument with a 3 1/4 inch aluminum cap, stamped "FORT MCCOY BOUNDARY" "2013" "ANDERSON ENG. OF MN". The Monument is set at the point of curvature on the southeasterly line of the abandoned Milwaukee, Sparta, and Northwestern Railway company 200 foot wide right-of-way.

No. _____

Description of corner and witness monuments, references and accessories used to perpetuate the original or re-established location of this corner:

Witnesses to corner location:

Nick Hillmer
Josh Oslund
Dan Greenwald

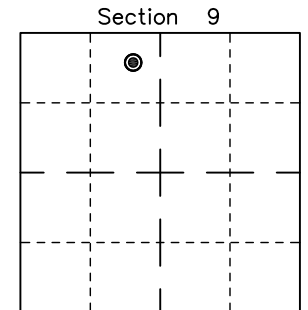
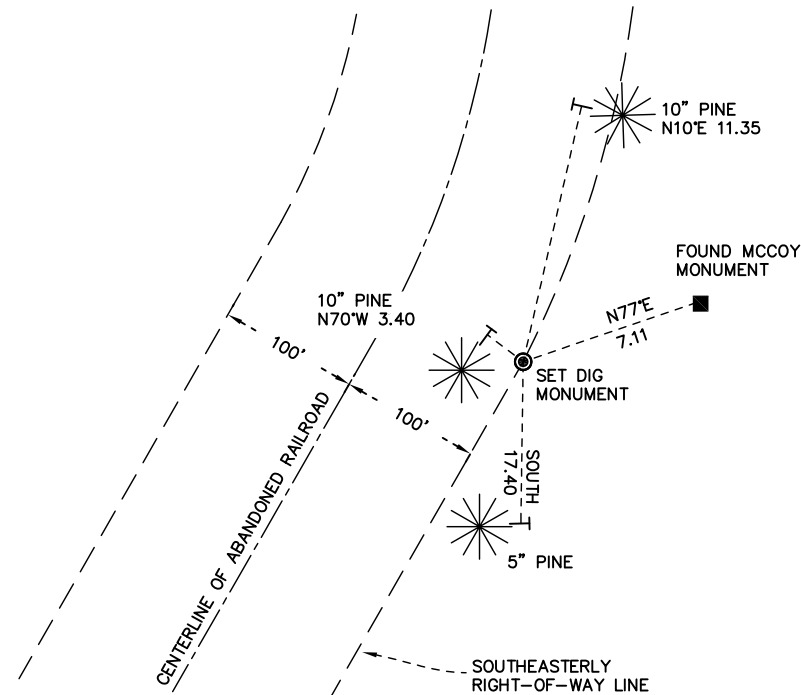
MONROE COUNTY
 COORDINATE SYSTEM
NAD 1983 (2007)

MCCOY DIG MONUMENT
 Northing (Y) 388807.65
 Easting (X) 644239.87

Base Station - 22 182W
 Northing (Y) 408053.25
 Easting (X) 679287.00



All distances are shown in U.S. Survey Feet.
 Ties are to 60D nails.
 Bearings are for tie reference purposes only.
 Coordinates were derived from RTK GNSS procedures.

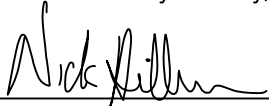


● = LOCATION CORNER
 Corner I.D. _____
 T 17 N R 3 W
 Town of Angelo
 Monroe County, WI.

CERTIFICATE

I, Nicholas M. Hillmer, do hereby certify that this document and the data contained herein was prepared by me or under my direct supervision and that I am a duly Licensed Land Surveyor under the laws of the State of Wisconsin.

Dated this 22nd day of May, 2013



Nicholas M. Hillmer, P.L.S. 2909
Anderson Engineering of Minnesota, LLC.

CERTIFIED LAND CORNER

History of corner established since Original Government Survey

The 1940's McCoy boundary notes show a corner at this location.

Description of evidence found

On September 9th, 2012, Anderson Engineering of Minnesota located the McCoy monument, a 4 inch U.S. Army Corps of Engineers survey control mark disk set in concrete. The monument was not accepted as the corner. On April 24th, 2013, Anderson Engineering of Minnesota set a 30 inch Berntsen aluminum dig monument with a 3 1/4 inch aluminum cap, stamped "FORT MCCOY BOUNDARY" "2013" "ANDERSON ENG. OF MN". The Monument is set at the point of curvature on the southeasterly line of the abandoned Milwaukee, Sparta, and Northwestern Railway 200 foot wide right-of-way.

No. _____
[]

Description of corner and witness monuments, references and accessories used to perpetuate the original or re-established location of this corner:

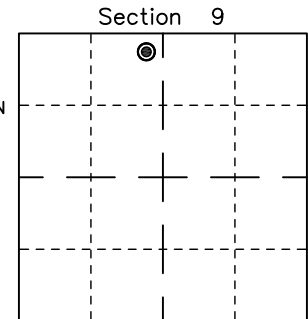
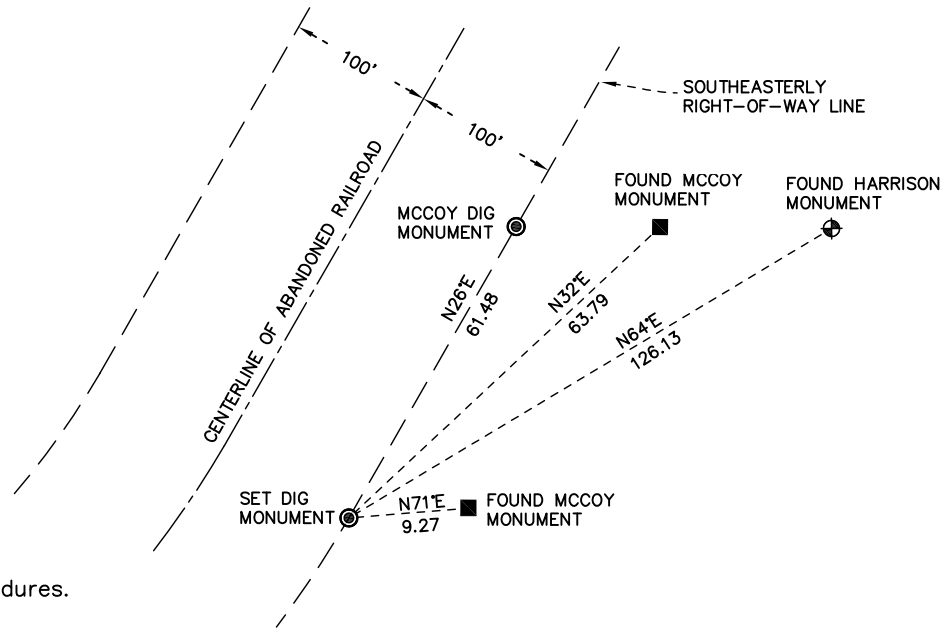
Witnesses to corner location:

Nick Hillmer
Josh Oslund
Dan Greenwald

MONROE COUNTY
COORDINATE SYSTEM
NAD 1983 (2007)

MCCOY DIG MONUMENT
Northing (Y) 389550.40
Easting (X) 644757.76

Base Station - 22 182W
Northing (Y) 408053.25
Easting (X) 679287.00



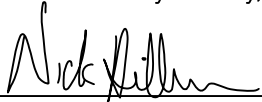
● = LOCATION CORNER
Corner I.D. _____
T 17 N R 3 W
Town of Angelo
Monroe County, WI.

All distances are shown in U.S. Survey Feet.
Bearings are for tie reference purposes only.
Coordinates were derived from RTK GNSS procedures.

CERTIFICATE

I, Nicholas M. Hillmer, do hereby certify that this document and the data contained herein was prepared by me or under my direct supervision and that I am a duly Licensed Land Surveyor under the laws of the State of Wisconsin.

Dated this 22nd day of May, 2013



Nicholas M. Hillmer, P.L.S. 2909
Anderson Engineering of Minnesota, LLC.

CERTIFIED LAND CORNER

History of corner established since Original Government Survey

The 1940's McCoy boundary notes show a corner at this location.

Description of evidence found

On September 9th, 2012, Anderson Engineering of Minnesota located the McCoy monument, a 4 inch U.S. Army Corps of Engineers survey control mark disk set in concrete 0.5 feet above grade. On April 24th, 2013, Anderson Engineering of Minnesota set a 30 inch Berntsen aluminum dig monument with a 3 1/4 inch aluminum cap, stamped "FORT MCCOY BOUNDARY" "2013" "ANDERSON ENG. OF MN". The monument is set at the intersection of the south line of Section 4 and the southeasterly line of the abandoned Milwaukee, Sparta and Northwestern Railway 200 foot wide right-of-way.

No. _____

Description of corner and witness monuments, references and accessories used to perpetuate the original or re-established location of this corner:

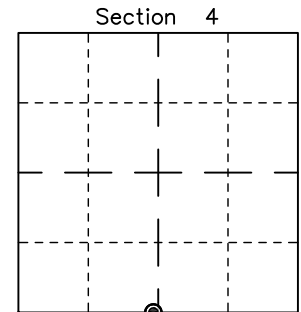
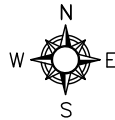
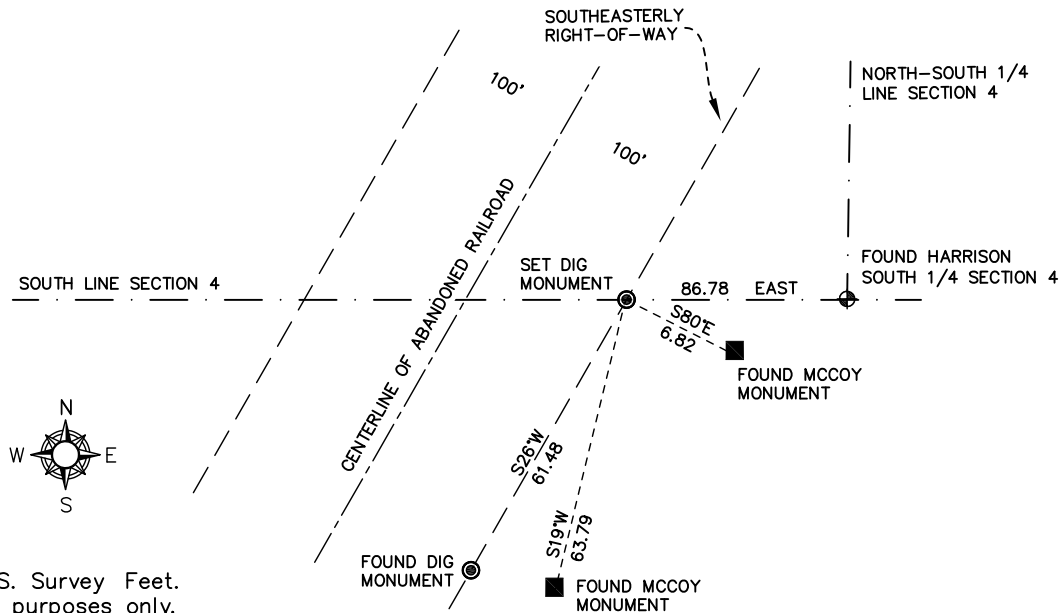
Witnesses to corner location:

Nick Hillmer
Josh Oslund
Dan Greenwald

MONROE COUNTY
 COORDINATE SYSTEM
NAD 1983 (2007)

MCCOY DIG MONUMENT
 Northing (Y) 389605.60
 Easting (X) 644784.80

Base Station - 22 182W
 Northing (Y) 408053.25
 Easting (X) 679287.00



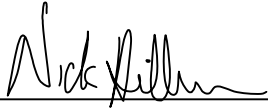
⊙ = LOCATION CORNER
 Corner I.D. _____
 T 17 N R 3 W
 Town of Angelo
 Monroe County, WI.

All distances are shown in U.S. Survey Feet.
 Bearings are for tie reference purposes only.
 Coordinates were derived from RTK GNSS procedures.

CERTIFICATE

I, Nicholas M. Hillmer, do hereby certify that this document and the data contained herein was prepared by me or under my direct supervision and that I am a duly Licensed Land Surveyor under the laws of the State of Wisconsin.

Dated this 23rd day of May, 2013



Nicholas M. Hillmer, P.L.S. 2909
Anderson Engineering of Minnesota, LLC.

CERTIFIED LAND CORNER

History of corner established since Original Government Survey

Ray W. Hurlburt set a 1 inch pipe in June of 1940. In July of 1975 Harley A Sime found and accepted the 1 inch pipe and replaced it with a Harrison monument.

No. 21703040020

Description of evidence found

On September 14, 2012, Anderson Engineering of Minnesota located the Harrison monument flush with the ground and on the west edge of the berm.

Description of corner and witness monuments, references and accessories used to perpetuate the original or re-established location of this corner:

Witnesses to corner location:

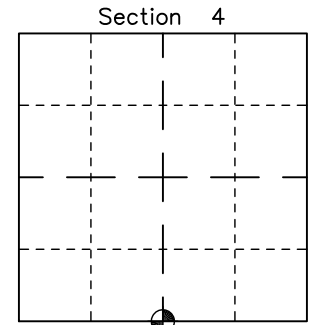
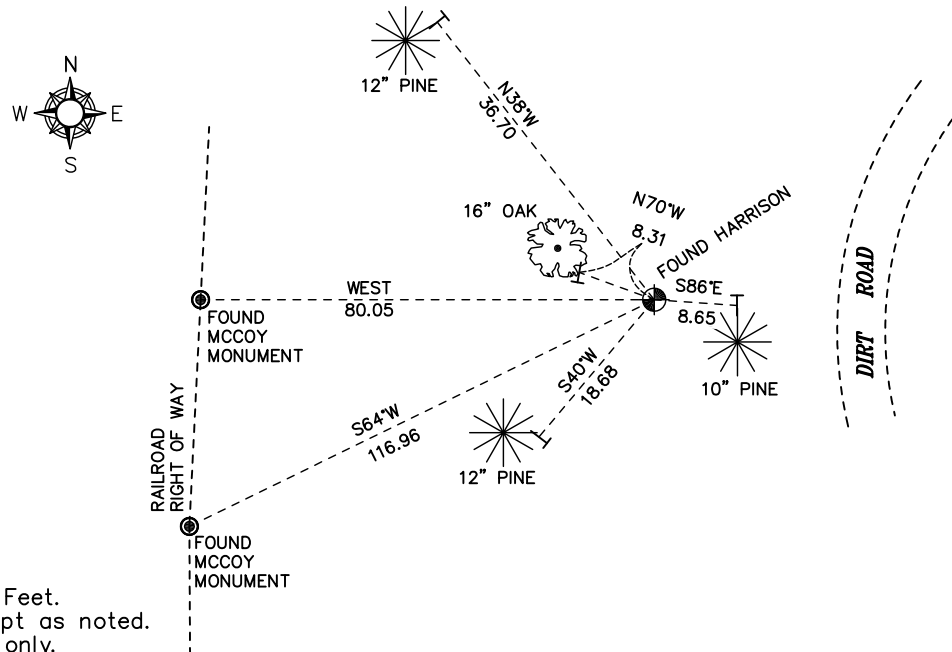
Nick Hillmer
Josh Oslund
Dan Greenwald

MONROE COUNTY
COORDINATE SYSTEM
NAD 1983 (2007)

HARRISON MONUMENT
Northing (Y) 389604.70
Easting (X) 644871.60

Base Station - 22 182W
Northing (Y) 408053.25
Easting (X) 679287.00

All distances are shown in U.S. Survey Feet.
Ties are to 60D nails set in trees, except as noted.
Bearings are for tie reference purposes only.
Coordinates were derived from RTK GNSS procedures.

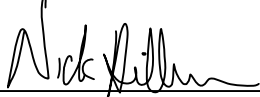


⊕ = LOCATION CORNER
Corner I.D. S 1/4 4
T 17 N R 3 W
Town of Angelo
Monroe County, WI.

CERTIFICATE

I, Nicholas M. Hillmer, do hereby certify that this document and the data contained herein was prepared by me or under my direct supervision and that I am a duly Licensed Land Surveyor under the laws of the State of Wisconsin.

Dated this 22nd day of May, 2013



Nicholas M. Hillmer, P.L.S. 2909
Anderson Engineering of Minnesota, LLC.

CERTIFIED LAND CORNER

History of corner established since Original Government Survey

The 1940's McCoy boundary notes show no monument was set at this location.

Description of evidence found

On April 24th, 2013, Anderson Engineering of Minnesota set a 30 inch Berntsen aluminum dig monument with a 3 1/4 inch aluminum cap, stamped "FORT MCCOY BOUNDARY" "2013" "ANDERSON ENG. OF MN". The monument is set at the intersection of the north-south quarter line of Section 4 and the northwesterly line of the abandoned Milwaukee, Sparta and Northwestern Railway 200 foot wide right-of-way.

No. _____

Description of corner and witness monuments, references and accessories used to perpetuate the original or re-established location of this corner:

Witnesses to corner location:

Nick Hillmer
Josh Oslund
Dan Greenwald

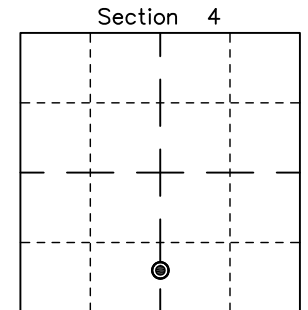
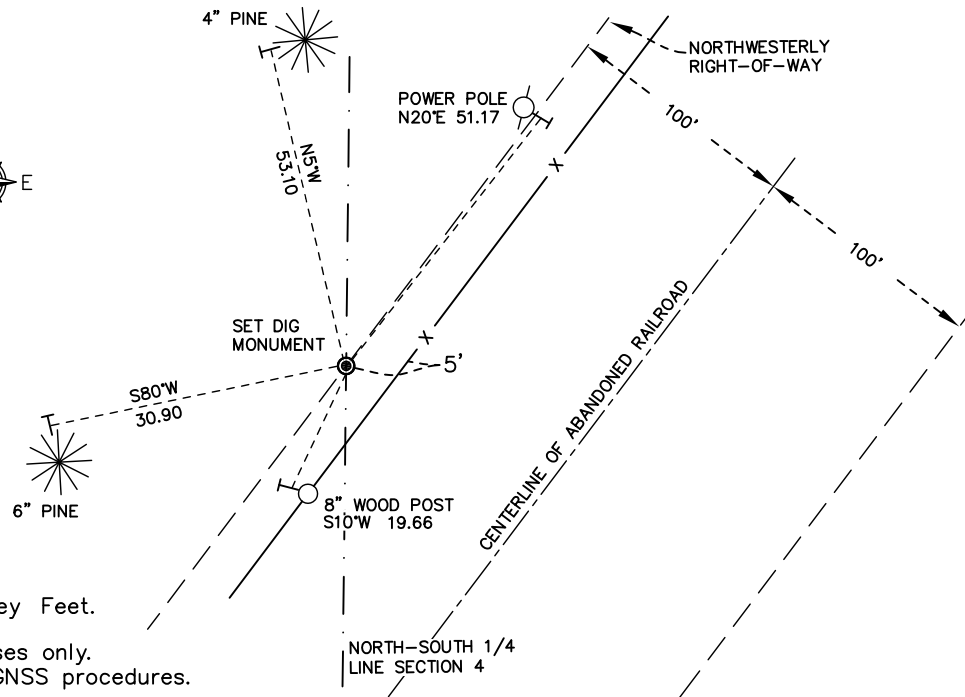


MONROE COUNTY
 COORDINATE SYSTEM
 NAD 1983 (2007)

MCCOY DIG MONUMENT
 Northing (Y) 390203.43
 Easting (X) 644855.00

Base Station - 22 182W
 Northing (Y) 408053.25
 Easting (X) 679287.00

All distances are shown in U.S. Survey Feet.
 Ties are to 60D nails.
 Bearings are for tie reference purposes only.
 Coordinates were derived from RTK GNSS procedures.

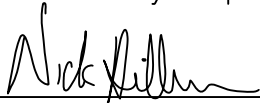


⊙ = LOCATION CORNER
 Corner I.D. _____
 T 17 N R 3 W
 Town of Angelo
 Monroe County, WI.

CERTIFICATE

I, Nicholas M. Hillmer, do hereby certify that this document and the data contained herein was prepared by me or under my direct supervision and that I am a duly Licensed Land Surveyor under the laws of the State of Wisconsin.

Dated this 26th day of April, 2013



Nicholas M. Hillmer, P.L.S. 2909
Anderson Engineering of Minnesota, LLC.


CERTIFIED LAND CORNER

History of corner established since Original Government Survey

No previous monument. This corner was not part of the original McCoy survey.

Description of evidence found

On April 24th, 2013, Anderson Engineering of Minnesota set a 30 inch Berntsen aluminum dig monument with a 3 1/4 inch aluminum cap, stamped "FORT MCCOY BOUNDARY" "2013" "ANDERSON ENG. OF MN". The monument is set at the intersection of the right-of-ways of the existing 100 foot wide Canadian Pacific Railroad and the abandoned 200 foot wide Milwaukee, Sparta and Northwestern Railroad.

No. _____


Description of corner and witness monuments, references and accessories used to perpetuate the original or re-established location of this corner:

Witnesses to corner location:

Nick Hillmer
Josh Oslund
Dan Greenwald

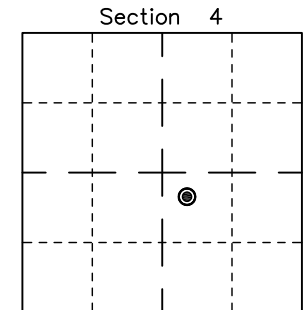
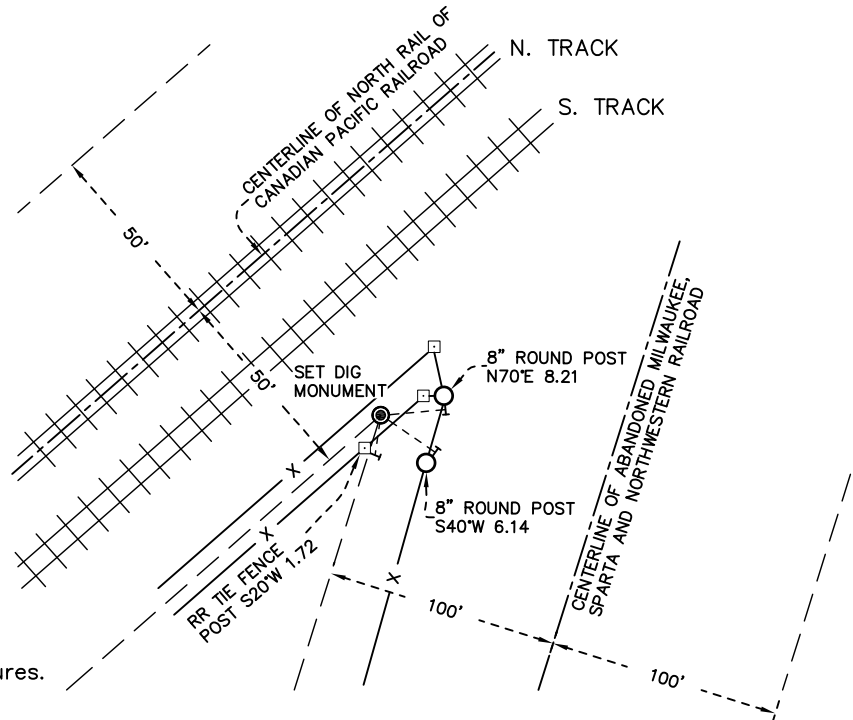
MONROE COUNTY
 COORDINATE SYSTEM
NAD 1983 (2007)

MCCOY DIG MONUMENT
 Northing (Y) 391698.29
 Easting (X) 645587.41

Base Station - 22 182W
 Northing (Y) 408053.25
 Easting (X) 679287.00



All distances are shown in U.S. Survey Feet.
 Ties are to 60D nails.
 Bearings are for tie reference purposes only.
 Coordinates were derived from RTK GNSS procedures.

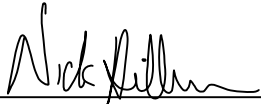


● = LOCATION CORNER
 Corner I.D. _____
 T 17 N R 3 W
 Town of Angelo
 Monroe County, WI.

CERTIFICATE

I, Nicholas M. Hillmer, do hereby certify that this document and the data contained herein was prepared by me or under my direct supervision and that I am a duly Licensed Land Surveyor under the laws of the State of Wisconsin.

Dated this 21st day of May, 2013



Nicholas M. Hillmer, P.L.S. 2909
Anderson Engineering of Minnesota, LLC.

CERTIFIED LAND CORNER

History of corner established since Original Government Survey

The 1940's McCoy boundary notes show a corner at this location.

Description of evidence found

No evidence of original McCoy monument was found. On April 24th, 2013, Anderson Engineering of Minnesota set a 30 inch Berntsen aluminum dig monument with a 3 1/4 inch aluminum cap, stamped "FORT MCCOY BOUNDARY" "2013" "ANDERSON ENG. OF MN". The monument is set at the intersection of the east line of Section 4 and the south right-of-way of the Canadian Pacific Railroad.

No. _____

Description of corner and witness monuments, references and accessories used to perpetuate the original or re-established location of this corner:

Witnesses to corner location:

Nick Hillmer
Josh Oslund
Dan Greenwald

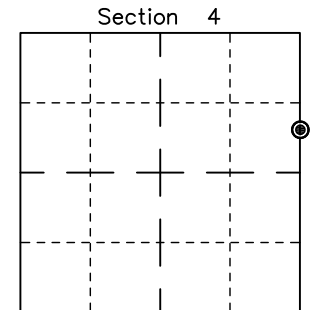
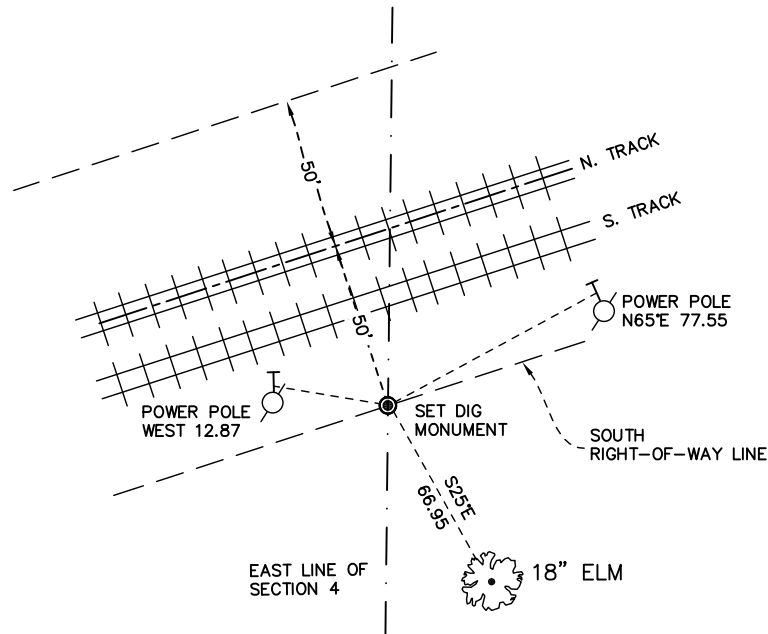
MONROE COUNTY
 COORDINATE SYSTEM
NAD 1983 (2007)

MCCOY DIG MONUMENT
 Northing (Y) 392736.79
 Easting (X) 647468.21

Base Station - 22 182W
 Northing (Y) 408053.25
 Easting (X) 679287.00



All distances are shown in U.S. Survey Feet.
 Ties are to 60D nails.
 Bearings are for tie reference purposes only.
 Coordinates were derived from RTK GNSS procedures.



⊙ = LOCATION CORNER
 Corner I.D. _____
 T 17 N R 3 W
 Town of Angelo
 Monroe County, WI.