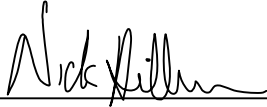


# CERTIFICATE

I, Nicholas M. Hillmer, do hereby certify that this document and the data contained herein was prepared by me or under my direct supervision and that I am a duly Licensed Land Surveyor under the laws of the State of Wisconsin.

Dated this 23rd day of May, 2013



Nicholas M. Hillmer, P.L.S. 2909  
Anderson Engineering of Minnesota, LLC.

# CERTIFIED LAND CORNER

## History of corner established since Original Government Survey

Fred Holden was at this corner in 1901. In 1936 David Blencoe set a ford drive shaft. In 1980 William Jung states he finds Blencoe's corner location with a mound and pits, but missing the drive shaft. Jung set a Harrison monument in the mound.

No. 21703040000

## Description of evidence found

On February 5th, 2013, Anderson Engineering of Minnesota located the Harrison monument in a mound with pits 6 feet north and 8 feet south of the monument.

Description of corner and witness monuments, references and accessories used to perpetuate the original or re-established location of this corner:

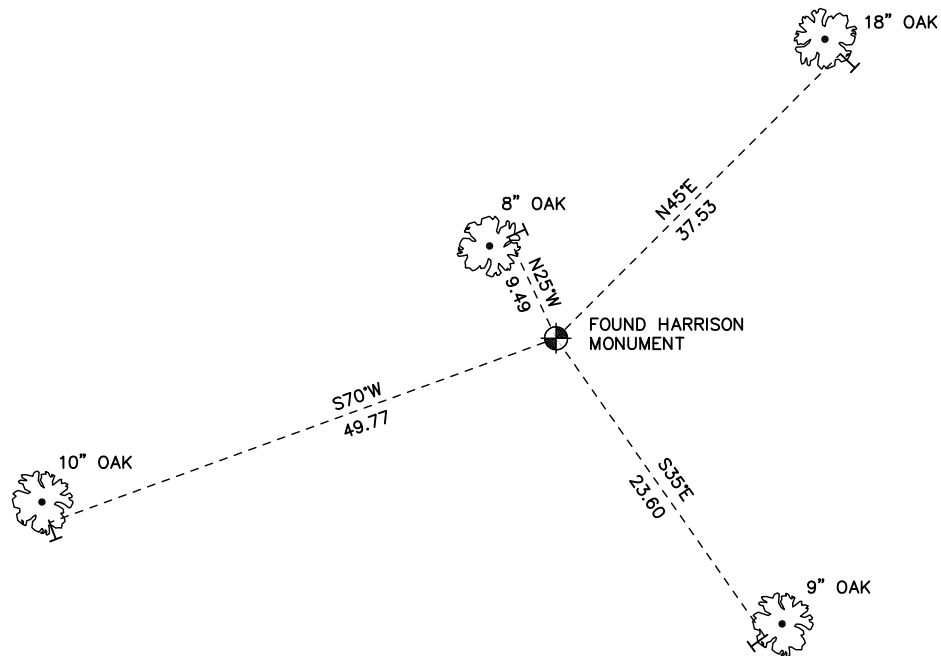
Witnesses to corner location:

Nick Hillmer  
Josh Oslund  
Dan Greenwald

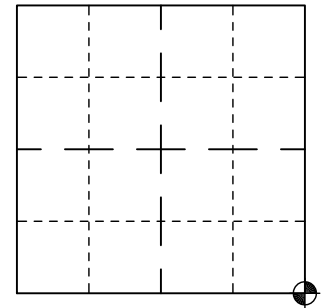
MONROE COUNTY  
COORDINATE SYSTEM  
NAD 1983 (2007)

HARRISON MONUMENT  
Northing (Y) 389596.02  
Easting (X) 647558.20

Base Station - 22 182W  
Northing (Y) 408053.25  
Easting (X) 679287.00



Section 4



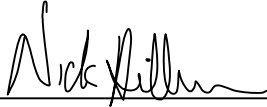
⊙ = LOCATION CORNER  
Corner I.D. SE 4  
T 17 N R 3 W  
Town of Angelo  
Monroe County, WI.

All distances are shown in U.S. Survey Feet.  
Ties are to 60D nails set in trees.  
Bearings are for tie reference purposes only.  
Coordinates were derived from RTK GNSS procedures.

# CERTIFICATE

I, Nicholas M. Hillmer, do hereby certify that this document and the data contained herein was prepared by me or under my direct supervision and that I am a duly Licensed Land Surveyor under the laws of the State of Wisconsin.

Dated this 23rd day of May, 2013



Nicholas M. Hillmer, P.L.S. 2909  
Anderson Engineering of Minnesota, LLC.

# CERTIFIED LAND CORNER

History of corner established since Original Government Survey

William Jung set this Harrison monument during a section breakdown of Section 4 in 1980.

No. 21703042000

## Description of evidence found

On November 30th, 2012, Anderson Engineering of Minnesota located the Harrison monument with the top broke off. The monument is in a pine tree plantation midway between the 2nd and 3rd row of trees.

Description of corner and witness monuments, references and accessories used to perpetuate the original or re-established location of this corner:

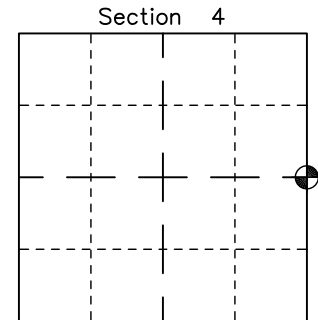
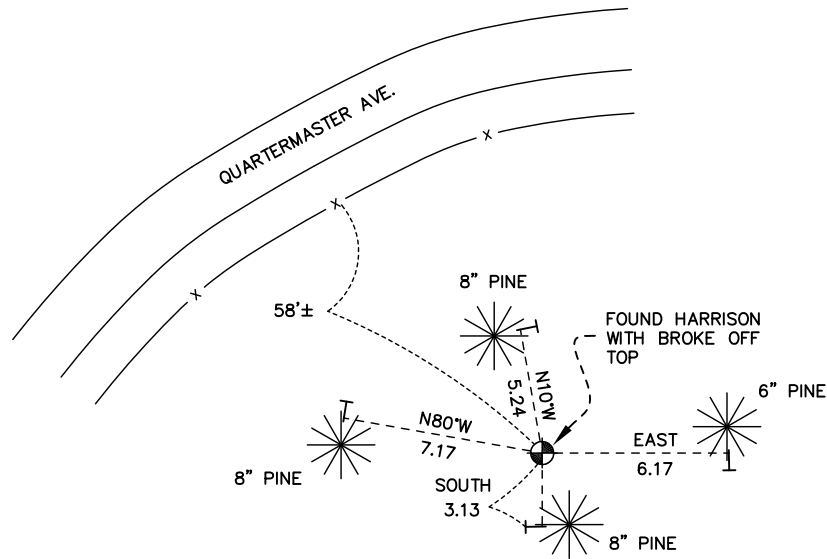
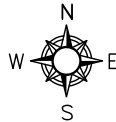
Witnesses to corner location:

Nick Hillmer  
Josh Oslund  
Dan Greenwald

MONROE COUNTY  
COORDINATE SYSTEM  
NAD 1983 (2007)

HARRISON MONUMENT  
Northing (Y) 392243.24  
Easting (X) 647482.32

Base Station - 22 182W  
Northing (Y) 408053.25  
Easting (X) 679287.00



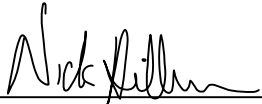
● = LOCATION CORNER  
Corner I.D. E 1/4 4  
T 17 N R 3 W  
Town of Angelo  
Monroe County, WI.

All distances are shown in U.S. Survey Feet.  
Ties are to 60D nails set in trees.  
Bearings are for tie reference purposes only.  
Coordinates were derived from RTK GNSS procedures.

## CERTIFICATE

I, Nicholas M. Hillmer, do hereby certify that this document and the data contained herein was prepared by me or under my direct supervision and that I am a duly Licensed Land Surveyor under the laws of the State of Wisconsin.

Dated this 23rd day of May, 2013



Nicholas M. Hillmer, P.L.S. 2909  
Anderson Engineering of Minnesota, LLC.

## CERTIFIED LAND CORNER

History of corner established since Original Government Survey

Ray Hurlburt found a stake and set a 2 inch pipe. In 1975 Harley Sime found and accepted Hurlburt's pipe and replaced it with a Harrison monument.

Description of evidence found

On January 23rd, 2013, Anderson Engineering of Minnesota located the Harrison monument flush with the ground and 0.75 feet southwest of a wood fence corner of a fence that runs north and southeast. A witness post with a survey marker sign was also found.

No. \_\_\_\_\_  
**21703050000**

Description of corner and witness monuments, references and accessories used to perpetuate the original or re-established location of this corner:

Witnesses to corner location:

Nick Hillmer  
Josh Oslund  
Dan Greenwald

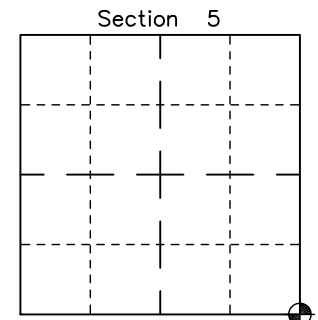
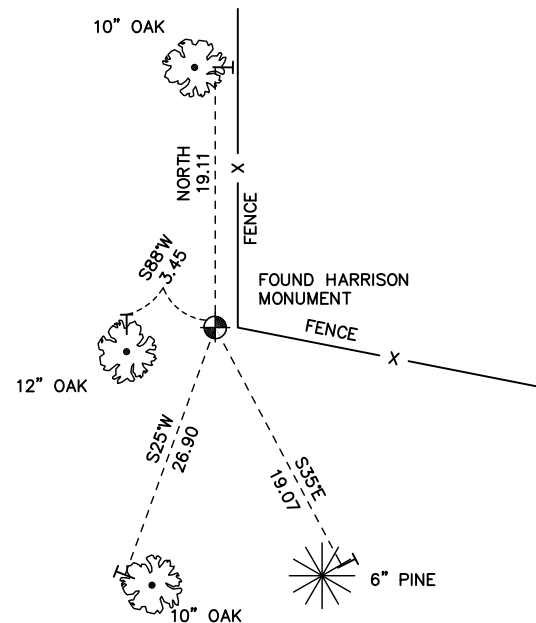
MONROE COUNTY  
COORDINATE SYSTEM  
NAD 1983 (2007)

HARRISON MONUMENT  
Northing (Y) 389632.15  
Easting (X) 642239.22

Base Station - 22 182W  
Northing (Y) 408053.25  
Easting (X) 679287.00



All distances are shown in U.S. Survey Feet.  
Ties are to 60D nails set in trees.  
Bearings are for tie reference purposes only.  
Coordinates were derived from RTK GNSS procedures.

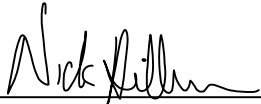


⊙ = LOCATION CORNER  
Corner I.D. SE 5  
T 17 N R 3 W  
Town of Angelo  
Monroe County, WI.

# CERTIFICATE

I, Nicholas M. Hillmer, do hereby certify that this document and the data contained herein was prepared by me or under my direct supervision and that I am a duly Licensed Land Surveyor under the laws of the State of Wisconsin.

Dated this 23rd day of May, 2013



Nicholas M. Hillmer, P.L.S. 2909  
Anderson Engineering of Minnesota, LLC.

# CERTIFIED LAND CORNER

## History of corner established since Original Government Survey

Fred Holden re-established this corner in 1907. The 1911 town road records show this corner to be on the north right-of-way line of a four rod road. Verdell Hallingstad stated that he found an old iron pipe and replaced it with a 3 inch iron pipe in 1972. In 1981, William Jung found and accepted the 3 inch pipe as the the corner. Jung set a Harrison monument as a witness marker.

## Description of evidence found

On January 23rd, 2013, Anderson Engineering of Minnesota located the 3 1/2 inch pipe 4 feet above grade. The pipe is leaning slightly. Also found was the Harrison monument with the top missing. The Harrison is a witness marker to the pipe.

No. \_\_\_\_\_  
**21703080020**

Description of corner and witness monuments, references and accessories used to perpetuate the original or re-established location of this corner:

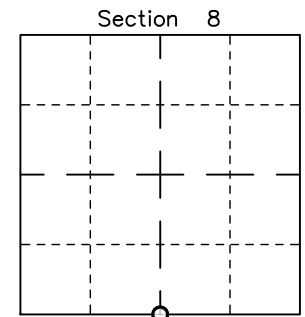
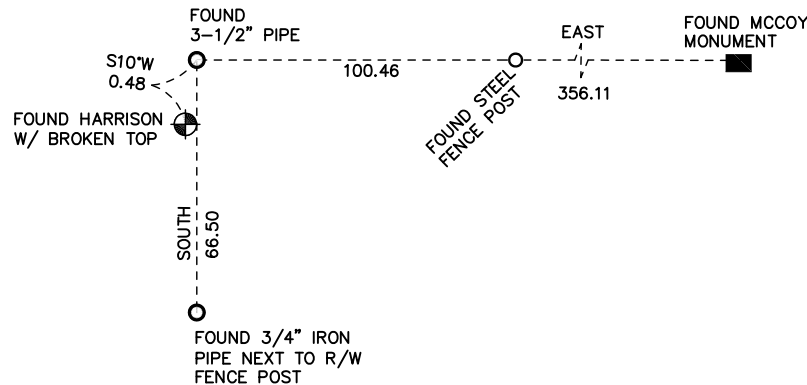
Witnesses to corner location:

Nick Hillmer  
Josh Oslund  
Dan Greenwald

MONROE COUNTY  
COORDINATE SYSTEM  
NAD 1983 (2007)

3 1/2 INCH PIPE  
Northing (Y) 384424.10  
Easting (X) 639693.52

Base Station - 22 182W  
Northing (Y) 408053.25  
Easting (X) 679287.00



○ = LOCATION CORNER

Corner I.D. S 1/4 8

T 17 N R 3 W

Town of Angelo

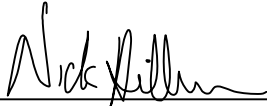
Monroe County, WI.

All distances are shown in U.S. Survey Feet.  
Bearings are for tie reference purposes only.  
Coordinates were derived from RTK GNSS procedures.

**CERTIFICATE**

I, Nicholas M. Hillmer, do hereby certify that this document and the data contained herein was prepared by me or under my direct supervision and that I am a duly Licensed Land Surveyor under the laws of the State of Wisconsin.

Dated this 23rd day of May, 2013



Nicholas M. Hillmer, P.L.S. 2909  
Anderson Engineering of Minnesota, LLC.

**CERTIFIED LAND CORNER**

**History of corner established since Original Government Survey**

In 1940 Ray Hurlburt set a buggy axle into an iron pipe. Gary Dechant found Hurlburts's mound without monument. Dechant also found Hurlburt's 1/16 corners to the north and south. Dechant set a 2 inch by 4 1/2 foot iron pipe in the middle of the mound.

**Description of evidence found**

On September 14, 2012, Anderson Engineering of Minnesota located the 2 inch iron pipe in a mound 2 feet above grade.

No. 21703082000

Description of corner and witness monuments, references and accessories used to perpetuate the original or re-established location of this corner:

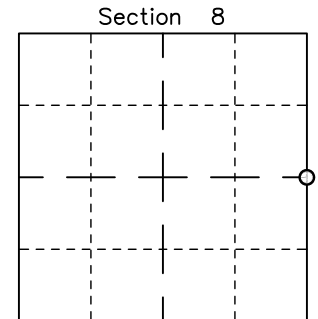
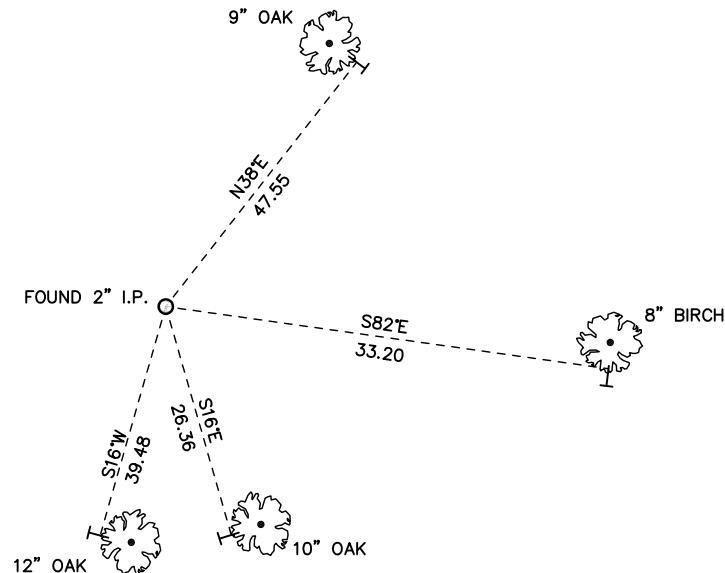
Witnesses to corner location:

Nick Hillmer  
Josh Oslund  
Dan Greenwald

MONROE COUNTY  
COORDINATE SYSTEM  
NAD 1983 (2007)

2 INCH IRON PIPE  
Northing (Y) 387000.68  
Easting (X) 642274.83

Base Station - 22 182W  
Northing (Y) 408053.25  
Easting (X) 679287.00



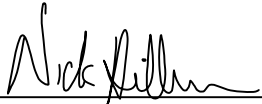
○ = LOCATION CORNER  
Corner I.D. E 1/4 8  
T 17 N R 3 W  
Town of Angelo  
Monroe County, WI.

All distances are shown in U.S. Survey Feet.  
Ties are to 60D nails set in trees.  
Bearings are for tie reference purposes only.  
Coordinates were derived from RTK GNSS procedures.

# CERTIFICATE

I, Nicholas M. Hillmer, do hereby certify that this document and the data contained herein was prepared by me or under my direct supervision and that I am a duly Licensed Land Surveyor under the laws of the State of Wisconsin.

Dated this 23rd day of May, 2013



Nicholas M. Hillmer, P.L.S. 2909  
Anderson Engineering of Minnesota, LLC.

# CERTIFIED LAND CORNER

## History of corner established since Original Government Survey

In 1936 David Blencoe set an auto steering post. In 1980 William Jung found Blencoe's corner and replaced it with a Harrison monument.

## Description of evidence found

On February 5th, 2013, Anderson Engineering of Minnesota located the Harrison monument flush with the ground and 0.4 feet north of a witness post with survey marker sign.

No. \_\_\_\_\_  
**21703090020**

Description of corner and witness monuments, references and accessories used to perpetuate the original or re-established location of this corner:

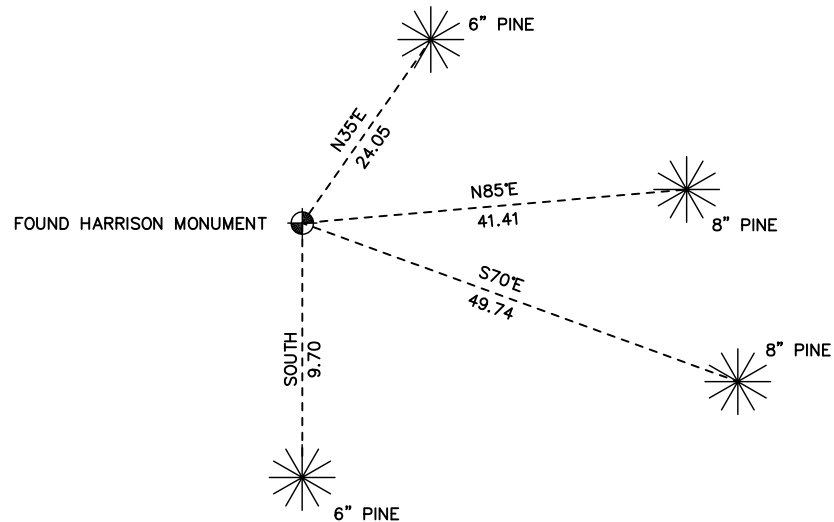
Witnesses to corner location:

Nick Hillmer  
Josh Oslund  
Dan Greenwald

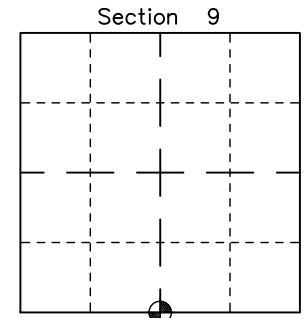
MONROE COUNTY  
COORDINATE SYSTEM  
NAD 1983 (2007)

HARRISON MONUMENT  
Northing (Y) 384371.57  
Easting (X) 644976.00

Base Station - 22 182W  
Northing (Y) 408053.25  
Easting (X) 679287.00



All distances are shown in U.S. Survey Feet.  
Ties are to 60D nails set in trees.  
Bearings are for tie reference purposes only.  
Coordinates were derived from RTK GNSS procedures.

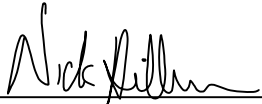


⊙ = LOCATION CORNER  
Corner I.D. S 1/4 9  
T 17 N R 3 W  
Town of Angelo  
Monroe County, WI.

**CERTIFICATE**

I, Nicholas M. Hillmer, do hereby certify that this document and the data contained herein was prepared by me or under my direct supervision and that I am a duly Licensed Land Surveyor under the laws of the State of Wisconsin.

Dated this 23rd day of May, 2013



Nicholas M. Hillmer, P.L.S. 2909  
Anderson Engineering of Minnesota, LLC.

**CERTIFIED LAND CORNER**

**History of corner established since Original Government Survey**

In 1936 David Blencoe set an old pump top in a mound with pits. William Jung found Blencoe's corner and replaced it with a Harrison monument.

**Description of evidence found**

On February 5th, 2013, Anderson Engineering of Minnesota located the Harrison monument flush with the ground in a mound with pits to the north and south.

No. \_\_\_\_\_  
**21703092000**

Description of corner and witness monuments, references and accessories used to perpetuate the original or re-established location of this corner:

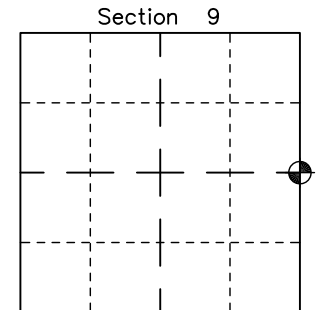
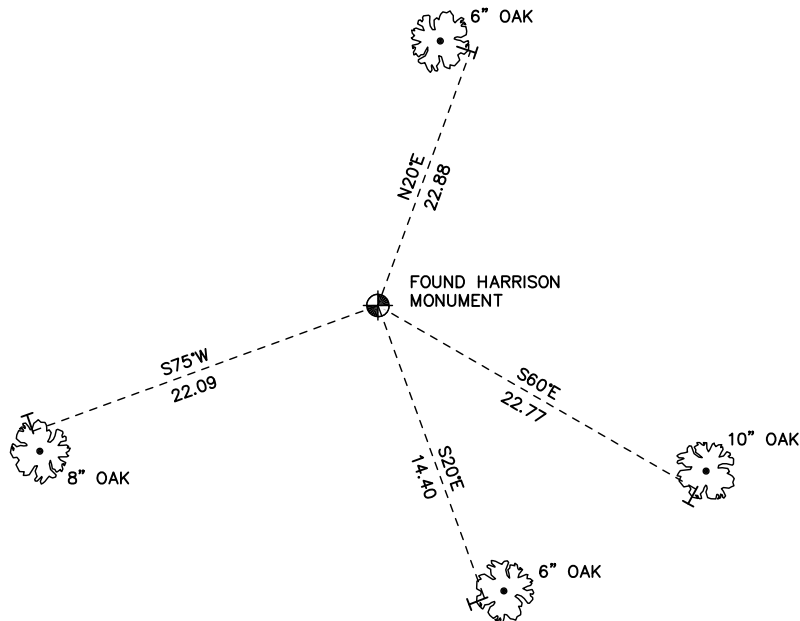
Witnesses to corner location:

Nick Hillmer  
Josh Oslund  
Dan Greenwald

MONROE COUNTY  
COORDINATE SYSTEM  
NAD 1983 (2007)

HARRISON MONUMENT  
Northing (Y) 386965.83  
Easting (X) 647590.97

Base Station - 22 182W  
Northing (Y) 408053.25  
Easting (X) 679287.00



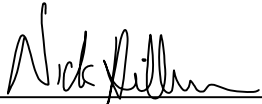
● = LOCATION CORNER  
Corner I.D. E 1/4 9  
T 17 N R 3 W  
Town of Angelo  
Monroe County, WI.

All distances are shown in U.S. Survey Feet.  
Ties are to 60D nails set in trees.  
Bearings are for tie reference purposes only.  
Coordinates were derived from RTK GNSS procedures.

# CERTIFICATE

I, Nicholas M. Hillmer, do hereby certify that this document and the data contained herein was prepared by me or under my direct supervision and that I am a duly Licensed Land Surveyor under the laws of the State of Wisconsin.

Dated this 23rd day of May, 2013



Nicholas M. Hillmer, P.L.S. 2909  
Anderson Engineering of Minnesota, LLC.

# CERTIFIED LAND CORNER

## History of corner established since Original Government Survey

William Jung surveyed Sections 19 and 24 in 1980. Jung shows a computed location for this corner being 5280 feet north of the southwest corner of Section 19 and 5288.61 feet east of the northwest corner of Section 24. H.A Sime and Bryan H. Meyer accept this location in later surveys. Meyer set a Harrison monument at Jung's computed location in 1984.

## Description of evidence found

On February 26th, 2013, Anderson Engineering of Minnesota located the Harrison monument flush with the ground.

No. \_\_\_\_\_  
**21703130000**

Description of corner and witness monuments, references and accessories used to perpetuate the original or re-established location of this corner:

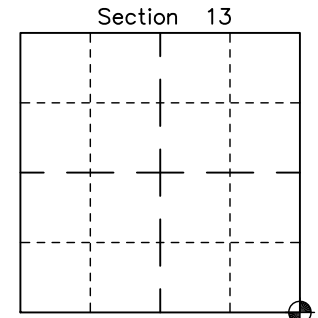
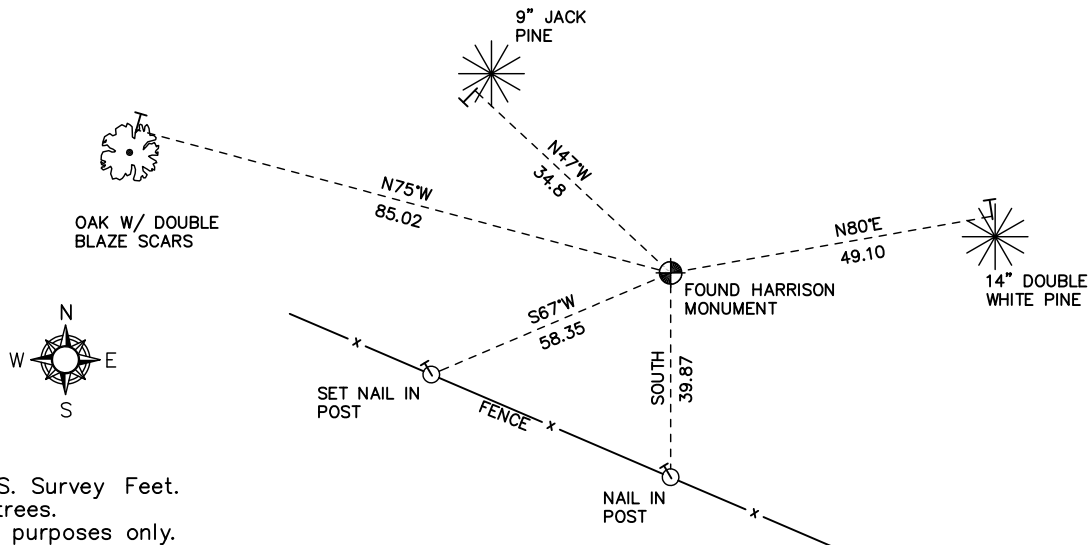
Witnesses to corner location:

Nick Hillmer  
Josh Oslund  
Dan Greenwald

MONROE COUNTY  
COORDINATE SYSTEM  
NAD 1983 (2007)

HARRISON MONUMENT  
Northing (Y) 378924.61  
Easting (X) 663572.27

Base Station - 22 182W  
Northing (Y) 408053.25  
Easting (X) 679287.00



● = LOCATION CORNER  
Corner I.D. SE 13  
T 17 N R 3 W  
Town of Angelo  
Monroe County, WI.

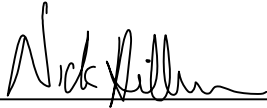
All distances are shown in U.S. Survey Feet.  
Ties are to 60D nails set in trees.  
Bearings are for tie reference purposes only.  
Coordinates were derived from RTK GNSS procedures.



**CERTIFICATE**

I, Nicholas M. Hillmer, do hereby certify that this document and the data contained herein was prepared by me or under my direct supervision and that I am a duly Licensed Land Surveyor under the laws of the State of Wisconsin.

Dated this 23rd day of May, 2013



Nicholas M. Hillmer, P.L.S. 2909  
Anderson Engineering of Minnesota, LLC.

**CERTIFIED LAND CORNER**

**History of corner established since Original Government Survey**

In September of 1980 Harley Sime set a 2 1/2 inch pipe on line and equidistant between the northwest corner of Section 24 and the computed northeast corner of Section 24.

No. 21703130020

**Description of evidence found**

On October 31, 2012, Anderson Engineering of Minnesota located the 2 1/2 inch pipe 3 feet above grade.

Description of corner and witness monuments, references and accessories used to perpetuate the original or re-established location of this corner:

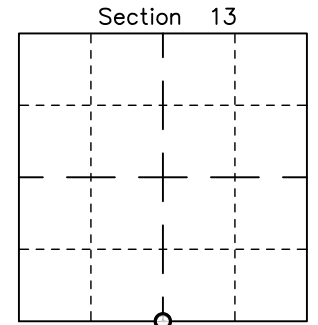
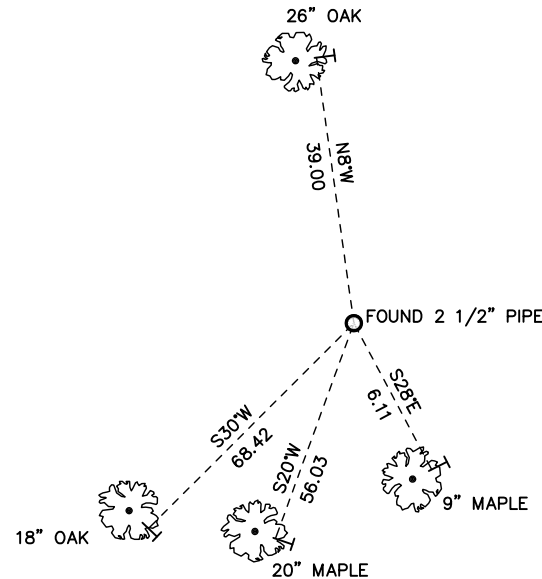
Witnesses to corner location:

Nick Hillmer  
Josh Oslund  
Dan Greenwald

MONROE COUNTY  
COORDINATE SYSTEM  
NAD 1983 (2007)

2 1/2 INCH PIPE  
Northing (Y) 378968.91  
Easting (X) 660928.01

Base Station - 22 182W  
Northing (Y) 408053.25  
Easting (X) 679287.00



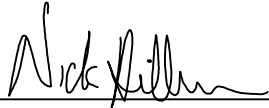
○ = LOCATION CORNER  
Corner I.D. S 1/4 13  
T 17 N R 3 W  
Town of Angelo  
Monroe County, WI.

All distances are shown in U.S. Survey Feet.  
Ties are to 60D nails set in trees.  
Bearings are for tie reference purposes only.  
Coordinates were derived from RTK GNSS procedures.

# CERTIFICATE

I, Nicholas M. Hillmer, do hereby certify that this document and the data contained herein was prepared by me or under my direct supervision and that I am a duly Licensed Land Surveyor under the laws of the State of Wisconsin.

Dated this 23rd day of May, 2013



Nicholas M. Hillmer, P.L.S. 2909  
Anderson Engineering of Minnesota, LLC.

# CERTIFIED LAND CORNER

## History of corner established since Original Government Survey

In 1971, Harley Sime set a Harrison monument on line with the fence line to the south and at the original government distance from the occupied southwest corner of Section 24. Sime states this position also fits that location as shown on the 1935 and 1960 highway maps.

## Description of evidence found

On August 12th, 2013, Anderson Engineering of Minnesota located the Harrison monument flush with the ground.

No. \_\_\_\_\_  
**21703140000**

Description of corner and witness monuments, references and accessories used to perpetuate the original or re-established location of this corner:

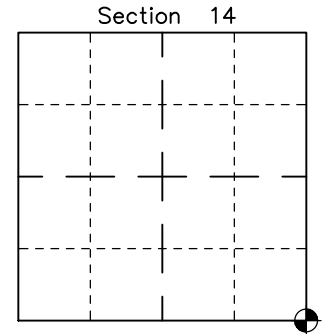
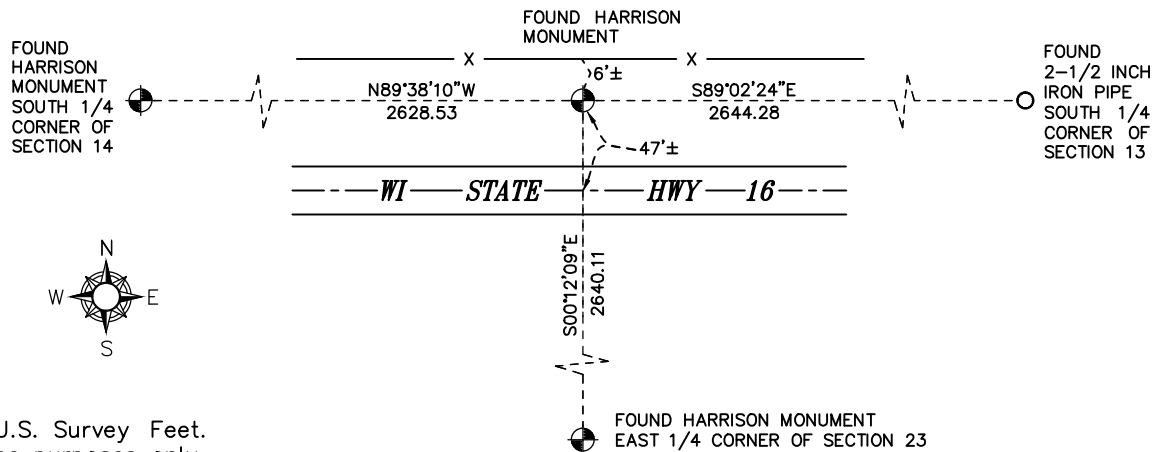
Witnesses to corner location:

Nick Hillmer  
Josh Oslund  
Dan Greenwald

MONROE COUNTY  
COORDINATE SYSTEM  
NAD 1983 (2007)

HARRISON MONUMENT  
Northing (Y) 379013.21  
Easting (X) 658284.10

Base Station - 22 182W  
Northing (Y) 408053.25  
Easting (X) 679287.00



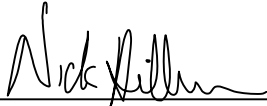
⊙ = LOCATION CORNER  
Corner I.D. SE 14  
T 17 N R 3 W  
Town of Angelo  
Monroe County, WI.

All distances are shown in U.S. Survey Feet.  
Bearings are for tie reference purposes only.  
Coordinates were derived from RTK GNSS procedures.

**CERTIFICATE**

I, Nicholas M. Hillmer, do hereby certify that this document and the data contained herein was prepared by me or under my direct supervision and that I am a duly Licensed Land Surveyor under the laws of the State of Wisconsin.

Dated this 23rd day of May, 2013



Nicholas M. Hillmer, P.L.S. 2909  
Anderson Engineering of Minnesota, LLC.

**CERTIFIED LAND CORNER**

**History of corner established since Original Government Survey**

Old highway maps show a distance to this corner from the NW corner of Section 22. The Town Road records of May 1885 call for the road to be on the section line. In July of 1981 Harley A. Sime set a Harrison monument at the original government survey distances from the NE corner of Section 23 and the SW corner of Section 23. Sime stated that this fits the road map distance from the NW corner of Section 22 reasonably well. It also fits a pattern, proportionate distance north of highway centerline with all corners between the NW corner of Section 20 and the N 1/4 corner of Section 23. The 1935 highway map shows that the new Highway "16" would shift south of the old road. This agrees with Sime's findings.

**Description of evidence found**

On August 15th, 2012, Anderson Engineering of Minnesota located the Harrison monument flush with the ground.

No. 21703150000

Description of corner and witness monuments, references and accessories used to perpetuate the original or re-established location of this corner:

Anderson Engineering of Minnesota

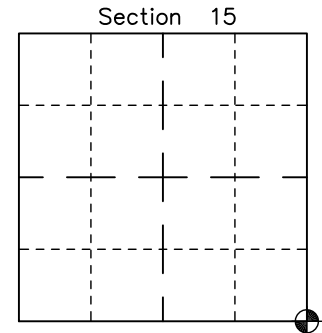
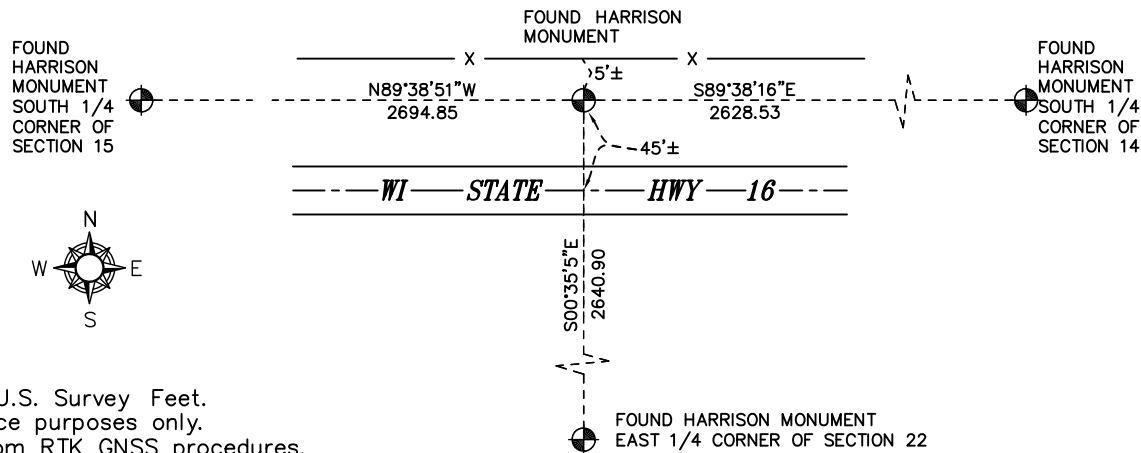
Witnesses to corner location:

Nick Hillmer  
Josh Oslund  
Dan Greenwald

MONROE COUNTY  
COORDINATE SYSTEM  
NAD 1983 (2007)  
  
HARRISON MONUMENT  
Northing (Y) 379046.52  
Easting (X) 653027.15

Base Station - 22 182W  
Northing (Y) 408053.25  
Easting (X) 679287.00

All distances are shown in U.S. Survey Feet.  
Bearings are for tie reference purposes only.  
Coordinates were derived from RTK GNSS procedures.

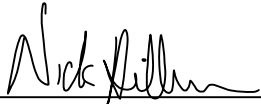


☉ = LOCATION CORNER  
Corner I.D. SE 15  
T 17 N R 3 W  
Town of Angelo  
Monroe County, WI.

# CERTIFICATE

I, Nicholas M. Hillmer, do hereby certify that this document and the data contained herein was prepared by me or under my direct supervision and that I am a duly Licensed Land Surveyor under the laws of the State of Wisconsin.

Dated this 23rd day of May, 2013



Nicholas M. Hillmer, P.L.S. 2909  
Anderson Engineering of Minnesota, LLC.

# CERTIFIED LAND CORNER

## History of corner established since Original Government Survey

The town road records of May 1885 call for this corner to be at the road intersection. The 1935 Highway map shows that the new Highway "16" would shift south of the old road. Harley Sime set a Harrison monument at the corner by single proportionate measurement that fits road to the south reasonably well.

## Description of evidence found

On February 6th, 2013, Anderson Engineering of Minnesota located the Harrison monument 0.2 feet below grade. The monument is 43 feet north of the centerline of Highway 16.

No. \_\_\_\_\_  
**21703140020**

Description of corner and witness monuments, references and accessories used to perpetuate the original or re-established location of this corner:

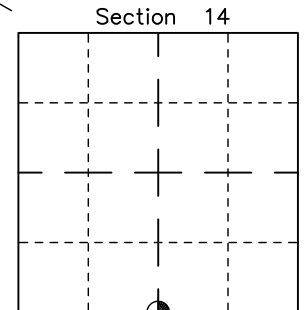
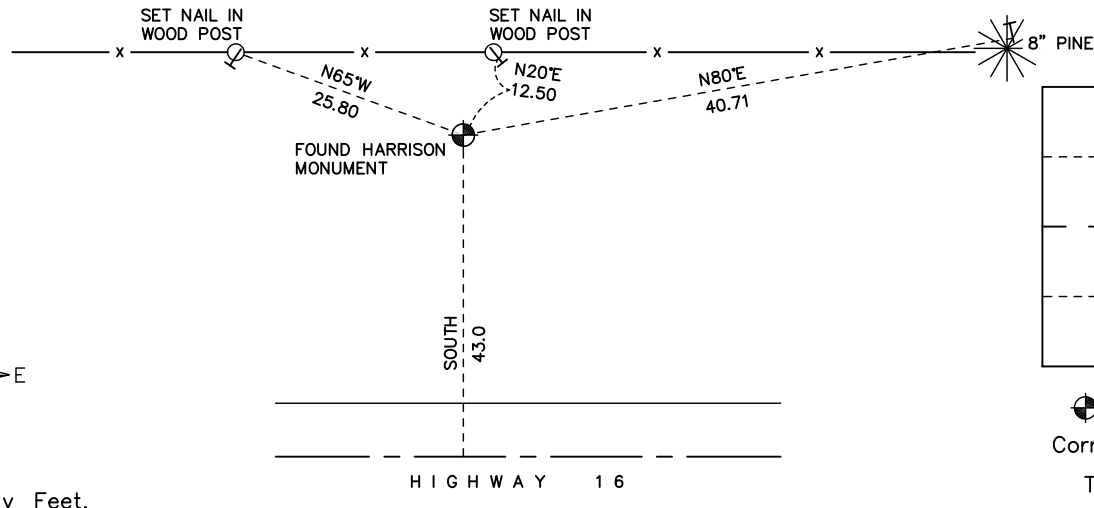
Witnesses to corner location:

Nick Hillmer  
Josh Oslund  
Dan Greenwald

MONROE COUNTY  
COORDINATE SYSTEM  
NAD 1983 (2007)

HARRISON MONUMENT  
Northing (Y) 379029.90  
Easting (X) 655655.63

Base Station - 22 182W  
Northing (Y) 408053.25  
Easting (X) 679287.00



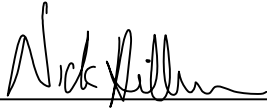
⊙ = LOCATION CORNER  
Corner I.D. S 1/4 14  
T 17 N R 3 W  
Town of Angelo  
Monroe County, WI.

All distances are shown in U.S. Survey Feet.  
Ties are to 60D nails set in trees.  
Bearings are for tie reference purposes only.  
Coordinates were derived from RTK GNSS procedures.

**CERTIFICATE**

I, Nicholas M. Hillmer, do hereby certify that this document and the data contained herein was prepared by me or under my direct supervision and that I am a duly Licensed Land Surveyor under the laws of the State of Wisconsin.

Dated this 23rd day of May, 2013



Nicholas M. Hillmer, P.L.S. 2909  
Anderson Engineering of Minnesota, LLC.

**CERTIFIED LAND CORNER**

History of corner established since Original Government Survey

The 1940's McCoy boundary notes show this position was used for section computations. In April of 1981, Harley A. Sime set a Harrison monument at original government survey distance from the south 1/4 corner of Section 22.

No. 21703150020

Description of evidence found

On August 15th, 2013, Anderson Engineering of Minnesota located the Harrison monument with the top broken off.

Description of corner and witness monuments, references and accessories used to perpetuate the original or re-established location of this corner:

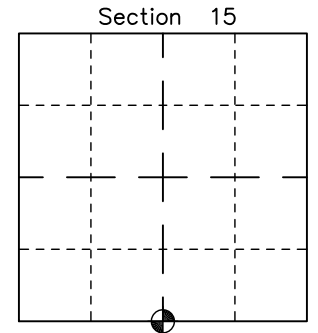
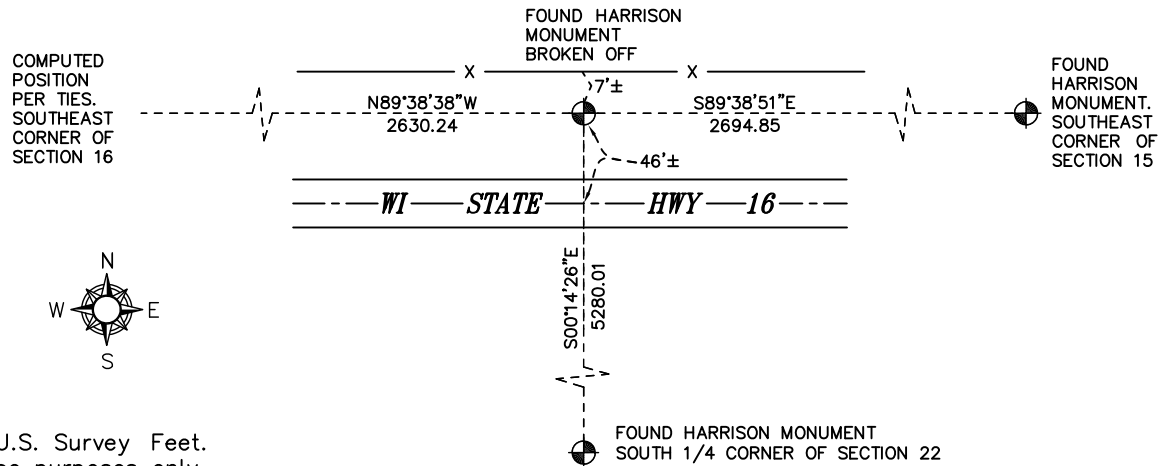
Witnesses to corner location:

Nick Hillmer  
Josh Oslund  
Dan Greenwald

MONROE COUNTY  
COORDINATE SYSTEM  
NAD 1983 (2007)

HARRISON MONUMENT  
Northing (Y) 379063.10  
Easting (X) 650332.35

Base Station - 22 182W  
Northing (Y) 408053.25  
Easting (X) 679287.00



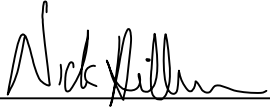
● = LOCATION CORNER  
Corner I.D. S 1/4 15  
T 17 N R 3 W  
Town of Angelo  
Monroe County, WI.

All distances are shown in U.S. Survey Feet.  
Bearings are for tie reference purposes only.  
Coordinates were derived from RTK GNSS procedures.

**CERTIFICATE**

I, Nicholas M. Hillmer, do hereby certify that this document and the data contained herein was prepared by me or under my direct supervision and that I am a duly Licensed Land Surveyor under the laws of the State of Wisconsin.

Dated this 23rd day of May, 2013



Nicholas M. Hillmer, P.L.S. 2909  
Anderson Engineering of Minnesota, LLC.

**CERTIFIED LAND CORNER**

History of corner established since Original Government Survey

Fred Holden was at this corner in 1904 and again in 1910. In June of 1976, Harley Sime found an iron pipe used in previous surveys and accepted it as the corner. Sime replaced the pipe with a Harrison monument.

Description of evidence found

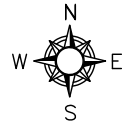
On September 12th, 2012, Anderson Engineering of Minnesota located the Harrison monument 1.2 feet below grade.

No. 21703180000

Description of corner and witness monuments, references and accessories used to perpetuate the original or re-established location of this corner:

Witnesses to corner location:

Nick Hillmer  
Josh Oslund  
Dan Greenwald

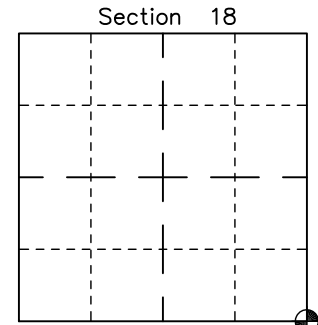
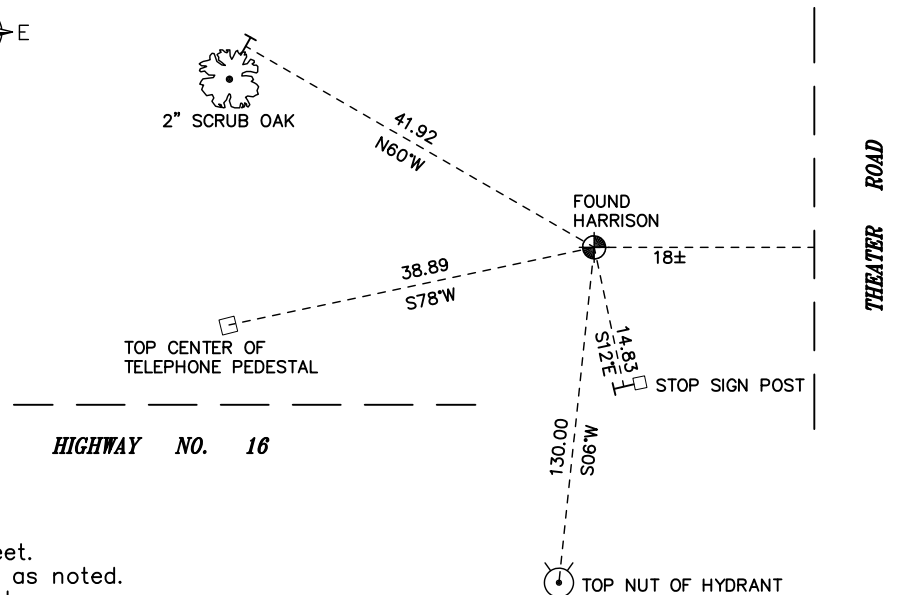


MONROE COUNTY  
COORDINATE SYSTEM  
NAD 1983 (2007)

HARRISON MONUMENT  
Northing (Y) 379146.97  
Easting (X) 637084.67

Base Station - 22 182W  
Northing (Y) 408053.25  
Easting (X) 679287.00

All distances are shown in U.S. Survey Feet.  
Ties are to 60D nails set in trees, except as noted.  
Bearings are for tie reference purposes only.  
Coordinates were derived from RTK GNSS procedures.

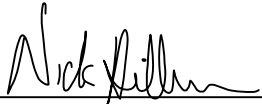


● = LOCATION CORNER  
Corner I.D. SE 18  
T 17 N R 3 W  
Town of Angelo  
Monroe County, WI.

# CERTIFICATE

I, Nicholas M. Hillmer, do hereby certify that this document and the data contained herein was prepared by me or under my direct supervision and that I am a duly Licensed Land Surveyor under the laws of the State of Wisconsin.

Dated this 23rd day of May, 2013



Nicholas M. Hillmer, P.L.S. 2909  
Anderson Engineering of Minnesota, LLC.

# CERTIFIED LAND CORNER

History of corner established since Original Government Survey Fred Holden was at this corner in 1905. Harley Sime found a 3/4 inch iron bar and accepted it as the corner. Sime replaced the iron with a Harrison monument.

## Description of evidence found

On February 27th, 2013, Anderson Engineering of Minnesota located the Harrison monument 0.1 feet above grade and 1 foot north of a witness post with a survey marker sign.

No. \_\_\_\_\_  
**21703190000**

Description of corner and witness monuments, references and accessories used to perpetuate the original or re-established location of this corner:

Witnesses to corner location:

Nick Hillmer  
Josh Oslund  
Dan Greenwald

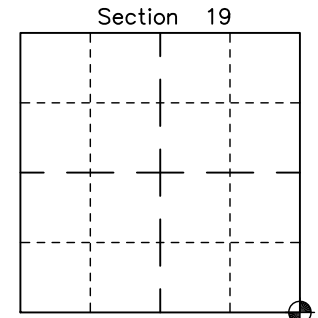
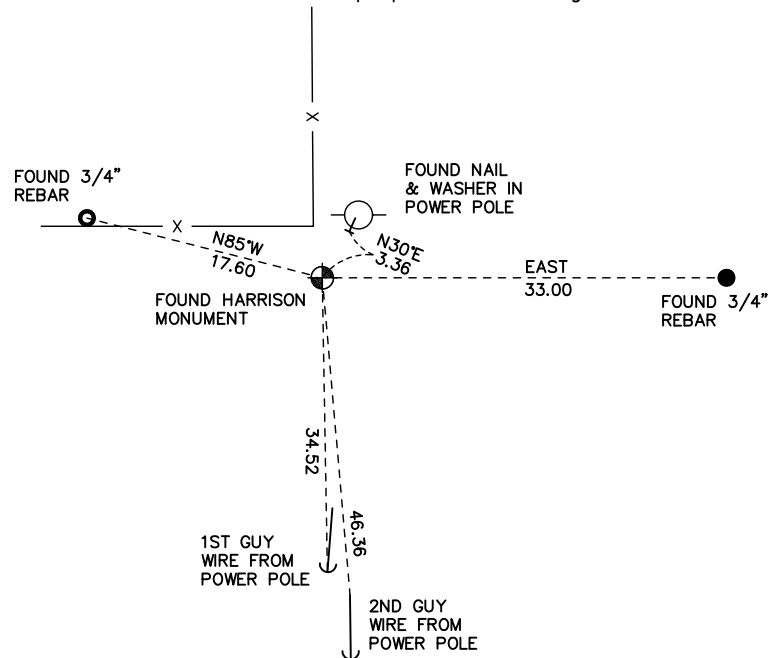
MONROE COUNTY  
COORDINATE SYSTEM  
NAD 1983 (2007)

HARRISON MONUMENT  
Northing (Y) 373854.29  
Easting (X) 637144.41

Base Station - 22 182W  
Northing (Y) 408053.25  
Easting (X) 679287.00



All distances are shown in U.S. Survey Feet.  
Bearings are for tie reference purposes only.  
Coordinates were derived from RTK GNSS procedures.

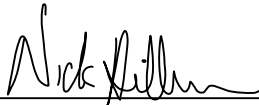


⊗ = LOCATION CORNER  
Corner I.D. SE 19  
T 17 N R 3 W  
Town of Angelo  
Monroe County, WI.

# CERTIFICATE

I, Nicholas M. Hillmer, do hereby certify that this document and the data contained herein was prepared by me or under my direct supervision and that I am a duly Licensed Land Surveyor under the laws of the State of Wisconsin.

Dated this 23rd day of May, 2013



Nicholas M. Hillmer, P.L.S. 2909  
Anderson Engineering of Minnesota, LLC.

# CERTIFIED LAND CORNER

## History of corner established since Original Government Survey

In 1976 Harley Sime found and accepted a pipe used in previous surveys. Sime replaced the pipe with a Harrison monument.

## Description of evidence found

On January 22nd, 2013, Anderson Engineering of Minnesota located the Harrison monument with the top missing 0.3 feet below grade and 0.7 feet east of a witness post with a survey marker sign. The monument is 0.2 feet west of a wood fence post corner of a fence that runs north and east. The monument is 12 feet north of an east-west road.

No. \_\_\_\_\_  
**21703192000**

Description of corner and witness monuments, references and accessories used to perpetuate the original or re-established location of this corner:

Witnesses to corner location:

Nick Hillmer  
Josh Oslund  
Dan Greenwald

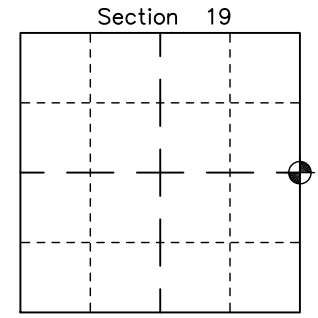
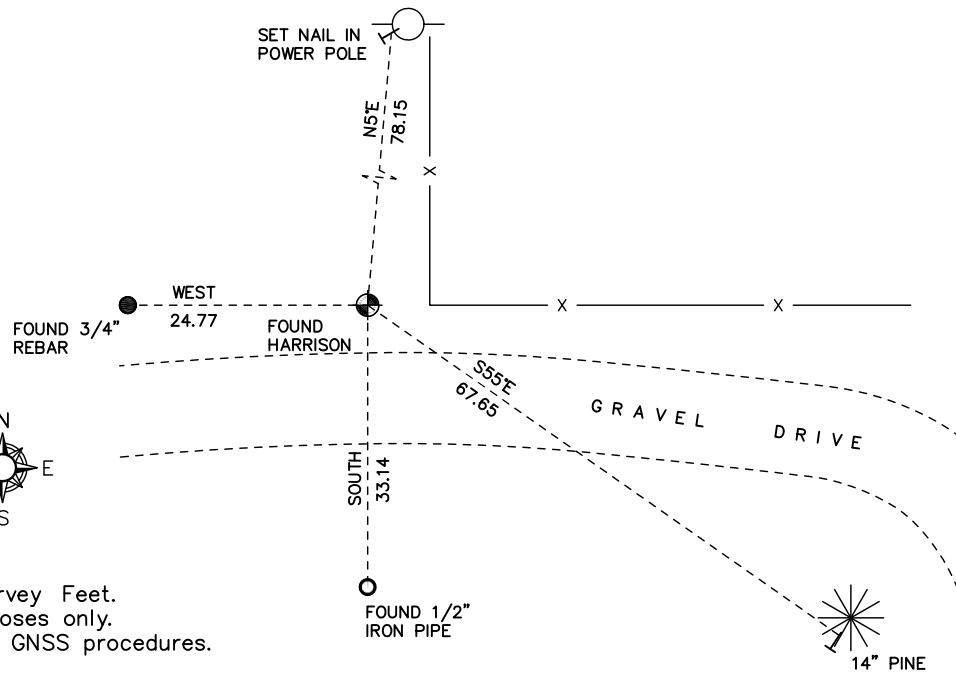
MONROE COUNTY  
COORDINATE SYSTEM  
NAD 1983 (2007)

HARRISON MONUMENT  
Northing (Y) 376516.93  
Easting (X) 637142.74

Base Station - 22 182W  
Northing (Y) 408053.25  
Easting (X) 679287.00



All distances are shown in U.S. Survey Feet.  
Bearings are for tie reference purposes only.  
Coordinates were derived from RTK GNSS procedures.



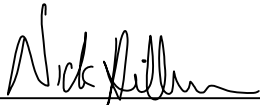
● = LOCATION CORNER  
Corner I.D. E 1/4 19  
T 17 N R 3 W  
Town of Angelo  
Monroe County, WI.



# CERTIFICATE

I, Nicholas M. Hillmer, do hereby certify that this document and the data contained herein was prepared by me or under my direct supervision and that I am a duly Licensed Land Surveyor under the laws of the State of Wisconsin.

Dated this 23rd day of May, 2013



Nicholas M. Hillmer, P.L.S. 2909  
Anderson Engineering of Minnesota, LLC.

# CERTIFIED LAND CORNER

## History of corner established since Original Government Survey

on October 24th, 1986, Gary L. Dechant set a Harrison monument at a prorated distance to the original government survey between the north quarter corner of Section 29 and the northeast corner of Section 28 and on a straight line with the northwest corner and north quarter corner of Section 29.

## Description of evidence found

On February 7th, 2013, Anderson Engineering of Minnesota located the Harrison monument 0.3 feet below grade in a mound with pits to the north, west, south, and east. The monument is 1.0 foot south of a 4 inch square wood post. A broken shovel handle was found 1 foot east of the monument.

No. \_\_\_\_\_  
**21703200000**

Description of corner and witness monuments, references and accessories used to perpetuate the original or re-established location of this corner:

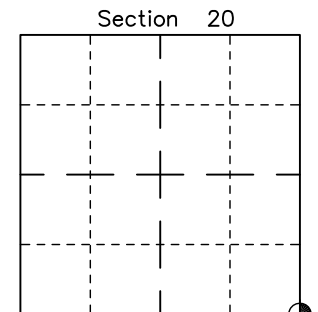
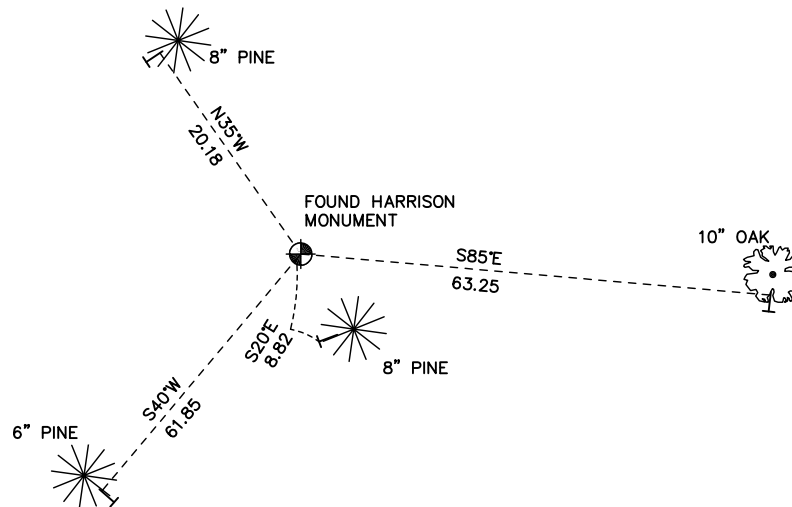
Witnesses to corner location:

Nick Hillmer  
Josh Oslund  
Dan Greenwald

MONROE COUNTY  
COORDINATE SYSTEM  
NAD 1983 (2007)

HARRISON MONUMENT  
Northing (Y) 373841.19  
Easting (X) 642444.45

Base Station - 22 182W  
Northing (Y) 408053.25  
Easting (X) 679287.00



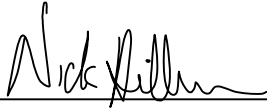
⊕ = LOCATION CORNER  
Corner I.D. SE 20  
T 17 N R 3 W  
Town of Angelo  
Monroe County, WI.

All distances are shown in U.S. Survey Feet.  
Ties are to 60D nails set in trees.  
Bearings are for tie reference purposes only.  
Coordinates were derived from RTK GNSS procedures.

**CERTIFICATE**

I, Nicholas M. Hillmer, do hereby certify that this document and the data contained herein was prepared by me or under my direct supervision and that I am a duly Licensed Land Surveyor under the laws of the State of Wisconsin.

Dated this 23rd day of May, 2013



Nicholas M. Hillmer, P.L.S. 2909  
Anderson Engineering of Minnesota, LLC.

**CERTIFIED LAND CORNER**

History of corner established since Original Government Survey

Bryan Meyer set this corner on line and equidistant between the northeast and southeast corners of Section 21.

No. 21703212000

**Description of evidence found**

On September 11th, 2012, Anderson Engineering of Minnesota located the Harrison monument with the top broken off. The monument is 12+/- feet west of a sandy two track trail.

Description of corner and witness monuments, references and accessories used to perpetuate the original or re-established location of this corner:

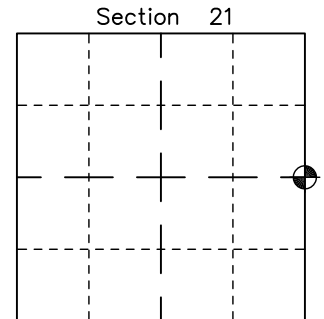
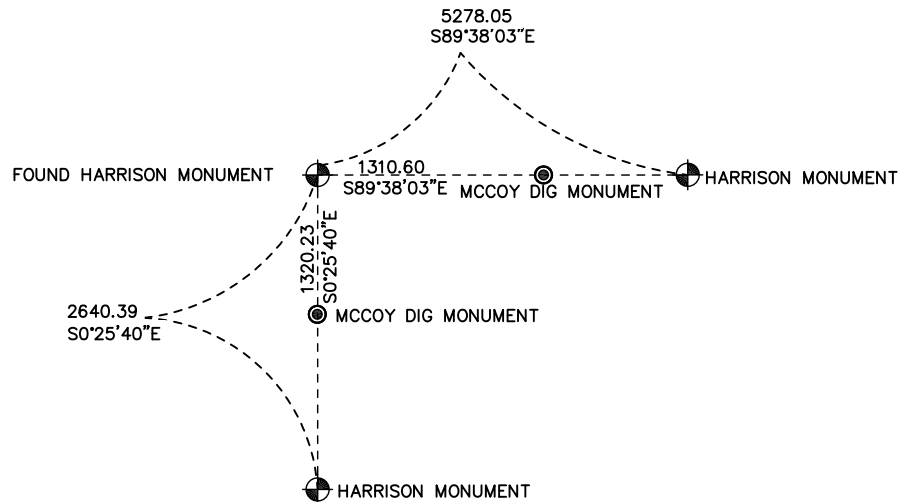
Witnesses to corner location:

Nick Hillmer  
Josh Oslund  
Dan Greenwald

MONROE COUNTY  
COORDINATE SYSTEM  
NAD 1983 (2007)

HARRISON MONUMENT  
Northing (Y) 376439.45  
Easting (X) 647722.27

Base Station - 22 182W  
Northing (Y) 408053.25  
Easting (X) 679287.00



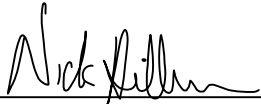
⊙ = LOCATION CORNER  
 Corner I.D. E 1/4 21  
T 17 N R 3 W  
 Town of Angelo  
 Monroe County, WI.

All distances are shown in U.S. Survey Feet.  
 Bearings are for tie reference purposes only.  
 Coordinates were derived from RTK GNSS procedures.

# CERTIFICATE

I, Nicholas M. Hillmer, do hereby certify that this document and the data contained herein was prepared by me or under my direct supervision and that I am a duly Licensed Land Surveyor under the laws of the State of Wisconsin.

Dated this 23rd day of May, 2013



Nicholas M. Hillmer, P.L.S. 2909  
Anderson Engineering of Minnesota, LLC.

# CERTIFIED LAND CORNER

## History of corner established since Original Government Survey

O.R. Dahl was at this corner in March of 1868. Henry Schroeder was at this corner in April of 1897. In April of 1902 Fred Holden shows a 3 inch iron pipe at this corner. In May of 1980 William Jung found the 3 inch pipe and replaced it with a Harrison monument. In 1997 Douglas Mallet reset this corner using ties after road construction.

## Description of evidence found

On August 31st, 2012, Anderson Engineering of Minnesota located the Harrison monument just below the road surface where the road had been previously cold patched.

No. \_\_\_\_\_  
**21703220020**

Description of corner and witness monuments, references and accessories used to perpetuate the original or re-established location of this corner:

Witnesses to corner location:

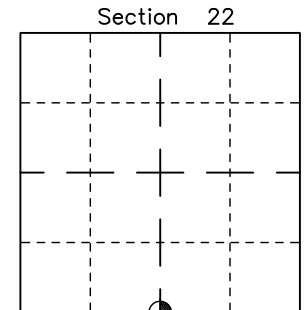
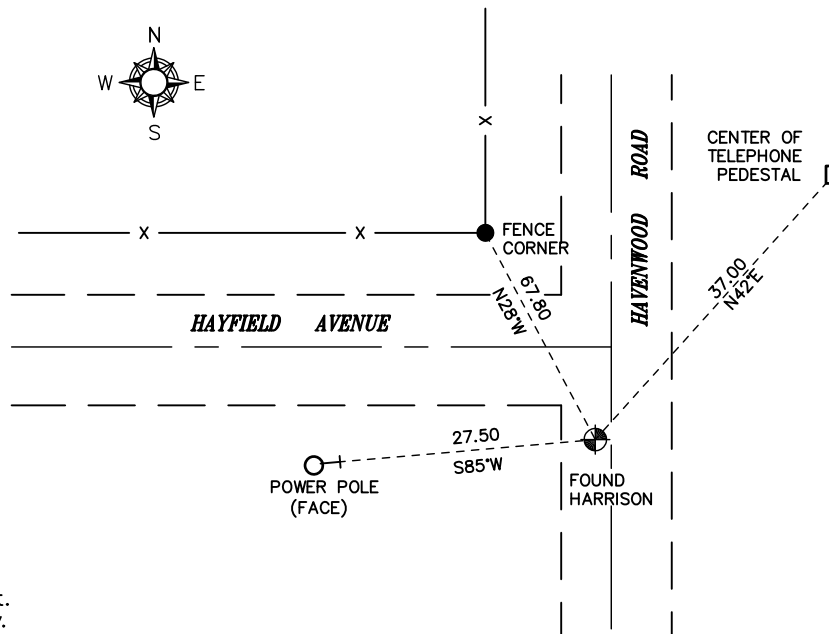
Nick Hillmer  
Josh Oslund  
Dan Greenwald

MONROE COUNTY  
COORDINATE SYSTEM  
NAD 1983 (2007)

HARRISON MONUMENT  
Northing (Y) 373783.14  
Easting (X) 650354.51

Base Station - 22 182W  
Northing (Y) 408053.25  
Easting (X) 679287.00

All distances are shown in U.S. Survey Feet.  
Bearings are for tie reference purposes only.  
Coordinates were derived from RTK GNSS procedures.

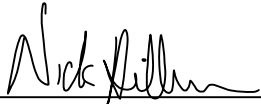


⊙ = LOCATION CORNER  
Corner I.D. S 1/4 22  
T 17 N R 3 W  
Town of Angelo  
Monroe County, WI.

# CERTIFICATE

I, Nicholas M. Hillmer, do hereby certify that this document and the data contained herein was prepared by me or under my direct supervision and that I am a duly Licensed Land Surveyor under the laws of the State of Wisconsin.

Dated this 23rd day of May, 2013



Nicholas M. Hillmer, P.L.S. 2909  
Anderson Engineering of Minnesota, LLC.

# CERTIFIED LAND CORNER

## History of corner established since Original Government Survey

The 1940's McCoy boundary notes show a corner at this location. In April of 1981 Harley Sime found the McCoy marker and did not accept the corner after surveying the section. Sime set a Harrison monument by using single proportionate measurement.

## Description of evidence found

On August 31st, 2012, Anderson Engineering of Minnesota located the Harrison monument flush with the ground and 0.2 feet south of a metal post with survey marker sign. The McCoy monument shown on Sime's 1981 certified land corner certificate was not found.

No. \_\_\_\_\_  
**21703222000**

Description of corner and witness monuments, references and accessories used to perpetuate the original or re-established location of this corner:

Witnesses to corner location:

Nick Hillmer  
Josh Oslund  
Dan Greenwald

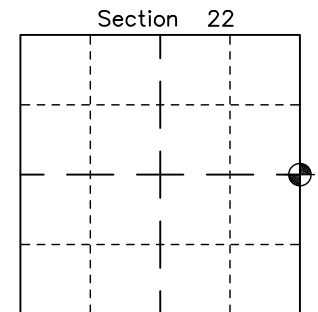
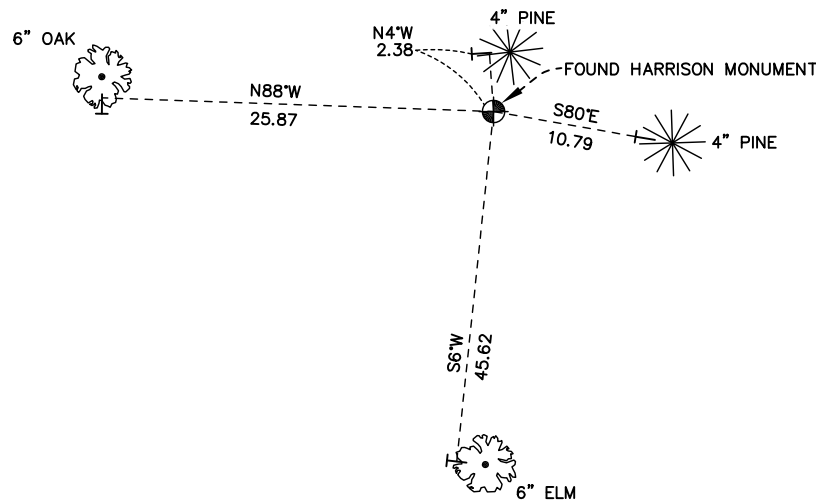
MONROE COUNTY  
COORDINATE SYSTEM  
NAD 1983 (2007)

HARRISON MONUMENT  
Northing (Y) 376405.76  
Easting (X) 653000.20

Base Station - 22 182W  
Northing (Y) 408053.25  
Easting (X) 679287.00



All distances are shown in U.S. Survey Feet.  
Ties are to 60D nails set in trees.  
Bearings are for tie reference purposes only.  
Coordinates were derived from RTK GNSS procedures.

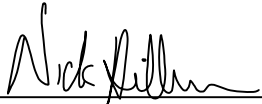


● = LOCATION CORNER  
Corner I.D. E 1/4 22  
T 17 N R 3 W  
Town of Angelo  
Monroe County, WI.

# CERTIFICATE

I, Nicholas M. Hillmer, do hereby certify that this document and the data contained herein was prepared by me or under my direct supervision and that I am a duly Licensed Land Surveyor under the laws of the State of Wisconsin.

Dated this 23rd day of May, 2013



Nicholas M. Hillmer, P.L.S. 2909  
Anderson Engineering of Minnesota, LLC.

# CERTIFIED LAND CORNER

## History of corner established since Original Government Survey

In 1981 Harley Sime set a Harrison monument on line and proportionally to the original notes between the South Quarter of Section 22 and the southeast corner of Section 23.

## Description of evidence found

On March 12th, 2013, Anderson Engineering of Minnesota located the Harrison monument in a mound with pits to the north, south, east, and west. The monument is 0.3 feet north of a witness post with a survey marker sign.

No. \_\_\_\_\_  
**21703220000**

Description of corner and witness monuments, references and accessories used to perpetuate the original or re-established location of this corner:

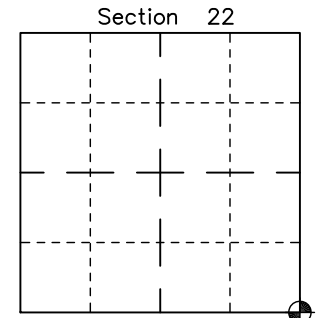
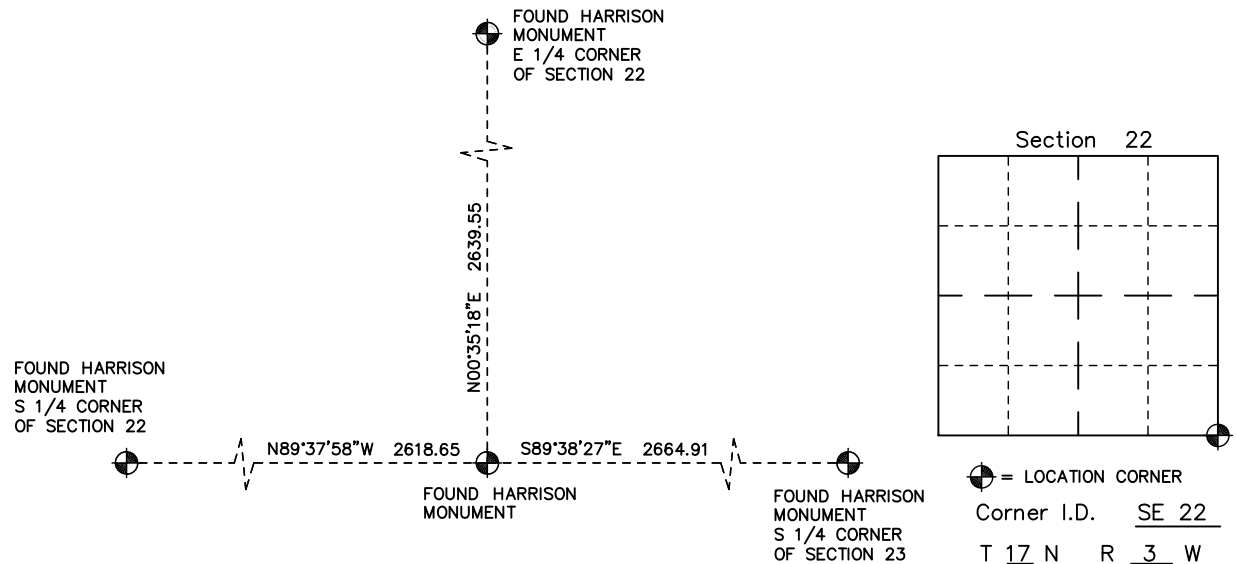
Witnesses to corner location:

Nick Hillmer  
Josh Oslund  
Dan Greenwald

MONROE COUNTY  
COORDINATE SYSTEM  
NAD 1983 (2007)

HARRISON MONUMENT  
Northing (Y) 373766.36  
Easting (X) 652973.11

Base Station - 22 182W  
Northing (Y) 408053.25  
Easting (X) 679287.00



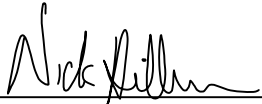
● = LOCATION CORNER  
Corner I.D. SE 22  
T 17 N R 3 W  
Town of Angelo  
Monroe County, WI.

All distances are shown in U.S. Survey Feet.  
Bearings are for tie reference purposes only.  
Coordinates were derived from RTK GNSS procedures.

# CERTIFICATE

I, Nicholas M. Hillmer, do hereby certify that this document and the data contained herein was prepared by me or under my direct supervision and that I am a duly Licensed Land Surveyor under the laws of the State of Wisconsin.

Dated this 23rd day of May, 2013



Nicholas M. Hillmer, P.L.S. 2909  
Anderson Engineering of Minnesota, LLC.

# CERTIFIED LAND CORNER

History of corner established since Original Government Survey

Harley A. Sime accepted the occupied fence corner as the best available evidence. Sime set a Harrison monument at this location in 1980.

Description of evidence found

On February 6th, 2013, Anderson Engineering of Minnesota located the Harrison monument flush with the ground and 0.65 feet northeast of a round wood corner fence post of a barbed wire fence that runs south and west.

No. \_\_\_\_\_  
**21703230000**

Description of corner and witness monuments, references and accessories used to perpetuate the original or re-established location of this corner:

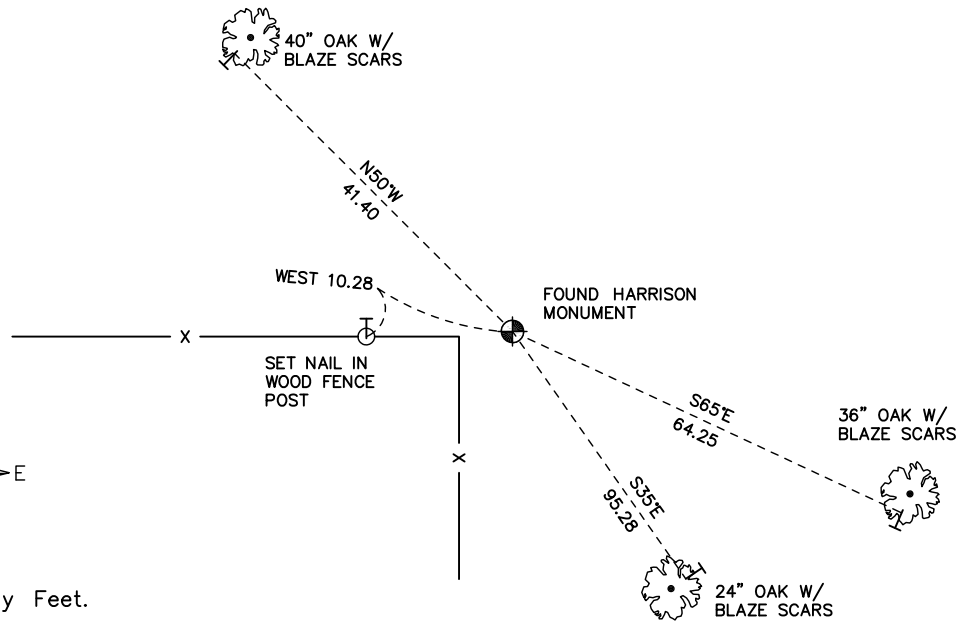
Witnesses to corner location:

Nick Hillmer  
Josh Oslund  
Dan Greenwald

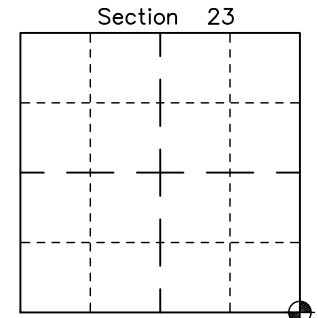
MONROE COUNTY  
COORDINATE SYSTEM  
NAD 1983 (2007)

HARRISON MONUMENT  
Northing (Y) 373733.02  
Easting (X) 658302.77

Base Station - 22 182W  
Northing (Y) 408053.25  
Easting (X) 679287.00



All distances are shown in U.S. Survey Feet.  
Ties are to 60D nails set in trees.  
Bearings are for tie reference purposes only.  
Coordinates were derived from RTK GNSS procedures.

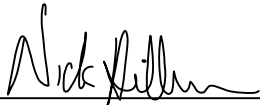


● = LOCATION CORNER  
Corner I.D. SE 23  
T 17 N R 3 W  
Town of Angelo  
Monroe County, WI.

**CERTIFICATE**

I, Nicholas M. Hillmer, do hereby certify that this document and the data contained herein was prepared by me or under my direct supervision and that I am a duly Licensed Land Surveyor under the laws of the State of Wisconsin.

Dated this 23rd day of May, 2013



Nicholas M. Hillmer, P.L.S. 2909  
Anderson Engineering of Minnesota, LLC.

**CERTIFIED LAND CORNER**

History of corner established since Original Government Survey

Harley Sime set a Harrison monument by single proportion measurement in 1981.

Description of evidence found

On February 6th, 2013, Anderson Engineering of Minnesota located the Harrison monument 0.5 feet above grade and 0.4 feet northeast of a witness post with a survey marker sign. Pits were found to the north, south, and west. The monument is 112 feet (horizontal) west of the center of Hilltop Road.

No. \_\_\_\_\_  
**21703230020**

Description of corner and witness monuments, references and accessories used to perpetuate the original or re-established location of this corner:

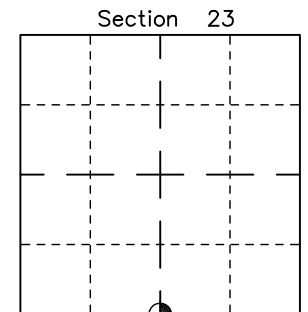
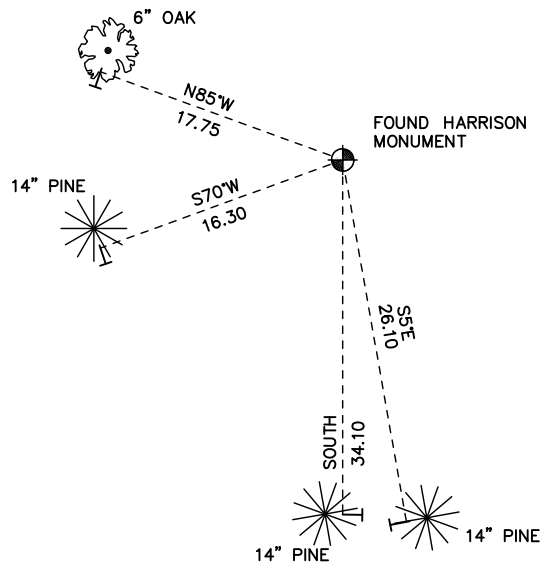
Witnesses to corner location:

Nick Hillmer  
Josh Oslund  
Dan Greenwald

MONROE COUNTY  
COORDINATE SYSTEM  
NAD 1983 (2007)

HARRISON MONUMENT  
Northing (Y) 373749.65  
Easting (X) 655637.97

Base Station - 22 182W  
Northing (Y) 408053.25  
Easting (X) 679287.00



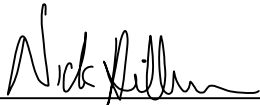
⊙ = LOCATION CORNER  
Corner I.D. S 1/4 23  
T 17 N R 3 W  
Town of Angelo  
Monroe County, WI.

All distances are shown in U.S. Survey Feet.  
Ties are to 60D nails set in trees.  
Bearings are for tie reference purposes only.  
Coordinates were derived from RTK GNSS procedures.

# CERTIFICATE

I, Nicholas M. Hillmer, do hereby certify that this document and the data contained herein was prepared by me or under my direct supervision and that I am a duly Licensed Land Surveyor under the laws of the State of Wisconsin.

Dated this 23rd day of May, 2013



Nicholas M. Hillmer, P.L.S. 2909  
Anderson Engineering of Minnesota, LLC.

# CERTIFIED LAND CORNER

History of corner established since Original Government Survey

Harold Sime set a Harrison monument by single proportion measurement in 1981.

No. 21703232000

## Description of evidence found

On February 6th, 2013, Anderson Engineering of Minnesota located the Harrison monument 0.2 feet below grade.

Description of corner and witness monuments, references and accessories used to perpetuate the original or re-established location of this corner:

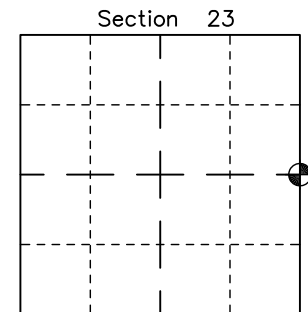
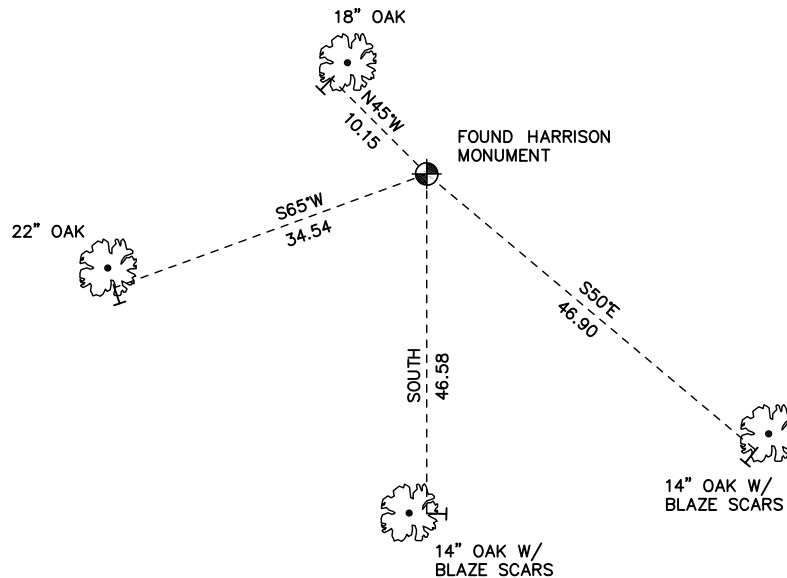
Witnesses to corner location:

Nick Hillmer  
Josh Oslund  
Dan Greenwald

MONROE COUNTY  
COORDINATE SYSTEM  
NAD 1983 (2007)

HARRISON MONUMENT  
Northing (Y) 376373.12  
Easting (X) 658293.43

Base Station - 22 182W  
Northing (Y) 408053.25  
Easting (X) 679287.00



● = LOCATION CORNER  
Corner I.D. E 1/4 23  
T 17 N R 3 W  
Town of Angelo  
Monroe County, WI.

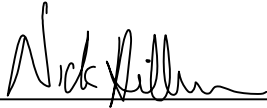
All distances are shown in U.S. Survey Feet.  
Ties are to 60D nails set in trees.  
Bearings are for tie reference purposes only.  
Coordinates were derived from RTK GNSS procedures.



**CERTIFICATE**

I, Nicholas M. Hillmer, do hereby certify that this document and the data contained herein was prepared by me or under my direct supervision and that I am a duly Licensed Land Surveyor under the laws of the State of Wisconsin.

Dated this 23rd day of May, 2013



Nicholas M. Hillmer, P.L.S. 2909  
Anderson Engineering of Minnesota, LLC.

**CERTIFIED LAND CORNER**

**History of corner established since Original Government Survey**

In 1971, Harley Sime set a Harrison monument off the end of the fence post of a fence line going to the north.

No. 21703240020

**Description of evidence found**

On February 6th, 2013, Anderson Engineering of Minnesota located the Harrison monument 0.3 feet below grade.

Description of corner and witness monuments, references and accessories used to perpetuate the original or re-established location of this corner:

Witnesses to corner location:

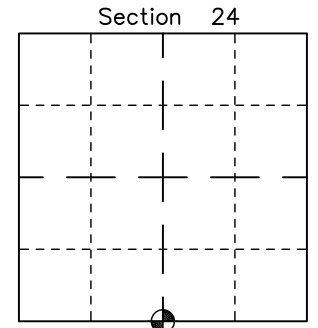
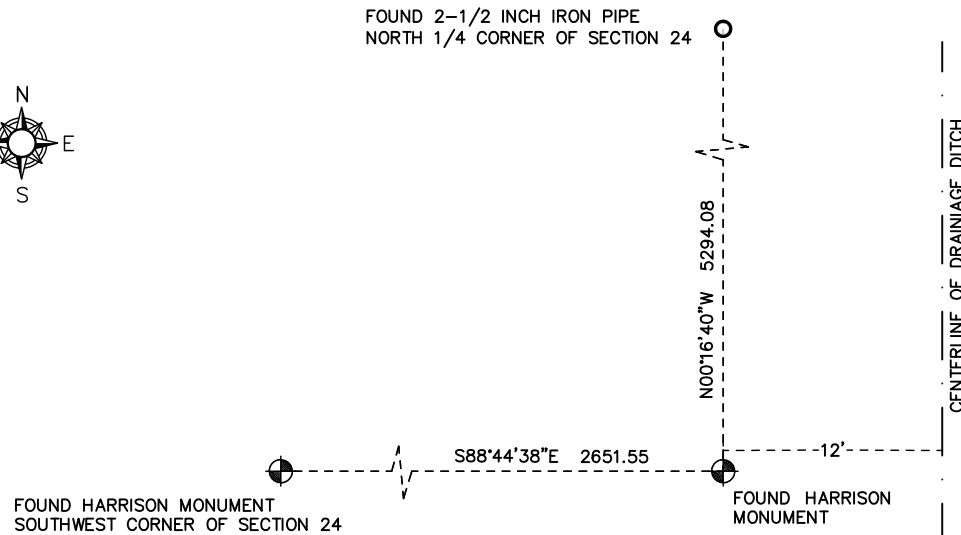
Nick Hillmer  
Josh Oslund  
Dan Greenwald



MONROE COUNTY  
COORDINATE SYSTEM  
NAD 1983 (2007)

HARRISON MONUMENT  
Northing (Y) 373674.89  
Easting (X) 660953.68

Base Station - 22 182W  
Northing (Y) 408053.25  
Easting (X) 679287.00



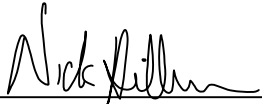
● = LOCATION CORNER  
Corner I.D. S 1/4 24  
T 17 N R 3 W  
Town of Angelo  
Monroe County, WI.

All distances are shown in U.S. Survey Feet.  
Bearings are for tie reference purposes only.  
Coordinates were derived from RTK GNSS procedures.

# CERTIFICATE

I, Nicholas M. Hillmer, do hereby certify that this document and the data contained herein was prepared by me or under my direct supervision and that I am a duly Licensed Land Surveyor under the laws of the State of Wisconsin.

Dated this 23rd day of May, 2013



Nicholas M. Hillmer, P.L.S. 2909  
Anderson Engineering of Minnesota, LLC.

# CERTIFIED LAND CORNER

## History of corner established since Original Government Survey

William Jung surveyed Sections 19 and 24 in 1980 and shows a computed location for this corner. Bryan Meyer set a Harrison monument at the computed location of Jung's section breakdown in 1984.

## Description of evidence found

On February 6th, 2013, Anderson Engineering of Minnesota located the Harrison monument 0.8 feet below grade and 50 feet south of Silver Creek.

No. \_\_\_\_\_  
**21703242000**

Description of corner and witness monuments, references and accessories used to perpetuate the original or re-established location of this corner:

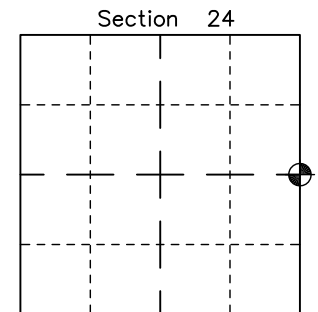
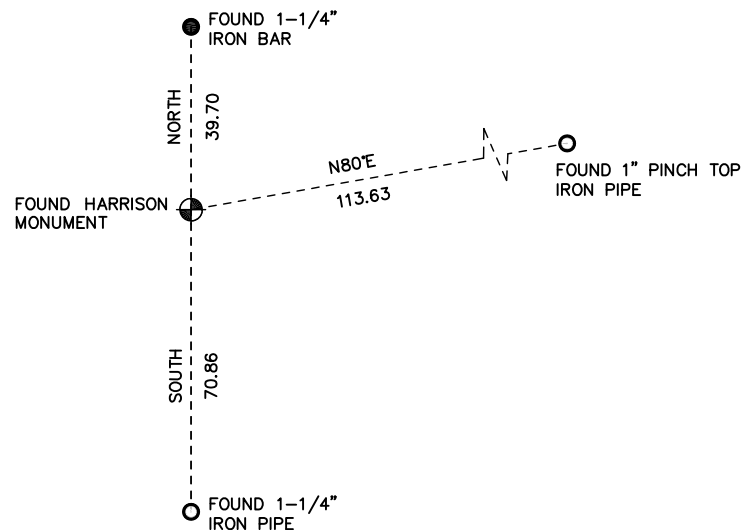
Witnesses to corner location:

Nick Hillmer  
Josh Oslund  
Dan Greenwald

MONROE COUNTY  
COORDINATE SYSTEM  
NAD 1983 (2007)

HARRISON MONUMENT  
Northing (Y) 376284.81  
Easting (X) 663534.46

Base Station - 22 182W  
Northing (Y) 408053.25  
Easting (X) 679287.00



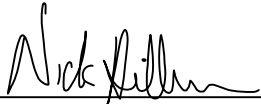
⊕ = LOCATION CORNER  
Corner I.D. E 1/4 24  
T 17 N R 3 W  
Town of Angelo  
Monroe County, WI.

All distances are shown in U.S. Survey Feet.  
Bearings are for tie reference purposes only.  
Coordinates were derived from RTK GNSS procedures.

# CERTIFICATE

I, Nicholas M. Hillmer, do hereby certify that this document and the data contained herein was prepared by me or under my direct supervision and that I am a duly Licensed Land Surveyor under the laws of the State of Wisconsin.

Dated this 23rd day of May, 2013



Nicholas M. Hillmer, P.L.S. 2909  
Anderson Engineering of Minnesota, LLC.

# CERTIFIED LAND CORNER

## History of corner established since Original Government Survey

Gary Dechant found an original bearing tree and reset a Harrison monument per bearing and distance. Dechant states that the Fort McCoy marker found at the SW corner of NW 1/4-NW 1/4 fits extremely well for alignment and for being half way between this location and the West 1/4 of Section 3.

## Description of evidence found

On March 12th, 2013, Anderson Engineering of Minnesota located the Harrison monument 0.3 feet above grade and 0.45 foot north of a witness post with a survey marker sign.

No. \_\_\_\_\_  
**21703270000**

Description of corner and witness monuments, references and accessories used to perpetuate the original or re-established location of this corner:

Witnesses to corner location:

Nick Hillmer  
Josh Oslund  
Dan Greenwald

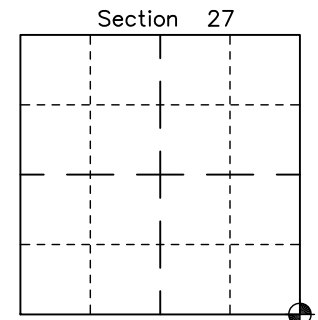
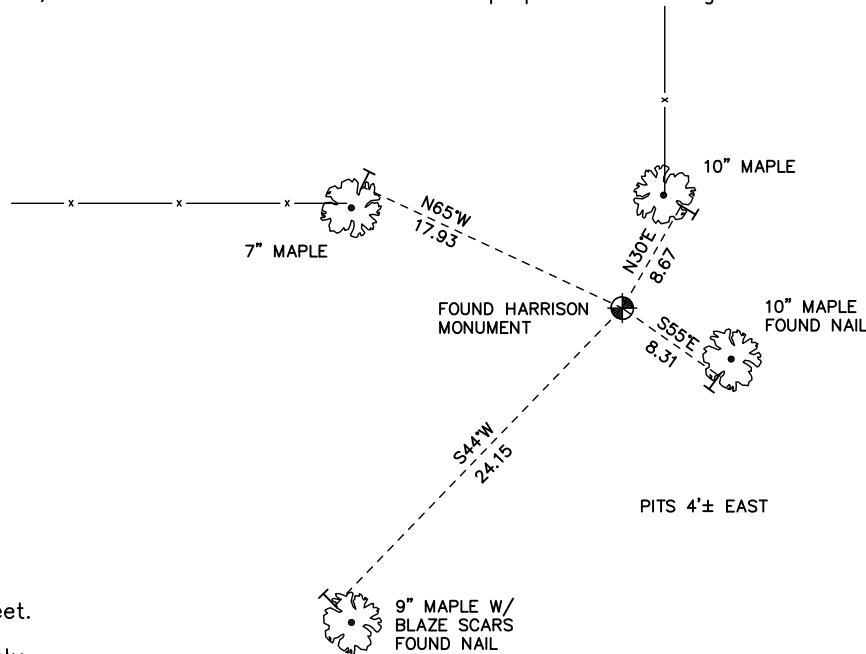
MONROE COUNTY  
COORDINATE SYSTEM  
NAD 1983 (2007)

HARRISON MONUMENT  
Northing (Y) 368493.17  
Easting (X) 653008.13

Base Station - 22 182W  
Northing (Y) 408053.25  
Easting (X) 679287.00



All distances are shown in U.S. Survey Feet.  
Ties are to nails set or found in trees.  
Bearings are for tie reference purposes only.  
Coordinates were derived from RTK GNSS procedures.

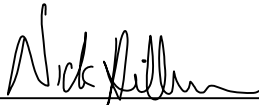


⊙ = LOCATION CORNER  
Corner I.D. SE 27  
T 17 N R 3 W  
Town of Angelo  
Monroe County, WI.

# CERTIFICATE

I, Nicholas M. Hillmer, do hereby certify that this document and the data contained herein was prepared by me or under my direct supervision and that I am a duly Licensed Land Surveyor under the laws of the State of Wisconsin.

Dated this 23rd day of May, 2013



Nicholas M. Hillmer, P.L.S. 2909  
Anderson Engineering of Minnesota, LLC.

# CERTIFIED LAND CORNER

History of corner established since Original Government Survey

Gary Dechant set a Harrison monument by single proportion measurement. The location falls 10 feet +/- north of what appears to be an old east-west fence line.

Description of evidence found

On March 12th, 2013, Anderson Engineering of Minnesota located the Harrison monument 0.3 feet above grade and 0.7 feet north of a witness post with a survey marker sign.

No. \_\_\_\_\_  
**21703272000**

Description of corner and witness monuments, references and accessories used to perpetuate the original or re-established location of this corner:

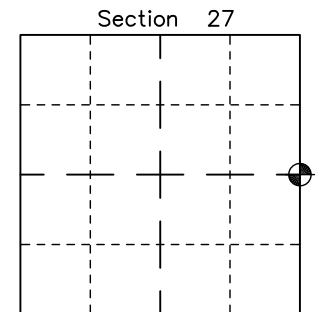
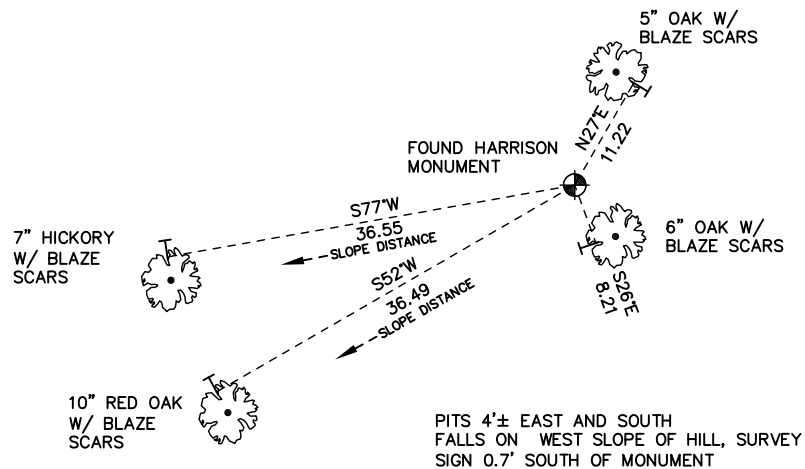
Witnesses to corner location:

Nick Hillmer  
Josh Oslund  
Dan Greenwald

MONROE COUNTY  
COORDINATE SYSTEM  
NAD 1983 (2007)

HARRISON MONUMENT  
Northing (Y) 371130.34  
Easting (X) 652991.04

Base Station - 22 182W  
Northing (Y) 408053.25  
Easting (X) 679287.00



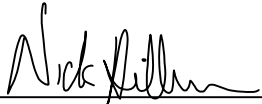
● = LOCATION CORNER  
Corner I.D. E 1/4 27  
T 17 N R 3 W  
Town of Angelo  
Monroe County, WI.

All distances are shown in U.S. Survey Feet.  
Ties are to found nails in trees.  
Bearings are for tie reference purposes only.  
Coordinates were derived from RTK GNSS procedures.

**CERTIFICATE**

I, Nicholas M. Hillmer, do hereby certify that this document and the data contained herein was prepared by me or under my direct supervision and that I am a duly Licensed Land Surveyor under the laws of the State of Wisconsin.

Dated this 23rd day of May, 2013



Nicholas M. Hillmer, P.L.S. 2909  
Anderson Engineering of Minnesota, LLC.

**CERTIFIED LAND CORNER**

History of corner established since Original Government Survey

In 1986 Gary Dechant accepted the remains of a fence corner as the best available evidence. Dechant set a Harrison monument.

Description of evidence found

On February 7th, 2013, Anderson Engineering of Minnesota located the Harrison monument flush with the ground in a mound and halfway up a slope. Remnants of a barbed wire fence were found in a tree 6 feet east of the monument. The fence appears to have run east-west.

No. \_\_\_\_\_  
**21703292000**

Description of corner and witness monuments, references and accessories used to perpetuate the original or re-established location of this corner:

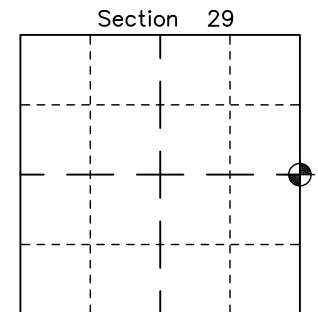
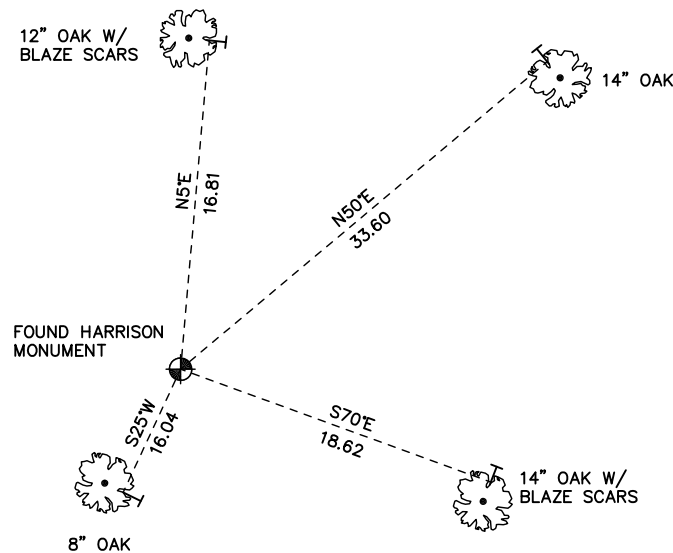
Witnesses to corner location:

Nick Hillmer  
Josh Oslund  
Dan Greenwald

MONROE COUNTY  
COORDINATE SYSTEM  
NAD 1983 (2007)

HARRISON MONUMENT  
Northing (Y) 371230.64  
Easting (X) 642419.47

Base Station - 22 182W  
Northing (Y) 408053.25  
Easting (X) 679287.00



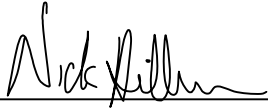
● = LOCATION CORNER  
Corner I.D. E 1/4 29  
T 17 N R 3 W  
Town of Angelo  
Monroe County, WI.

All distances are shown in U.S. Survey Feet.  
Ties are to 60D nails set in trees.  
Bearings are for tie reference purposes only.  
Coordinates were derived from RTK GNSS procedures.

# CERTIFICATE

I, Nicholas M. Hillmer, do hereby certify that this document and the data contained herein was prepared by me or under my direct supervision and that I am a duly Licensed Land Surveyor under the laws of the State of Wisconsin.

Dated this 23rd day of May, 2013



Nicholas M. Hillmer, P.L.S. 2909  
Anderson Engineering of Minnesota, LLC.

# CERTIFIED LAND CORNER

## History of corner established since Original Government Survey

Fred Holden shows bearing trees for this corner in his notes of a April 1902 survey. In September of 1981 William Jung accepted an old occupied corner as the best available evidence of the original government corner. The distance south to the east quarter corner is long (2681.08). The old Fort McCoy survey notes show the McCoy surveyors found evidence of a fence about 1339 feet south of this corner.  $2681.08/2 = 1340.54$ , which would check close to the 1339 feet and would verify the long 1/2 mile measurement. Jung set a Harrison monument at the intersection of an old wire fence to the north and a wind row to the east and dug pits to the north, south, east, and west.

## Description of evidence found

On February 7th, 2013, Anderson Engineering of Minnesota located the Harrison monument flush with the ground in a mound 0.7 feet east of a 4x4 square wooden post with survey marker sign. Pits were found on the north, south, east, and west sides of the mound.

No. 21703290000

Description of corner and witness monuments, references and accessories used to perpetuate the original or re-established location of this corner:

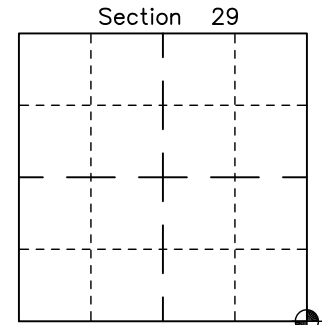
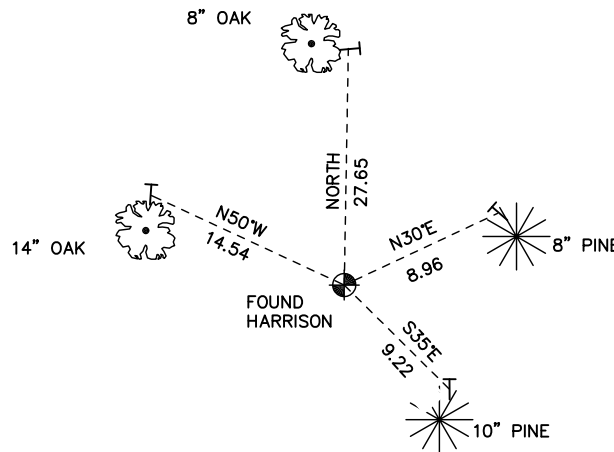
Witnesses to corner location:

Nick Hillmer  
Josh Oslund  
Dan Greenwald

MONROE COUNTY  
COORDINATE SYSTEM  
NAD 1983 (2007)

HARRISON MONUMENT  
Northing (Y) 368589.38  
Easting (X) 642457.61

Base Station - 22 182W  
Northing (Y) 408053.25  
Easting (X) 679287.00



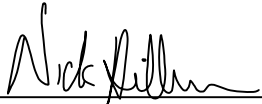
⊕ = LOCATION CORNER  
Corner I.D. SE 29  
T 17 N R 3 W  
Town of Angelo  
Monroe County, WI.

All distances are shown in U.S. Survey Feet.  
Ties are to 60D nails set in trees.  
Bearings are for tie reference purposes only.  
Coordinates were derived from RTK GNSS procedures.

# CERTIFICATE

I, Nicholas M. Hillmer, do hereby certify that this document and the data contained herein was prepared by me or under my direct supervision and that I am a duly Licensed Land Surveyor under the laws of the State of Wisconsin.

Dated this 23rd day of May, 2013



Nicholas M. Hillmer, P.L.S. 2909  
Anderson Engineering of Minnesota, LLC.

# CERTIFIED LAND CORNER

History of corner established since Original Government Survey

Harley Sime set a Harrison monument in the centerline of a town road and on line with a tree line to the east in 1981.

No. \_\_\_\_\_  
**21703312000**

## Description of evidence found

On January 22nd, 2013, Anderson Engineering of Minnesota located the Harrison monument 4 inches below grade in the center of Janus Avenue.

Description of corner and witness monuments, references and accessories used to perpetuate the original or re-established location of this corner:

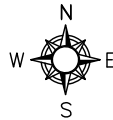
Witnesses to corner location:

Nick Hillmer  
Josh Oslund  
Dan Greenwald

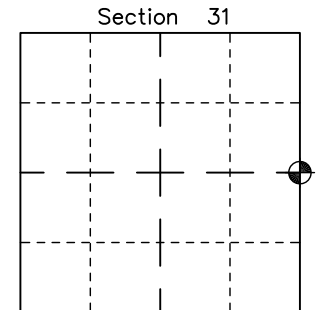
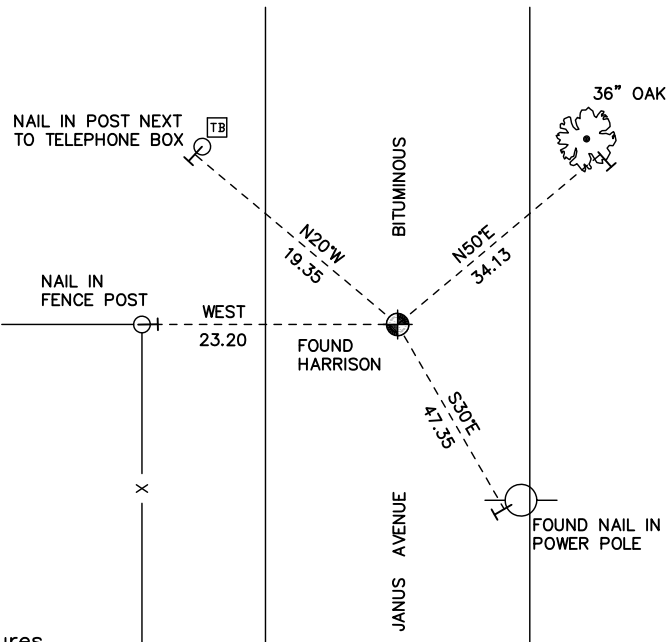
MONROE COUNTY  
COORDINATE SYSTEM  
NAD 1983 (2007)

HARRISON MONUMENT  
Northing (Y) 365925.46  
Easting (X) 637158.70

Base Station - 22 182W  
Northing (Y) 408053.25  
Easting (X) 679287.00



All distances are shown in U.S. Survey Feet.  
Bearings are for tie reference purposes only.  
Coordinates were derived from RTK GNSS procedures.

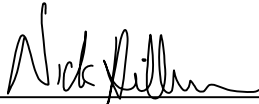


● = LOCATION CORNER  
Corner I.D. E 1/4 31  
T 17 N R 3 W  
Town of Angelo  
Monroe County, WI.

# CERTIFICATE

I, Nicholas M. Hillmer, do hereby certify that this document and the data contained herein was prepared by me or under my direct supervision and that I am a duly Licensed Land Surveyor under the laws of the State of Wisconsin.

Dated this 23rd day of May, 2013



Nicholas M. Hillmer, P.L.S. 2909  
Anderson Engineering of Minnesota, LLC.

# CERTIFIED LAND CORNER

## History of corner established since Original Government Survey

Fred Holden was here in 1905. Fred Zietlow was here in 1971 and set a 3/4 inch iron bar in the centerline of the road and online with a fence to the north. Harley Sime found the iron bar and replaced it with a Harrison monument. In 1996 Bryan Meyer received notice that the Town Road running along the south line of Sections 32 and 33 west of STH "71" would be milled. Meyer set 3/4 inch iron bars north and south as new references and removed the Harrison monument. After the road work was completed he set a 1 1/2 inch by 30 inch round iron bar.

## Description of evidence found

On January 22nd, 2013, Anderson Engineering of Minnesota located the 1 1/2 inch round iron bar 0.3 feet below grade in the center of an east-west bituminous road. PK nails were also found 1.0 foot west and 1.0 foot south of the monument.

No. \_\_\_\_\_  
**21703320000**

Description of corner and witness monuments, references and accessories used to perpetuate the original or re-established location of this corner:

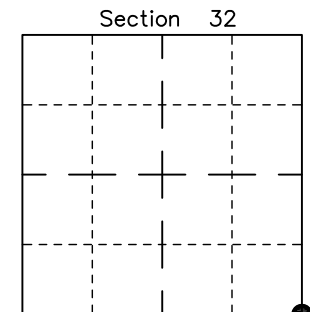
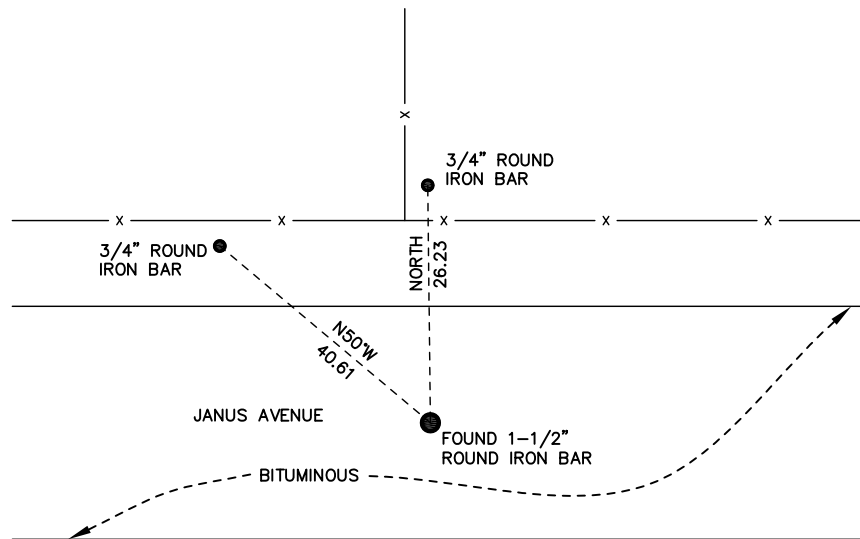
Witnesses to corner location:

Nick Hillmer  
Josh Oslund  
Dan Greenwald

MONROE COUNTY  
COORDINATE SYSTEM  
NAD 1983 (2007)

1 1/2 INCH IRON BAR  
Northing (Y) 363260.37  
Easting (X) 642441.93

Base Station - 22 182W  
Northing (Y) 408053.25  
Easting (X) 679287.00



● = LOCATION CORNER  
Corner I.D. SE 32  
T 17 N R 3 W  
Town of Angelo  
Monroe County, WI.

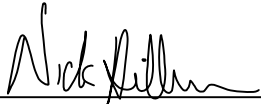
All distances are shown in U.S. Survey Feet.  
Bearings are for tie reference purposes only.  
Coordinates were derived from RTK GNSS procedures.



# CERTIFICATE

I, Nicholas M. Hillmer, do hereby certify that this document and the data contained herein was prepared by me or under my direct supervision and that I am a duly Licensed Land Surveyor under the laws of the State of Wisconsin.

Dated this 23rd day of May, 2013



Nicholas M. Hillmer, P.L.S. 2909  
Anderson Engineering of Minnesota, LLC.

# CERTIFIED LAND CORNER

## History of corner established since Original Government Survey

Fred Holden was here in 1905 and set a 1 1/2 inch angle iron.  
Harley Sime found and accepted the angle iron and replaced it with a Harrison monument in 1981.

## Description of evidence found

On January 22nd, 2013, Anderson Engineering of Minnesota located the Harrison monument just below grade in the center of an east-west bituminous road.

No. \_\_\_\_\_  
**21703320020**

Description of corner and witness monuments, references and accessories used to perpetuate the original or re-established location of this corner:

Witnesses to corner location:

Nick Hillmer  
Josh Oslund  
Dan Greenwald

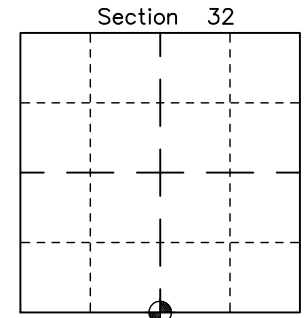
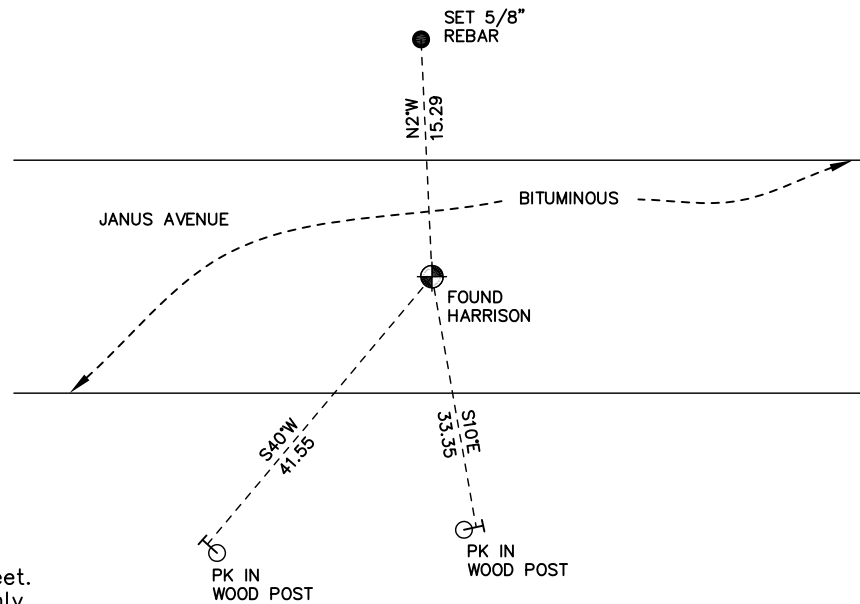
MONROE COUNTY  
COORDINATE SYSTEM  
NAD 1983 (2007)

HARRISON MONUMENT  
Northing (Y) 363253.13  
Easting (X) 639791.70

Base Station - 22 182W  
Northing (Y) 408053.25  
Easting (X) 679287.00



All distances are shown in U.S. Survey Feet.  
Bearings are for tie reference purposes only.  
Coordinates were derived from RTK GNSS procedures.

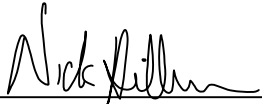


⊙ = LOCATION CORNER  
Corner I.D. S 1/4 32  
T 17 N R 3 W  
Town of Angelo  
Monroe County, WI.

# CERTIFICATE

I, Nicholas M. Hillmer, do hereby certify that this document and the data contained herein was prepared by me or under my direct supervision and that I am a duly Licensed Land Surveyor under the laws of the State of Wisconsin.

Dated this 23rd day of May, 2013



Nicholas M. Hillmer, P.L.S. 2909  
Anderson Engineering of Minnesota, LLC.

# CERTIFIED LAND CORNER

History of corner established since Original Government Survey

Harley Sime finds an old bearing tree stump and used it to set a 2 1/2 inch pipe.

Description of evidence found

On January 22nd, 2013, Anderson Engineering of Minnesota located the 2 1/2 inch pipe 4 feet above grade.

No. \_\_\_\_\_  
**21703322000**

Description of corner and witness monuments, references and accessories used to perpetuate the original or re-established location of this corner:

Witnesses to corner location:

Nick Hillmer  
Josh Oslund  
Dan Greenwald

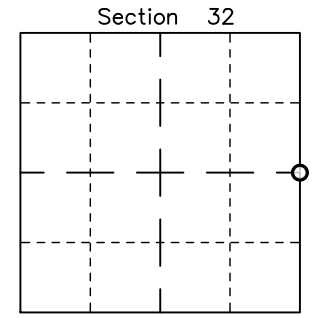
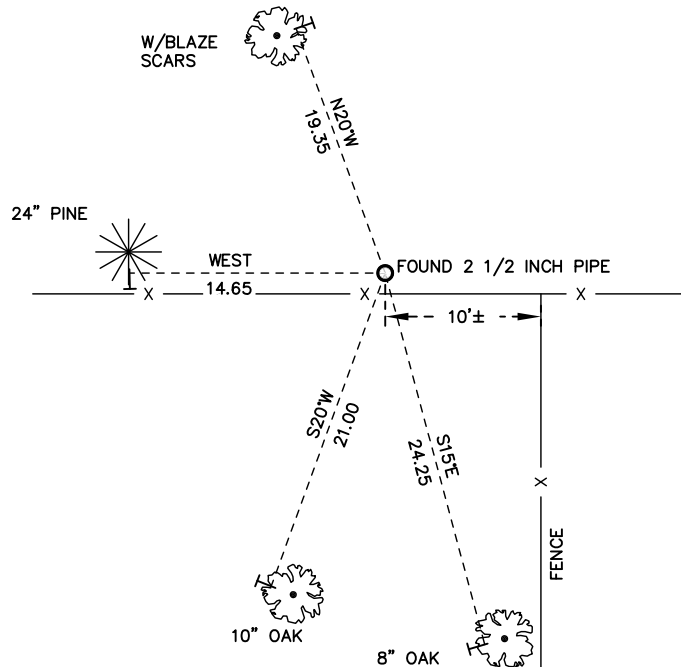
MONROE COUNTY  
COORDINATE SYSTEM  
NAD 1983 (2007)

2 1/2 INCH PIPE  
Northing (Y) 365908.64  
Easting (X) 642443.42

Base Station - 22 182W  
Northing (Y) 408053.25  
Easting (X) 679287.00



All distances are shown in U.S. Survey Feet.  
Ties are to 60D nails set in trees.  
Bearings are for tie reference purposes only.  
Coordinates were derived from RTK GNSS procedures.

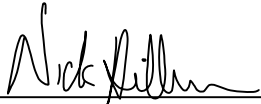


○ = LOCATION CORNER  
Corner I.D. E 1/4 32  
T 17 N R 3 W  
Town of Angelo  
Monroe County, WI.

# CERTIFICATE

I, Nicholas M. Hillmer, do hereby certify that this document and the data contained herein was prepared by me or under my direct supervision and that I am a duly Licensed Land Surveyor under the laws of the State of Wisconsin.

Dated this 23rd day of May, 2013



Nicholas M. Hillmer, P.L.S. 2909  
Anderson Engineering of Minnesota, LLC.

# CERTIFIED LAND CORNER

## History of corner established since Original Government Survey

Fred Zieltlow was here in 1971 and set a 3/4 inch iron bar in the centerline of the road. William Jung found and accepted the iron bar. Jung replaced it with a Harrison monument in 1982.

## Description of evidence found

On January 22nd, 2013, Anderson Engineering of Minnesota located the Harrison monument 0.5 feet below grade in the center of an east-west bituminous road.

No. \_\_\_\_\_  
**21703330000**

Description of corner and witness monuments, references and accessories used to perpetuate the original or re-established location of this corner:

Witnesses to corner location:

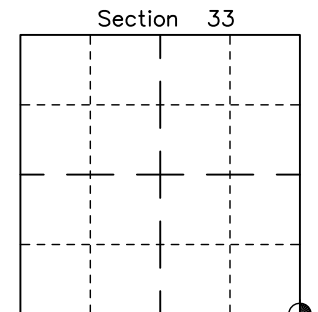
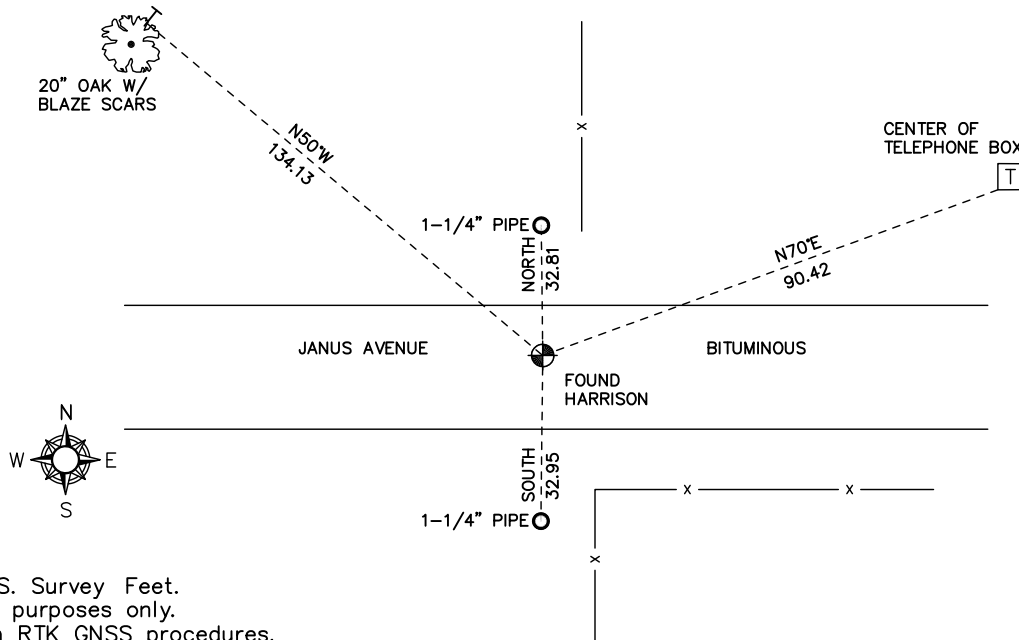
Nick Hillmer  
Josh Oslund  
Dan Greenwald

MONROE COUNTY  
COORDINATE SYSTEM  
NAD 1983 (2007)

HARRISON MONUMENT  
Northing (Y) 363272.91  
Easting (X) 647721.38

Base Station - 22 182W  
Northing (Y) 408053.25  
Easting (X) 679287.00

All distances are shown in U.S. Survey Feet.  
Bearings are for tie reference purposes only.  
Coordinates were derived from RTK GNSS procedures.



⊕ = LOCATION CORNER  
Corner I.D. SE 33  
T 17 N R 3 W  
Town of Angelo  
Monroe County, WI.