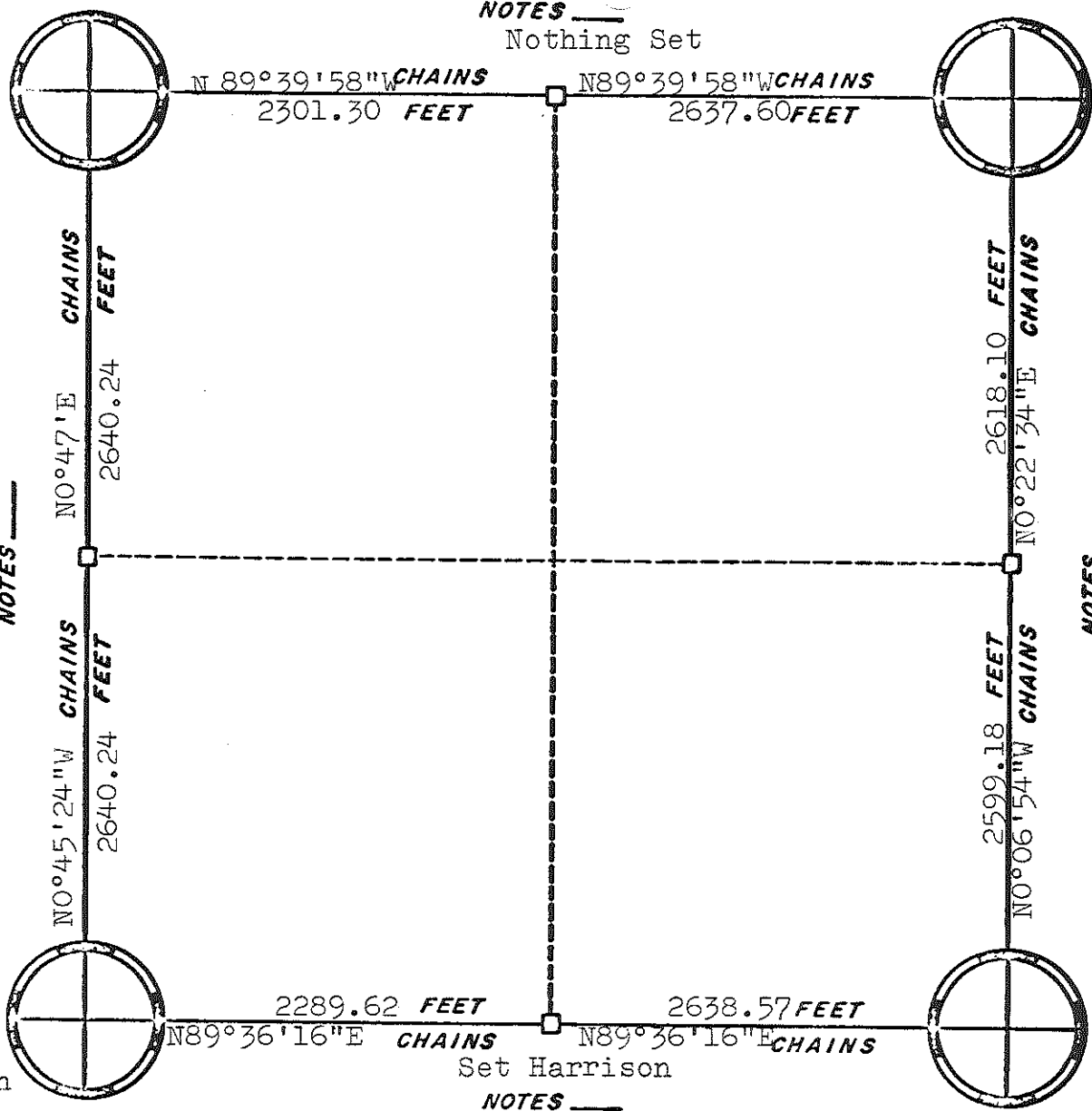




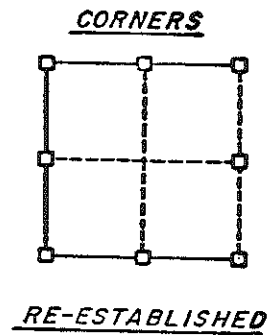
Nothing Set

NOTES \_\_\_\_\_  
Nothing Set

Fd. 1 1/4" I.B.



Set Harrison



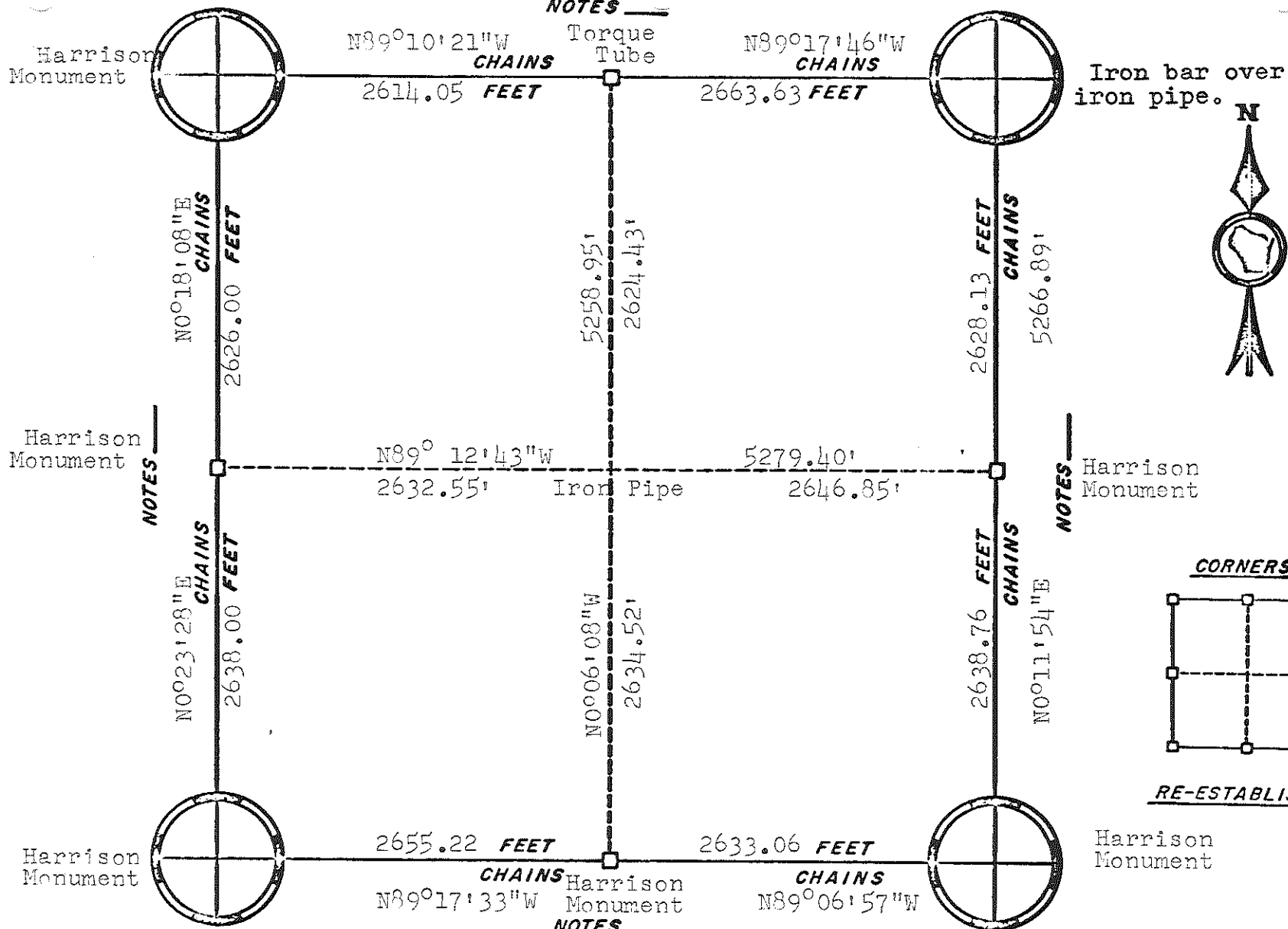
Set Harrison

ORIGINAL SURVEY DATA

BY \_\_\_\_\_  
DATE \_\_\_\_\_

SURVEYED BY	CONTRACT DATE	COUNTY MONROE	TOWN-VILLAGE-CITY	SECTION	TOWNSHIP	RANGE
	Sept. 1980	██████████	Adrian	19	17N	2W

NOTES \_\_\_\_\_



NOTES \_\_\_\_\_

NOTES \_\_\_\_\_

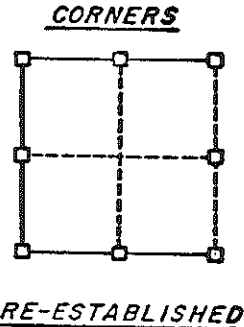
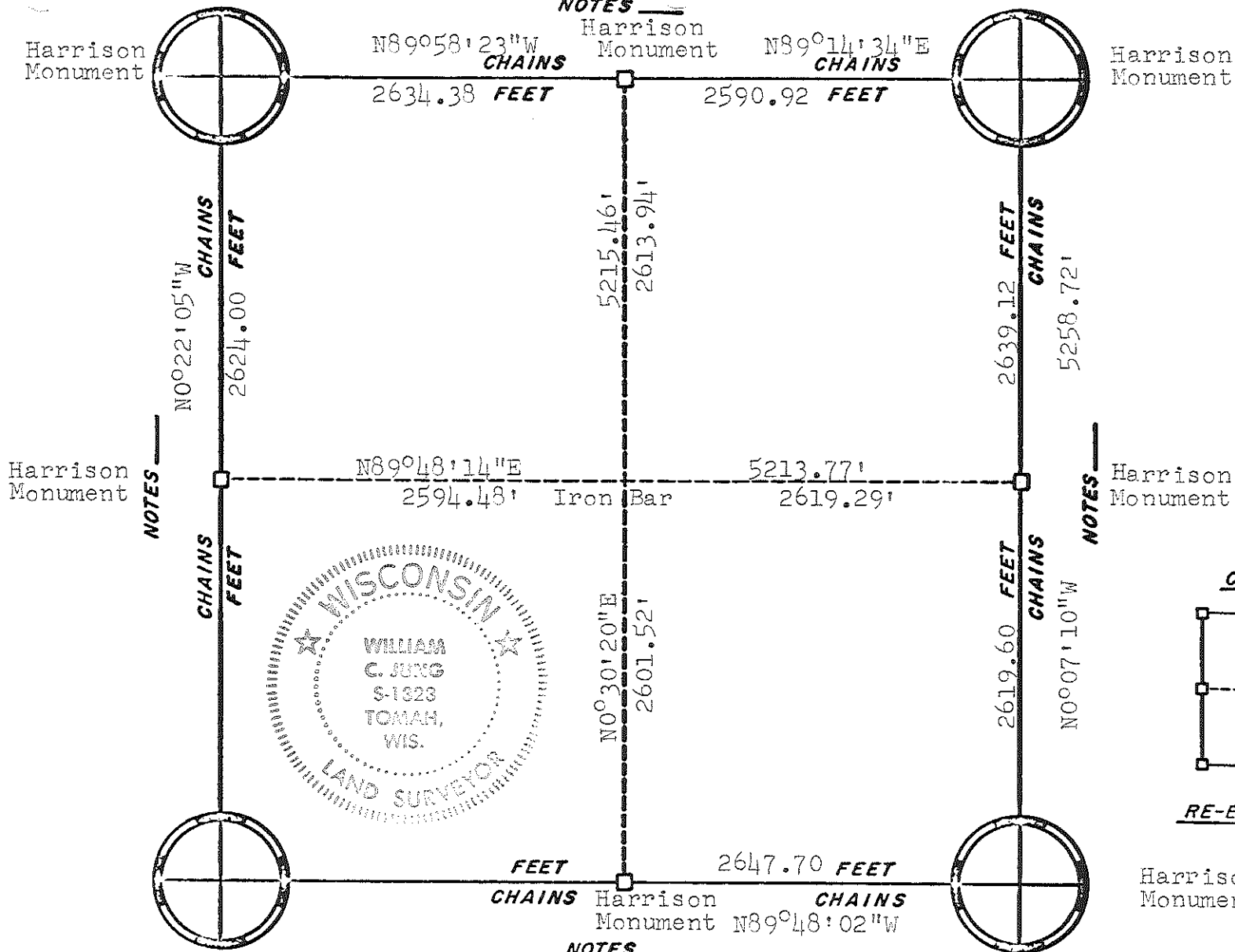
NOTES \_\_\_\_\_

ORIGINAL SURVEY DATA

BY *awg*  
DATE 3/5/79

SURVEYED BY	CONTRACT DATE	COUNTY MONROE	TOWN-VILLAGE-CITY	SECTION	TOWNSHIP	RANGE
D. J. Malliet	Nov. 1975	██████████	Adrian	24	17N	2W

**NOTES** \_\_\_\_\_

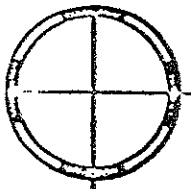


**ORIGINAL SURVEY DATA**

BY *W.C.J.*  
 DATE 3/5/79

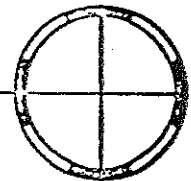
SURVEYED BY	CONTRACT DATE	COUNTY MONROE	TOWN-VILLAGE-CITY	SECTION	TOWNSHIP	RANGE
W. C. Jung	April 1976		Adrian	26	17N	2W

Existing Harrison Monument



**NOTES** 7<sup>1</sup>/<sub>2</sub> chains  
 N89°28'55"W --- 5194.24'  
 CHAINS Harrison Monument CHAINS  
 2597.12 FEET 2597.12 FEET

Harrison Monument



**NOTES** ---  
 N01°40'28"E --- 5239.60'  
 CHAINS Harrison Monument CHAINS  
 2619.80 FEET 2619.80 FEET

N89°22'39"W--2610.86'

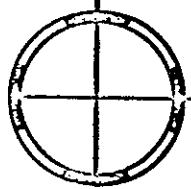
N89°22'39"W--2610.86'

N01°22'21"E--2624.32'

1 1/4" x 30" round iron bar

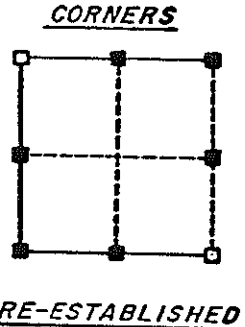
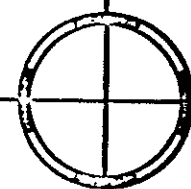
2628.91 FEET  
 CHAINS Harrison Monument CHAINS  
 2628.91 FEET  
**NOTES** ---  
 N01°04'18"E --- 5257.82'

Harrison Monument



2624.605 FEET 2624.605 FEET  
 CHAINS Harrison Monument CHAINS  
 N89°16'27"W --- 5249.21'  
**NOTES** 80.00 chains

Existing Harrison Monument

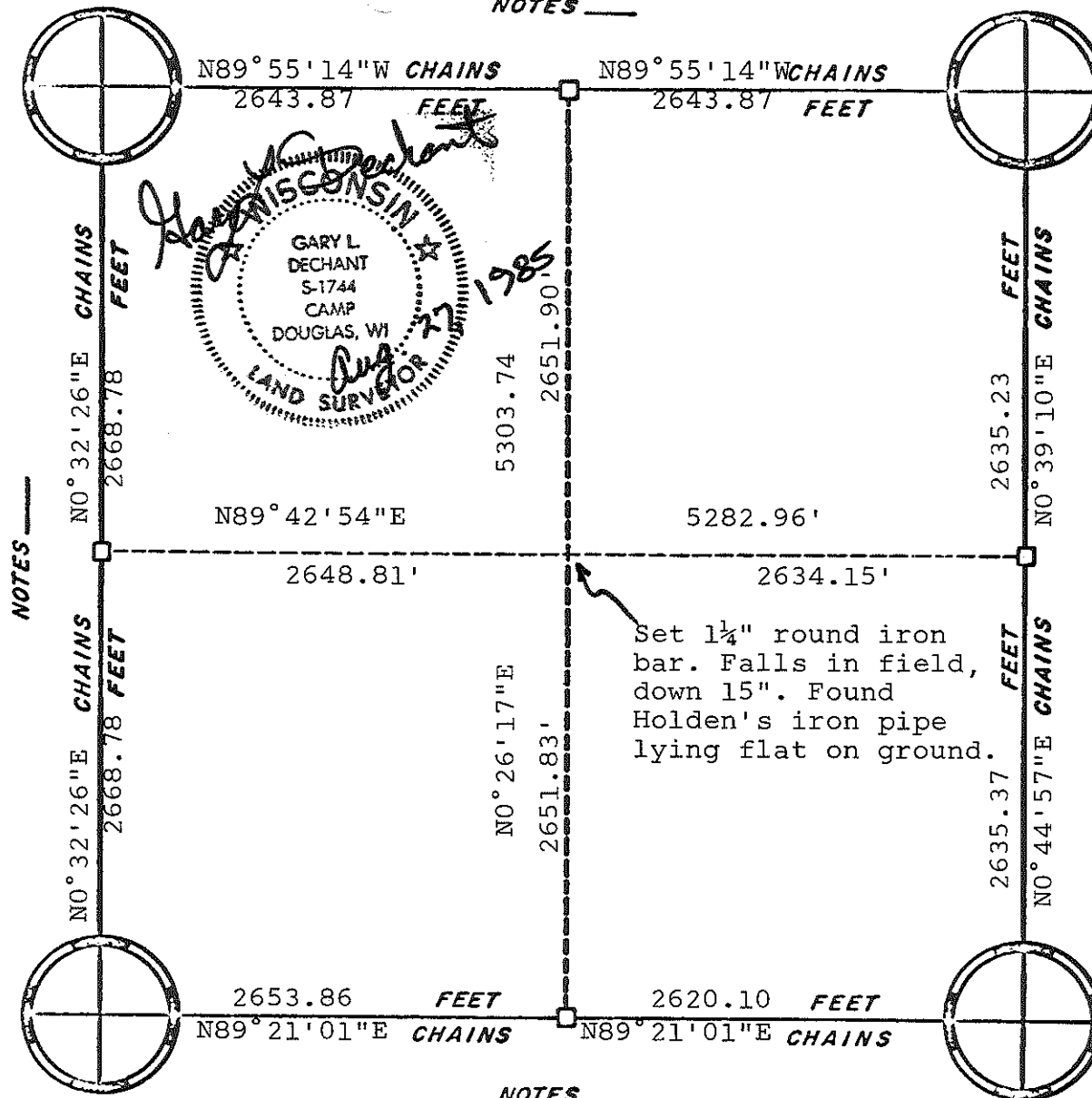


**ORIGINAL SURVEY DATA**

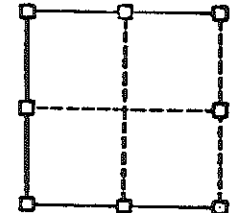
BY \_\_\_\_\_  
 DATE Dec. 1993

SURVEYED BY	CONTRACT DATE	COUNTY	MONROE	TOWN-VILLAGE-CITY	SECTION	TOWNSHIP	RANGE
L.A. Feddersen				ADRIAN	29	17 N	2 W

NOTES \_\_\_\_\_



CORNERS



RE-ESTABLISHED

All corners are Harrison Monuments.

NOTES \_\_\_\_\_

ORIGINAL SURVEY DATA

BY \_\_\_\_\_

DATE \_\_\_\_\_

SURVEYED BY	CONTRACT DATE	COUNTY MONROE	TOWN-VILLAGE-CITY	SECTION	TOWNSHIP	RANGE
G. L. Dechant	Aug. 15, 1985		Adrian	33	17N	2W