

CERTIFICATE

CERTIFIED LAND CORNER

No. 4

21702350020

I, Harley A. Sime, do hereby certify that on the 5th day of March 1981, I found ~~(no evidence)~~ (no evidence) of the N¹/₄ corner of Section 2, T 16 N, R 2 W Fourth Principal Meridian, and I re-established said corner according to the Wisconsin Statutes as shown and described hereon.

Dated this 6th day of March 1981.

Harley A. Sime, R.L.S. 355

County Surveyor
Title

History of corner establishment since Original Government Survey
Schroeder (?) was her in 1895.
Hamilton La Rue was here in Sept. of 1897.

Description of corner evidence found:

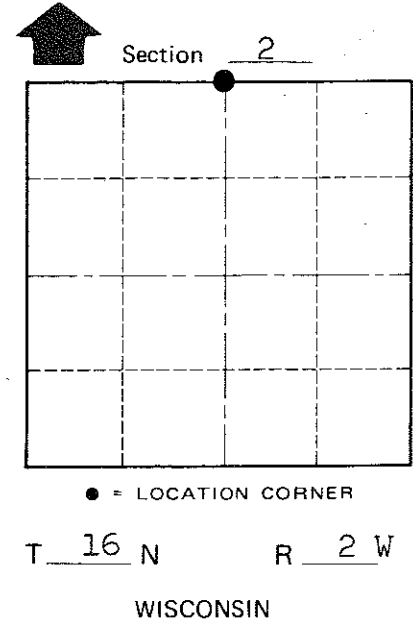
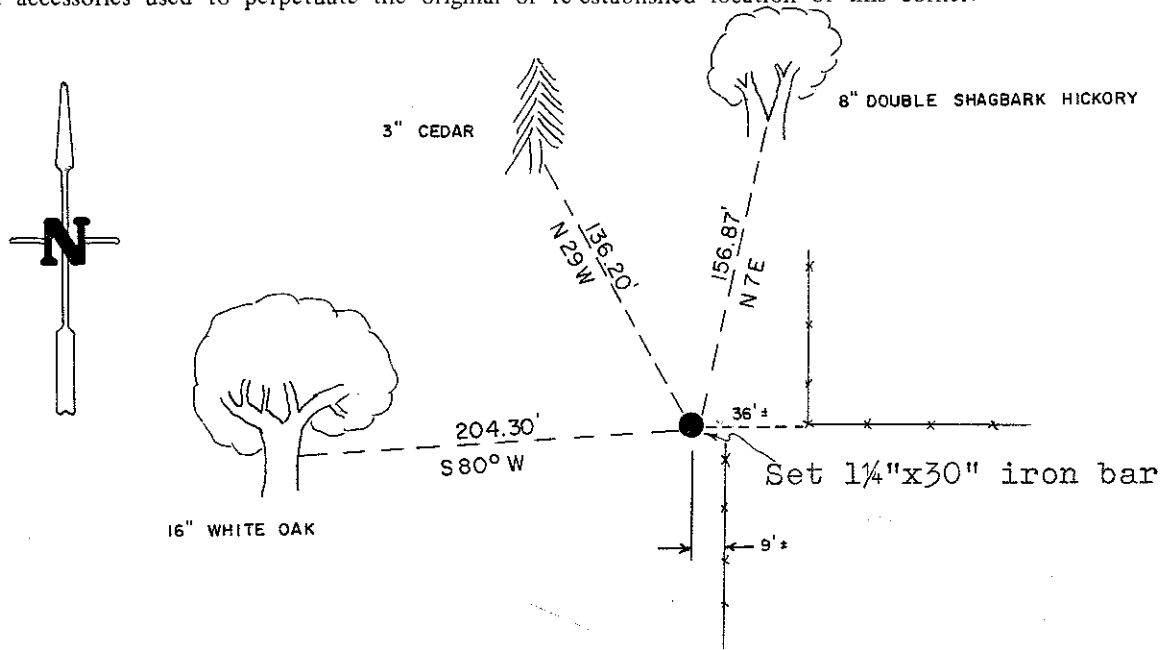
Set on line with E-W fence and at a doubled distance between the occupied NE corner of Section 2 and the NE corner-NW¹/₄-NE¹/₄ of Section 2. This corner fits reasonably well.

COUNTY SURVEYOR FORM NO. 1

Description of corner and witness monuments, references and accessories used to perpetuate the original or re-established location of this corner:

Witnesses to corner location:

- G. Dechant
- B. Meyer
- C. Pietz



Approved: HARLEY A. SIME
MONROE CO. SURVEYOR

SURVEY CONTROL ORDER

Horizontal	_____
Vertical	_____

WISCONSIN COORDINATE SYSTEM

Corner	East (X)	North (Y)	Elevation (Z)	Zone
Control Sta. Name				

(Trees, except Cedar, are double blazed with Nail set)

City, Village or Town Ridgeville

County of Monroe