

CERTIFICATE

CERTIFIED LAND CORNER

No. 118

21702342000

I, Harley A. Sime, do hereby certify that on the 5<sup>th</sup> day of October 19 77, I found (evidence) ~~(no evidence)~~ of the East 1/4 corner of Section 34, T 17 N, R 2 W, Fourth Principal Meridian, and I re-established said corner according to the Wisconsin Statutes as shown and described hereon.  
Dated this 1 day of Dec. 1977.

History of original corner establishment: None

Description of corner evidence found:

Accepted the fence corner after traversing out the whole section

Approved: **HARLEY A. SIME**

County Surveyor **MONROE CO. SURVEYOR**  
Title

COUNTY SURVEYOR FORM NO. 1

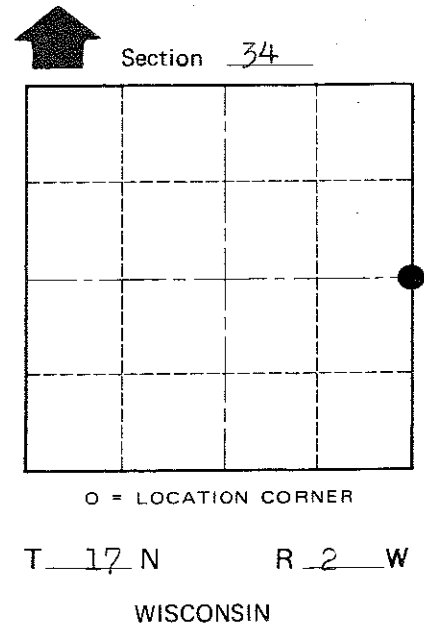
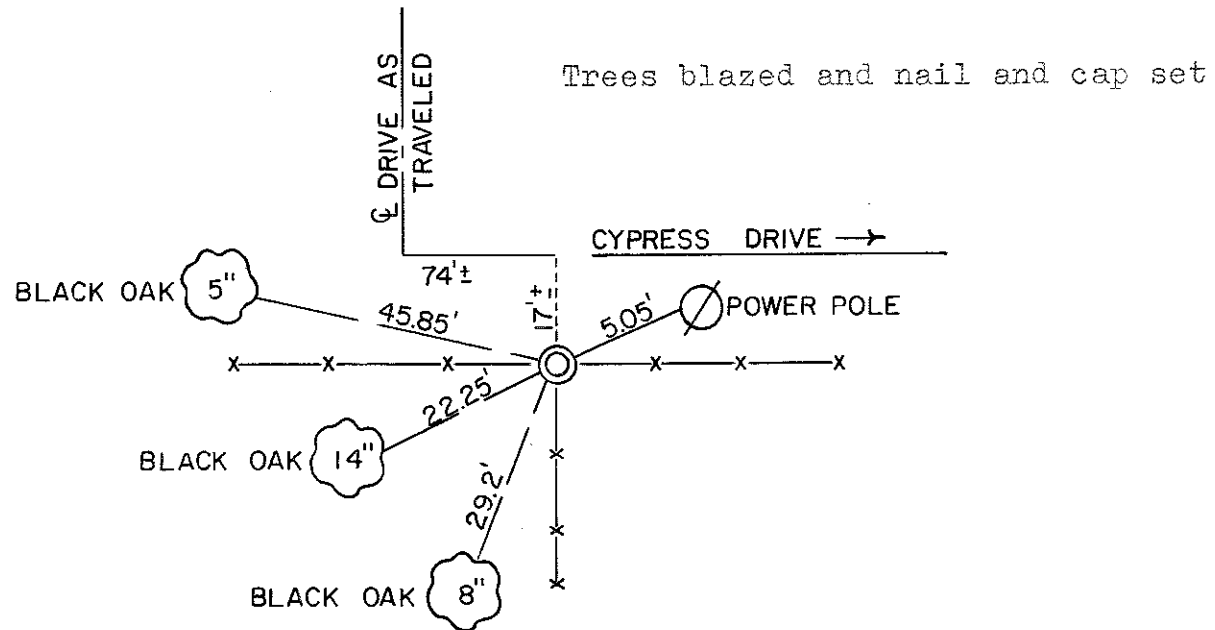
Description of corner and witness monuments, references and accessories used to perpetuate the original or re-established location of this corner:

Set Harrison Monument.

Witnesses to corner location:

Pietz

Iueck



SURVEY CONTROL ORDER

Horizontal	_____
Vertical	_____

WISCONSIN COORDINATE SYSTEM

Corner	East (X)	North (Y)	Elevation (Z)	Zone
Control Sta. Name				

City, Village or Town Adrian  
County of Monroe  
Wisconsin