

CERTIFICATE

CERTIFIED LAND CORNER

No. 126

21702340020

I, Harley A. Sime, do hereby certify that on the 21 day of October, 19 77, I found ~~(evidence)~~ (no evidence) of the South quarter corner of Section 34, T17 N, R 2 W, Fourth Principal Meridian, and I re-established said corner according to the Wisconsin Statutes as shown and described hereon.

History of original corner establishment: None

Dated this 1 day of Dec. 19 77.

Description of corner evidence found:

Set this corner on line and midway between the two Section corners.

(Computed Corner)

County Surveyor _____
Title

Approved: HARLEY A. SIME
MONROE CO. SURVEYOR

Description of corner and witness monuments, references and accessories used to perpetuate the original or re-established location of this corner:

Could not set actual corner.

Witness points set.

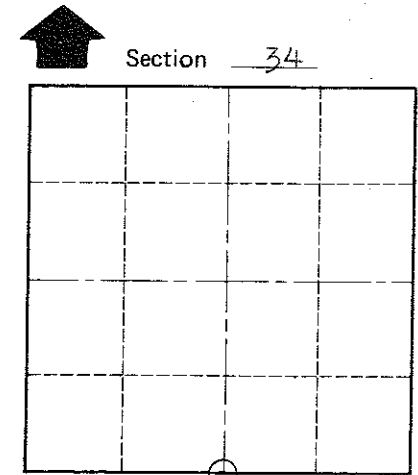
Witnesses to corner location:

Pietz

Dechant

Sime

SEE ENLARGEMENT
(See page 2 of 2)



O = LOCATION CORNER

T 17 N R 2 W

WISCONSIN

COUNTY SURVEYOR FORM NO. 1

SURVEY CONTROL ORDER

| | |
|------------|-------|
| Horizontal | _____ |
| Vertical | _____ |

WISCONSIN COORDINATE SYSTEM

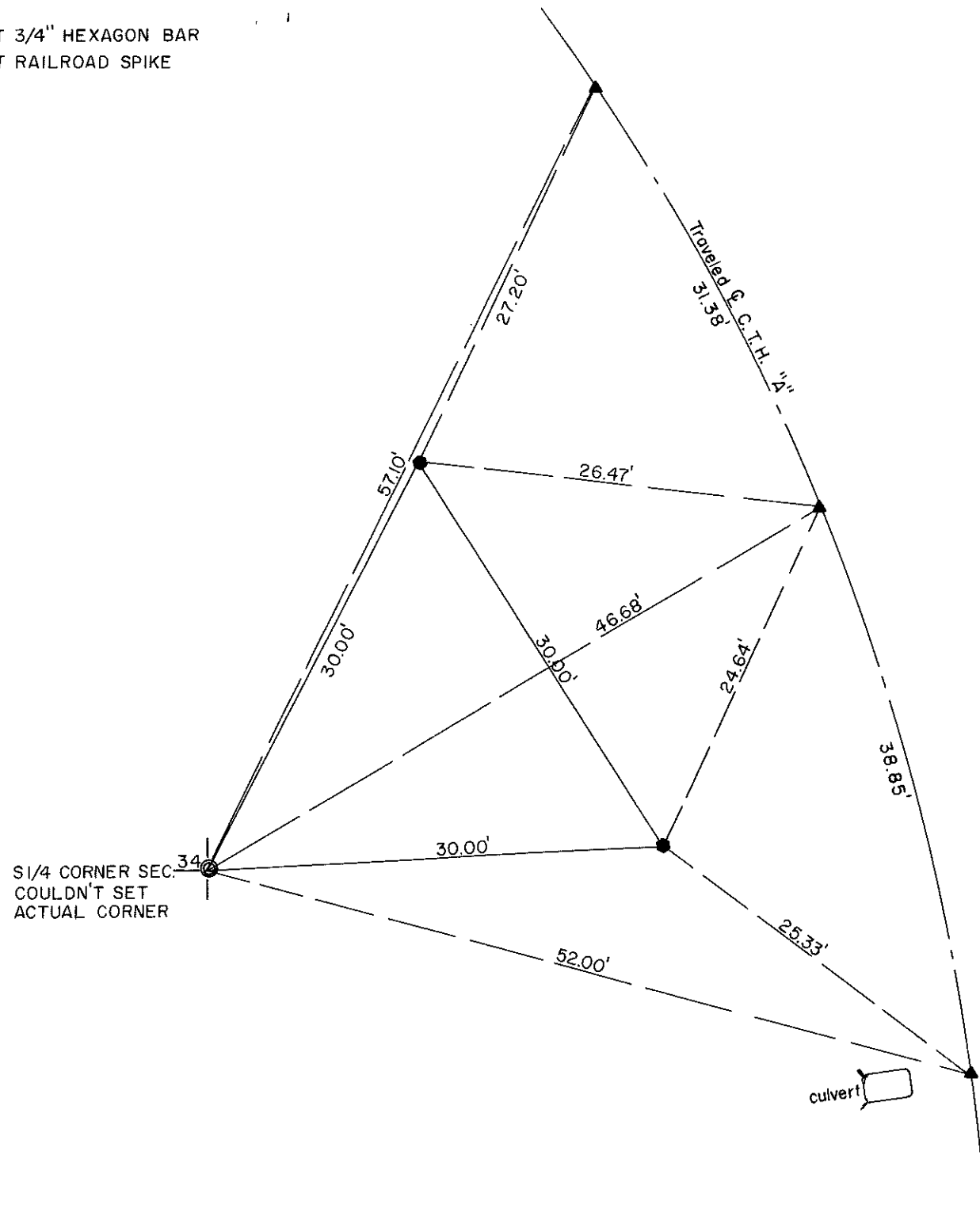
| Corner | East (X) | North (Y) | Elevation (Z) | Zone |
|-------------------|----------|-----------|---------------|------|
| Control Sta. Name | | | | |

City, Village or Town Adrian

County of Monroe

Wisconsin

- = SET 3/4" HEXAGON BAR
- ▲ = SET RAILROAD SPIKE



culvert
This Spike in E Pavement And Over Old Concrete Culvert