

CERTIFICATE

CERTIFIED LAND CORNER

No. 117

21702332000

I, Harley A. Sime, do hereby certify that on the 21 day of October 1977, I found (evidence) (~~no evidence~~) of the West quarter corner of Section 34, T 17 N, R 2 W, Fourth Principal Meridian, and I re-established said corner according to the Wisconsin Statutes as shown and described hereon.

History of original corner establishment:
Fred A. Holden was here in April 1907.

Dated this 1 day of Dec. 1977.

Description of corner evidence found:
Replaced a 1 1/2" iron pipe with a Harrison Monument. Set the same pipe along side Harrison and left the pipe up about 2'. Accepted this corner after traversing out the section

County Surveyor
Title

Approved: **HARLEY A. SIME**
MONROE CO. SURVEYOR

COUNTY SURVEYOR FORM NO. 1

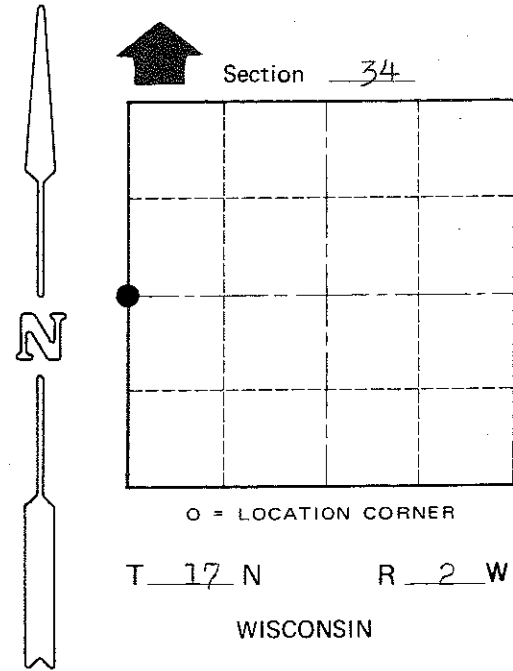
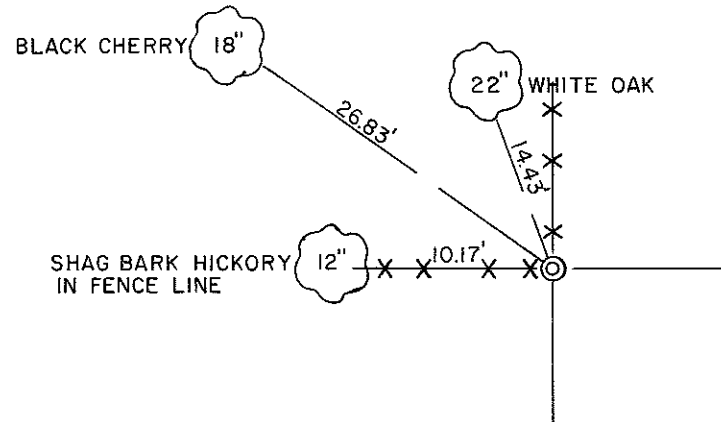
Description of corner and witness monuments, references and accessories used to perpetuate the original or re-established location of this corner:

Set a Harrison Monument.

Witnesses to corner location:

Pietz
Sime
Dechant

All trees blazed and nail and cap set



SURVEY CONTROL ORDER

Table with 2 rows: Horizontal, Vertical

WISCONSIN COORDINATE SYSTEM

Table with 5 columns: Corner, East (X), North (Y), Elevation (Z), Zone

City, Village or Town Adrian
County of Monroe
Wisconsin