

CERTIFICATE

CERTIFIED LAND CORNER

No. 128

21702330020

I, Gary L. Dechant, do hereby certify that on the 24th day of July 1985, I found (evidence) ~~(no evidence)~~ of the S¹/₄ corner of Section 33, T 17 N, R 2W Fourth Principal Meridian, and I re-established said corner according to the Wisconsin Statutes as shown and described hereon.

History of corner establishment since Original Government Survey

Fred Holden was here in April of 1907.

Description of corner evidence found:

Set corner in existing north-south fence and in a straight line between section corners.

Dated this 5th day of August 1985.

Gary L. Dechant

Registered Land Surveyor-1744
Title

COUNTY SURVEYOR FORM NO. 1

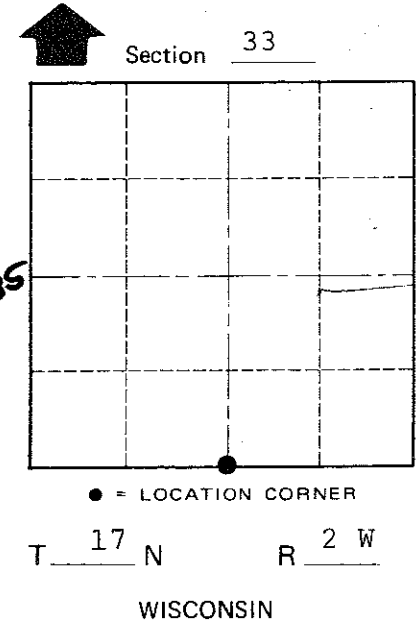
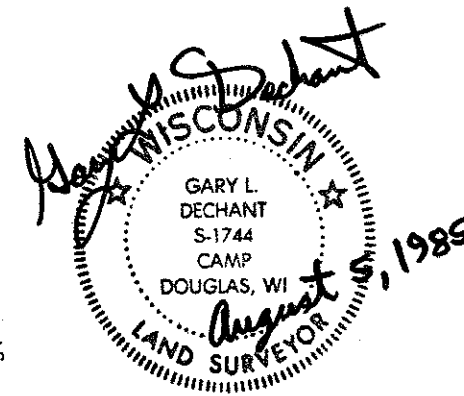
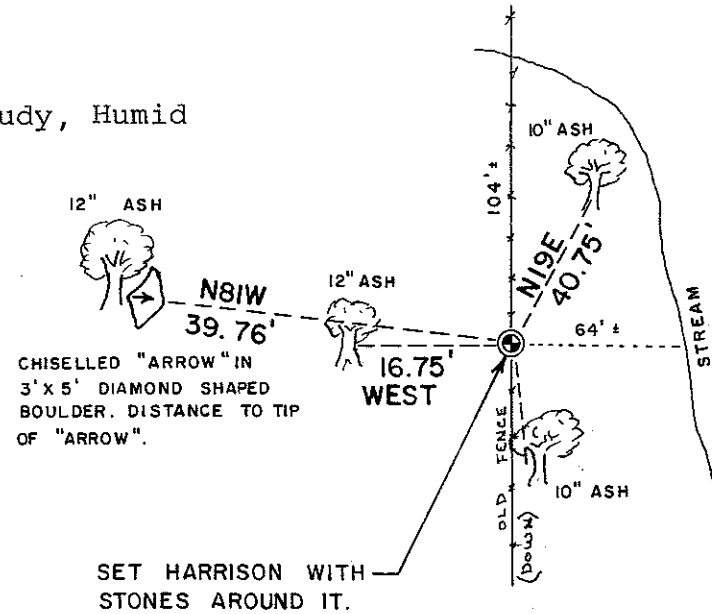
Description of corner and witness monuments, references and accessories used to perpetuate the original or re-established location of this corner:

Witnesses to corner location:

D. Rattle

G. Dechant

Weather:
75°± Cloudy, Humid



SURVEY CONTROL ORDER

Horizontal	_____
Vertical	_____

WISCONSIN COORDINATE SYSTEM

Corner	East (X)	North (Y)	Elevation (Z)	Zone
Control Sta. Name				

(Trees double blazed with N&C's set)

~~City, Village or~~ Town Adrian
County of Monroe