

CERTIFICATE

CERTIFIED LAND CORNER

No. 127

21702330000

I, Harley A. Sime, do hereby certify that on the 21 day of October 1977, I found ~~(evidence)~~ (no evidence) of the SW corner of Section 34, T 17 N, R 2 W Fourth Principal Meridian, and I re-established said corner according to the Wisconsin Statutes as shown and described hereon.

Dated this 6<sup>th</sup> day of Feb. 1978.

History of original corner establishment:

No history of corner since the Original Government Survey

Description of corner evidence found:

Set the corner in the centerline of an old North-South town road and at a distance from the W<sup>1</sup>/<sub>4</sub> corner of Section 34 equivalent to the distance along the west line of the NW<sup>1</sup>/<sub>4</sub> of Section 34.

Approved: **HARLEY A. SIME**  
**MONROE CO, SURVEYOR**

County Surveyor  
Title

COUNTY SURVEYOR FORM NO. 1.

Description of corner and witness monuments, references and accessories used to perpetuate the original or re-established location of this corner:

Set Harrison Monument

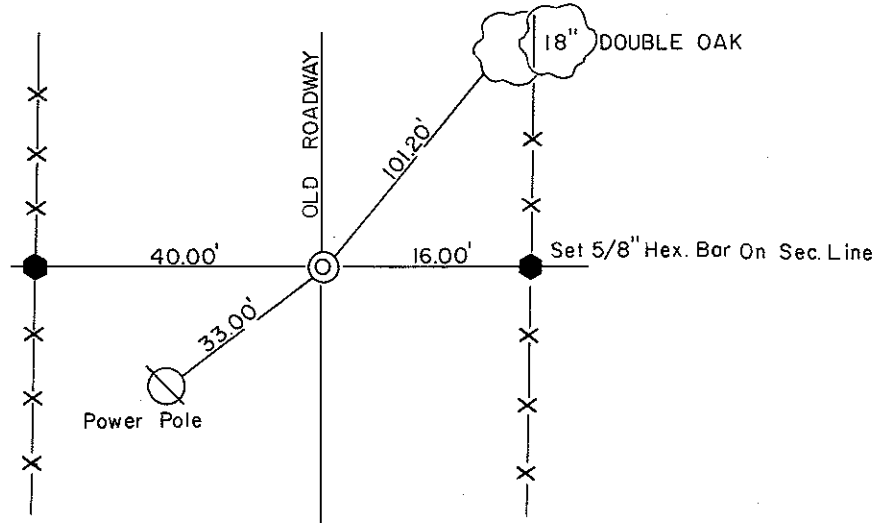
Witnesses to corner location:

C. Pietz, Crew Chief

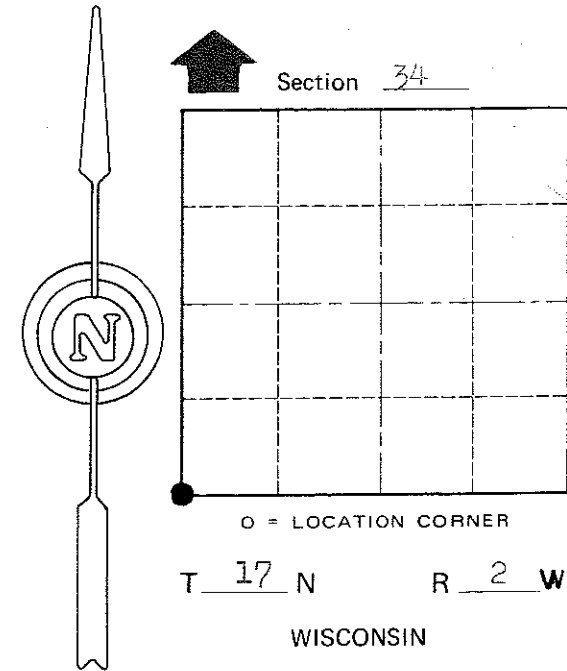
G. Sime

G. Dechant

Set 5/8" Hex. Bar On Projection Of Section Line West



Trees blazed and nail and cap set.



SURVEY CONTROL ORDER

Horizontal	_____
Vertical	_____

WISCONSIN COORDINATE SYSTEM

Corner	East (X)	North (Y)	Elevation (Z)	Zone
Control Sta. Name				

City, Village or Town Adrian

County of Monroe