

CERTIFICATE

CERTIFIED LAND CORNER

No. 116

21702322000

I, Gary L. Dechant, do hereby certify that on the 24th day of July 1985, I found (evidence) ~~(no evidence)~~ of the W¹/₄ corner of Section 33, T17 N, R 2 W Fourth Principal Meridian, and I re-established said corner according to the Wisconsin Statutes as shown and described hereon.

Dated this 5th day of August 1985.

Gary L. Dechant

Registered Land Surveyor-1744
Title

History of corner establishment since Original Government Survey

Fred Holden was here in April of 1907.

Description of corner evidence found:

Accepted fence corner as best available evidence. This occupied corner fits a straight line with the occupied forty corner to the north and with the found unrecorded 1 1/4" iron bar at the NW corner, extremely well. The distance from the W 1/4 corner to the NW corner is somewhat long, but is within reason.

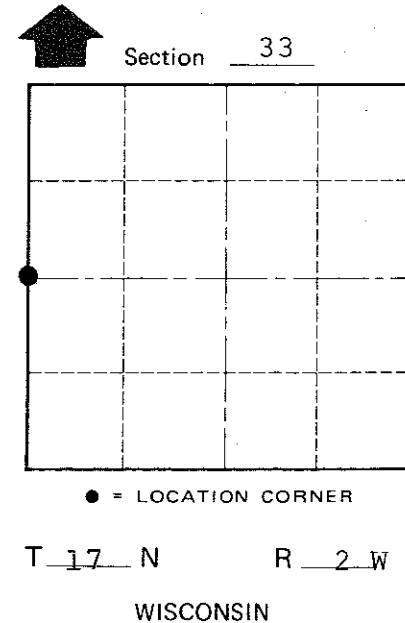
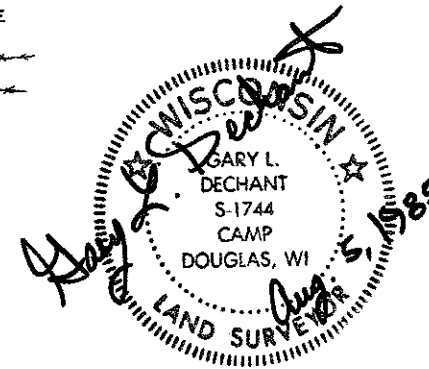
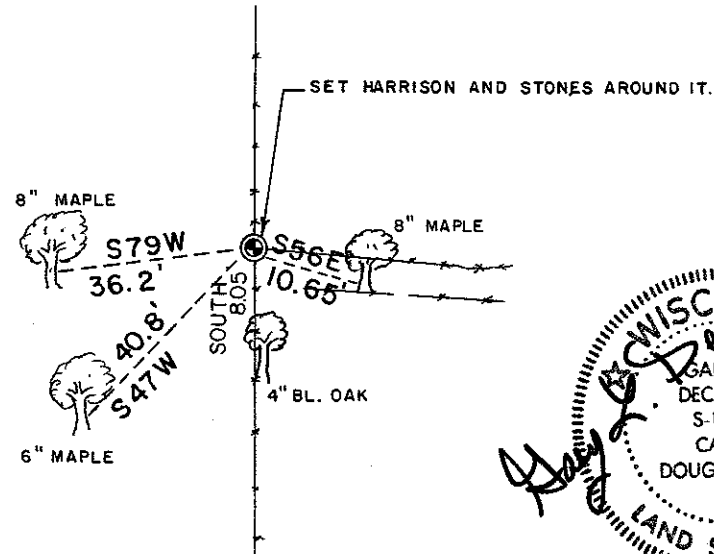
Description of corner and witness monuments, references and accessories used to perpetuate the original or re-established location of this corner:

Witnesses to corner location:

Dan Rattle

Gary Dechant

Weather:
75°± Cloudy, Humid



(Trees double blazed with N&C's set)

SURVEY CONTROL ORDER

Horizontal	_____
Vertical	_____

WISCONSIN COORDINATE SYSTEM

Corner	East (X)	North (Y)	Elevation (Z)	Zone
Control Sta. Name				

~~City/Village~~ Town Adrian
County of Monroe

COUNTY SURVEYOR FORM NO. 1