

130

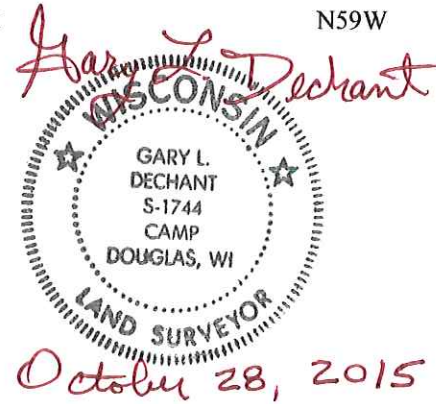
**U.S. PUBLIC LAND CORNER
MAINTENANCE**

**Corner ID : S1/4 Sec.32, T17N-R2W
21702320020**

<u>DATE</u>	<u>CREW</u>	<u>MONUMENT TYPE -----</u>
May 18, 2015	Zachariah P.Dechant Gary L. Dechant	Existing TCP intact, 44' south of fence corner Set new sign 2' west. On north side of shallow ravine

References:

	<u>Bearing</u>	<u>Distance</u>
1) Set 3/4"x24" round iron bar, down 6", NE of 10" Hickory (BT)	N20E	22.78'
2) Set 3/4"x24" round iron bar, down 6", south side of rock, 3' west of 18" Black Cherry. South of ravine	S18E	40.66'
3) Set 3/4"x24" round iron bar, down 6", 5' NE of 18" White Oak (BT) south of ravine	S54W	52.34'
4) Set 3/4"x24" round iron bar, down 6", SE of rock	N59W	35.92'



I, Gary L. Dechant, do hereby certify that on the 22nd day of May 19 96, I found (evidence) (no evidence) of the S 1/4 corner of Section 32, T 17 N, R 2 W Fourth Principal Meridian, and I re-established said corner according to the Wisconsin Statutes as shown and described hereon.

History of corner establishment since Original Government Survey

Fred Holden was here in 1910.

See Reverse Side For Maintenance

Description of corner evidence found:

Set corner on line with fence to the North and on line with section corners.

Dated this 23rd day of May 19 96.

Gary L. Dechant

R.L.S. 1744 Title

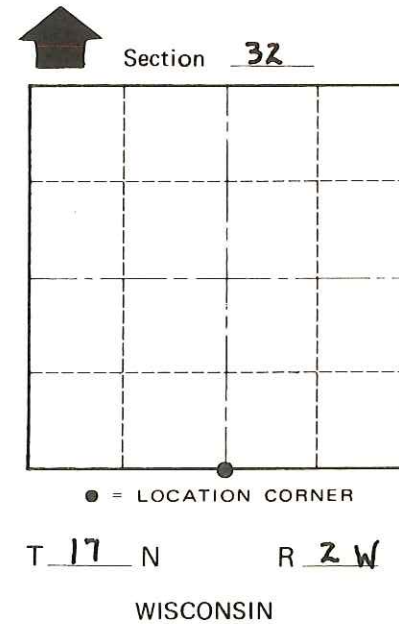
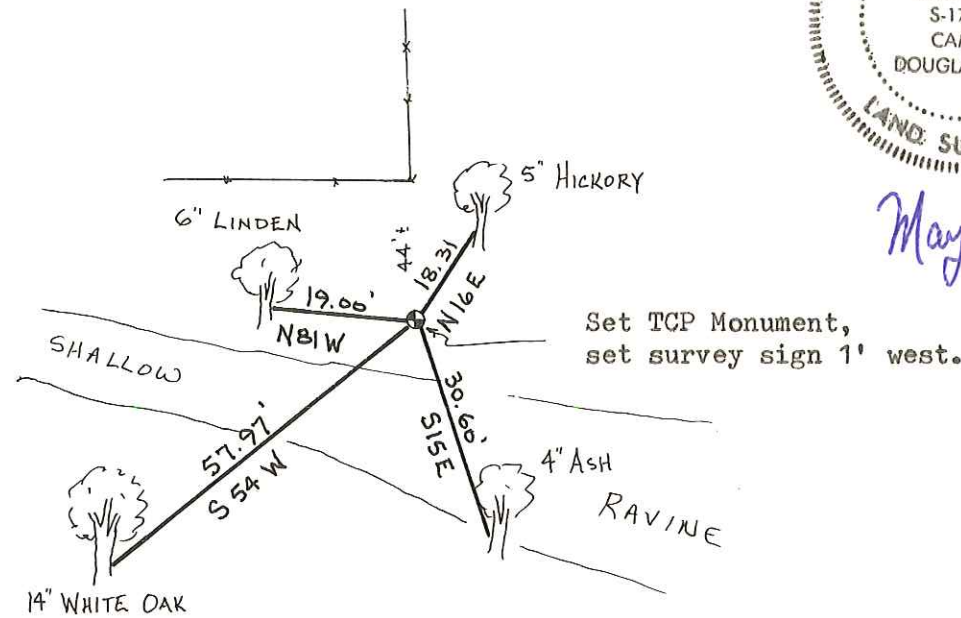
COUNTY SURVEYOR FORM NO. 1

Description of corner and witness monuments, references and accessories used to perpetuate the original or re-established location of this corner

Witnesses to corner location:

David E. Madison

Gary L. Dechant



SURVEY CONTROL ORDER

Table with 2 rows: Horizontal, Vertical.

WISCONSIN COORDINATE SYSTEM

Table with 5 columns: Corner, East (X), North (Y), Elevation (Z), Zone. Row 1: Control Sta. Name.

City, Village or Town ADRIAN County of MONROE