

129

**U.S. PUBLIC LAND CORNER
MAINTENANCE**

**Corner ID : SE Sec.32, T17N-R2W
21702320000**

<u>DATE</u>	<u>CREW</u>	<u>MONUMENT TYPE -----</u>
April 13, 2017	Zachariah P.Dechant Gary L. Dechant	Existing Harrison, top 12" broke off Set new sign 1' North. Falls in pine plantation north slope

<u>References:</u>	<u>Bearing</u>	<u>Distance</u>
1) Set 3/4"x24" round iron bar, down 6", 4' south 10" Red Pine	S84E	19.89'
2) Set 3/4"x24" round iron bar, down 6", 4' north 10" White Pine	S4E	23.00'
3) Set 3/4"x24" round iron bar, down 6", 4' NW of 18" White Pine	S60W	9.65'
4) Set 3/4"x24" round iron bar, down 6", 4' SE of 10" White Pine	N36W	23.12'

Gary L. Dechant

April 20, 2017

I, Gary L. Dechant, do hereby certify that on the 24th day of July 19 85, I found ~~(evidence)~~ (no evidence) of the SW corner of Section 33, T 17 N, R 2W Fourth Principal Meridian, and I re-established said corner according to the Wisconsin Statutes as shown and described hereon.

Dated this 5th day of August 19 85.

Gary L. Dechant
 Registered Land Surveyor-1744
Title

History of corner establishment since Original Government Survey

Fred Holden set a stone(+) at this corner in May of 1910.

See Reverse Side For Maintenance

Description of corner evidence found:

We could not find Holden's stone. The corner falls in what is now a young pine plantation and was probably a tilled field before the pine plantation. It may have been plowed out. We spent several hours digging and probing. If it is there, it did a splendid job of eluding us. Set corner on line and at a doubled distance from the NW and W $\frac{1}{4}$ corners of Section 33. This corner location fits Holden's distance very well to the W $\frac{1}{4}$ corner of Section 4, T16N-R2W. Holden shows a distance of 2453' \pm and we measure 2455' \pm .

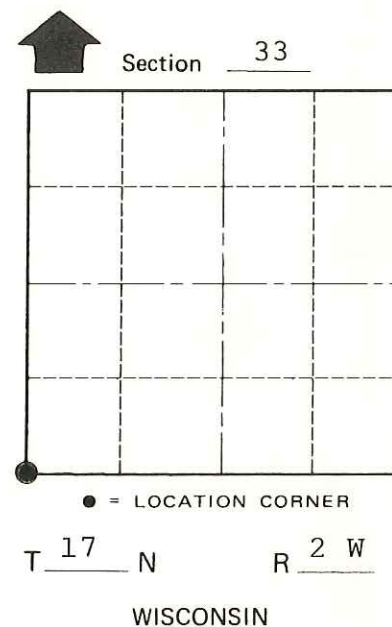
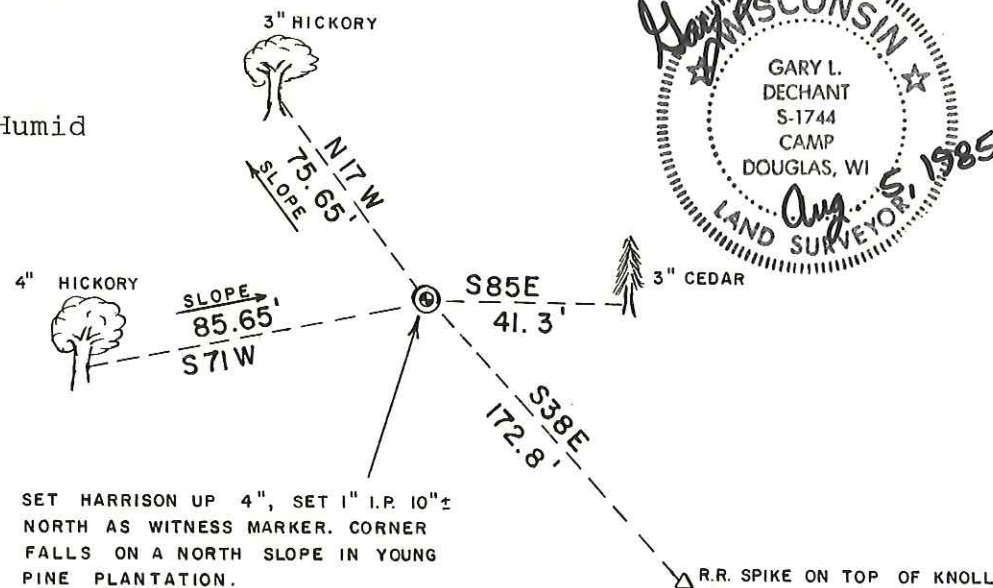
Description of corner and witness monuments, references and accessories used to perpetuate the original or re-established location of this corner:

Witnesses to corner location:

Dan Rattle

Gary Dechant

Weather:
 75 $^{\circ}$ \pm Cloudy, Humid



SET HARRISON UP 4", SET 1" I.P. 10" \pm NORTH AS WITNESS MARKER. CORNER FALLS ON A NORTH SLOPE IN YOUNG PINE PLANTATION. FOUND SCATTERED PIECES OF E-W WIRE FROM 10'-20' SOUTH OF CORNER.

(Trees double blazed with N&C's set)

SURVEY CONTROL ORDER

Horizontal	_____
Vertical	_____

WISCONSIN COORDINATE SYSTEM

Corner	East (X)	North (Y)	Elevation (Z)	Zone
Control Sta. Name				

~~City, Village~~ Town Adrian
 County of Monroe

COUNTY SURVEYOR FORM NO. 1