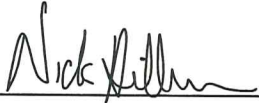


CERTIFICATE

I, Nicholas M. Hillmer, do hereby certify that this document and the data contained herein was prepared by me or under my direct supervision and that I am a duly Licensed Land Surveyor under the laws of the State of Wisconsin.

Dated this 23rd day of May, 2013



Nicholas M. Hillmer, P.L.S. 2909
Anderson Engineering of Minnesota, LLC.

CERTIFIED LAND CORNER

History of corner established since Original Government Survey

IN 1993 Lawrence Fedderson established this corner on line and equal distance from the section corners.

Description of evidence found

On May 20, 2012, Anderson Engineering of Minnesota located the Harrison monument down 1.5 feet below grade.

No. 21702302000



Description of corner and witness monuments, references and accessories used to perpetuate the original or re-established location of this corner:

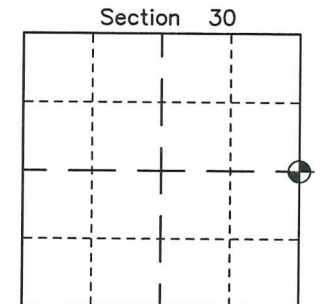
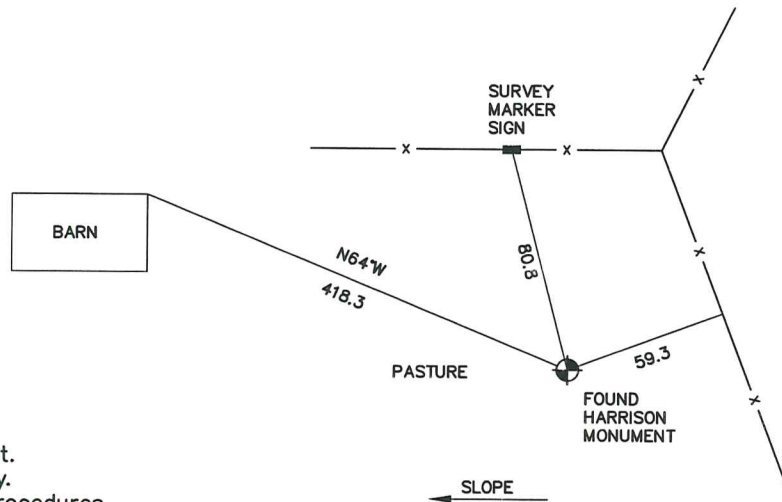
Witnesses to corner location:

Nick Hillmer
Josh Oslund
Dan Greenwald

MONROE COUNTY
COORDINATE SYSTEM
NAD 1983 (2007)

HARRISON MONUMENT
Northing (Y) 371055.61
Easting (X) 668459.63

Base Station - 22 182W
Northing (Y) 408053.25
Easting (X) 679287.00



⊕ = LOCATION CORNER
Corner I.D. E 1/4 30
T 17 N R 2 W
Town of Adrian
Monroe County, WI.

All distances are shown in U.S. Survey Feet.
Bearings are for tie reference purposes only.
Coordinates were derived from RTK GNSS procedures.

21702302000

I, Lawrence A. Feddersen, do hereby certify that on the eighteenth day of November 1993, I found (evidence) (no evidence) of the W 1/4 corner of Section 29, T 17 N, R 2 W Fourth Principal Meridian, and I re-established said corner according to the Wisconsin Statutes as shown and described hereon.

Dated this 15th day of Dec. 1993.

Lawrence A. Feddersen

Registered Land Surveyor

History of corner establishment since Original Government Survey

No record of re-established corner.

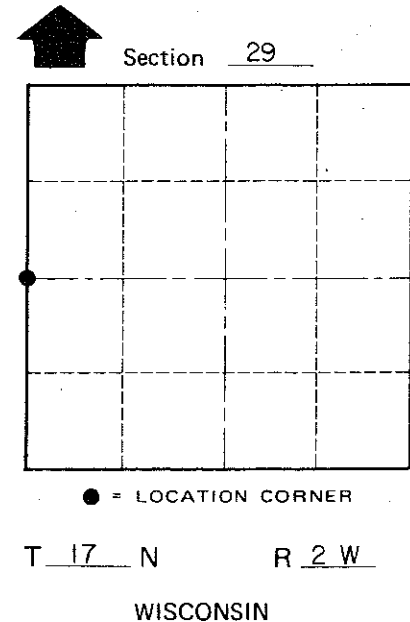
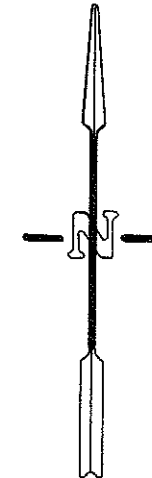
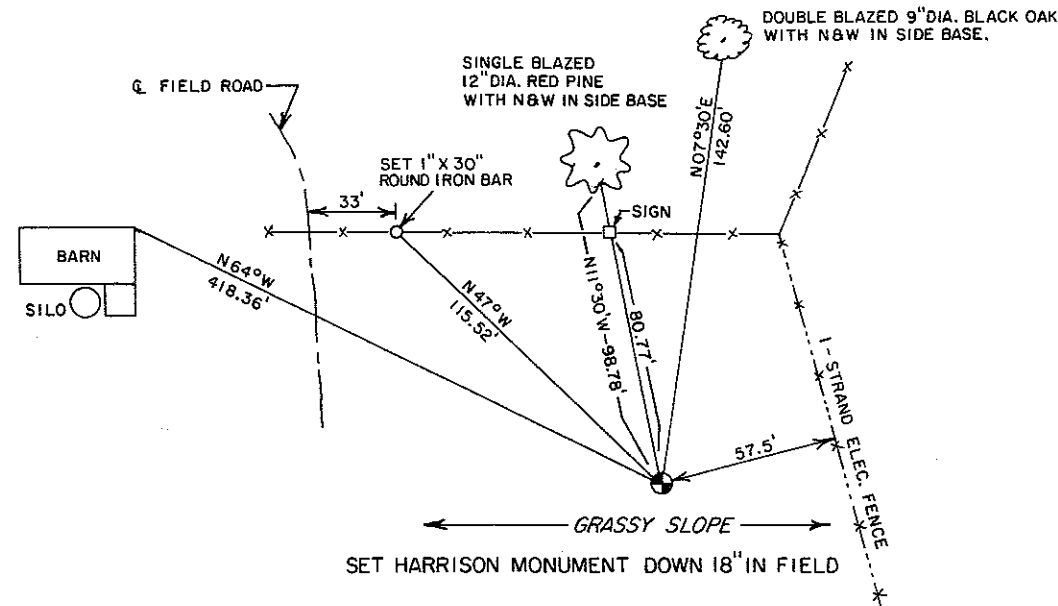
Description of corner evidence found:

This West Quarter corner was established on line, equal distant from each Section corner. All lands surrounding this corner are owned by Kurt Witt, Jr.

Description of corner and witness monuments, references and accessories used to perpetuate the original or re-established location of this corner:

Witnesses to corner location:

Lawrence A. Feddersen
Timothy J. Jeatran
John Rulseh



Note: Measurements to trees are to nail in center of washer.

SURVEY CONTROL ORDER

Horizontal
Vertical

WISCONSIN COORDINATE SYSTEM

Table with columns: Corner, Control Sta. Name, East (X), North (Y), Elevation (Z), Zone

City, Village or Town of Adrian

County of Monroe

COUNTY SURVEYOR FORM NO. 1