

CERTIFICATE

I, Nicholas M. Hillmer, do hereby certify that this document and the data contained herein was prepared by me or under my direct supervision and that I am a duly Licensed Land Surveyor under the laws of the State of Wisconsin.

Dated this 23rd day of May, 2013

Nicholas M. Hillmer, P.L.S. 2909
Anderson Engineering of Minnesota, LLC.

CERTIFIED LAND CORNER

History of corner established since Original Government Survey

In 1993 Lawrence A. Feddersen set a Harrison monument at the corner online and equal distance from each section corner.

Description of evidence found

On February 7th, 2013, Anderson Engineering of Minnesota located a 2 inch round bar with "X" 0.4 feet below grade in a mowed grass area.

No. 21702292000



Description of corner and witness monuments, references and accessories used to perpetuate the original or re-established location of this corner:

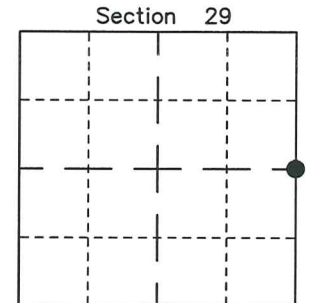
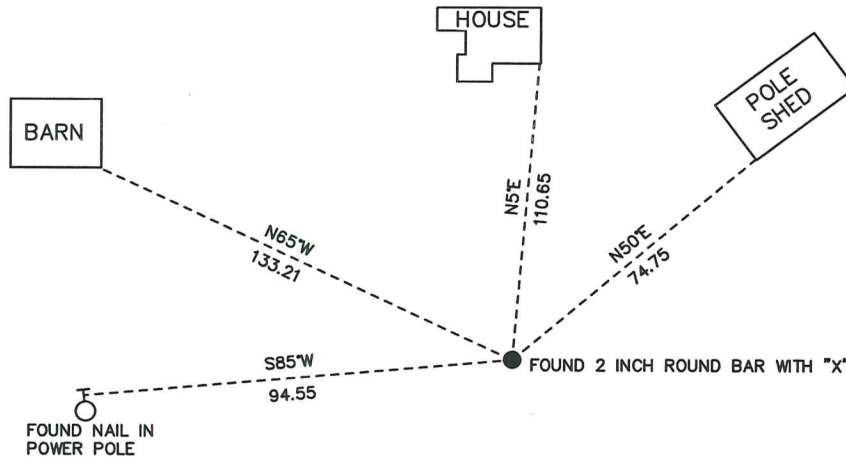
Witnesses to corner location:

Nick Hillmer
Josh Oslund
Dan Greenwald

MONROE COUNTY
COORDINATE SYSTEM
NAD 1983 (2007)

2 INCH ROUND BAR
Northing (Y) 371078.48
Easting (X) 673681.39

Base Station - 22 182W
Northing (Y) 408053.25
Easting (X) 679287.00



● = LOCATION CORNER
Corner I.D. E 1/4 29
T 17 N R 2 W
Town of Adrian
Monroe County, WI.

All distances are shown in U.S. Survey Feet.
Bearings are for tie reference purposes only.
Coordinates were derived from RTK GNSS procedures.

21702292000

I, Lawrence A. Feddersen, do hereby certify that on the eighteenth day of November 1993, I found (evidence) (no evidence) of the E 1/4 corner of Section 29, T 17 N, R 2 W Fourth Principal Meridian, and I re-established said corner according to the Wisconsin Statutes as shown and described hereon.

Dated this 15th day of Dec. 1993.

Lawrence A. Feddersen

Registered Land Surveyor Title

History of corner establishment since Original Government Survey

No record of re-established corner.

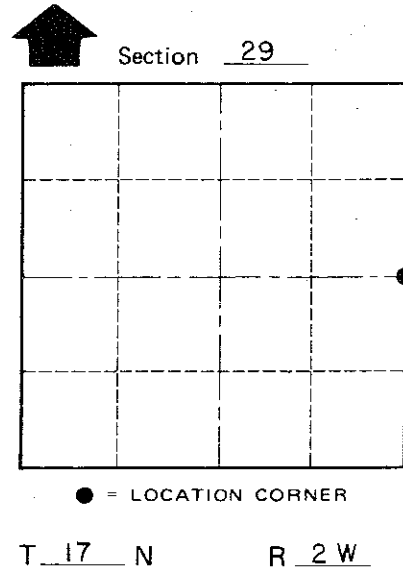
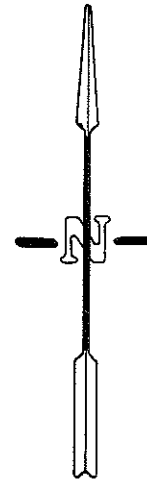
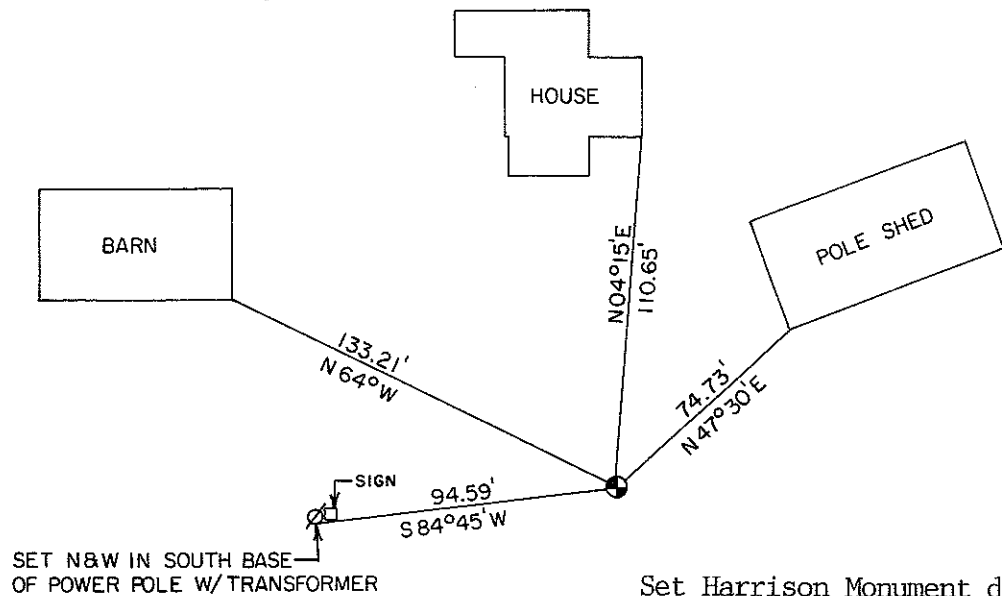
Description of corner evidence found:

This East Quarter corner was established on line, equal distant from each Section corner. All lands surrounding this corner are owned by Wayne E. Jones.

Description of corner and witness monuments, references and accessories used to perpetuate the original or re-established location of this corner:

Witnesses to corner location:

Lawrence A. Feddersen
Timothy J. Jeatran
John Rulseh



T 17 N R 2 W

WISCONSIN

Set Harrison Monument down 4" in mowed grass waterway.

COUNTY SURVEYOR FORM NO. 1

SURVEY CONTROL ORDER

Table with 2 rows: Horizontal, Vertical

WISCONSIN COORDINATE SYSTEM

Table with 5 columns: Corner, East (X), North (Y), Elevation (Z), Zone

City, Village or Town of Adrian

County of Monroe