

110

**U.S. PUBLIC LAND CORNER
MAINTENANCE**

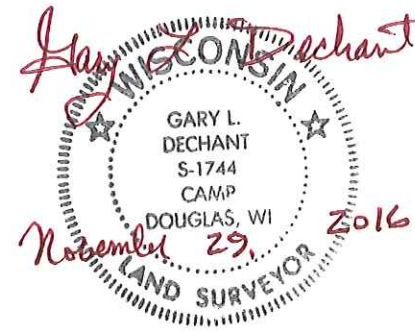
**Corner ID : S1/4 Sec. 29 T17N-R2W
21702290020**

<u>DATE</u>	<u>CREW</u>	<u>MONUMENT TYPE -----</u>
August 5, 2016	Zachariah P.Dechant Gary L. Dechant	Existing Cast Iron County Monument not a 2" iron bar as per Hillmer tie sheet. Falls on east edge of pavement, 18' north of driveway 18003 Innsbrook

References:

	<u>Bearing</u>	<u>Distance</u>
1) Set 3/4"x24" round iron bar, down 12" in field	N47E	42.60'
2) Set 3/4"x24 round iron bar, down 12" in field	S80E	36.97'
3)Existing cross in NW corner of stone wall	S15W	82.64'
4) Existing 1" round iron bar leaning. Straightened and lowered 8"	N80W	34.50'
5) Set 3/4"x24" round iron bar, down 12" in field	N80W	75.90'

Harrison and reference markers 2,4, & 5 set on straight line.



**See Reverse Side
For Maintenance**

CERTIFICATE

I, Nicholas M. Hillmer, do hereby certify that this document and the data contained herein was prepared by me or under my direct supervision and that I am a duly Licensed Land Surveyor under the laws of the State of Wisconsin.

Dated this 23rd day of May, 2013

Nicholas M. Hillmer, P.L.S. 2909
Anderson Engineering of Minnesota, LLC.

CERTIFIED LAND CORNER

History of corner established since Original Government Survey

In 1993 Lawrence Feddersen set a 2 inch round bar on line and equal distance from the section corners.

Description of evidence found

On February 7th, 2013, Anderson Engineering of Minnesota located the 2 inch round iron bar with a chiseled "X". The mark was 0.2 feet below grade on the east side of the bituminous road.

No. 110
21702290020



Description of corner and witness monuments, references and accessories used to perpetuate the original or re-established location of this corner:

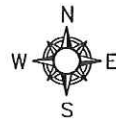
Witnesses to corner location:

Nick Hillmer
Josh Oslund
Dan Greenwald

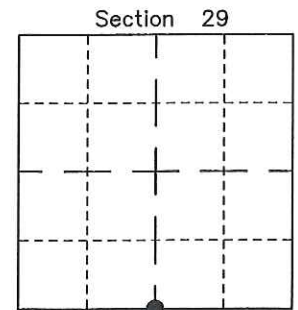
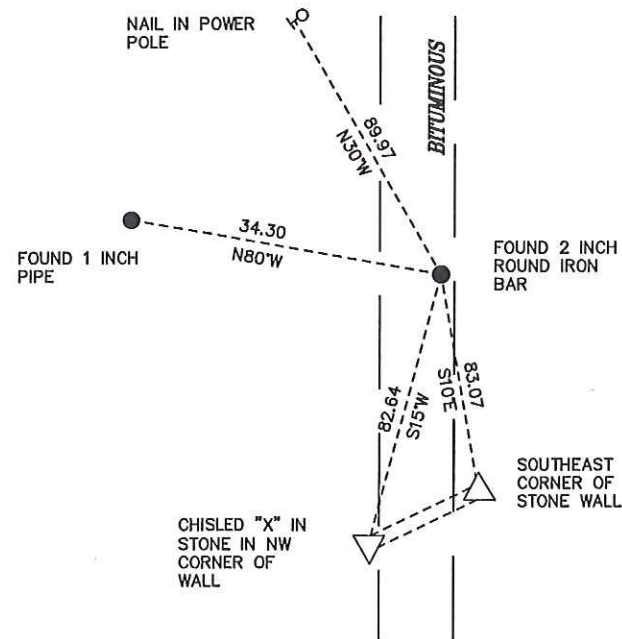
MONROE COUNTY
COORDINATE SYSTEM
NAD 1983 (2007)

2 INCH ROUND IRON BAR
Northing (Y) 368442.85
Easting (X) 671047.83

Base Station - 22 182W
Northing (Y) 408053.25
Easting (X) 679287.00



All distances are shown in U.S. Survey Feet.
Bearings are for tie reference purposes only.
Coordinates were derived from RTK GNSS procedures.



● = LOCATION CORNER
Corner I.D. S 1/4 29
T 17 N R 2 W
Town of Adrian
Monroe County, WI.

I, Lawrence A. Feddersen, do hereby certify that on the nineteenth day of November 1993, I found (evidence) (no evidence) of the S¹/₄ corner of Section 29, T 17 N, R 2 W Fourth Principal Meridian, and I re-established said corner according to the Wisconsin Statutes as shown and described hereon.

Dated this 15th day of Dec. 1993.

Lawrence A. Feddersen

Registered Land Surveyor
Title

History of corner establishment since Original Government Survey

No record of re-established corner.

**See Reverse Side
For Maintenance**

Description of corner evidence found:

This South Quarter corner was established on line, equal distant from each Section corner. All lands surrounding this corner are owned by Darwin A. & Ruth Zahrte.

COUNTY SURVEYOR FORM NO. 1

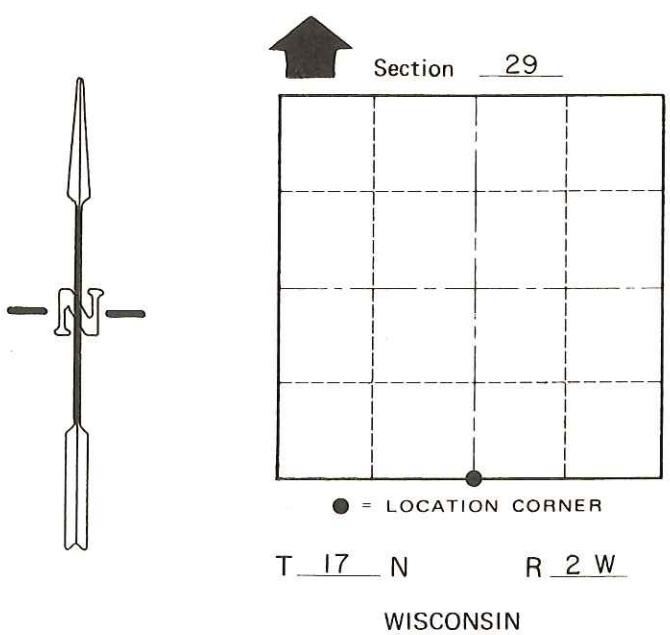
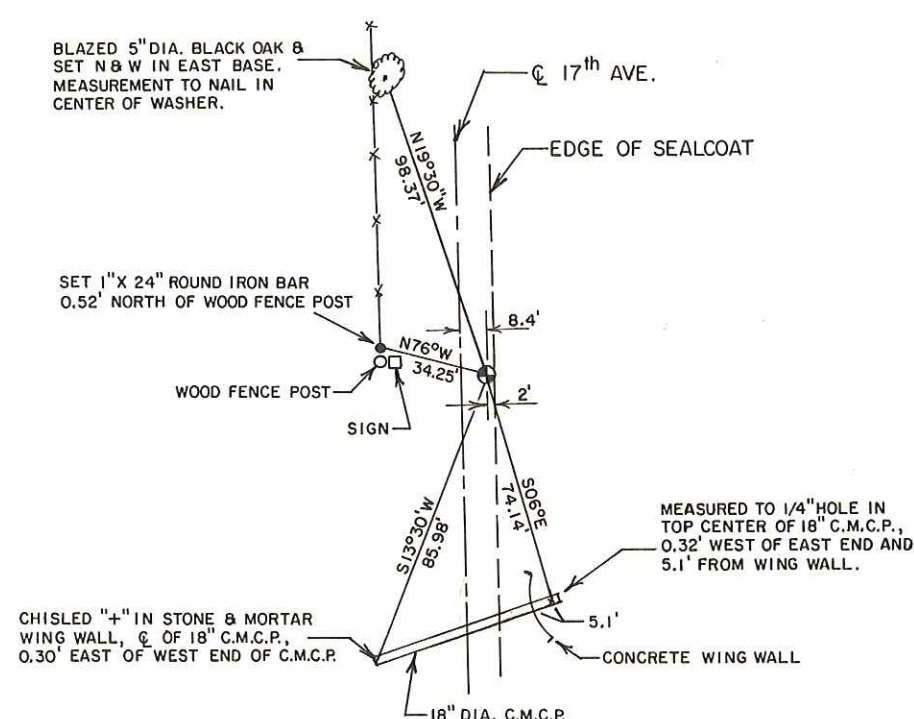
Description of corner and witness monuments, references and accessories used to perpetuate the original or re-established location of this corner:

Witnesses to corner location:

Lawrence A. Feddersen

Douglas J. Malliet

John Rulseh



SURVEY CONTROL ORDER

Horizontal	_____
Vertical	_____

WISCONSIN COORDINATE SYSTEM				
Corner	East (X)	North (Y)	Elevation (Z)	Zone
Control Sta. Name				

~~City of Village of~~ Town of Adrian
County of Monroe