

**21702290000**

I, Gary L. Dechant, do hereby certify that on the 7th day of August 1985, I found (evidence) (~~no evidence~~) of the NW corner of Section 33, T 17 N, R 2 W Fourth Principal Meridian, and I re-established said corner according to the Wisconsin Statutes as shown and described hereon.

Dated this 15th day of August 1985.

Gary L. Dechant  
Registered Land Surveyor-1744  
Title

History of corner establishment since Original Government Survey

Fred Holden in his notes of mid April 1907 shows he set a 1 1/4" iron pipe at this corner. Holden was also at this corner later in April of 1907.

Description of corner evidence found:

We could not find Holden's iron pipe of record but did find a 1"x18" round iron bar. We also found what we believe to be the remains of Holden's bearing tree mentioned in his notes of 1907. The found 1" iron bar fits Holden's bearing to the rotted remains of his tree, but is about 4' short of his distance. However, the stump is broken off and lying on its side which would account for the difference in distance. The existing 1" iron bar fit other corners within the section very well thus accepted it to be the corner.

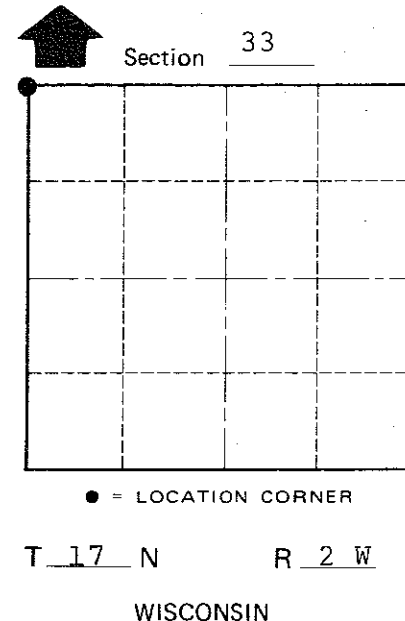
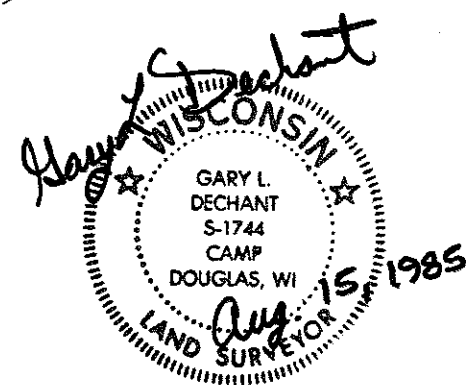
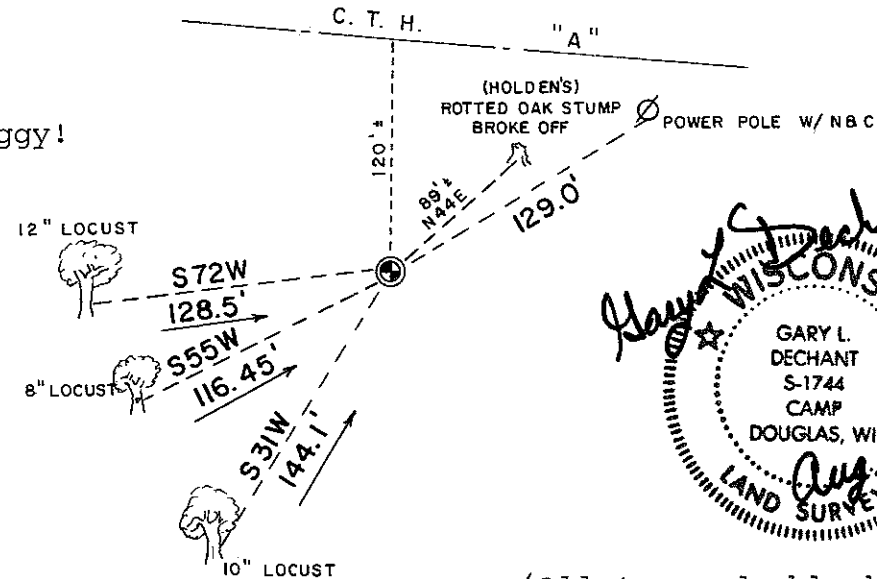
Description of corner and witness monuments, references and accessories used to perpetuate the original or re-established location of this corner:

Set Harrison in place of existing unrecorded 1" iron bar. Falls in pasture, down 15".

Witnesses to corner location:

D. Rattle  
G. Dechant

Weather:  
Hot & Muggy!



COUNTY SURVEYOR FORM NO. 1

SURVEY CONTROL ORDER

Horizontal \_\_\_\_\_  
Vertical \_\_\_\_\_

WISCONSIN COORDINATE SYSTEM

| Corner            | East (X) | North (Y) | Elevation (Z) | Zone |
|-------------------|----------|-----------|---------------|------|
| Control Sta. Name |          |           |               |      |

(All trees double blazed with N&C's set)

~~City, Village or~~ Town Adrian  
County of Monroe