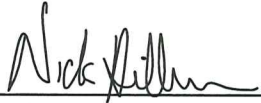


CERTIFICATE

I, Nicholas M. Hillmer, do hereby certify that this document and the data contained herein was prepared by me or under my direct supervision and that I am a duly Licensed Land Surveyor under the laws of the State of Wisconsin.

Dated this 23rd day of May, 2013



Nicholas M. Hillmer, P.L.S. 2909
Anderson Engineering of Minnesota, LLC.

CERTIFIED LAND CORNER

History of corner established since Original Government Survey

Kim Pritzlaff set an iron bar at the occupied corner in April of 1975. William Jung found the iron bar and accepted it as the corner. In 1980 Jung removed the bar and replaced it with a Harrison monument.

Description of evidence found

On February 26th, 2013, Anderson Engineering of Minnesota located the Harrison monument 0.4 foot above grade at the intersection of fences running north, south, and east.

No. **21702282000**



Description of corner and witness monuments, references and accessories used to perpetuate the original or re-established location of this corner:

Witnesses to corner location:

Nick Hillmer
Josh Oslund
Dan Greenwald

MONROE COUNTY
COORDINATE SYSTEM
NAD 1983 (2007)

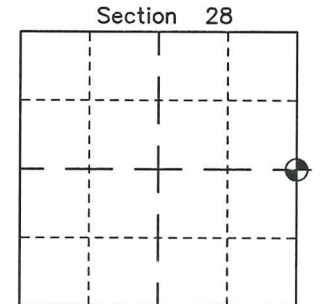
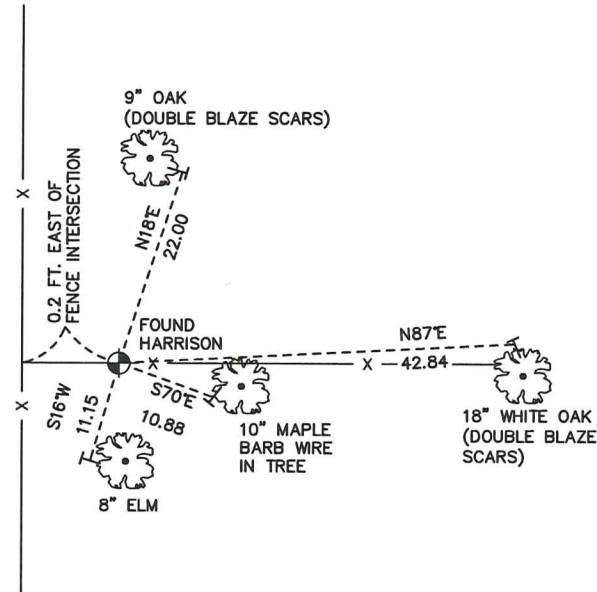
HARRISON MONUMENT
Northing (Y) 371141.75
Easting (X) 678917.36

Base Station - 22 182W
Northing (Y) 408053.25
Easting (X) 679287.00



All distances are shown in U.S. Survey Feet.
Ties are to 60D nails set in trees.
Bearings are for tie reference purposes only.
Coordinates were derived from RTK GNSS procedures.

CULTIVATED FIELD



● = LOCATION CORNER
Corner I.D. E 1/4 28
T 17 N R 2 W
Town of Adrian
Monroe County, WI.

21702282000

I, William C. Jung, do hereby certify that on the thirteenth day of August 1980, I found (evidence) ~~XXXXXXXXXX~~ of the West 1/4 corner of Section 27, T 17 N, R 2 W Fourth Principal Meridian, and I re-established said corner according to the Wisconsin Statutes as shown and described hereon.

History of corner establishment since Original Government Survey
Kim Pritzlaff set an iron bar at the occupied corner in April of 1975.

Description of corner evidence found:

Found Pritzlaff's survey point which had been used in the the 1975 survey. Accepted this location and replaced the iron bar with a Harrison marker. The old rotted stump to the Northeast is probably an old bearing tree stump. It fits the old occupied corner very well for course and distance.

Dated this 23rd day of Feb. 1981.

William C. Jung

William C. Jung - R.L.S. 1323

Approved: HARLEY A. SIME

MONROE CO. SURVEYOR

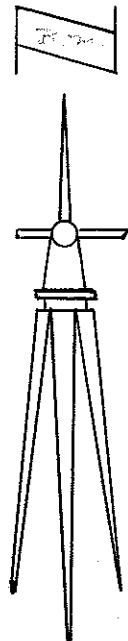
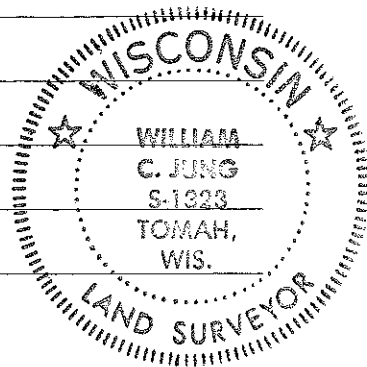
Description of corner and witness monuments, references and accessories used to perpetuate the original or re-established location of this corner:

COUNTY SURVEYOR FORM NO. 1

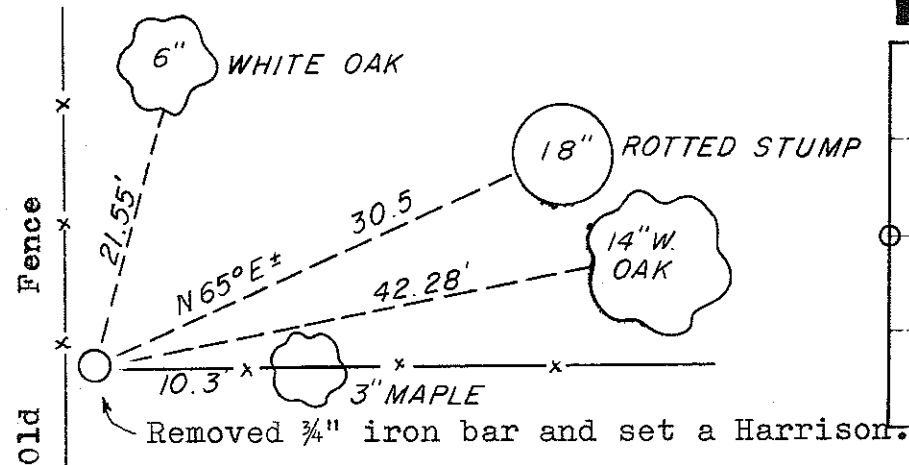
Witnesses to corner location:

William Jung

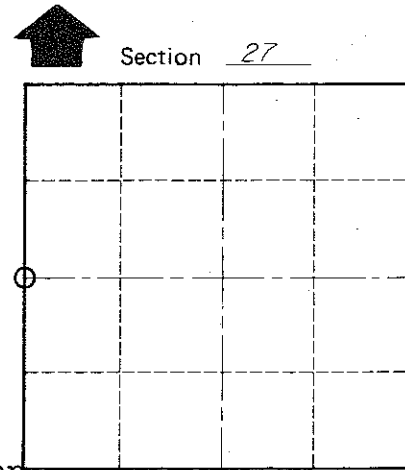
Gary Dechant



WISCONSIN COORDINATE SYSTEM



(ALL TREES ARE DOUBLE BLAZED WITH NAILS AND CAPS SET.)



O = LOCATION CORNER

T 17 N R 2 W

WISCONSIN

SURVEY CONTROL ORDER

Horizontal	_____
Vertical	_____

Corner	East (X)	North (Y)	Elevation (Z)	Zone
Control Sta. Name				

~~City, Village or~~ Town of Adrian
County of Monroe
Wisconsin