

**CERTIFICATE**

I, Nicholas M. Hillmer, do hereby certify that this document and the data contained herein was prepared by me or under my direct supervision and that I am a duly Licensed Land Surveyor under the laws of the State of Wisconsin.

Dated this 23rd day of May, 2013



Nicholas M. Hillmer, P.L.S. 2909  
Anderson Engineering of Minnesota, LLC.

**CERTIFIED LAND CORNER**

History of corner established since Original Government Survey

In 1985 Gary Dechant did not find any evidence. Dechant set a Harrison monument online and halfway between section corners down 15 inches.

Description of evidence found

On February 26th, 2013, Anderson Engineering of Minnesota located the Harrison monument 18 inches below grade in a cultivated field.

No. **21702280020**



Description of corner and witness monuments, references and accessories used to perpetuate the original or re-established location of this corner:

Witnesses to corner location:

Nick Hillmer  
Josh Oslund  
Dan Greenwald

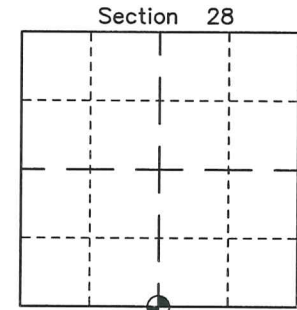
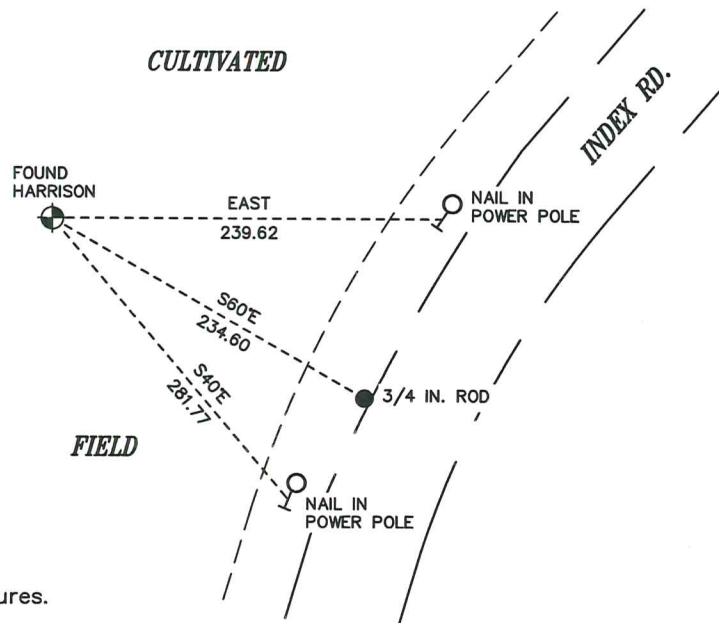


MONROE COUNTY  
COORDINATE SYSTEM  
NAD 1983 (2007)

HARRISON MONUMENT  
Northing (Y) 368481.23  
Easting (X) 676316.49

Base Station - 22 182W  
Northing (Y) 408053.25  
Easting (X) 679287.00

All distances are shown in U.S. Survey Feet.  
Bearings are for tie reference purposes only.  
Coordinates were derived from RTK GNSS procedures.



● = LOCATION CORNER  
Corner I.D. S 1/4 28  
T 17 N R 2 W  
Town of Adrian  
Monroe County, WI.

**21702280020**

I, Gary L. Dechant, do hereby certify that on the 7th day of August 1985, I found ~~(evidence)~~ (no evidence) of the N<sup>1</sup>/<sub>4</sub> corner of Section 33, T 17 N, R 2 W Fourth Principal Meridian, and I re-established said corner according to the Wisconsin Statutes as shown and described hereon.

History of corner establishment since Original Government Survey

Although Fred Holden shows no mention of being at this corner in his notes of April 1907, it is more than likely he was here in order to set the C<sup>1</sup>/<sub>4</sub> corner.

Description of corner evidence found:

Set corner on line and half way between section corners. Corner falls in a field. Set Harrison down 15".

Dated this 15th day of August 1985.

*Gary L. Dechant*

Registered Land Surveyor, 1744  
Title

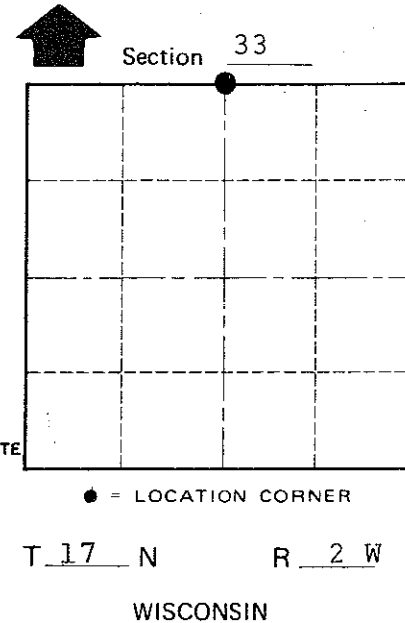
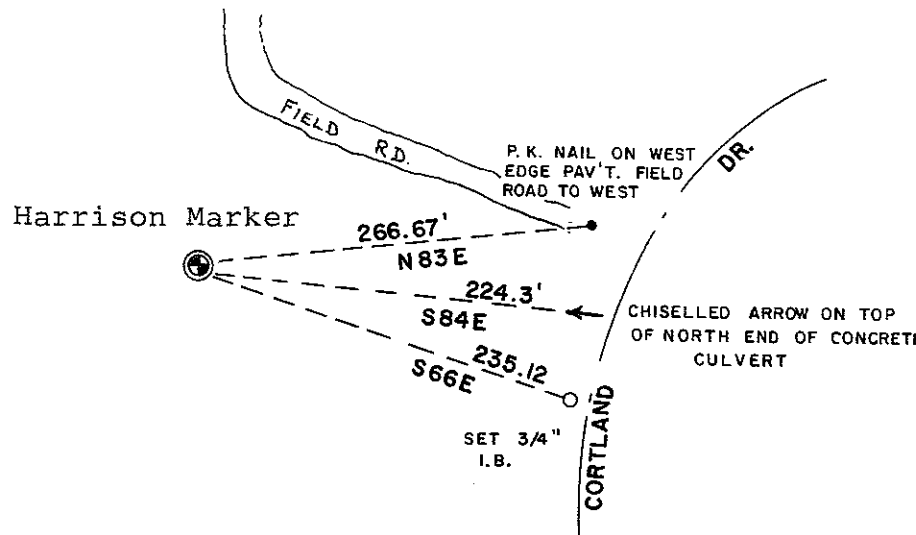
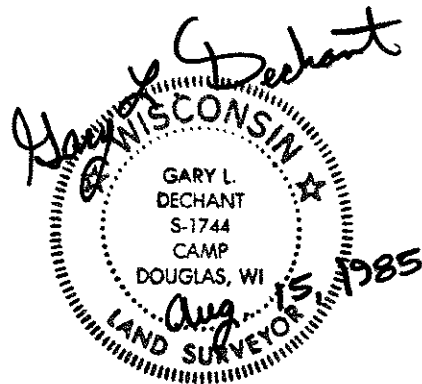
COUNTY SURVEYOR FORM NO. 1

Description of corner and witness monuments, references and accessories used to perpetuate the original or re-established location of this corner:

Weather:  
Hot & Sticky!

Witnesses to corner location:

Dan Rattle  
G. Dechant



SURVEY CONTROL ORDER

Horizontal \_\_\_\_\_  
Vertical \_\_\_\_\_

WISCONSIN COORDINATE SYSTEM

Corner	East (X)	North (Y)	Elevation (Z)	Zone
Control Sta. Name				

City, Village or Town Adrian

County of Monroe