

CERTIFICATE

CERTIFIED LAND CORNER

No. 98B

**21702262020**

I, Harley A. Sime, do hereby certify that on the 14<sup>th</sup> day of April 1976, I found ~~(evidence)~~ (no evidence) of the Center 1/4 corner of Section 26, T 17 N, R 2 W, Fourth Principal Meridian, and I re-established said corner according to the Wisconsin Statutes as shown and described hereon.

Dated this 1 day of April 1977.

History of original corner establishment:

A surveyor was at this corner in November of 1887.

Description of corner evidence found:

Accepted occupied fence corner as the best available evidence after surveying out Section 26.

County Surveyor \_\_\_\_\_  
Title

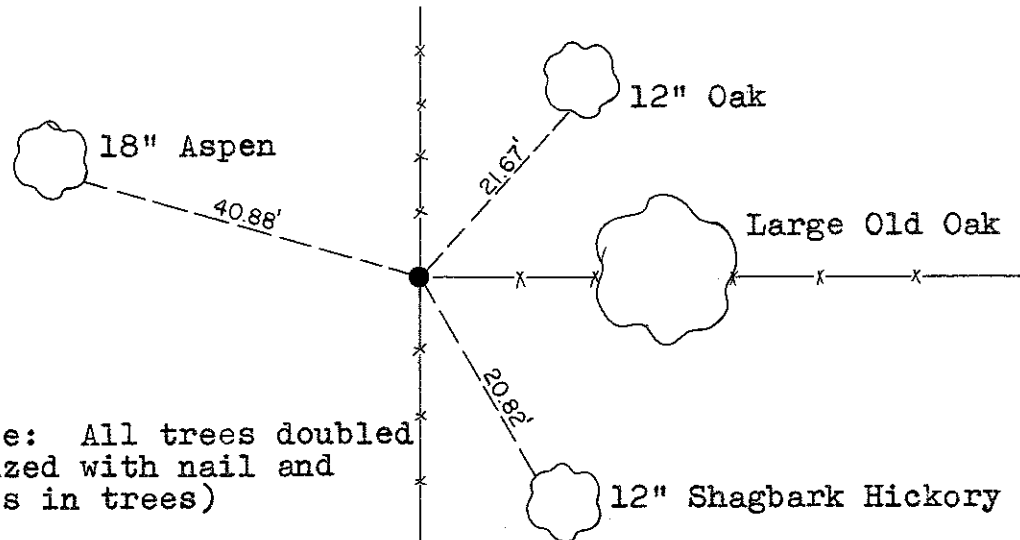
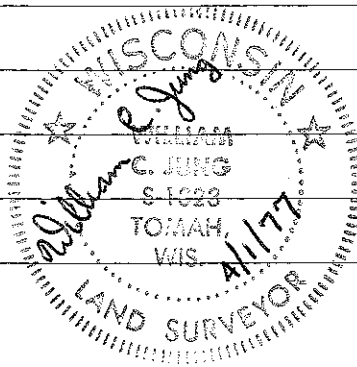
Approved: **HARLEY A. SIME**  
**MONROE CO. SURVEYOR**

Description of corner and witness monuments, references and accessories used to perpetuate the original or re-established location of this corner:

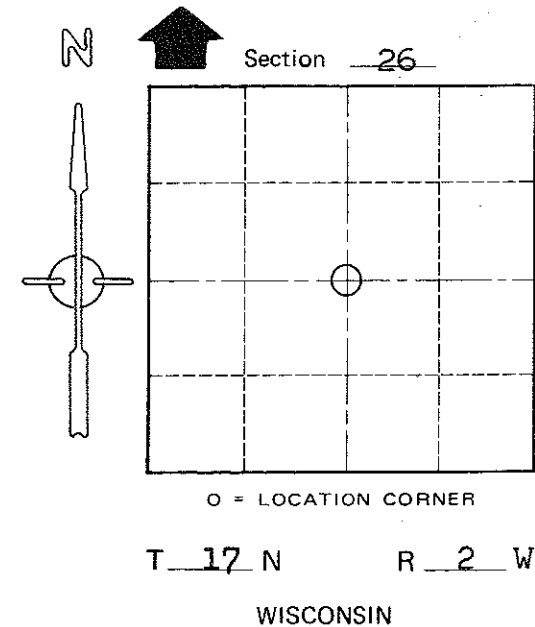
Set 3/4" iron bar at fence corner and piled rocks on it.

Witnesses to corner location:

Jung  
Malliet  
Lueck



(Note: All trees doubled blazed with nail and caps in trees)



COUNTY SURVEYOR FORM NO. 1

SURVEY CONTROL ORDER

Horizontal \_\_\_\_\_  
Vertical \_\_\_\_\_

WISCONSIN COORDINATE SYSTEM

Corner	East (X)	North (Y)	Elevation (Z)	Zone
Control Sta. Name				

City, Village or Town Adrian

County of Monroe County