

103

**U.S. PUBLIC LAND CORNER
MAINTENANCE**

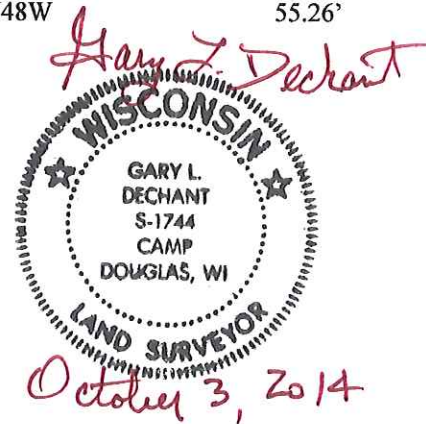
**Corner ID : SE Sec.26, T17N-R2W
21702260000**

<u>DATE</u>	<u>CREW</u>	<u>MONUMENT TYPE -----</u>
October 3, 2014	Zachariah P.Dechant Gary L. Dechant	Corner destroyed from road construction. Reset from previous surveys. Set 3/4"x24" square iron bar in road down 20". Set Railroad spike over iron bar. Falls 12' west of Hemlock Road, 4' south of Indigo Ave., & 20' west of driveway fire no. 21011.

References:

	<u>Bearing</u>	<u>Distance</u>
1) Set 3/4"x24" square iron bar, down 6", in lawn	N27E	97.31'
2) Set 3/4"x24" square iron bar, down 6", in lawn east of driveway	S48E	53.76'
3) Set 3/4"x24" square iron bar, down 14" in field	S27W	43.48
4) Set 3/4"x24" square iron bar, down 14" in field	N48W	55.26'

Reference markers and SE corner Sec. 26 set on straight lines.



I, Harley A. Sime, do hereby certify that on the 16 day of April 19 76, I found (evidence) ~~(no evidence)~~ of the Southeast corner of Section 26, T 17 N, R 2 W, Fourth Principal Meridian, and I re-established said corner according to the Wisconsin Statutes as shown and described hereon.

Dated this 29th day of March 19 77.

History of original corner establishment:

**See Reverse Side
For Maintenance**

Description of corner evidence found:

Set by best available field evidence after surveying out Section 26 and tying into surveys from bordering sections. Set on line with the line fence to the south and in the center of the road.

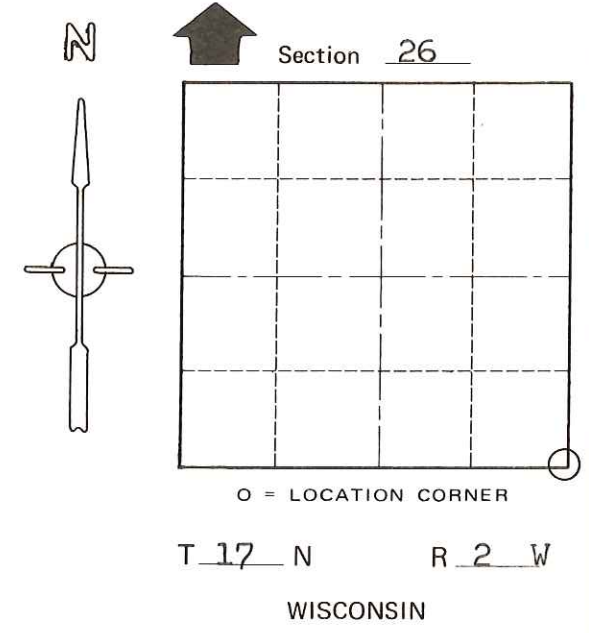
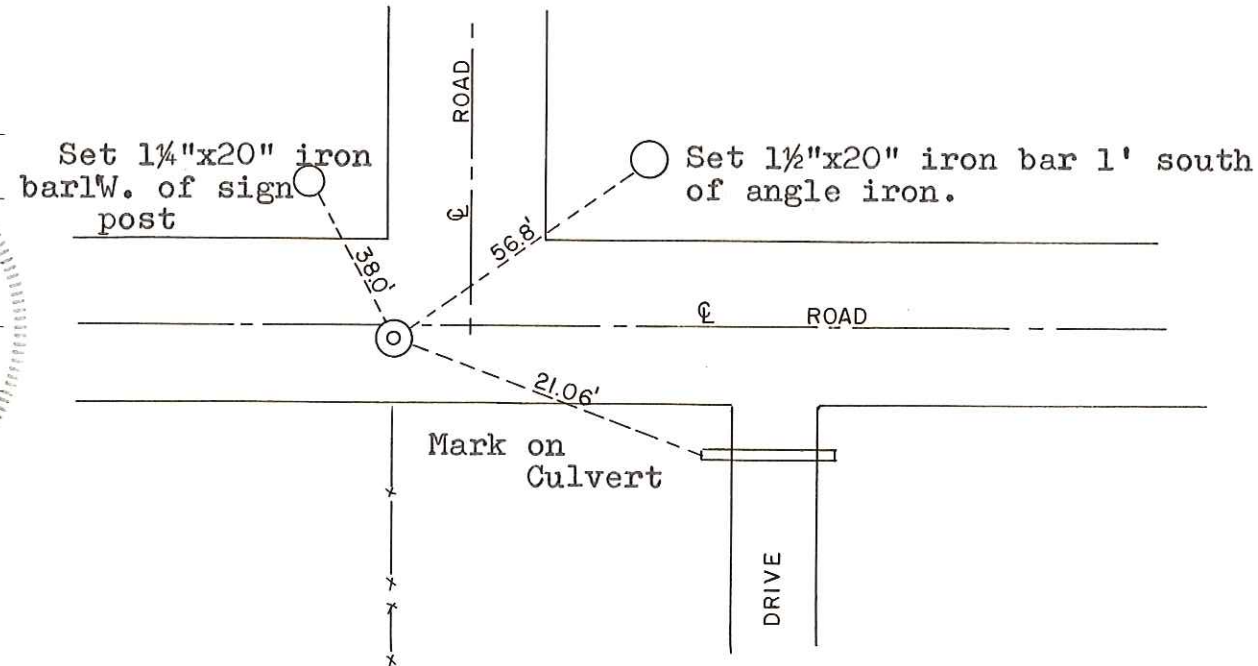
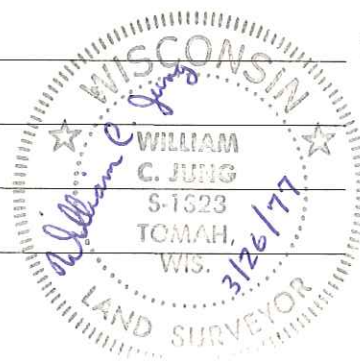
County Surveyor Approved: HARLEY A. SIME
Title MONROE CO. SURVEYOR

Description of corner and witness monuments, references and accessories used to perpetuate the original or re-established location of this corner:

Set Harrison, down 3" in the road.

Witnesses to corner location:

Jung
Malliet



SURVEY CONTROL ORDER

Horizontal	_____
Vertical	_____

WISCONSIN COORDINATE SYSTEM

Corner	East (X)	North (Y)	Elevation (Z)	Zone
Control Sta. Name				

City, Village or Town Adrian

County of Monroe

COUNTY SURVEYOR FORM NO. 1