

102

**U.S. PUBLIC LAND CORNER
MAINTENANCE**

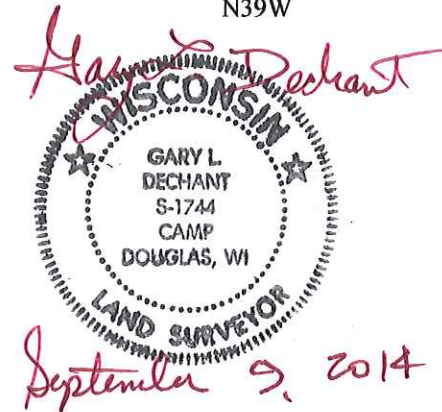
Corner ID : S1/4 Sec.25, T17N-R2W

21702250020

<u>DATE</u>	<u>CREW</u>	<u>MONUMENT TYPE -----</u>
September 9, 2014	Zachariah P.Dechant Gary L. Dechant	Found Harrison in centerline of Indigo Avenue, 33' east of driveway fire no. 21495.

References:

	<u>Bearing</u>	<u>Distance</u>
1) Set 3/4"x24" square iron bar, down 12" in field	N17E	41.68'
2) Set 3/4"x24" square iron bar, down 12" in field	S10E	41.93'
3) Set 3/4"x24" square iron bar, down 6" east of shrub in lawn	S55W	74.40'
4) Set 3/4"x24" square iron bar, down 10", under power line	N39W	43.20'



I, Harley A. Sime, do hereby certify that on the 16 day of April 1976, I found (evidence) ~~(no evidence)~~ of the South 1/4 corner of Section 25, T17 N, R 2 W, Fourth Principal Meridian, and I re-established said corner according to the Wisconsin Statutes as shown and described hereon.

Dated this 29th day of March 1977.

History of original corner establishment:

A surveyor was at this corner in June of 1894.

See Reverse Side For Maintenance

Description of corner evidence found:

Found a railroad spike and accepted it after seeing how said spike fit section 25. Removed the spike and replaced it with a Harrison marker.

County Surveyor Approved: HARLEY A. SIME
MONROE CO. SURVEYOR

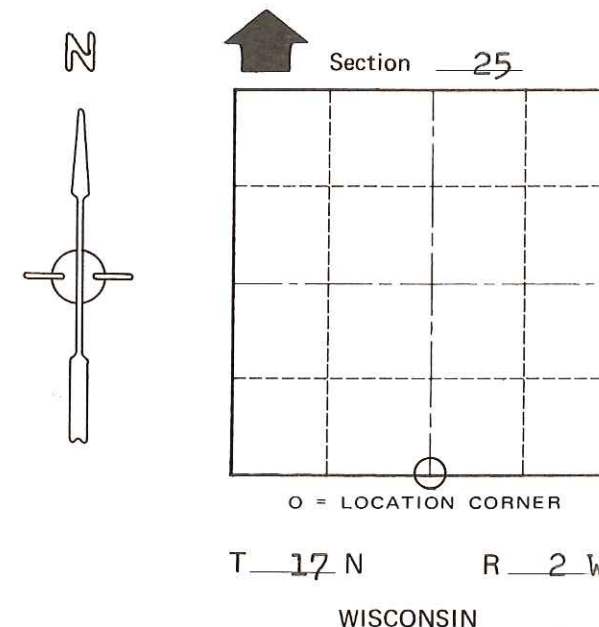
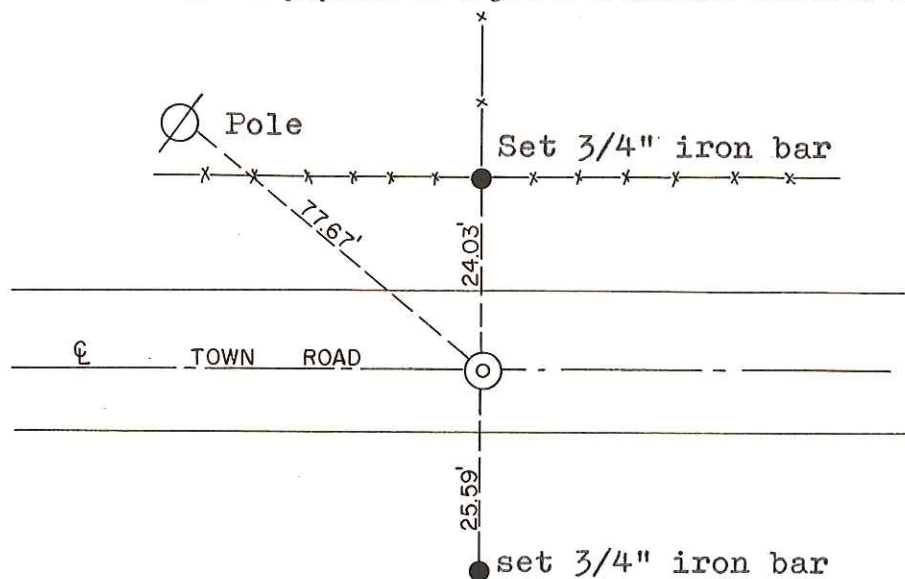
Description of corner and witness monuments, references and accessories used to perpetuate the original or re-established location of this corner:

Set Harrison, down 2".

Witnesses to corner location:

Jung

Malliet



SURVEY CONTROL ORDER

Horizontal	_____
Vertical	_____

WISCONSIN COORDINATE SYSTEM

Corner	East (X)	North (Y)	Elevation (Z)	Zone
Control Sta. Name				

City, Village or Town Adrian

County of Monroe

COUNTY SURVEYOR FORM NO. 1